

## Earthquake Prone Building Priority Thoroughfares and Routes

Under section 133AF of the Building Act 2004 the Whanganui District Council has identified the following parts of a public road, footpath or other thoroughfare for the purposes of s133AF(2)(a) as identified in figure 1 (Resolution 2019/8):

- Victoria Avenue - 1 Victoria Avenue to 200/200B Victoria Avenue, inclusive
- Guyton Street - 61 Guyton Street to 100 Guyton Street, inclusive
- Maria Place - 1 Maria Place to 30 Maria Place, inclusive
- Ridgway Street - 34 Ridgway Street to 70 Ridgway Street, inclusive
- Taupo Quay - 32 Taupo Quay to 68 Taupo Quay, inclusive

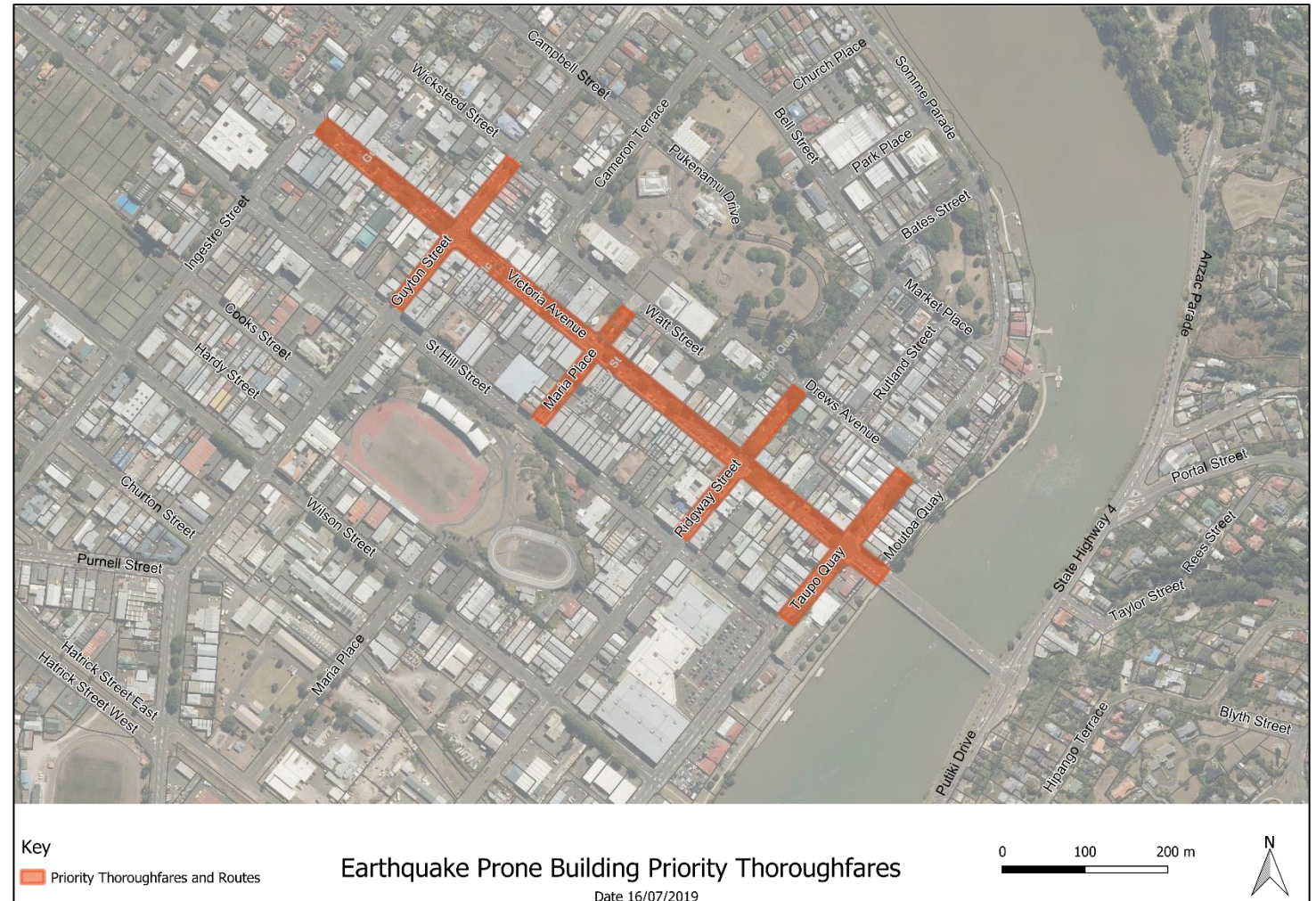


Figure 1: Earthquake Prone Building Priority Areas