

# Welcome to WHANGANUI 2024

**NZME.**  
NEW ZEALAND  
MEDIA AND  
ENTERTAINMENT

**Whanganui Chronicle**  
[whanganuichronicle.co.nz](http://whanganuichronicle.co.nz)



**WHANGANUI  
DISTRICT COUNCIL**  
Te Kaunihera a Rohe o Whanganui



# Essential information

## Whanganui District Council

101 Guyton Street, Whanganui 4541

Monday to Friday, 8.30am-5.00pm

☎ 06 349 0001 (all-hours number)

✉ [yourcouncil@whanganui.govt.nz](mailto:yourcouncil@whanganui.govt.nz)

🌐 [whanganui.govt.nz](http://whanganui.govt.nz)

📘 [facebook.com/whanganuidistrictcouncil](https://www.facebook.com/whanganuidistrictcouncil)

📷 @whanganuidc

## Whanganui isite Visitor Information Centre

31 Taupo Quay, Whanganui 4500

Monday to Friday, 9.00am-5.00pm

Saturday and Sunday, 9.00am-4.00pm

Public holidays, 9.00am-3.00pm

(closed on Christmas Day)

☎ 06 349 0508 / 0800 926 426

🌐 [discoverwhanganui.nz](http://discoverwhanganui.nz)

📘 [facebook.com/isitewhanganui](https://www.facebook.com/isitewhanganui)

## Citizens Advice Bureau Whanganui

120 Guyton Street, Whanganui 4500

☎ 06 345 0844

✉ [whanganui@cab.org.nz](mailto:whanganui@cab.org.nz)

The Citizens Advice Bureau (CAB) offers free and confidential advice to all. If you would like to speak with someone in your own language, CAB has access to Connect Now interpreting services and multilingual volunteers. For more help:

- come into the CAB Whanganui office for advice
- call this FREE number: **0800 367 222**
- visit: [www.cab.org.nz/find-a-cab/contact-us](http://www.cab.org.nz/find-a-cab/contact-us)

## Selected radio stations

Brian FM Whanganui – 91.2FM

More FM Whanganui – 92.8FM

Awa FM – 100FM

The Hits – 89.6FM

Magic Whanganui – 90.4FM

These radio stations also broadcast up-to-date information during an emergency



IN AN EMERGENCY

**CALL  
111**

**FIRE / AMBULANCE / POLICE**

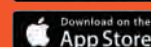
Call **105** for Police non-emergencies – for more information go to: [105.police.govt.nz](http://105.police.govt.nz)



# Stay in the know with Antenno!

Whanganui District Council has a smartphone app available to help keep you informed and involved. Antenno allows you to receive alerts and notifications on incidents like water shut-offs and sportsground closures, or important information during a natural disaster or emergency. The app can also be used to report issues like rubbish dumping and potholes. Install Antenno now – it's free to download.

[www.whanganui.govt.nz/antenno](http://www.whanganui.govt.nz/antenno)





# Contents

|  |    |
|--|----|
| Welcome from the Mayor                     | 4  |
| Engaging with your Mayor and councillors   | 5  |
| Our district                               | 6  |
| Te Awa Tupua – Whanganui River             | 7  |
| Welcome to our newcomers                   | 8  |
| Shopping and city services                 | 9  |
| Parking                                    | 10 |
| <b>Attractions</b>                         |    |
| Arts, culture and heritage                 | 12 |
| Arts, culture and heritage events          | 14 |
| Parks, reserves and gardens                | 15 |
| Adventure and outdoors                     | 17 |
| Whanganui isite Visitor Information Centre | 18 |
| Beaches and swimming pools                 | 20 |
| Libraries and community hubs               | 24 |
| <b>Education</b>                           |    |
| Education and youth                        | 26 |
| <b>Community information</b>               |    |
| Health and wellbeing                       | 28 |
| Business and economy                       | 30 |
| Marae map                                  | 33 |
| City centre map                            | 34 |
| Whanganui Venues & Events                  | 38 |
| Civil Defence                              | 39 |
| Recycling and rubbish collection           | 41 |
| Shared pathways and transport              | 44 |
| Animal management                          | 48 |
| Rates                                      | 52 |
| Housing for older people                   | 53 |
| Useful guidelines                          | 53 |
| <b>Community groups and organisations</b>  |    |
| Community                                  | 54 |
| Health and wellbeing                       | 62 |
| Sport and recreation                       | 64 |



**Above image:** Canoeing on the Whanganui River

**Cover image:** A bird's eye view looking over Whanganui with the War Memorial Tower to the left





# Welcome from Mayor Andrew

**H**aere mai ki Whanganui. Whanganui's future is looking bright and we're delighted that you're joining us. Our corner of the world is known for its dramatic natural beauty, with heritage architecture and the sacred Whanganui River connecting mountains to the sea as it winds its way through the district.

Tucked away on the South Taranaki Bight, our climate is mild and pleasant. Just three hours' drive from Wellington and an hour's plane ride from Auckland, we are a relatively inexpensive place to live with plenty of options for primary and secondary schooling and a number of courses at Te Pūkenga UCOL as well.

A recent survey shows the standout feature for people here is the warmth of the community. Whanganui has a small-town feel with the advantages of big-city living. Many are drawn here for the thriving creative scene and in 2021 we became a UNESCO City of Design. We have a diverse business community as well and the data shows we're in good shape economically, particularly in domestic tourism.

For a city of this size, we have a wealth of amenities. The redeveloped Sarjeant Gallery te Whare o Rehua, a landmark on the New Zealand arts scene, is on course to open in mid-2024. Whanganui Regional Museum is replete with interesting artefacts and famed for its taonga Māori collection so it's always an interesting place to visit. If you can, catch a show at our

123-year-old Royal Whanganui Opera House, the only historic wooden theatre in the country. Or pop in to New Zealand Glassworks Te Whare Tūhua o te Ao to experience the spectacle of glass art being created live. Many people enjoy our libraries, which provide social connection as well as written, audio and visual material.

Whanganui is fortunate to have numerous parks, reserves and open spaces, including nationally significant parks such as Rotokawau Virginia Lake, Kowhai Park, Cooks Gardens and Bason Botanic Gardens. Our native bird sanctuary Bushy Park Tarapurui is also well worth a visit with 3.4km of walking tracks and species you won't see outside of a sanctuary. During summer our local Surf Lifeguard club is on duty at Castlecliff and Kai Iwi beaches from 12pm-6pm seven days a week so you can swim safely between the flags.

We have a strong rural sector, with a varied geography and a mixture of property types, including sheep and beef farms, forestry, lifestyle blocks and traditional marae communities such as those on the Whanganui River Road. Our rural areas have beautiful bush walks and lakes, and the Mountains to Sea Cycle Trail that traverses the new Upokongaro pedestrian and cycle bridge.

Over the year, keep an eye out for our great range of community events including Whanganui Vintage



Weekend, Downer New Zealand Masters Games, Whanganui Heritage celebrations, Diwali, the Chinese Lantern Festival and the Fest of Cultural Unity.

I'm pleased to say Whanganui is becoming increasingly multicultural, with one in eight of us born overseas. Everyone who comes here has a different story with a unique set of experiences, skills, knowledge and viewpoints, and I really value the diversity this brings.

Feel free to have a chat to me when I'm out and about – I'm always keen to talk.

Ngā mihi nui.

**Andrew Tripe**  
Whanganui District Mayor





## Engaging with your Mayor and councillors

There are a number of ways you can be heard by your elected members. You can simply email or make a phone call but other alternatives are available. You may like to present at a full council meeting or committee meeting, give us feedback on public consultations or register for our online community panel.

You may also like to present a petition (a minimum of 20 signatures is required), which is a more formal mechanism to make a request to the council.

For more information on all these options, visit: [whanganui.govt.nz/engaging-with-your-council](http://whanganui.govt.nz/engaging-with-your-council)

| Mayor                 | Phone        | Email  |
|-----------------------|--------------|--|
| Andrew Tripe          | 027 305 4166 | <a href="mailto:andrew.tripe@whanganui.govt.nz">andrew.tripe@whanganui.govt.nz</a>                   |
| <b>Deputy Mayor</b>   |              |  |
| Helen Craig           | 021 103 0737 | <a href="mailto:helen.craig@whanganui.govt.nz">helen.craig@whanganui.govt.nz</a>                     |
| <b>Councillors</b>    |              |  |
| Charlie Anderson      | 027 672 1400 | <a href="mailto:charlie.anderson@whanganui.govt.nz">charlie.anderson@whanganui.govt.nz</a>           |
| Philippa Baker-Hogan  | 027 272 7953 | <a href="mailto:philippa.baker-hogan@whanganui.govt.nz">philippa.baker-hogan@whanganui.govt.nz</a>   |
| Glenda Brown          | 027 278 0038 | <a href="mailto:glenda.brown@whanganui.govt.nz">glenda.brown@whanganui.govt.nz</a>                   |
| Josh Chandulal-Mackay | 027 548 4999 | <a href="mailto:josh.chandulal-mackay@whanganui.govt.nz">josh.chandulal-mackay@whanganui.govt.nz</a> |
| Jenny Duncan          | 021 669 847  | <a href="mailto:jenny.duncan@whanganui.govt.nz">jenny.duncan@whanganui.govt.nz</a>                   |
| Ross Fallen           | 027 255 1459 | <a href="mailto:ross.fallen@whanganui.govt.nz">ross.fallen@whanganui.govt.nz</a>                     |
| Kate Joblin           | 027 683 6471 | <a href="mailto:kate.joblin@whanganui.govt.nz">kate.joblin@whanganui.govt.nz</a>                     |
| Michael Law           | 027 329 1033 | <a href="mailto:michael.law@whanganui.govt.nz">michael.law@whanganui.govt.nz</a>                     |
| Charlotte Melser      | 027 289 1064 | <a href="mailto:charlotte.melser@whanganui.govt.nz">charlotte.melser@whanganui.govt.nz</a>           |
| Peter Oskam           | 027 215 1785 | <a href="mailto:peter.oskam@whanganui.govt.nz">peter.oskam@whanganui.govt.nz</a>                     |
| Rob Vinsen            | 021 766 781  | <a href="mailto:rob.vinsen@whanganui.govt.nz">rob.vinsen@whanganui.govt.nz</a>                       |

### Whanganui Rural Community Board

| Chair                | Phone        | Email  |
|----------------------|--------------|--|
| David Wells          | 027 289 5112 | <a href="mailto:david.wells@whanganui.govt.nz">david.wells@whanganui.govt.nz</a>       |
| <b>Deputy Chair</b>  |              |  |
| Grant Skilton        | 027 245 8067 | <a href="mailto:grant.skilton@whanganui.govt.nz">grant.skilton@whanganui.govt.nz</a>   |
| <b>Board Members</b> |              |  |
| Bill Ashworth        | 06 342 7704  | <a href="mailto:bill.ashworth@whanganui.govt.nz">bill.ashworth@whanganui.govt.nz</a>   |
| Judd Bailey          | 027 405 8141 | <a href="mailto:julian.bailey@whanganui.govt.nz">julian.bailey@whanganui.govt.nz</a>   |
| Michael Dick         | 06 342 9922  | <a href="mailto:michael.dick@whanganui.govt.nz">michael.dick@whanganui.govt.nz</a>     |
| Brian Doughty        | 027 485 7903 | <a href="mailto:brian.doughty@whanganui.govt.nz">brian.doughty@whanganui.govt.nz</a>   |
| Jenny Tamakehu       | -            | <a href="mailto:jenny.tamakehu@whanganui.govt.nz">jenny.tamakehu@whanganui.govt.nz</a> |





## Our district

From the heart of the North Island to its breathtaking west coast, Whanganui is rich in history, culture and has a diverse natural environment.

Our city is a unique blend of heritage architecture and cutting-edge creativity and our beauty, legends and the Whanganui River have inspired generations of visitors and inhabitants.

The awa is New Zealand's longest navigable river, stretching for 290km from the slopes of Mount Tongariro to the Tasman Sea.

Whanganui River Road runs through the Whanganui district, which includes the small river settlements of Matahiwi, Ranana, Jerusalem and Pipiriki.

Most of Whanganui district's population (nearing 50,000) lives in the central urban area at the river mouth with many rural communities spread around our district.

Diversity is an important part of Whanganui's character and newcomers from around the world find a warm welcome here.

Helping newcomers to feel they belong in Whanganui means they can more readily participate in and contribute to our community. For more information and helpful links for newcomers, visit: [whanganui.govt.nz/welcome](http://whanganui.govt.nz/welcome)

### UNESCO City of Design

Creativity, innovative spirit, cultural integrity and strength of artistic tradition won Whanganui recognition as an internationally significant UNESCO City of Design.

The designation earns Whanganui a place in the UNESCO Creative Cities Network and recognises the city's historic and contemporary contributions to design in innumerable and varied forms.

Worldwide, 49 new cities have joined the UNESCO Creative Cities Network (UCCN) following their designation by UNESCO Director-General Audrey Azoulay, in recognition of their commitment to placing culture and creativity at the heart of their development and to sharing knowledge and good practices.

### A safe community

Safer Whanganui is a community-led collaboration that provides leadership and direction, with everyone working in partnership to create a safer community for all.

The Safer Whanganui Strategy covers all people, all ages and all ethnicities living, visiting or passing through our district. We want a community that is an attractive place to live in, work and visit.

### Positive ageing

Whanganui District Council is committed to promoting positive attitudes to ageing in Whanganui so that older adults are at the heart of our community and are able to be as informed, active, healthy and independent as possible.

An Age-Friendly Plan has been developed for Whanganui that includes actions based on the eight essential criteria of an age-friendly community.

### Sister cities

Our Sister Cities programme provides us with a platform to develop international friendships, leading to a mutually beneficial exchange of ideas and the development of social, cultural, economic and educational opportunities.

Whanganui and Nagaizumi-cho in Japan became sister cities in 1988. There are now strong social, cultural, sporting and educational links between the two cities. The sister-city relationship with Toowoomba in Australia was forged 40 years ago. Whanganui has also entered into a strategic relationship with Lijiang, China.

### Having your say in our community

Give us your thoughts on council proposals and help us make fair and informed decisions.

We want to hear from residents, businesses, workers, students, volunteers and more – anyone who is interested in our community.

The Our District, Your Say panel provides an informal way for you to give us your feedback and ideas. You can sign up at: [whanganui.govt.nz/online-community-panel](http://whanganui.govt.nz/online-community-panel)

You can also submit your views at: [whanganui.govt.nz/have-your-say](http://whanganui.govt.nz/have-your-say) or follow us on Facebook @whanganuidistrictcouncil







# Te Awa Tupua – the Whanganui River

*E rere kau mai te Awa nui mai i te Kāhui Maunga ki Tangaroa  
Ko au te Awa, Ko te Awa ko au*

This whakatauāki represents the inalienable relationship of the hapū and iwi of this region with the Whanganui River.

In March 2017 legislation was passed in Parliament establishing a unique legal status for the Whanganui River, that of Te Awa Tupua. Under this new status, the river is recognised as an indivisible and living whole. Comprising all of the small streams and large streams that come together to form the Whanganui River from the mountains to the sea, incorporating all its physical and metaphysical elements.

In doing so, the Te Awa Tupua (Whanganui River Claims Settlement) Act 2017 establishes a framework at law to support the innate values of the Whanganui River practised by Whanganui hapū and iwi for centuries. These four values, called Tupua Te Kawa, now guide all actions and decision-making to provide for the health and wellbeing of both the river and its peoples.

“Kaua e kōrero mo te Awa, me kōrero ki te Awa” – “Do not merely speak of the river, speak instead to the river.” That is, relate to the river and seek its guidance in all things.

The paradigm shifts from merely speaking about the river to actively speaking to the river as a community empowered by this new status and the time-honoured values of Tupua te Kawa.

## Tupua te Kawa

The first of the four values is “Ko te awa te mātapuna o te ora” – “The river is the source of spiritual and physical sustenance”. Te Awa Tupua is a spiritual and physical entity that supports and sustains both the life and natural resources within the Whanganui River and the health and wellbeing of the iwi, hapū and other communities of the river.

The second core value is indivisibility: “E rere kau mai te awa nui mai te kāhui maunga ki Tangaroa” – “The great river flows from the mountains to the sea”. If we are to address the river’s needs, we must address the river as a whole.

The third value relates to the longstanding relationship that Whanganui hapū and iwi have with the river. Hapū and iwi are inextricably intertwined with the river.

The tribal maxim “Ko au te Awa, ko te Awa ko au” – “I am the river and the

river is me” speaks of a responsibility to care for the river out of whakapapa (kinship) with the river itself, a responsibility that can neither be conferred nor removed.

The fourth value speaks of the small and large streams that flow into one another and form one river: “Ngā manga iti, ngā manga nui e honohono kau ana hei Awa Tupua”.

This value recognises that all communities have an interest in ensuring the health and wellbeing of the river.

It is an affirmation that each of the streams (communities) of the river remain steadfast in our collaboration to that end.

Thus, a duty of responsibility and care is created across communities of the river – to actively collaborate over the health and wellbeing of the Whanganui River, Te Awa Tupua.

Most importantly the collective responsibility inherent in Tupua te Kawa will bind, educate and guide successive generations to a greater and more inclusive discourse over sustainability of natural resources locally, nationally and globally.



# Welcome to our newcomers

*Kia ora, bula, bienvenido, namaste, ni hao, kamusta, welkom, welcome.*

We're so glad you're here! Our vision is that all newcomers to Whanganui feel welcome and have a sense of belonging here, enabling newcomers to thrive in and contribute to the Whanganui community.

We are proud to be an accredited Welcoming Community with Immigration New Zealand, recognising that communities are healthier, happier and more productive when newcomers are welcomed and participate fully in society and in the local economy.

For more information to help you settle in and learn about community services, you can either email [communitywellbeing@whanganui.govt.nz](mailto:communitywellbeing@whanganui.govt.nz) or visit:

**[whanganui.govt.nz/welcome](http://whanganui.govt.nz/welcome)**

## Citizens Advice Bureau

A one-stop shop if you require advice or support. This service is available to all members of the community and is

free and confidential. Translation help is available.

Call: 06 345 0844

Address: 120 Guyton Street,  
Whanganui

Email: [whanganui@cab.org.nz](mailto:whanganui@cab.org.nz)

## Multicultural Council of Rangitikei/Whanganui

Over the past 20 years, the Multicultural Council of Rangitikei / Whanganui has welcomed many newcomers to our vibrant, ethnically diverse community, offering practical help and providing events and activities to share culture and traditions. Email [info@wanganuimulticultural.co.nz](mailto:info@wanganuimulticultural.co.nz), follow on Facebook and Instagram or visit: **[whanganuimulticultural.co.nz](http://whanganuimulticultural.co.nz)**

## Living in New Zealand

This New Zealand Government website is packed with useful, reliable

information to help you get settled:

**[newzealandnow.govt.nz](http://newzealandnow.govt.nz)**

## Immigration

For information about visas, employing migrants and immigration support for migrants and students, visit:

**[immigration.govt.nz](http://immigration.govt.nz)**

## Human rights

It is against the law in New Zealand to be discriminated against because of your ethnic background, sexual orientation, sex, age, disability, religion or family status among other things.

If you think you have been discriminated against or want to enquire about our process, contact the Human Rights Commission, Te Kāhui Tika Tangata (translation help is available).

Call 0800 496 877, email [infoline@hrc.co.nz](mailto:infoline@hrc.co.nz), text 021 0236 4253 or visit:

**[hrc.co.nz](http://hrc.co.nz)**







The Whanganui River Markets

# Shopping and city services

## Town Centre (Victoria Avenue and side streets)

This is the main shopping area in Whanganui, with a wide variety of independent retailers, grocers and galleries alongside national retail brands such as Whitcoulls, Bed Bath & Beyond, Kathmandu, Cotton On and Chemist Warehouse.

Many businesses in this area are located in beautiful heritage buildings. It is also home to buskers, eateries, bars, festivals and entertainment venues. Large supermarkets Pak'nSave, New World and Woolworths are located at the top of Victoria Avenue

## Whanganui River Markets

Our weekly Saturday markets are located on the historic site of early Māori trading. The Whanganui River is the backdrop to more than 100 stalls including an array of local food producers in the farmers' market section.

There's also an eclectic mix of collectors of vintage and retro, makers of art and traditional crafts, plants

and delicious street food in the River Traders area. Open every Saturday 8.30am-1.00pm, Taupo Quay.

## Galleries and artist venues

Whanganui is known as a haven for the arts and boasts an abundance of galleries and community art spaces.

New Zealand Glassworks – Te Whare Tūhua O Te Ao on Rutland Street is the national centre for art glass where you can watch artists work in the open studio area and purchase limited-edition pieces from the retail store.

The renowned Sarjeant Gallery Te Whare o Rehua Whanganui is expected to reopen later this year following a substantial redevelopment, including an extension to increase exhibition and storage space.

The gallery holds a permanent collection of more than 8300 art works of national and international significance, covering four centuries of European art history and all of New Zealand's art history. Whanganui Arts at The Centre on Taupo Quay features up-and-coming artist exhibitions and art for sale.

## Boutique shopping

Whanganui is packed with heritage charm and quirky shops, with many hidden gems to be found. Creativity abounds amid antique emporiums, delicatessens, high-end fashion and homewares and other speciality stores. Fuel your shopping with our café culture, representative of our obsession with good food and great coffee.

## Trafalgar Square

This shopping complex offers about 20 retailers including The Warehouse, Woolworths, Paper Plus, Number One Shoes and a food court in an undercover retail complex with more than 400 free carparks.

## Second-hand and opportunity shops

Whanganui's vintage and thrift stores offer a bounty of unique and collectable second-hand treasures and are a drawcard for out-of-town visitors. Many are located along Victoria Avenue – those in Gonville, Whanganui East and Aramoho are also well worth a visit.



# Parking

Whanganui District Council maintains off-street car parks and a network of on-street meters and time-restricted areas that are monitored by parking officers. Paid parking is between 8.00am and 5.30pm weekdays and Saturdays (public holidays are free).

There are 629 kerbside metered parking spaces and 1118 time-restricted areas around the central city area. A vehicle found overstaying in a parking space may incur an infringement. The parking services team patrols on a regular basis, including on Saturdays.

The council has introduced MetroLite Touch parking meters that operate on a pay-by-plate parking system.

The meters feature three payment methods – coins, tap-and-go (credit / debit card) and a QR code for smartphone use that connects to the ParkEasy payment portal. The ParkMate smartphone app can also be used on these meters.

## Mobility card users

Mobility parking permit holders can use mobility parking spaces that are wider than standard parks and closer to venues. These spaces are marked with the disability symbol and painted yellow.

Mobility card holders can park in marked mobility spaces, or in time-restricted or paid metered parking spaces. Please clearly display your mobility card on the dashboard of your

vehicle at all times, and as close to the windscreen as possible.

Please note that payment is required on all metered spaces – a 30-minute free parking period will apply after the payment has been made (ie: pay for 30 minutes and you'll receive one hour of parking).

For more details, visit:

**[whanganui.govt.nz/mobility-parking](http://whanganui.govt.nz/mobility-parking)**

## SuperGold card senior parking scheme

This scheme gives SuperGold card holders who have applied to the council for a permit to display in their vehicle free parking in the CBD between 8.00am and 11.00am, Monday to Friday. The permits are free and last for five years from the date of issue.

The concession scheme applies to the area contained within St Hill Street,

Taupo Quay, Drews Avenue, Watt Street, Wicksteed Street and Ingestre Street and includes all metered parking spaces.

## Whanganui Airport

Whanganui Airport's long-term car park is controlled by a parking meter located in the terminal building that accepts coins and credit cards. You'll need to enter your registration plate number to pay.

A transaction fee applies if a credit card is used. The car park is open from before the first morning flight until after the last incoming aircraft, and is secured and monitored at all other times.

For complete council parking information, visit:

**[whanganui.govt.nz/parking](http://whanganui.govt.nz/parking)**






**FULL MECHANICAL REPAIRS • WOF • TYRES • BRAKES • SERVICES**  
 The best of old fashion service & modern know-how




**134 Guyton Street, Wanganui**  
**Ph/Fax (06) 345 0375**  
**Mobile 027 491 5454**



# AMERICA

## Nails




**NAILS • EYEBROW MICROBLADING WAXING & MORE SERVICES • EYELASH EXTENSIONS**  
 • Spa Pedicures • Acrylic Nails • Shellac Gel  
 • Manicures • SNS Dipping

**NEW SNS DIPPING POWDER HEALTHY NATURAL NAILS**  
 136 Victoria Avenue • Mon - Sat 9am - 5.30pm • Sun 10am - 4pm  
**Phone (06) 347 2909**



# TRAFALGAR SQUARE - SHOP INSIDE THE SQUARE



***Individual store hours may vary, if you are visiting a specific store we recommend you call or visit their website or social channels beforehand***

|                                 |   |                          |               |                                      |               |
|---------------------------------|---|--------------------------|---------------|--------------------------------------|---------------|
| Angel Touch Hair & Beauty       | Hair: 021 144 9558<br>Nails: 021 210 3349 | Just Cuts                | (06) 348 0466 | Tank Juice                           | (06) 262 7009 |
| Awa Gifts - Maori Shop          | (06) 348 4994                             | Kiwiana Café             | (06) 345 2590 | Technofix                            | (06) 345 0729 |
| Bargain Chemist                 | Coming Soon                               | Millers                  | (06) 345 3965 | The 123 Mart                         | (06) 345 2122 |
| Bloody Burgers                  | (06) 213 0799                             | Mister Minit             | (06) 345 0484 | The Treat Zone                       | (06) 348 8103 |
| Carpet Court                    | (06) 777 3023                             | Number 1 Shoes / Hannahs | (06) 348 8495 | The Warehouse / Warehouse Stationery | (06) 348 0171 |
| Countdown                       | (06) 349 0199                             | O & Bowl                 | (06) 213 4284 | Trafalgar Lotto                      | (06) 348 8291 |
| EB Games                        | (06) 348 9242                             | Ocggi Sushi              | (06) 213 4284 | World Travellers                     | (06) 348 8190 |
| A Taste of Castle Indian Eatery | (06) 345 0863                             | Paper Plus / NZ Post     | (06) 348 0351 |                                      |               |
|                                 |   | Roasties Carvery         | (06) 345 2590 |                                      |               |

**[www.trafalgarsquare.co.nz](http://www.trafalgarsquare.co.nz)**



**Trafalgar Square Shopping Centre**  
**100 Taupo Quay, Whanganui**  
**[www.trafalgarsquare.co.nz](http://www.trafalgarsquare.co.nz)**  
**Phone (06) 348 0314**





# Arts, culture and heritage

## UNESCO City of Design

Whanganui is proud to be recognised as a City of Design within the UNESCO Creative Cities Network. Having this internationally significant status conferred on it pays tribute to Whanganui's historic and contemporary contributions to design in all its forms and our creativity and innovative spirit.

## Pukenamu Queen's Park

This premier park is the cultural heart of the city, comprising the Alexander Library Te Rerenga Mai o Te Kāuru, Whanganui Regional Museum, the Handspan Peace Sculpture, the Carillon Bells and the Veterans' Steps. It is also home to the iconic Sarjeant Gallery Te Whare o Rehua Whanganui, one of the country's most important heritage buildings, which has been closed for earthquake strengthening and redevelopment work.

## Sarjeant Gallery Te Whare o Rehua Whanganui

The renowned Sarjeant Gallery Te Whare o Rehua Whanganui is expected to reopen later this year following a substantial redevelopment to strengthen and restore the 105-year-old heritage building and extend it with a new wing, Te Pātaka o Sir Te Atawhai Archie John Taiaroa.

The Sarjeant Collection is unrivalled in regional New Zealand and comprises

more than 9000 artworks and archival items spanning four centuries of European and New Zealand art history.

Once redevelopment work is complete, the Sarjeant Gallery will be free to enter and open 7 days. Head to the website for more information: [sarjeant.org.nz](http://sarjeant.org.nz)

## Drews Avenue artistic hub

Drews Avenue is the heart of creativity in Whanganui. Its streetscape design, which includes communal outdoor seating, bike racks, planters and games, was awarded a merit at the New Zealand Recreation Awards 2022. Pick up a coffee (in your reusable cup) and stroll. At last count, there were 13 galleries and museums within a five-minute walk.

## Whanganui Regional Museum

Located in Pukenamu Queen's Park in the cultural heart of Whanganui, Whanganui Regional Museum is famed for its tāonga Māori collection, and the Gottfried Lindauer Gallery.

Open every day of the year except Christmas Day and Good Friday. Admission is free.

## New Zealand Glassworks - Te Whare Tūhua o Te Ao

This exciting and interactive art glass production facility is open to everyone. It offers a studio for glass artists, workshops for all abilities and

promotes the work of leading New Zealand glass artists in the gallery.

## Whanganui War Memorial Centre

One of the finest examples of New Zealand modernist architecture, this building incorporates a curtain-glass wall framed with concrete cube grilles. Its central feature, which remains a focus for Anzac Day commemorations, is the vestibule containing the Book of Remembrance. Also within the foyer is a restored 1892 Krupp gun that found its way to Whanganui following the Boer War.

## Royal Whanganui Opera House

The Opera House is the sole surviving wooden building of its type in the southern hemisphere. This Victorian beauty is still a working theatre, and is internationally recognised for its excellent acoustics.

## Quartz Museum of Studio Ceramics

This museum was established to house the Rick Rudd Collection of studio ceramics and to showcase works borrowed from private collections. Unique to Aotearoa New Zealand, this is the only dedicated museum for studio ceramics and the largest and most diverse public ceramic display in the country.





**WE  
PAY CASH**  
FOR YOUR 2nd HAND GOODS  
MOVING HOUSE? SELLING? RENOVATING?

## FREE QUOTE AND PICK UP WITHIN WANGANUI

- ESTATE LOTS
- BEDS
- DRAWERS
- HOUSEHOLD ITEMS

- WHITE WARE
- HOUSE LOTS
- TABLE AND CHAIRS

**WE ARE ALWAYS BUYING  
AND SELLING**

MARTON PICKUPS AND DELIVERIES AVAILABLE

**GINZA BARGAINS**  
SECONDHAND FURNITURE  
54 MARIA PL EXTN, WANGANUI  
PH 06 345 3154  
OPEN 6 DAYS | [www.ginza.co.nz](http://www.ginza.co.nz)

Mon-Fri 9am - 5pm • Sat 9.30am - 2pm • Email: [ginza2@xtra.co.nz](mailto:ginza2@xtra.co.nz)

**FREE  
QUOTES WITHIN  
WANGANUI**

**COLLECTION  
SERVICE  
AVAILABLE**

**Use your Grey Power discount here**

**Use your Goldcard Here**

\*Cash is paid by cash cheque or direct credit into provided bank account

**Find us on Facebook**

Your Local One Stop Furniture Shop WINZ Quotes, Layby and Trade-Ins Welcome



### Durie Hill Tower and Elevator

The only underground public elevator in the southern hemisphere leads to an historic tower that offers stunning views of the city, the Tasman Sea, Mt Ruapehu and Mt Taranaki.

### Tram Museum and Tram Shed

Step back in time with a trip on Whanganui's fully restored, 112-year-old tram named Mable on Moutoa Quay. Check out the Tramways Museum too.

### Ward Observatory

The observatory houses a 24cm telescope, the largest unmodified refractor telescope still in use in New Zealand. Public viewing is available on Friday evenings or by arrangement with the Whanganui Astronomical Society.

### Whanganui Riverboat Centre

Take a trip aboard New Zealand's last coal-fired paddle steamer, the PS Waimarie (est 1900) or the smaller, restored riverboat MV Wairua. Plus, check out our Riverboat Museum, an intricate display of river-related photography and artefacts from centuries past. Tickets can be booked online.

### St Paul's Memorial Church, Putiki

An historic church with stunning Māori carvings and woven tukutuku panels. Guided tours can be booked through

the Whanganui isite Visitor Information Centre.

### Pākaitore (Moutoa Gardens)

A quiet garden of mature, native and exotic trees. Associated with early trading and home to several memorials, protest action took place on the site in 1995 and it remains a place of prominence.

### Whanganui Musicians Club

Come and enjoy what the Whanganui Musicians Club has to offer, from blues

to rock to reggae. Club night is on the first Friday of every month at the Musicians Club Hall, 65 Drews Avenue.

### Coastal Arts Trail

View the vast array of public artworks, independent galleries and pop-up events in Whanganui via the Coastal Arts Trail, a cross-regional initiative promoting the arts in Taranaki, Whanganui and Manawatū. You can find out more on the Coastal Arts Trail website: [coastalartstrail.nz/regions/whanganui](http://coastalartstrail.nz/regions/whanganui)



Whanganui's fully restored tram, Mable

## The go to team for all electrical services

- New and existing wiring and repairs
- Residential and light commercial work
- Heat pumps and air conditioning
- Home ventilation systems

# Gofox

## ELECTRICAL

Contact **Sotiris** for our professional and friendly services

Call **(022) 414 6369** or visit **[gofox.nz](http://gofox.nz)**



# Arts, culture and heritage events

We celebrate our vibrant arts and cultural life with exciting events throughout the year. Please check the event websites for updated information.

## Whanganui Fest of Cultural Unity & Cultural Celebrations

The Fest of Cultural Unity is a free, inclusive, family-friendly, festival celebrating diversity. This annual festival draws crowds of thousands to Majestic Square and involves cultural performances, food stalls and more.

Throughout the year there are many other cultural celebrations showcasing Whanganui's diverse customary arts and creativity, including Diwali, Chinese Lantern Festival, and Race Unity Week.

These events and more can be viewed on our Whanganui Cultural Calendar that can be viewed at:  
[whanganuimulticultural.co.nz](http://whanganuimulticultural.co.nz)

## Whanganui Vintage Weekend

During Wellington Anniversary weekend, Whanganui puts on its biggest party, with more than 30 vintage-themed events and attractions among Whanganui's historic architecture:  
[whanganuivintageweekend.nz](http://whanganuivintageweekend.nz)

## Heritage events

Whanganui boasts one of New Zealand's highest concentrations of European heritage buildings, along with numerous significant Māori sites such as St Paul's Memorial Church and various marae lining the Whanganui River Road to the settlement of Jerusalem. Several events are held throughout the year to celebrate and explore our heritage, including the Whanganui Regional Heritage Awards and the Whanganui Summer Programme. For more information on heritage events visit:  
[whanganuiheritagetrust.org.nz](http://whanganuiheritagetrust.org.nz)

## Artists Open Studios

In March each year more than 60 artists open their studios to share the result of their hard work and talent. This year's event will be held from 15-24 March 2024: [openstudios.co.nz](http://openstudios.co.nz)

## Whanganui Literary Festival

This vibrant, biennial festival for writers and readers will next be held in 2025. Writers who have previously appeared include Fiona Sussman, CK Stead, Fiona Kidman, Witi Ihimaera, Elizabeth Knox, Bill Manhire, Nicky Hager and Charlotte Grimshaw: [writersfest.co.nz](http://writersfest.co.nz)

## La Fiesta

The Women's Network of Whanganui is proud to bring this event to Whanganui every February / March, with 2024 being the fifteenth year. A celebration of all that's wonderful about women in our community, the festival covers everything from art, music and dance to workshops, educational talks and lectures, meditation, movement, yoga and lots of fun. This year's La Fiesta will run from 10 February until 10 March 2024. A two week Winter Wonderfest is also run in July / August:  
[lafiestanz.com](http://lafiestanz.com)

## Whanganui Opera Week

Each January, Whanganui Opera Week presents the students of the New Zealand Opera School at various public events in the city, culminating in a gala evening at the Royal Whanganui Opera House: [operaschool.org.nz/opera-week-in-whanganui](http://operaschool.org.nz/opera-week-in-whanganui)

## Whanganui Summer Programme

Every January since the mid-1980s the Whanganui Summer Programme has provided a month-long feast of events covering natural history, culture and history plus talks for local people: [whanganuisummerprogram.weebly.com](http://whanganuisummerprogram.weebly.com)

# Arts, culture and heritage funding

## Creative Communities Scheme

This fund supports community groups and individuals to provide opportunities for local community arts initiatives that focus on access and participation, diverse cultural traditions and young people. For further information, contact the council's creative community advisor, Anique Jayasinghe, on 06 349 3086 or email [anique.jayasinghe@whanganui.govt.nz](mailto:anique.jayasinghe@whanganui.govt.nz)

## Public Art Fund

This fund supports artists to create vibrant and engaging artworks in Whanganui's public spaces. A range of temporary or permanent artworks are eligible for funding including, but not limited to, pou whenua, digital art, street art or moving image works.

More information available by contacting the council's creative community advisor on 06 349 3086, or email [anique.jayasinghe@whanganui.govt.nz](mailto:anique.jayasinghe@whanganui.govt.nz)

## Heritage Grant Fund

This fund provides a financial incentive to private building owners to undertake work to enhance the historic character of heritage sites in Whanganui. Heritage buildings in the town centre are eligible, as are sites outside the CBD where substantial community benefit can be demonstrated.

For further information about eligibility or other enquiries, contact the council's heritage advisor, Scott Flutey, on 06 349 3168, or email [scott.flutey@whanganui.govt.nz](mailto:scott.flutey@whanganui.govt.nz)

For more information on funding options, visit:  
[www.whanganui.govt.nz/funding](http://www.whanganui.govt.nz/funding)

## Welcoming Activities Grant

This grant supports initiatives that help to make Whanganui more welcoming for newcomers. Groups can apply for up to \$1000 in financial support for activities that enhance newcomer experiences in Whanganui, such as improving access to information and services, celebrating culture and supporting civic and economic opportunities.

For further information contact the council's community activator, Harriet McKenzie, on 027 214 3198 or email [harriet.mckenzie@whanganui.govt.nz](mailto:harriet.mckenzie@whanganui.govt.nz)

For more information on funding options, visit:  
[whanganui.govt.nz/funding](http://whanganui.govt.nz/funding)



# Parks, reserves and gardens

Wanganui has many attractive parks, reserves and open spaces that provide residents and visitors with a huge range of opportunities for engaging with the outdoors.

They include a number of iconic and nationally significant parks such as Virginia Lake, Kowhai Park, Cooks Gardens and Bason Botanic Gardens, as well as numerous small parks and playgrounds which help create a sense of community in our neighbourhoods. The district also has 113-hectares of sports grounds.

More information about our parks can be found at:

[www.whanganui.govt.nz/parks-reserves](http://www.whanganui.govt.nz/parks-reserves)

To book a park, visit:

[whanganui.govt.nz/book-a-park](http://whanganui.govt.nz/book-a-park)

## Bason Botanic Gardens

The Bason Botanic Gardens are rated as a 4-star garden by the New Zealand Gardens Trust. Drive or walk through the gardens, use the free gas-fired barbecues or take a picnic and enjoy the lake and birdlife. A nine-hole disc golf course is also available. Three conservatories feature an extensive orchid collection, begonias and bromeliads. Entry is free. Visit: [basonbotanicgardens.org.nz](http://basonbotanicgardens.org.nz)



Rotokawau Virginia Lake

**For the biggest range  
of hire equipment  
in town**

- **MARQUEES**
- **MACHINERY HIRE**
- **PARTY HIRE & SALES**

**Locally Owned &  
Operated Since 1975**

**06 345 7017**  
**26 CHURTON STREET**  
[www.hiremasterwanganui.co.nz](http://www.hiremasterwanganui.co.nz)

**justcuts**

No appointments™.

Just come in™.

**Need a haircut?**

**We've got you.**

Trafalgar Square Shopping Centre,  
Taupo Quay.

**OPEN  
7  
DAYS**



No appointments:  
Just come in:  
[justcuts.com](http://justcuts.com)

**justcuts**

Exclusive stockist of  
**JUSTICE**  
HAIRCARE™



## Bushy Park Tarapurui

At Bushy Park Tarapurui, 25km from Whanganui on Rangitatau East Road, you will find lush lowland forest and encounter rare native bird species such as North Island robins, saddlebacks and hihi. There are walking tracks and a large northern rata believed to be the largest rata tree in the southern hemisphere. The sanctuary is free to visit during daylight hours. Bushy Park Sanctuary also has a 22-room Edwardian-era homestead with accommodation available. Visit: [bushypark.nz](http://bushypark.nz)

## Cooks Gardens

One of New Zealand's leading outdoor sporting venues, Cooks Gardens features a 400m all-weather synthetic athletic track and a velodrome. It is famous as the venue where Peter Snell broke Herb Elliott's mile world-record in 1962 on a grass track covering the distance in 3 minutes 54.4 seconds.

## Glenlogie Rose Gardens

A colourful seasonal display of roses, opposite Kowhai Park. Great as a summer wedding venue.

## Gordon Park Scenic Reserve

This 14.5-hectare reserve is a precious sample of the lowland forest type once common in this area and is home to an interesting array of birds.

## James McGregor Memorial Park

Connected to Kowhai Park, this gorgeous riverside park offers an

extensive arboretum area perfect for picnics.

## Kowhai Park

Designed in the 1950s and a great favourite with children. Ride a brontosaurus, swing on an octopus, see-saw with a snake or picnic in a pumpkin, all in a gorgeous woodland riverbank setting on Anzac Parade.

## Lake Wiritoa

A coastal dune lake a few minutes south of Whanganui set among five hectares of park-like grounds. Take a family picnic or go swimming, water skiing, boating, swimming, fishing and mountain biking. Camping is available nearby.

## Paloma Gardens

A private garden, rated a Significant Garden and given a 5-star rating by the New Zealand Gardens Trust. Its exotic collection of plants from Africa, Asia and the Americas covers a site that also offers picnic areas and accommodation. It is located 20km from Whanganui at Fordell. Entry charges apply. Visit: [paloma.co.nz](http://paloma.co.nz)

## Peat Park

An established park with wide-open spaces, a playground and the opportunity to get up close with deer.

## Rotokawau Virginia Lake

This is an iconic park where you can picnic by the lake or take a 25-minute woodland walk that features a statue

of Tainui, a band rotunda, twin bridges and wisteria pergolas. There is also a bird aviary to explore as well as the indoor Winter Garden, an Art Deco-era conservatory with colourful themed gardens.

## Roto Mokoia Lake Westmere

This wildlife refuge includes a nine-hectare lake within 20 hectares of bush and tracks.

## Springvale Park

An 11-hectare complex, comprising multi-use venues for a variety of sports including the Splash Centre pool complex and the bike park that caters for very young riders up to teenagers wanting more of a challenge.

## Waitahinga Trails

Waitahinga Trails is a collection of walks catering to different fitness levels (some are moderately-challenging) at the disused Whanganui Water Catchment Reserve on Rangitatau East Road. The walks cater to different fitness levels with picnic spots and lookouts. Peaceful and beautiful, the Waitahinga Dam makes for a worthwhile destination.

## Westmere Walkway

The walkway, accessed via Kelvin Street, Aramoho, traverses rolling countryside and provides magnificent views over the city and the river. It is steep in sections and requires a moderate level of fitness. Walks of different lengths are available.



# Whanganui Mūmū Whanganui by Design



### Whanganui Mūmū - Whanganui By Design

In this must-see experience, the past, present and future of Whanganui design is honoured with an eclectic, diverse selection of taonga and objects designed and made in the Whanganui region.







The Titoki Wetland Reserve

## Adventure and outdoors

### Canoeing and jet boating

There are a number of ways to explore Whanganui River's picturesque middle and lower reaches – the multi-day canoe trip, known as the Whanganui Journey, is one of New Zealand's Great Walks. Jet boat rides are a thrilling way to reach the Bridge to Nowhere and several iwi-owned businesses offer guided canoe and cultural tours. Please speak to the Whanganui isite Visitor Information Centre team who can explain all the options available and essential information, in addition to booking your trip.

### Fishing and hunting

The upper reaches of Whanganui River are home to brown and rainbow trout, and coastal fishing can be enjoyed from breakwaters and beaches.

The Whanganui district offers top-quality outdoor adventure for hunting enthusiasts – red, sika and fallow deer, goats and boar.

### Golf

The Whanganui Golf Club at Belmont is New Zealand's oldest golf club. Both this and the Castlecliff Golf Club are championship courses. The Rivercity Golf complex in Tawhero features a nine-hole public course and driving range.

### Heritage and city walks

Whanganui is great for self-directed walks around the city that take in our historic architecture and many heritage sites. Alternatively, guided walks are available on weekends (except winter) or by special arrangement. For more details, contact and book with Whanganui isite Visitor Information Centre.

### Mountain biking

Ride recreational tracks at Hylton Park, Araheke MTB Park and That Place – Mountain Bike Park or experience the Mountains to Sea Ngā Ara Tūhono

Cycle Trail – an eight-section, multi-day ride through mostly Department of Conservation-administered land. A cycle and pedestrian bridge at Upokongaro (10.5km north of Whanganui city) is part of the Mountains to Sea Cycle Trail. For more information, visit: [mountainstosea.nz](http://mountainstosea.nz)

### Skate and bike parks

Whanganui has banks, bowls, lips and stairs for skaters and BMX riders at the centrally-located Kowhai Park and in the seaside suburb of Castlecliff. The Springvale community bike park next to the Splash Centre is also worth checking out.

### Skiing and snowboarding

You can be on the slopes of Mt Ruapehu – which offers world-class skiing and snowboarding – within a two-hour drive of Whanganui.

### Surfing

Whanganui has a range of beaches within minutes of the city centre with conditions to challenge surf enthusiasts of all abilities.

### Tramping

Whanganui National Park offers multi-day hikes, and one of the popular local walks: the Atene Skyline Track, which is a loop that takes about 6-8 hours. A shorter walk to the track's lookout is two hours' return. Tongariro National Park and Egmont National Park are both less than two hours away from Whanganui. Contact Whanganui isite Visitor information Centre for advice and essential safety information when planning your outings.

# noire

Noire is a women's fashion store that believes style is a expression of individual mixed with a dash of caracher& charm

TELEPHONE (06) 347 8214  
92 VICTORIA AVENUE, WANGANUI  
[noire@andersonswanganui.co.nz](mailto:noire@andersonswanganui.co.nz)

## The Sewing Centre



### Clothing Repairs & Alterations for your special day

165 Victoria Ave Wanganui  
Ph: (06) 345 2299

## ANDERSONS Menswear

All you need to look your best for an speial event

65 VICTORIA AVE, WANGANUI  
PH: 345 5220  
[www.andersonswanganui.co.nz](http://www.andersonswanganui.co.nz)





## Whanganui isite Visitor Information Centre



The Whanganui isite Visitor Information Centre is a place where visitors and locals can find information about events, exhibitions, places of interest and attractions offered in our region and the city.

Near the intersection of Taupo Quay and Drews Avenue, the Whanganui isite opens directly onto the riverside walkway area and has been remodelled from an existing warehouse. The isite is spacious, light

and airy and our friendly staff aim to do their best in providing you with all the travel and visitor information and bookings you need.

The isite is an agent for booking services such as InterCity buses,

## BRIDGE TO NOWHERE Lodge and Tours

Mountains to Sea / Mangapurua Track / Whanganui River

### For all your activities on the Whanganui River

- Bridge to Nowhere jet boat tours 4+ hours
- Mountain biking shuttles to and from track
- Bridge to Nowhere Lodge - fully catered or backpacker accommodation, licensed bar
- Bridge to Nowhere Campground - cabins, hot showers
- Tramping - Mangapurua and Matemateaonga Tracks



Freephone 0800 480 308 or 06 385 4622

Email: [bridgetonowherebookings@gmail.com](mailto:bridgetonowherebookings@gmail.com)

Web: [www.bridgetonowhere.co.nz](http://www.bridgetonowhere.co.nz)

**BOOKINGS ARE ESSENTIAL**





InterIslander and Bluebridge ferrys across Cook Strait, Air Chathams flights, Department of Conservation Great Walks, local and national accommodation bookings and local experiences including riverboat cruises, canoeing trips, Mountain to Sea packages and Bridge to Nowhere jetboat tours.

The isite is also an agent for online event ticketing websites Eventfinda and iTICKET, and sells tickets to local annual events such as the annual Cemetery Circuit motorcycle street race, Shelterview Jet Sprints, Whanganui Summer Programme, Vintage Weekend, Artists Open Studios guides and all local Amdram productions.

### Camping

Getting out and about in our district's beautiful river and coastal areas is popular with visitors and Whanganui locals alike and our district welcomes campers.

We are privileged to have several fantastic commercial campgrounds and family-

friendly holiday parks, all in great proximity to our scenic coastal areas and the Whanganui River.

We also welcome freedom campers – regulations are in place about where people can freedom camp to help protect our public places and ensure access for everyone.

For expert local advice, further help on your stay or more information on freedom camping in Whanganui including where freedom camping sites are located, how long you can camp for and what's nearby for visitors, contact the friendly team at our Whanganui isite Visitor Information Centre or browse our online guides on where to stay at: [discoverwhanganui.nz/visit/accommodation](https://discoverwhanganui.nz/visit/accommodation)

Whanganui isite Visitor Information Centre  
Phone: 06 349 0508  
Address: 31 Taupo Quay, Whanganui

For more tips and advice on camping responsibly throughout New Zealand, visit: [camping.org.nz](https://camping.org.nz)



The Kereru sculpture near the isite



### ART + GIFTS + COFFEE

Eighty Eight Putiki is an art and gift shop in the heart of Putiki, Whanganui – we also serve up a pretty good cup of coffee if you're instore! We stock a beautiful range of art, gifts, books, stationery, jewellery, ceramics, craft and homewares, created by talented New Zealanders.

**We love what we do and  
hope you do too!**





Kai Iwi beach

## Beaches and swimming pools

Whanganui has two public swimming pools – the Splash Centre at Springvale Park and the outdoor Whanganui East Pool swimming complex in Tinirau Street.

The Splash Centre is an indoor facility with lane swimming, a lazy river, spa pools, sauna, steam room, toddlers' pools, hydrotherapy pool, two hydrosides, barbecue area and a gym.

There are daily fitness classes during the week and Learn to Swim classes.

Whanganui East Pool is open over summer and includes barbecue areas and an outdoor hydroslide.

Contact the Splash Centre on 06 349 0113, email [splashcentre@splashcentre.co.nz](mailto:splashcentre@splashcentre.co.nz) or visit: [pools.whanganui.govt.nz](http://pools.whanganui.govt.nz) for lane availability and customer portal.

### Castlecliff Beach

A short drive from the city centre, this beach is popular for swimming and is patrolled by lifeguards during summer from 12 noon until 6pm daily. There is also a playground, skate park and basketball hoops at the nearby Castlecliff Domain. The North Mole is a great fishing and surfing spot. A cafe and dairy are nearby for beach treats.



# PET DOG SCHOOL






## EXPERIENCE THE DIFFERENCE




5 Caversham Rd, Springvale, Whanganui | 06 345 2553  
[www.petdogschool.co.nz](http://www.petdogschool.co.nz) | [training@petdogschool.co.nz](mailto:training@petdogschool.co.nz)  
 Follow us on facebook 

## Rachel Brandon Designing Interiors



-  Interior/exterior colour schemes
-  Kitchen/bathroom layouts
-  Custom made furniture
-  Supplier of fabrics and wallpapers
-  New builds/renovations/commercial



Dip Int. Dsgn-11 years Industry Experience  
**Ph: 027 207 2798 E: [rachel@rbdi.co.nz](mailto:rachel@rbdi.co.nz)**  
**W: [www.rbdi.co.nz](http://www.rbdi.co.nz)**



## Kai Iwi Beach (Mowhanau)

A family-friendly beach offering swimming, fishing, a playground, wood-burning barbecues and a great place for camping. Kai Iwi Beach is reached via Rapanui Road 14km west of Whanganui and is patrolled by lifeguards during summer from 12 noon until 6pm daily. Take extra care around the cliffs as they are prone to slipping.

## South Beach

As soon as the tide goes out, South Beach (near Whanganui Airport) becomes a 20km stretch of sand, excellent for a day's picnic, surfing or fishing. There is a car-parking area and a short walk to the beach, but for full beach access a 4X4 is advised. Take care at all times and watch the tides as South Beach is great fun but an unpatrolled area.

## Ototoke Beach

A little further north of Kai Iwi Beach, near Pākaraka, Ototoke Beach is a classic out-of-the-way New Zealand beach. Located at the end of Ototoke Beach Road, this beach is popular spot for swimming and fishing. The path from the car park descends past the Ototoke pool and waterfall down to the beach below.

## Whanganui River

Whanganui River winds through the middle of the city and is used by some for cooling off during warmer days. Debris can often hide under the water's surface so it is important to keep an eye out for hidden objects, as well as boats and rowers, when enjoying the water. The Whanganui

Port area is not safe to swim at. There has been an increase in activity on the river with both powered and unpowered craft and swimmers – please remember to share the spaces so that everyone can enjoy the awa.

## Beach and water safety

As beautiful as our beaches may appear, they can also be dangerous.

- Swim only at lifeguard-patrolled beaches (red and yellow flags will be visible)
- Always swim between the red and yellow flags
- Never swim alone or leave children unattended

During the summer season, check out the local Surf Life Saving Facebook

page for updates on conditions at Castlecliff and Kai Iwi beaches at: [facebook.com/Wanganui-Surf-Lifeguard-Service-Inc](https://facebook.com/Wanganui-Surf-Lifeguard-Service-Inc)

Safer Whanganui also has useful information about staying safe while enjoying some of our popular swim spots over the summer months. This includes information about rips and swimming at areas other than our beaches. For more information, visit: [whanganui.govt.nz/safer-whanganui](https://whanganui.govt.nz/safer-whanganui)

You can also check out other the latest water-quality information at: [lawa.org.nz/explore-data/swimming](https://lawa.org.nz/explore-data/swimming)

Find other water safety messages at: [watersafety.org.nz](https://watersafety.org.nz)



The toddlers pool at the Splash Centre



# JJ Roofing

Contractors Ltd.

Proudly  
Supplied by



## Join JJ's List of Happy Customers

**Business Hours:**  
7.30am-5.00pm  
Monday - Friday  
Saturday & Sunday - Closed

**Head Office**  
139A Ridgway St  
PO Box 4374  
Whanganui, NZ

**Phone:**  
(028) 422 3351  
**Email us:**  
[office@jjroofing.co.nz](mailto:office@jjroofing.co.nz)



# Join Ruapehu Adventure Hub for your next adventure in the Ruapehu and Whanganui Regions.

Ben and Rebecca have grown up in Whanganui and Ruapehu, and have spent the last 14 years helping visitors from all over the world experience some amazing spots in our region. Operating Whanganui River Canoes, the Raetihi Holiday Park and Mountain Bike Station, you can get in touch with us and we will be able to help you plan your perfect stay.

Our Holiday Park in Raetihi is a perfect spot to use as your base for all of your adventures, with cozy cabins and powered/non powered sites with Mountain Views.

At Whanganui River Canoes we love to help you explore the Whanganui National Park for freedom hire or guided trips over 3, 4 or 5 days. We offer a full service with safety briefings, paddling equipment, and shuttles to the Whanganui River and back.

Mountain Bike Station offers itinerary planning and booking for your ride on the Mountains to Sea Cycle Trail. Send us through your details, with the trip you would like to book and we will

do all of the planning for you. Ride from the ski fields on Mount Ruapehu, stay in boutique accommodation along the trail, experience forests, rivers, jet boat, canoe, river boats and meet locals along your ride. Throughout your ride, we are there to support you, transporting your luggage and offering briefings for each section of your ride.



## **RUAPEHU ADVENTURE HUB:**



Email [info@ruapehuadventurehub.co.nz](mailto:info@ruapehuadventurehub.co.nz)

Website <https://www.ruapehuadventurehub.co.nz/>

Phone 0800 40 88 88

## **MOUNTAIN BIKE STATION:**



Email [info@mountainbikestation.co.nz](mailto:info@mountainbikestation.co.nz)

Website <https://www.mountainbikestation.co.nz/>

Phone 0800 BIKING

## **WHANGANUI RIVER CANOES:**



Email [info@whanganuirivercanoes.co.nz](mailto:info@whanganuirivercanoes.co.nz)

Website [www.whanganuirivercanoes.co.nz](http://www.whanganuirivercanoes.co.nz)

Phone 0800 40 88 88

## **RAETIHI HOLIDAY PARK**

Email: [info@raetihiholidaypark.com](mailto:info@raetihiholidaypark.com)

Website [www.raetihiholidaypark.com](http://www.raetihiholidaypark.com)

Phone 0800 40 88 88







**HARDY**  
**CONSTRUCTION** LTD.



***Building high quality homes, alterations  
and additions across the region***



0210 223 6711  
sam@hardyconstruction.co.nz | hardyconstruction.co.nz





# Libraries and community hubs

Our libraries are safe, community spaces welcoming more than 300,000 visitors every year. We connect people to literature, knowledge, entertainment and the world, with more than 100,000 books, magazines and DVDs in our physical libraries.

Free unlimited wi-fi and free-to-use desktop computers are available in the Davis and Gonville libraries and we run holiday programmes and events throughout the year for children and families.

Our digital collection includes more than 40,000 eBooks, eAudiobooks and eMagazines, film and TV streaming services Kanopy and Beamafilm, free music streaming with Freegal, online training through LinkedIn Learning, as well as access to hundreds of national and international newspapers and magazines via PressReader.

You can search the collection, reserve and renew books, manage your library account and access our digital services through the library website from anywhere with an internet connection!

## Whanganui District Libraries

- The 'Davis' in Pukenui Queen's Park - our central library
- The 'Alexander' in Pukenui Queen's Park - the home of heritage, whakapapa and research services.
- Gonville Library at 44 Abbot Street
- Two mobile library vans which visit schools and rest homes and service suburban and rural communities

- The Library Home Service which brings the library to those who can't get to library venues
- Self-service hubs - these self-service hubs are run by volunteers in conjunction with the community:
  - o Hakeke Street Library at 65 Hakeke Street - in partnership with the Hakeke Street Community Centre
  - o Rangiora Street Library at 10 Rangiora Street - in partnership with Progress Castlecliff
  - o Aramoho Library at 2 Mitchell Street -

in partnership with Pasifika Vision Forum Trust.

## Joining

It is free to join the library - you can register online or at any branch. Then bring some form of identification, such as your driver's licence or passport to the library to complete registration and get your library card - with your all-important membership number.

For more information about our libraries call 06 349 1000 or visit: [whanganuilibrary.com](http://whanganuilibrary.com)

## Opening hours

|   |   |
|---|---|
| Davis Library                               | Monday to Friday 9.30am to 6.00pm, Saturday 10.00am to 5.00pm, Sunday 10.00am to 3.00pm   |
| Alexander Library Te Rerenga Mai o Te Kāuru | Monday to Friday, 9.30am to 5.00pm  |
| Gonville Library                            | Monday to Friday 9.00am to 5.00pm, Saturday 10.00am to 2.00pm, closed Sunday  |
| Hakeke Street Library                       | Monday to Friday 9.00am to 1.00pm   |
| Rangiora Street Library                     | Thursday, Friday 11am to 3pm, Saturday, Sunday 10am to 2pm  |
| Aramoho Library                             | Tuesday to Friday 11.00am to 3.00pm   |
| Mobile Library                              | Check our timetable at <a href="http://map.whanganuilibrary.com">map.whanganuilibrary.com</a>   |
| Suzanne Aubert Library                      | This library at St Joseph's Church in Jerusalem, RD6 on the Whanganui River Road, is open on request.<br>Call 06 342 8190 or email <a href="mailto:old.convent@compassion.org.nz">old.convent@compassion.org.nz</a> |



## Ready to start planning your wedding?

There is a lot to do which is stressful. Let me reduce the stress by taking care of the legal part and designing the ceremony to reflect your own unique style.

Contact me to discuss how I can help you make your wedding ceremony very special.

Mobile: 029 242 2440

Email: [kate@kandjenterprises.info](mailto:kate@kandjenterprises.info)

Website: [www.katesmith.nz](http://www.katesmith.nz)

# WORSLEY'S

**WATER SUPPLIES**  
SUPPLIERS OF FRESH WATER FOR:  
• Water Tanks • Swimming Pools

**Liquid Waste Disposal and Cleaning of**  
• Septic Tanks • Grease Traps • Rainwater Tanks



**CHRIS WORSLEY**

**06 345 6037**

**worsleys@xtra.co.nz**

**Mobile 0274 442 770**



# Come in and see the team

*For great advice, quality products and an extensive range of gift selections - FREE gift wrapping*



PHARMACY

**145**

145 Victoria Ave,  
Whanganui

**MOR**

Melbourne Australia

**MOR**

Indulge in the luxurious collections of Bath & Body and fine fragrance

**BePURE**

**BePURE**

High Strength, High Quality supplements to support your wellbeing



**KAMA**

The original Love Oil, Perfumes, Bodycare and Diffusers

**RAWW**

superfood infused beauty

**RAWW**

Australian Organic, Superfood infused Beauty, Skincare and Aromatherapy

**LINDEN LEAVES**  
NEW ZEALAND

**LINDEN LEAVES**

Beautiful Skin Care, Body Care, Home Fragrances. Developed and made in New Zealand



**SOLGAR**

Vitamins and Supplements For Health and Wellbeing

SINCE **SCULLY'S** 1992

**SCULLY'S**

Made in New Zealand For Bath, Body and Home

**LIVING LIGHT**

**LIVING LIGHT**

Made in New Zealand Bespoke, handcrafted, fragrant Icicle Candles

**06 345 8666 | [pharmacy145@hotmail.com](mailto:pharmacy145@hotmail.com)**



# Education and youth

Whanganui's early learning centres, schools and tertiary institutions offer a diverse range of opportunities and communities to make students feel at home and supported.

Excellent schools, community events, opportunities in sport and arts, and a relaxed pace of life give students all they need to succeed. It is easy and safe for them to get around and they are well connected to the rest of the country and the world with ultra-fast broadband.

Whanganui has international recognition as a UNESCO City of Design, recognising its strengths as a wonderful place to learn, grow and be nurtured.

## Early childhood education

Early learning services provide education and care for children before they are old enough to go to primary school.

Whanganui has more than 50 kindergartens, play centres, childcare centres, home-based networks, correspondence school, play groups and Te Kōhanga Reo.

For all registered ECE providers in our district, visit: [education.govt.nz](http://education.govt.nz)

## After-school care

Children under the age of 14 must not be left alone without reasonable care and supervision. OSCAR (Out of School Care and Recreational

Programme) and other before- and after-school care services are available in Whanganui. Ask your child's school for more information.

## Primary and secondary schools

Parents and caregivers are welcome to visit schools and meet with the principal and other staff prior to enrolling their child.

Most schools have a brochure / prospectus that provides information about the school and what it offers.

The Ministry of Education website at: [education.govt.nz](http://education.govt.nz) provides a searchable school database and includes information about the school's profile and contact details, student population, student engagement and finances.

Some schools have an enrolment zone where only children living in the zone can attend.

For more information about schools in the Whanganui district, visit: [educationcounts.govt.nz](http://educationcounts.govt.nz)

## Tertiary and community education providers

Whanganui is a regional centre for tertiary education. A diverse range of qualifications are available across our tertiary providers, giving students the opportunity to choose the perfect path for them.

There are tech and trade programmes, creative industries courses, commercial pilot training through the New Zealand International Commercial Pilot Academy, social and community services programmes and courses for subjects including nursing, business administration, hairdressing and chef training.

For a supported process to getting young people work-ready in Whanganui, the Whanganui District Employment Training Trust's 100% SWEET programme is designed to help young people engage in education, training and employment: [wdett.org.nz](http://wdett.org.nz)

## Tertiary providers

### AGC Training Limited

No. 3 Line, Okoia, Whanganui  
06 348 8215 and 0800 348 8215  
[agctraining.co.nz](http://agctraining.co.nz)

### Community Education

24 Taupo Quay, Whanganui  
06 345 4717  
[communityeducation.nz](http://communityeducation.nz)

### English Language Partners

Suite 6, 66 Ingestre Street, Whanganui  
06 345 1778  
[englishlanguage.org.nz/centres/whanganui](http://englishlanguage.org.nz/centres/whanganui)

### Land Based Training

191 St Hill Street, Whanganui  
0508 872 466  
[landbasedtraining.co.nz](http://landbasedtraining.co.nz)



**SKELSEY  
PLASTERERS**

**> GIB Plasterboard  
Installation and Stopping  
Telephone 06 343 6110  
Email: [office@skelseyplasterers.co.nz](mailto:office@skelseyplasterers.co.nz)**

SEVENTY SIX YEARS  
IN BUSINESS

[www.skelseyplasterers.co.nz](http://www.skelseyplasterers.co.nz)



### New Zealand International Commercial Pilot Academy

25 Airport Road, Whanganui  
06 927 6332  
[nzicpa.nz](http://nzicpa.nz)

### Te Wānanga o Aotearoa

Level 1, 68 Victoria Ave, Whanganui  
0800 355 553  
[twoa.ac.nz](http://twoa.ac.nz)

### Training For You

144-152 Ingestre Street, Whanganui  
06 349 0047 and 0800 438 848  
[trainingforyou.co.nz](http://trainingforyou.co.nz)

### UCOL Te Pūkenga Whanganui

16 Rutland Street, Whanganui  
022 0181 415  
[ucol.ac.nz](http://ucol.ac.nz)

### Whanganui Learning Centre

232 Wicksteed Street, Whanganui  
06 348 4950  
[wlct.org.nz](http://wlct.org.nz)

## Youth Council

Whanganui District Council's Youth Council is a collective of rangatahi aged 12-24 who represent the voice of young people across the district. Youth Councillors and volunteers share a passion for youth issues. The Youth Council allows the youth within our community to speak up, contribute and have a say on matters important to them.

The role of the Youth Council is to:

- represent the community's young people
- promote opportunities for youth participation

- develop and monitor policy on youth issues
- provide opportunities to contribute to the decision-making of Whanganui District Council
- advise the council on matters of interest for youth in the Whanganui District.


To find out more about the Youth Council, visit:

[whanganui.govt.nz/youthcouncil](http://whanganui.govt.nz/youthcouncil)

or check out our socials:

Facebook @WDCYouthCouncil or


Instagram @youthvoicewhanganui


## EDUCATION

### What do you want for your Daughter?

Independence? Freethinker? Self-motivation?  
High Academic achievement? Sound Values?  
Essential Skills? Knowledge? Grounded Beliefs?  
Life skills? Interpersonal Skills? Great Work Ethic?  
Multi-Cultural appreciation?



**Whanganui Girls' College**  
*Where Girls Shine*



Ad Astra Hostel, Empowering Girls to take their place in the world  
Together, Reaching for the Stars  
Call now to find out how your daughter can be a part of this Journey  
06 349 0944 | [admin@wgc.ac.nz](mailto:admin@wgc.ac.nz) | [www.wgc.ac.nz](http://www.wgc.ac.nz)



## Whanganui Boys & Girls Gym Club

*Gymnastics for All*



### WE OFFER:

- Men's artistic gymnastics • Women's artistic gymnastics • Aerobics
- Recreational gymnastics • Pre-school sessions • Parkour Gym
- Tumbling • Adult gymnastic sessions • Group sessions
- Private gymnastic coaching • Trampolining • Birthday Party bookings
- Group accommodation • OSCAR approved holiday programmes

## CONTACT US TODAY

Phone: 06-345-8670  
[whanganuigymclub.co.nz](http://whanganuigymclub.co.nz)



# Health and wellbeing

**For all serious accidents and emergencies, free call 111**

## Whanganui Hospital

Te Whatu Ora Whanganui oversees all healthcare within our district including maternity, mental health and addiction services, medical and surgical wards and emergency care. For patient or general enquiries, call 06 348 1234.

## After-hours accident and medical care

The Whanganui Accident & Medical (WAM) clinic is located in Whanganui Hospital next to the Emergency Department and focuses on assessment and treatment of accidents and injuries, as well as providing after-hours general medical care. Open seven days, 8.00am to 8.00pm, including public holidays. No appointment is necessary. Call 06 348 1300.

## Virtual Winter Respiratory Clinic – 0800 111 211

A clinician-led virtual clinic for whānau who are unwell with colds, flu, COVID-19 and respiratory illness. Open 10.00am to 5.00pm Monday to Sunday.

## Healthline 0800 611 116

This free-call information service is for all the family. The service is staffed by registered nurses who will assess your general health needs and give you information and advice to help you decide on the best level of care, 24 hours a day, seven days a week.

## COVID-19 Healthline – 0800 358 5453

This free-call service is supporting people with information and advice about COVID-19, 24 hours a day, seven days a week.

## General practitioner (GP)

For day-to-day healthcare, it is recommended you register with a GP. Most practices are currently at capacity, but some are enrolling people new to Whanganui and those with no existing local GP. Visit: [wdhb.org.nz](http://wdhb.org.nz) and click on the Your Health - Resources tab for contact information on general practices and midwives.

## Dental care

There is a range of dentists in Whanganui providing treatment at your own expense. Children are entitled to free basic oral health services from birth until they turn 18. Whanganui Hospital also provides a range of outpatient and inpatient oral health services on referral from a medical or dental practitioner. For more information, visit: [wdhb.org.nz](http://wdhb.org.nz)

## Pharmacists

Pharmacists can recognise minor ailments and help choose medicines and healthcare products to treat these ailments. For a list of pharmacies and their contact details, visit: [wdhb.org.nz](http://wdhb.org.nz).

## Belverdale Hospital

A privately-owned surgical hospital that accepts medical insurance or privately-paying patients. Visit: [belverdale.co.nz](http://belverdale.co.nz).

## Mental health

For support with mental health you can ask your GP to refer you to a specialist service or if you or someone else is at risk of injury, free call 111. If you need someone to talk to, Lifeline is a free-call 24-hour support line: 0800 543 354 or [lifeline.org.nz](http://lifeline.org.nz)

You can also send a text at any time to HELP (4357) for support from a trained counsellor.

## Family harm

Family harm is against the law in New Zealand. It covers physical, sexual or physiological abuse as well as threats and damage to property. Police take family violence seriously. If you are worried for your own or someone else's safety, free-call 0800 456 450 or visit: [familyviolencewhanganui.org](http://familyviolencewhanganui.org)

## If it is an emergency, call 111.

There are a number of Whanganui and national helplines available, including: SHINE – 0508 744 633  
Safe to talk – 0800 044 334  
Hey Bro He Waka Tapu – 0800 439 276

## Other Whanganui agencies:

Women's Refuge – 06 344 2204  
Family Works – 06 345 6681  
Te Oranganui Whanau and Community Services – 06 349 0007  
Jigsaw – 06 345 1636  
Oranga Tamariki – 0508 326 459  
Whanganui Safe and Free – 06 343 3416  
Tupoho Iwi and Community Social Services Trust – 06 345 2042



The team at  
**AIR WHANGANUI**

**The Air Whanganui  
and flight nurse teams are  
proud to provide the  
air ambulance service  
to Whanganui and  
surrounding regions.**

office **06 348 9210** or **0800 200 290**  
[www.airwhanganui.co.nz](http://www.airwhanganui.co.nz)



# Wanganui Eyecare

## Your local Optometrist

**2024 is here, and there is no better time to organise your eye exam!**

We are a locally owned, independent Optometrist with over 50 years of industry experience.

We work hard to create a positive team culture, and to deliver a patient-focused service in a warm and welcoming environment.

### We specialise in:

- General Eyecare
- Treatment of infection, disease and injury
- Dry Eyes
- Myopia Control
- Complex contact lenses including Orthokeratology
- Children's Vision
- CAA, Maritime & Police Examinations

### CONCERNED ABOUT SHORT-SIGHTEDNESS IN CHILDREN?

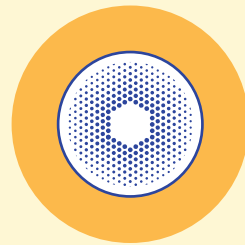
#### - Follow these tips -



Outdoor activity lowers the risk of developing myopia. Aim for at least two hours a day.



When on a computer or your phone, rest your eyes every 20 minutes and look 20 feet (6metres) away for 20 seconds.




Consider MiYOSMART spectacle lenses, shown to slow down myopia progression by 60% on average.

(Compared to wearing standard single vision lenses).

211 Wicksteed Street, Whanganui  
Phone 06 345 4665



[wanganuiyecare.co.nz](http://wanganuiyecare.co.nz)

  [wanganuiyecare](#)



# Business and economy

**W**hanganui & Partners is Whanganui's economic development agency, regional tourism organisation and regional film office. Whanganui & Partners manages the city's UNESCO City of Design designation and the Whanganui isite Visitor Information Centre..

We lead and drive opportunities for the Whanganui region through business, education and lifestyle. We support new and existing businesses, bring events to Whanganui and provide the latest economic data, analysis and commentary on the Whanganui region. We work with stakeholders from our agricultural industries, creative industries and arts, manufacturing, logistics, education and visitor industries. Our work supports and promotes our economy's strengths, capabilities and exceptional advantages.

We focus on Whanganui's surge sectors and the key drivers that enable our economic growth.

## Advanced manufacturing and logistics

We work to attract investment in our region and help Whanganui businesses achieve growth and build resilience. We create opportunities through Whanganui's UNESCO City of Design status, promoting Whanganui's manufacturing strengths in international networks.

We work closely with businesses across sectors, connecting them to the people and resources that enable their success. We support innovation and entrepreneurship, connect businesses to funding opportunities, and facilitate the important connections that enable success.

## Primary industries

We promote Whanganui's agricultural excellence and support our food and fibre sector to build strength and resilience. We champion Whanganui's strengths in agritech, innovation, product development and diversification initiatives.

Whanganui & Partners is committed to supporting Māori landowners in the development of their whenua and creates opportunities to share agricultural knowledge and education.

## Creative industries

As a UNESCO City of Design, Whanganui takes pride in the strength of our creative tradition. Whanganui's creative sector is at the heart of our economic and cultural identity and is a driver of employment and business opportunities. Whanganui & Partners is committed to bolstering our creative industries.

We support Whanganui's creative industries with professional development and resources and through connection to the UNESCO Creative Cities Network, our creatives benefit from partnership with a global community of cities, major institutions and indigenous artists.

## Visitor industries

We work with tourism operators and regional partners to ensure visitors to Whanganui enjoy their time here

Mitre 10 MEGA Wanganui has been a part of the Wanganui home improvement culture since 2005. Locally owned and operated we are Wanganui's largest home improvement retailer. Committed to providing the inspiration, advice, tools and materials our customers need to see their home improvement project through to completion



and our local industries and economy flourish. We fund the events that bring life and excitement to the city, and support new product development to complement Whanganui's fast-growing profile as a destination of choice.

We focus on destination management, building a resilient and sustainable visitor industry that benefits all who visit and live in Whanganui

### Education and capability

We work closely with education providers and industry to make sure that the right training and educational opportunities are available to build the skills that our economy needs. We work to bring international students to Whanganui and to raise Whanganui's profile as a destination of choice for international study.

We want people to have the opportunity to engage in high-value rewarding work, for our economy to be supported through productive international study pathways, and for businesses to be able to find the right people to meet their needs.

### Māori economy

Whanganui & Partners works to support the growth and success of

pakihi Māori. We believe Whanganui's economy should a path for prosperity, maximising potential for Māori through regional economic development. Our work alongside local pakihi helps ensure the potential of our Māori businesses is realised and celebrated. We build partnerships with Māori to establish, develop and implement economic projects for the benefit of Whanganui whenua and whānau.

### Marketing

We champion Whanganui's UNESCO City of Design status and shape our Whanganui brand to be a point of distinction.

Our brand and strength of identity contribute to Whanganui's reputation, which attracts investment, business, people, students, events and visitors.

We promote Whanganui across Aotearoa with advertising and PR activity designed to raise Whanganui's profile and build awareness of Whanganui's strengths and opportunities.

### Business development

Whanganui & Partners has an in-house business team which helps

Whanganui business owners and sole traders identify challenges, needs and opportunities. We connect businesses with the tools, networks, training, or developmental resources needed to take their businesses to the next level. We encourage innovation and sustainability in our business community and our services are free of charge and available to all businesses in our district.

Whanganui & Partners values collaboration and strong relationships with iwi, businesses, organisations, community groups, networks and people who share the objective of making Whanganui a great place to live, work, visit and do business. We often combine our expertise and resources on projects that benefit our economy and community.

Contact us at  
**info@whanganuiandpartners.nz**  
for more information.

179 St Hill Street, Whanganui  
Open Monday to Friday, 8.00am to 5.00pm

**info@whanganuiandpartners.nz**  
**discoverwhanganui.nz/business**  
06 349 3119



## Caring for animals great & small

60 Carlton Avenue, Wanganui

[www.vetsoncarlton.co.nz](http://www.vetsoncarlton.co.nz)

[office@vetsoncarlton.co.nz](mailto:office@vetsoncarlton.co.nz)

[facebook.com/VETS-on-Carlton](https://facebook.com/VETS-on-Carlton)

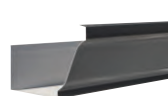


Phone: 06 345 5672

Appointment only:  
Monday-Friday 8am-6pm

**Rainaway**®  
SPOUTING ON THE SPOT

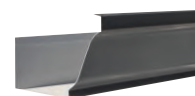
Renovating or thinking about rejuvenating your  
existing spouting, come and talk to us.



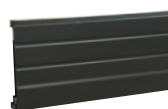
125 CLASSIC



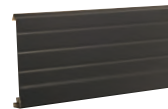
1/4 ROUND



150 CLASSIC



FASCIA 147



FASCIA 185

Continuous Spouting in three different  
profiles  
Traditional Spouting  
Traditional Box Gutter  
External Fascia & Spouting Systems in  
either Pre-Painted Steel or Timber  
Downpipes

- Rainwater Heads
- Gutter Guard
- Made to measure on-site.
- A range of profiles and 16 colours in colorcote steel, aluminium or copper.
- NZ's only compliant bracket.
- Written 10 years 'no leaks' guarantee.

Phone: 06 344 8304 or 0800 50 50 52

Email: [office@rainaway.co.nz](mailto:office@rainaway.co.nz)

23 Cooks Street, Whanganui

[www.rainaway.co.nz](http://www.rainaway.co.nz)





# LA STATION

• DESIGN STORE •

## La Station

Situated in the beautifully restored Old Central Fire Station is this wonderful store offering a wide range of unique and affordable Furniture and Homeware. It's a must visit ... [go to lastation.co.nz](http://go.to/lastation.co.nz)



## Station House

Whanganui's boutique Airbnb accommodation offers 3 stand-alone apartments all with secure gated parking. Station House 1 is a 2 bedroom, 1 bathroom with full kitchen, dinning and lounge situated upstairs in the Old Central Fire Station. Station House 2 is a 2 bedroom, 1.5 bathroom, full kitchen, dinning and lounge located next to the Fire Station. Finally there is the Station Penthouse which is a brand new 2 bedroom, 2 bathroom luxury apartment upstairs in the Old Fire Station. [Go to stationhouse.co.nz](http://Go.to/stationhouse.co.nz)



Station House 1



Station House 2



Station Penthouse



# Marae in Whanganui District









# Map Legend



## Cafés

- 1 The Burrow
- 2 Recaffeinate
- 3 Mud Ducks
- 4 Village Snob (coffee cart)
- 5 Article
- 6 Origins
- 7 Jolt
- 8 Frosty Moons (icecream parlour)
- 9 Sour Bros
- 10 Ambrosia Delicatessen
- 11 Orange
- 12 Honest Kitchen
- 13 Cactus Crème
- 14 Vietnam Kitchen
- 15 Mint Café & Restaurant
- 16 The Coffee Man (coffee cart)
- 17 Blend
- 18 Daily Grinds
- 19 141 Bakery & Coffee
- 20 Red Eye
- 21 Mischief on Guyton
- 22 Bus Café



## Restaurants & Bars

- 1 The Cobb & Speedway Garage
- 2 Lads Brewing Co.
- 3 The Burrow Cellars Wine Bar
- 4 Stellar Restaurant & Bar
- 5 Thai Villa
- 6 Vic Bar
- 7 La Quattro
- 8 Momiji Japanese Restaurant
- 9 High-Kut Bistro
- 10 Spice Guru
- 11 Porridge Watson
- 12 Teal Lounge
- 13 The Commercial Hotel
- 14 Rutland Arms
- 15 Frank Bar & Eatery
- 16 The Brick House
- 17 Japanese Kitchen WA
- 18 Maria Lane Eatery
- 19 Burger Cartel
- 20 The Grand Irish Bar
- 21 Shotz Bar
- 22 Tandoori Bite Indian Restaurant
- 23 Banh Mi Craft
- 24 Tasty Indian



## Galleries

- 1 Whanganui Arts Centre
- 2 Louise Herdman Mosaics
- 3 Renata's Art & Framing
- 4 Fine Arts Whanganui
- 5 Edith Gallery
- 6 Fleeting Fancy Gallery
- 7 Space Studio & Gallery
- 8 Magpie
- 9 Artso Studio & Gallery
- 10 Orphic Gallery
- 11 NZ Glassworks - Te Whare Tūhua o Te Ao
- 12 Brown & Co
- 13 Metal & Stone Jewellery
- 14 Quartz, Museum of Studio Ceramics
- 15 Sarjeant Gallery - Te Whare o Rehua Whanganui (opening August 2024)
- 16 Lockett Gallery
- 17 A Place For Hammers - Jewellery
- 18 Sue Cooke



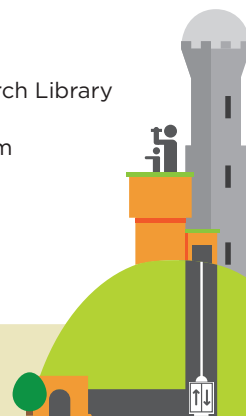
## Places of Interest

- 1 Durie Hill Tunnel, Elevator & Tower
- 2 Whanganui Riverboats
- 3 Riverboat Museum
- 4 Whanganui River Markets (Sat., 9am- 1pm)
- 5 Whanganui Tramways Museum
- 6 Royal Whanganui Opera House
- 7 Cooks Gardens Stadium & Velodrome
- 8 Musicians Club
- 9 War Memorial Centre
- 10 Davis Library - Te Whare Pukapuka o Whanganui
- 11 Alexander Heritage & Research Library - Te Rerenga Mai o Te Kāuru
- 12 Whanganui Regional Museum
- 13 Ward Observatory

**WHANGANUI**  
UNESCO City of Design



[discoverwhanganui.nz](https://discoverwhanganui.nz)







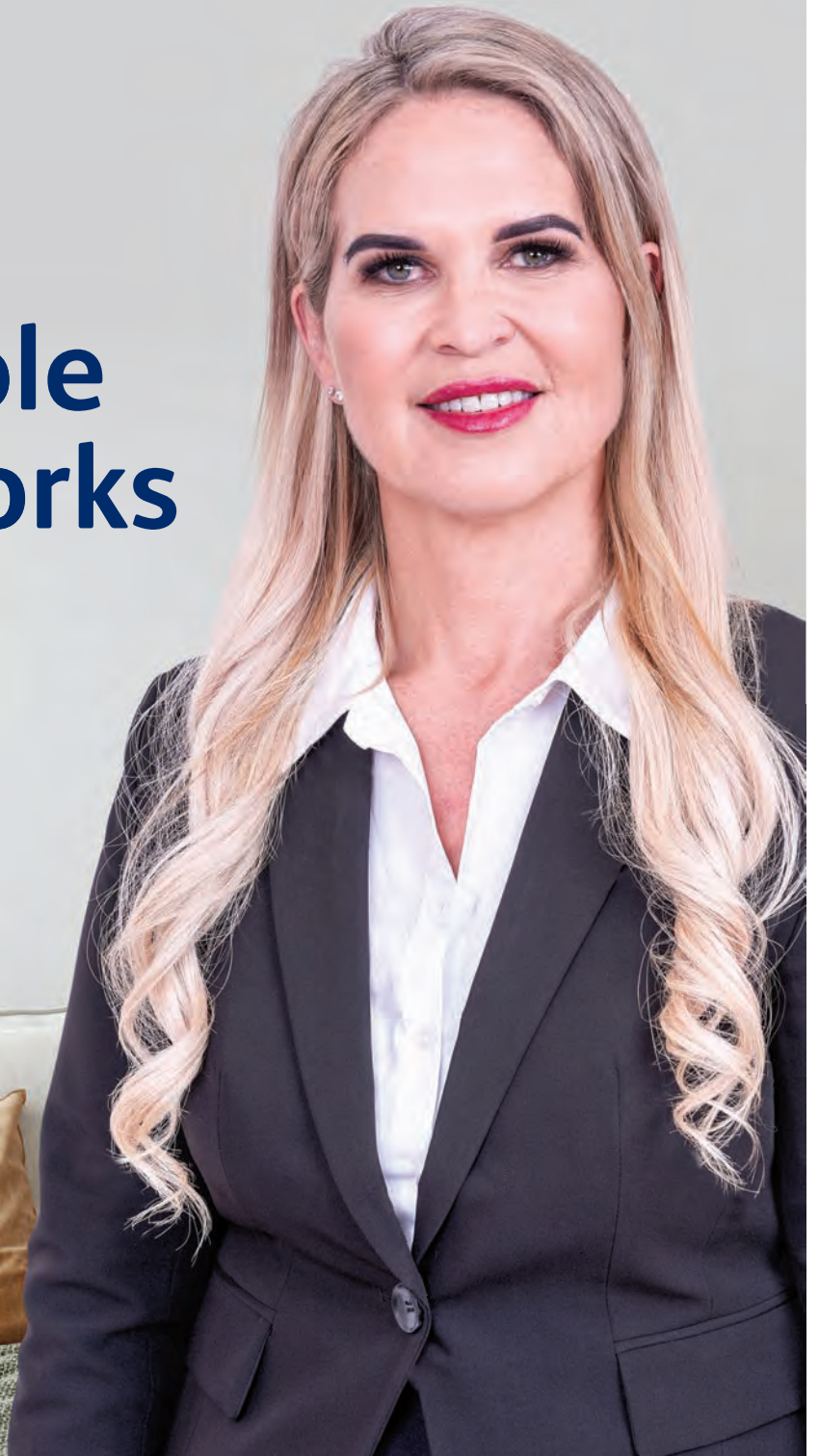
# Our whole team works for you

**Tracey Lethbridge**

**Residential/Lifestyle Sales**

**M** 027 266 5069

**E** [tracey.lethbridge@pb.co.nz](mailto:tracey.lethbridge@pb.co.nz)



Property Brokers Ltd Licensed REAA 2008 PB048926

**Property Brokers** <sup>B</sup>

[pb.co.nz](http://pb.co.nz)

Property Brokers Ltd Licensed REAA 2008





# WHANGANUI INTERMEDIATE SCHOOL *Ki Te Taumata*



“Inspiring and enabling every learner to have  
a successful, creative and confident future”.

There are times when big is better!

Four learning hubs, that can join together to form a large school, certainly has positives when it comes to putting teams together, and entering educational and supersport competitions.

Whanganui Intermediate has the results to prove it!

Gifted and Talented Education (GATE) @ WIS includes: Reading-Kids Lit Regional Champions every year for past 10 years, Writing - 5th place out of 4000 in 'Stylefit' National Writing Competition, Mathematics - Up to 10 teams each year in MATHEX, Engineering - Regional competitors for past 5+ years, Problem Solving- Otago University Prob-lem Challenge (runs all year), Culinary Arts - Cafe style creations, Visual Art - Printmaking, Pottery, Photography, Painting and more, Hard Materials - design and construct using hand and power tools, Performing Arts - Choir, Bands, Dance Troupes & Productions, and Sports - seasonal focus, Kapa Haka - Performance.

SuperSport Competition across regions - Whanganui/Manawatu/Horowhenua/Wairapa - with teams competing most weeks of the school year in: Athletics, Badminton, Basketball, Chess, Cricket, Football, Hockey, Ki-O-Rahi, Mountain Biking, Netball, Rugby, Swimming, Touch Rugby, Tryathlon, Volleyball.

Forest School is a class out in the forest and is attended twice a term by every class - that's 8 days a year of learning in nature.

For enrolments, our office  
hours are 10am - 1pm



MANAAKITANGA



AKO



WHANAUNGATANGA



# Whanganui Venues & Events

Within the heart of Whanganui you will find a unique range of venues – the Royal Whanganui Opera House, Whanganui War Memorial Centre, Majestic Square, Cooks Gardens Event Centre and the Cooks Gardens Velodrome.

The Whanganui Venues & Events expert team manages these iconic venues and bring some of Whanganui's biggest events to life, from live comedy or musical shows at the Opera House, to awards ceremonies at the War Memorial Centre, to international athletic and cycling events at Cooks Gardens, there's something for everyone. Head to the Venues & Events website to see what's happening:

**[whanganuivenues.co.nz/event-list](http://whanganuivenues.co.nz/event-list)**

With a dedicated team of event professionals, Whanganui Venues & Events can assist with occasions of all types including international shows, conferences, community festivals and smaller private events.

Whether it's 20 or 2000 guests, the team can offer you the perfect venue as well as services and expertise to help facilitate a world-class event right in the heart of the River City.

For booking enquiries, please call the Venues & Events team on 06 349 0513 or email [events@whanganui.govt.nz](mailto:events@whanganui.govt.nz)

For more information, visit:  
**[whanganuivenues.co.nz](http://whanganuivenues.co.nz)**



## ESSENCE CATERING

BY YW HOSPITALITY LTD

**[www.essence-catering.co.nz](http://www.essence-catering.co.nz)**

Aramoho Shopping Centre  
143 Somme Parade, Whanganui  
Phone: 06-343 9016  
Email: [info@essence-catering.co.nz](mailto:info@essence-catering.co.nz)



**New eBikes In stock and also eBikes available to hire!**

Stockists of:



73 Putiki Drive, Wanganui | **06 348 8008**

[www.ebikeswanganui.co.nz](http://www.ebikeswanganui.co.nz) | [info@ebikeswanganui.co.nz](mailto:info@ebikeswanganui.co.nz)



# Civil Defence

Civil Defence and Emergency Management in Whanganui is led by Whanganui District Council. In large emergency events, Civil Defence co-ordinates a wide range of groups and agencies including police, Fire and Emergency New Zealand, ambulance and other services to:

- help prevent loss of life
- help the injured and relieve distress
- help the community return to normal.

In an emergency, everyone needs to be self-reliant and prepared to survive in their own home for at least three days without assistance. What you do to prepare can make a huge difference to the way you and your family cope, and helps emergency services focus on helping those directly impacted

An emergency could occur at any time in our district. Possible emergencies include:

- floods
- severe weather events
- hazardous chemical spills (industrial/transport accident)
- loss of water or power supply
- earthquakes
- volcanic eruptions or ash fall
- tsunami
- pandemics.

In the case of an emergency, Civil Defence centres may be opened if there is a need and resources are



Putiki tamariki practise a tsunami hiko

available. It's helpful to know where your nearest Civil Defence centre is so visit: [whanganui.govt.nz/civil-defence-centres](http://whanganui.govt.nz/civil-defence-centres) for Google Maps links. In an emergency, these centres are the base for trained volunteers who provide help, advice and guidance for evacuees or impacted members of the public.

## How to prepare

Basic supplies to have at home:

- Water for three days or more – nine litres for every person, plus pets
- Long-lasting food that doesn't need cooking (unless you have a camping stove or barbecue) and food for babies and pets
- Toilet paper and large plastic buckets for emergency toilets
- Work gloves and a properly-fitted P2 or N95 mask.

To make an emergency plan for your household, work, school, marae or more, visit [getready.govt.nz/en/prepared/household/make-a-plan/](http://getready.govt.nz/en/prepared/household/make-a-plan/)

## Where to go for information

Follow these social media channels for up-to-date information from the Civil Defence team: [facebook.com/civildefencemanawatuwhanganui](https://facebook.com/civildefencemanawatuwhanganui)  
[facebook.com/whanganuidistrictcouncil](https://facebook.com/whanganuidistrictcouncil)

## Brian FM

Whanganui District Council works with Brian FM to ensure essential public information is broadcast immediately from the Emergency Operations Centre during emergencies.

Listen to the frequencies below, or online at [brianfm.com](http://brianfm.com)

- **Brian FM Whanganui**  
– 91.2FM
- **Brian FM Taihape and Waiouru**  
– 93.2FM
- **Brian FM Mt Ruapehu**  
– 90.2FM
- **Reelworld Radio Whanganui**  
– 92.0FM
- **Reelworld Radio Mt Ruapehu**  
– 104.6FM

# Welcome

## Carl Bates MP for Whanganui

200B Victoria Avenue, Whanganui  
[carlbatesmp@parliament.govt.nz](mailto:carlbatesmp@parliament.govt.nz)  
**Whanganui** 06 348 1029 **Hawera** 06 278 2180  
f [CarlBatesWhanganui](https://facebook.com/CarlBatesWhanganui) @ [carlbates](https://twitter.com/carlbates)

Funded by the Parliamentary Service. Authorised by Carl Bates, Parliament Buildings, Wellington.





Make sure you have a battery-powered radio and batteries in your emergency supplies. Messages won't be up immediately after an event such as an earthquake, but will be broadcast every 30 minutes or as soon as possible.

#### Other radio stations for emergency information:

**More FM 92.8FM**

**Magic 90.4FM**

**The Hits 89.6FM**

**Awa FM Whanganui 100FM**

**Awa FM Ohakune and Raetihi 93.5FM**

**NewstalkZB 1197AM**

#### Other useful websites:

Get Ready: [getready.govt.nz](http://getready.govt.nz)

Earthquake Commission:

[eqc.govt.nz](http://eqc.govt.nz)

Geonet: [geonet.org.nz](http://geonet.org.nz)

#### Emergency mobile alert

In an emergency, Emergency Mobile Alert messages can be sent to some smartphones by the Ministry of Civil Defence & Emergency Management, Civil Defence Emergency Management Groups, New Zealand Police, Fire and Emergency New Zealand, the Ministry

of Health and the Ministry for Primary Industries.

These messages will be sent if life, health or property is in serious danger. If your phone is capable of receiving Emergency Mobile Alerts, they should appear automatically with a unique and penetrating warning sound. The Emergency Mobile Alert does not replace other information about what to do during an emergency – check out Whanganui District Council and Manawatū-Whanganui Civil Defence Facebook pages and make sure you have a battery or solar powered radio.

For more information about the Emergency Mobile Alert and to check if your phone is capable of receiving it, visit: [getready.govt.nz](http://getready.govt.nz)

#### Civil Defence sirens

Electronic warning sirens are stationed along the lower Whanganui River estuary and the Castlecliff coastline, with a separate siren at Mowhanau. These are primarily to warn of a possible tsunami impact in the Whanganui area.

Visit: [whanganui.govt.nz/civil-defence](http://whanganui.govt.nz/civil-defence) and look through the tsunami section to listen to the tsunami siren sound.

Civil Defence sirens are tested on the first Wednesday of each month at 8.30am (except January). If you hear a continuous siren, please tune in to your nearest radio station and listen for information.

#### Tsunami evacuation maps

There are several tsunami information boards and evacuation maps throughout the Whanganui District at coastal or river areas, telling people what to do if a tsunami is generated near our coastline.

A detailed digital map of tsunami evacuation areas, evacuation routes and safe zones is available at: [whanganui.govt.nz/tsunami-evacuation-map](http://whanganui.govt.nz/tsunami-evacuation-map)

If you experience a strong earthquake that is hard to stand up in, a weak rolling quake that lasts a minute or more, or loud and unusual noises from the sea, move to higher ground as far inland as possible. Don't wait for an official warning.



**CONCEPT**  
TILE COLLECTIVE

[concept-tile.co.nz](http://concept-tile.co.nz) | 78 Wilson St, Wanganui | 06 345-0030

*Visit our modern, boutique-styled showroom and experienced tile suppliers for an extensive tile selection and in-house design advice.*



# Recycling and rubbish collection

## Urban rubbish collection

The council does not provide a kerbside rubbish collection service for Whanganui households in urban areas. If you're seeking a kerbside rubbish collection service, you can choose from three waste collection companies in Whanganui: EnviroWaste, Low Cost Bins and Waste Management.

**EnviroWaste**, based at 27 Gilberd Street, offers a wheelie bin-only service. For more information call 06 344 4201 or visit: [environz.co.nz](http://environz.co.nz)

**Low Cost Bins** offers both a rubbish bag and wheelie bin collection service. Visit: [lowcostbins.co.nz](http://lowcostbins.co.nz) to find out about buying rubbish bag stickers or ordering a wheelie bin.

**Waste Management**, based at 14 Liffiton Street, offers a wheelie bin collection service. They can be contacted on 06 348 8009 or online: [wastemanagement.co.nz](http://wastemanagement.co.nz)

Wheelie bins of varying sizes, with a range of options for collection frequency, are available from the waste collection companies above.

## Putting out the rubbish

Rubbish bags and wheelie bins need to be placed on the kerbside no later than 7.00am on the day of collection to ensure they will be collected.

Rubbish bags need to have a pre-paid sticker attached (available from your local dairy, supermarkets and a variety of other stores).



Rubbish is collected between 7.00am and 4.30pm. Rubbish bags that do not meet the conditions outlined on the sticker will not be collected.

Missed bags should be placed back on the kerbside by 7.00am on the morning of the next collection.

Any problems with these services should be raised directly with the waste company concerned.

For a map of rubbish collection days for your area, visit: [whanganui.govt.nz/rubbish-recycling](http://whanganui.govt.nz/rubbish-recycling)

Domestic rubbish bags can also be dropped off at the Whanganui

Resource Recovery Centre at 81 Maria Place, for a fee.

Visit: [wrrc.co.nz](http://wrrc.co.nz) for information on current fees.

## Rural rubbish collection

For residents in remote rural areas, Whanganui District Council has bins at designated collection points for bags of household waste.

Rural properties close to the city boundaries use privately-owned companies for kerbside rubbish collection. There are three kerbside rubbish collection companies: EnviroWaste, Low Cost Bins and Waste



**Cornstruct is a small, locally owned and operated building company**

Our team specialize in light commercial, new residential construction and any building requirements you may need

Locally owned and operated since 2017

**CORNSTRUCT**  
Building Solutions

Contact us for a quote: [joel@cornstruct.co.nz](mailto:joel@cornstruct.co.nz)  
[www.cornstruct.co.nz](http://www.cornstruct.co.nz)



Management who all offer a wheelie bin collection service.

Low Cost Bins also offer a rubbish bag collection service provided bags have the correct sticker attached. Stickers can be bought at most supermarkets and dairies around town. For those outside the kerbside collection routes, rubbish bags with correct stickers can be dropped off at the designated peri-urban bag drop-off sites.

Bags must be placed on the kerbside or collection point – whichever is designated for your area – no later than 7.00am on the day of collection.

For more information about rural rubbish collection, including a map, visit: [whanganui.govt.nz/rural-rubbish](https://whanganui.govt.nz/rural-rubbish)

### Green waste

You can take green waste to the Whanganui Resource Recovery Centre at 81 Maria Place or Waste Management's Midtown Transfer Station at 14 Liffiton Street. Charges apply.

For information on the Whanganui Resource Recovery Centre's hours and fees, visit: [wrrc.co.nz](https://wrrc.co.nz) or call 06 348 7950.

For information on Midtown Transfer Station's hours and fees, call 0800 10 10 10.

### Food waste

Easy Earth is a local business that provides a food waste collection service for households, businesses and organisations. Their aim is to divert food waste from landfill and turn it into high-quality compost using a state-of-the-art HotRot composter.

For \$6 per week Easy Earth supplies households with a 10-litre bin for food waste that is collected weekly from the home.

Households also have the option of dropping off food waste at an Easy Earth collection point for \$3.50 per drop-off.

Businesses and organisations can choose for Easy Earth to collect just food waste (starting from \$9 per week) or both food waste and recycling (starting from \$15 per week).

For more information, check out: [easyearth.co.nz](https://easyearth.co.nz)

**Note: From July 2025, the council will be introducing a rates-funded**

**kerbside food scraps collection for all urban residential households. Details of the service, including delivery of bins to households, will be provided in the months leading up to July 2025.**

### Recycling

The Whanganui Resource Recovery Centre at 81 Maria Place is a one-stop shop for resource recovery and waste minimisation in the Whanganui district. It provides a 24/7/365 facility for dropping off glass, plastics 1, 2 and 5, cans, clothing, paper and cardboard.

During normal business hours customers can also bring in tyres, waste oil, e-waste, domestic batteries, fluorescent tubes, eco bulbs, car seats, whiteware and green waste.

There are charges for these extra items.

For information on opening hours please contact the Whanganui Resource Recovery Centre by calling 06 348 7950, emailing [office@wrrc.co.nz](mailto:office@wrrc.co.nz) or visiting: [wrrc.co.nz](https://wrrc.co.nz)

If you're not sure whether an item can be recycled, check out the ReSource Whanganui website for up-to-the-

# LOWCOSTBINS

## Proud to serve the residents of Whanganui





minute advice. It's a quick and easy way to access information on the best way to reduce, repurpose and recycle items: [resourcewhanganui.org.nz](http://resourcewhanganui.org.nz)

### Kerbside recycling service coming in July 2024

Whanganui District Council is introducing a rates-funded kerbside recycling service for all urban households (and some larger rural communities) in July 2024.

Research shows with a kerbside recycling service, more people get involved because it's easier and more convenient. It will also mean we can significantly reduce the amount of waste Whanganui is sending to landfill.

Three recycling crates will be provided for the kerbside recycling service to collect paper, cardboard, plastics 1, 2 and 5, tins, glass bottles and jars.

**Details, including delivery of bins to households, will be provided in the months leading up to this new service.**

### Upcycling and repurposing

The Whanganui Environment Base (WhEB), located at the Whanganui Resource Recovery Centre at 81 Maria Place, is the home of the Sustainable Whanganui Trust.

The WhEB is open five days a week (Monday to Friday from 10.00am to 4.00pm).

Used toothbrushes (manual only) and toothpaste tubes can be dropped into the Colgate Oral Care Brigade bin outside the WhEB. If you're interested in improving your garden, you can buy

worm farms, tiger worms and worm wees from the WhEB.

If you've never before visited the WhEB, do ask for a tour. All age groups are catered for.

For further tips and opportunities on how to limit, upcycle or repurpose materials, check out the Resource A to Z guide at: [resourcewhanganui.org.nz](http://resourcewhanganui.org.nz)

### Re-Use Academy (RUA)

RUA is operated by the Whanganui Sustainability Trust and located at the Resource Recovery Centre at 81 Maria Place (next to the Whanganui Fire Station)

A wide variety of items can be dropped off at the Re-Use Academy for others to reuse or repurpose for arts and crafts or educational projects.

All items can be collected from the Re-Use Academy for a donation. Please give generously, to enable environmental projects to be undertaken in the community.

WhEBsters are always interested in small glass jars, bottles with lids, plastic bottle tops, other reusable plastics, craft materials, wool (including unfinished knitting projects), old cards and calendars, wallpaper, wrapping paper, posters, cardboard cartons, tubes, egg cartons and trays, plant pots, stakes and punnets, and fabrics and textiles.

Please make sure any items you drop off are clean.

### Green Bikes

Green Bikes (Pahikara Matomato) operates out of premises behind

the WhEB office on Tuesdays from 1.00pm until 5.00pm. Old bikes and parts, including tyres, can be dropped off any time. These are recycled into roadworthy bikes by a small group of volunteers. The bikes are sold for a nominal price to children, pensioners and beneficiaries. The Green Bikes volunteers also repair bikes for those on low incomes.

### Harakeke Room

The Whanganui Resource Recovery Centre's education room is called the Harakeke Room. Practical sustainability courses are offered on demand. School holiday repurposing workshops are held for children with their caregivers.

### Eco Library

For a one-off \$5 subscription, you can borrow books and magazines for a month from the WhEB's extensive sustainability library.

### Volunteers

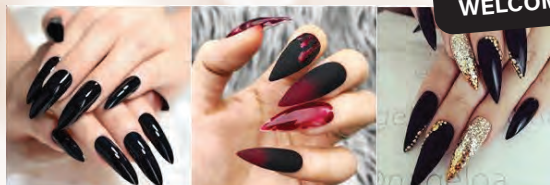
Volunteers are needed for various on-site projects as well as the Fruit Trees in Schools and Fruit Trees in the Community initiatives. These provide an opportunity to work alongside experienced volunteers and learn more about sustainability. Training is given.

For more information about Sustainable Whanganui, call 06 345 6000, email [sustainablewhanganui@gmail.com](mailto:sustainablewhanganui@gmail.com), visit: [sustainablewhanganui.org.nz](http://sustainablewhanganui.org.nz) or find them at [facebook.com/SustainableWhanganui](https://facebook.com/SustainableWhanganui)

## WANGANUI LUXURY NAIL

Come - Relax - Enjoy

WALK-INS WELCOME



● ACRYLIC NAILS ● POWDER GEL NAILS ● MANICURE  
● SPA PEDICURE ● ACRYLIC INFILL ● SHELLAC, GELISH, GEL POLISH ● SNS DIPPING SYSTEM ● EYELASH EXTENSIONS

73 Victoria Avenue Wanganui  
Phone (06) 345 6868  
[WanganuiLuxuryNail/facebook.com](https://www.facebook.com/WanganuiLuxuryNail/)

## WHAT RENOVATES WITH YOU?

Outdoor Spaces, Home Re-Model, or New Kitchen?  
Be summer ready with Smith & Sons Today!



LOCAL RENOVATION & EXTENSION SPECIALISTS

Free consult and quote | Project Management | Quality Build

0800 764 846  
[www.smithandsons.co.nz](http://www.smithandsons.co.nz)

**Smith & Sons**  
RENOVATIONS & EXTENSIONS





## Shared pathways and transport

The Whanganui district is recognised for its excellent cycling terrain, national accessibility and temperate climate, and Whanganui city is home to mountain bike parks and an inner-city bike park.

Whanganui District Council is creating a growing and well-connected network system of cycle lanes and shared pathways.

A shared pathway is a route designated for shared use by people who are cycling, scootering, skating or walking. Shared pathways encourage active travel and provide easy, direct connections between various parts of

the city – from the river, to the town centre and to the suburbs.

For a map displaying Whanganui's shared pathway network, visit: [whanganui.govt.nz/shared-pathways-map](http://whanganui.govt.nz/shared-pathways-map)

Most of the shared pathways funding comes from Waka Kotahi NZ Transport Agency's Urban Cycleways Fund and central government's National Land Transport Fund. The council provides the remainder.

The council-led Mā Ake Let's Go programme offers cycle skills education programmes (BikeReady)

in school-based settings as well as tailored programmes for adults. Visit Let's Go Whanganui page at: [facebook.com/LetsGoWhanganui](https://facebook.com/LetsGoWhanganui) to find out more about active transport in our community.

### Whanganui Airport

First established in the 1930s, Whanganui Airport provides air links and support for businesses, tourists and private pilots in the wider Whanganui region.

The airport is also the primary base for the New Zealand International



## COMMERCIAL AND RESIDENTIAL WINDOWS AND DOORS

If you're building or renovating, and would like to discuss your window and door options, or request a free quote, talk to Creative Aluminium on 0800 000 677 or email [admin@creativealuminium.co.nz](mailto:admin@creativealuminium.co.nz).

\*Credit criteria applies  
[creativealuminium.co.nz](http://creativealuminium.co.nz)

**fairview**  
EXCEPTIONAL WINDOWS & DOORS



**Creative Aluminium**

200 Taupo Quay, Wanganui 4500

P: 06 344 6777 • W: [www.creativealuminium.co.nz](http://www.creativealuminium.co.nz)



Commercial Pilot Academy and home to the Whanganui Aero Club.

Air Chathams offers regular commercial flights between Whanganui and Auckland – for more information and to book flights, call 0800 580 127 or visit:

**[airchathams.co.nz](http://airchathams.co.nz)**

For travellers and visitors to the airport, JARS Cafe has a range of light meals, snacks and drinks available.

Free parking at the airport is available for up to 60 minutes next to the terminal building. The long-term car park is fully fenced and is secured and alarmed in the evening after the last flight and then reopened before the first flight in the morning.

For more information about airport facilities and links to airport tenants, visit: **[whanganuiairport.co.nz](http://whanganuiairport.co.nz)**

### Buses

Buses operate regularly throughout urban Whanganui. Timetables for all routes are available from: **[horizons.govt.nz/buses-transport](http://horizons.govt.nz/buses-transport)** and the Whanganui isite Visitor Information Centre at 31 Taupo Quay. Te Ngaru The Tide is a high-frequency service running every 20 minutes between

Castlecliff and Aramoho, connecting a range of destinations – including Gonville, Whanganui Hospital, the city and upper Victoria Avenue shops. There is also a week-day commuter service between Whanganui and Palmerston North.

InterCity operates daily buses to Whanganui from a variety of towns and cities across the North Island. The InterCity bus stop in Whanganui is at 29 Taupo Quay, outside The Tram Shed. For more details including bus travel times and booking information, drop in to the nearby Whanganui isite Visitor Information Centre at 31 Taupo Quay – the isite is also an InterCity booking agent. To arrange your bus travel online, visit: **[intercity.co.nz](http://intercity.co.nz)**

### Taxi services

All taxis in New Zealand must be registered with a taxi company. River City Cabs offers taxi services in Whanganui on a 24/7 basis. Taxis can be ordered by calling 0800 345 3333, visiting: **[rivercitycabs.co.nz](http://rivercitycabs.co.nz)** or hailed at taxi stands

### Driving in New Zealand

You must have a valid driver's licence to drive in New Zealand. If you have

a valid or current overseas driver's licence or international driving permit, you can drive using this permit for a maximum of 12 months from the date you arrive in New Zealand. For more information about driver licensing, contact Waka Kotahi NZ Transport Agency at: [nzta.govt.nz](http://nzta.govt.nz) or call 0800 822 422.

For the latest highway information, call Waka Kotahi on 0800 4 HIGHWAYS (0800 44 44 49).

### Tips for driving in New Zealand:

- Drive on the left-hand side of the road
- You must carry your driver's licence at all times when driving. If your licence is not in English, you need to carry an accurate translation
- Everyone in a motor vehicle must wear a seatbelt
- Children under 7 must be restrained in an approved car seat
- Never drink and drive – for drivers under 20 a zero-alcohol level applies
- It is illegal to use your phone while driving
- To be safe when parking, always lock your car.

# Our whole team works for you



When we shake  
your hand, we  
mean it

We help and  
value our clients  
and each other

We do the little  
things that make  
a difference

We are passionate  
about our communities  
and want to see  
them thrive

Contact us today **06 345 7714**

**[pb.co.nz](http://pb.co.nz)**

Property Brokers Ltd Licensed REAA 2008  
PB061691

**Property  
Brokers**



# WORK HARD. PAY HARD.

OPPORTUNITIES TO EARN  
OVER \$1,200 A WEEK.



[AFFCO.CO.NZ](http://AFFCO.CO.NZ)

## JOIN OUR TEAM THIS SEASON

Our team is looking for new players who want good workmates, good perks and good pay. You don't need any experience, we'll coach you in any position, including knife hands, stock handlers, forklift drivers, butchers, packers, and strappers.

Along with good pay you'll get opportunities to move up, wholesale priced groceries, sweet retail discounts and various shifts to choose from. It really is a job with the works.

It's a win-win when you join us.

**Apply now.**

Visit us at AFFCO Imlay, Imlay Place, Whanganui,  
apply online at [AFFCO.co.nz](http://AFFCO.co.nz) or call us on 06 349 2400.



[AFFCO.CO.NZ](http://AFFCO.CO.NZ)



# The Heart of every home

The finest  
comfort and  
luxury in  
**BEDDING &  
FURNITURE**

**Sleepyhead**

  
designmobilier™

L A Z B O Y™

Coastwood  
FURNITURE



The biggest  
brands in  
**COOKING  
INSPIRATION**

 Westinghouse

*Fisher & Paykel*

**beko**

 **BOSCH**

**Haier**

 **Electrolux**



The complete  
cinema  
experience in  
**AUDIO –  
VISUAL**

**Panasonic**

**SAMSUNG**

 **LG**

 **YAMAHA**

**TCL**  
The Creative Life

**SANGEAN**

**JBL**

**LET US HELP YOU MAKE YOUR HOUSE A HOME TODAY!**

**Beds.R.us**  
**100** 



**Dimocks  
Homestore**

190 VICTORIA AVE,  
WANGANUI

PH 06 348 4877  
**OPEN 7 DAYS**



# Animal management

Whanganui District Council's friendly animal management team encourages care and control of animals in the Whanganui district.

Animal management issues dog registrations, provides advice about the housing and welfare of animals, responds to calls about wandering stock, patrols suburban streets, maintains the council's animal pound and deals with incidents involving aggressive dogs.

The council also has an animal management education officer who takes a preventative approach to community safety by educating people about caring for animals and interacting with them safely.

Anyone wishing to gain responsible dog-owner status must attend an approved training course on responsible dog ownership (this status also entitles you to a discount on your annual dog registration fee). For more information visit: [whanganui.govt.nz/responsible-dog-owner](https://whanganui.govt.nz/responsible-dog-owner)

The courses are free to attend and apply to dog owners who:

- are registering a dog with Whanganui District Council for the first time
- have a dog currently registered with the council but do not meet the responsible dog owner criteria.

The council's Dog Control Bylaw 2021 was introduced to reflect community feedback about the management of dogs in the district. It aims to improve community safety by improving and encouraging the responsible ownership of dogs in Whanganui.

The Keeping of Animals, Poultry and Bees Bylaw 2020 regulates the control of animals other than dogs. The purpose of this bylaw is to protect the public from nuisance, to maintain and promote public health and safety, and to protect the welfare of animals. For more information about this bylaw visit: [whanganui.govt.nz/animals-bylaw-2020](https://whanganui.govt.nz/animals-bylaw-2020)

## Dog registration

Dog registration fees help fund a range of services that are designed to help dogs, their owners and the wider community. There is a small ratepayer contribution per year towards the cost of animal management services

for stock control on district roads and highways, and to recognise public good and education.

You need to register your dog:

- when it turns three-months-old
- or when you first get him/her
- and thereafter on 1 July of each year.

All dogs must also be microchipped once they reach three months of age. The council has a graded registration fee structure that recognises responsible dog ownership, neutered dogs and prompt payment. For any dog turning three months of age during the year a part-fee will be paid based on the number of complete months remaining in the registration year.

If you have moved to the Whanganui district with your registered dog or dogs, you will not need to pay your registration until 1 July 2024. However, please let the council know of your animal's arrival as soon as practically possible so registration can be transferred from your previous authority.

For current fees and discounts visit: [whanganui.govt.nz/dog-registration-fees](https://whanganui.govt.nz/dog-registration-fees)

The registration year is the period of 12 months from 1 July to 30 June of the following year. You can pay your yearly registration via credit or debit card online at: [eservices.whanganui.govt.nz](https://eservices.whanganui.govt.nz) - if your registration tag is lost or damaged, a replacement tag can be obtained free of charge.

## Late penalty fees

A late penalty fee - 20% of the fee as if your dog had been registered on the first day of the registration year - will be applied after 31 August each year.

## Animal pound

The council's animal pound facility at 7 Airport Road is open by appointment only from Monday to Friday, 11.00am until 1.00pm. If your dog is missing, please call the council on 06 349 0001 at any time, 24/7 - also look on the council's Adopt a Dog Facebook page at: [facebook.com/Whanganuipooches](https://facebook.com/Whanganuipooches)

If your dog is listed on the council's Adopt a Dog page, call the council on 06 349 0001. Unknown dogs picked up by animal management officers are usually listed here - if not, please still call the council.

To book an appointment to visit the animal pound visit: [whanganui.govt.nz/pound-appointment](https://whanganui.govt.nz/pound-appointment)

As well as 48 animal welfare-compliant dog kennels, the animal pound has a dedicated education room for in-person and video presentations to the community on responsible dog ownership. Services such as rehoming, microchipping, registration and temporary housing are also available through the pound.

## Dog exercise areas

Under the Dog Control Bylaw, dogs must be on a leash at all times in public places except in designated off-leash areas. We provide a range of dog exercise areas where dogs are able to be unleashed. There are also public areas around the district where dogs are permitted on leashes, while in some areas dogs are prohibited.

The dog exercise areas are signposted and most contain doggy-doo bins.

Dog owners are reminded of their responsibility to "scoop the poop" and keep public areas clean and pleasant to walk and exercise in.

For a full listing of leashed and unleashed dog exercise areas visit: [whanganui.govt.nz/dog-exercise-areas](https://whanganui.govt.nz/dog-exercise-areas)





# Wanganui Veterinary Services

Wanganui Veterinary Services is the complete mixed veterinary practice, with a dedicated team of vets and support staff, passionate about applying their skills to assisting all animals, and promoting animal health and production in the Whanganui region. The practice was one of the very first in New Zealand to gain Best Practice accreditation and we are always looking to further improve our services.

Having originated as The Wanganui Veterinary Club in 1945, whereby clubs were formed to bring veterinarians to the provinces and rural areas, the practice has developed into a multi-faceted clinic. Nowadays operating as Wanganui Veterinary Services from 35 Somme Parade, in conjunction with Vets on Carlton at 60 Carlton Avenue, Wanganui Veterinary Services has 10 veterinarians employed to meet the demands of both the Wanganui urban and rural markets. In addition, the two vet clinics combine together to provide the only 24/7, Wanganui based, after hours service.

Large animal work is provided to the greater Whanganui region and is mostly based around sheep, beef, dairy and equine work, but the large animal team of four vets, a technician

and a sales manager, have wide and varied experience which is of great benefit when dealing with the types of animals that are encountered on these farms, and also the growing number of lifestyle blocks. Contracting and consultancy are available to farmers, including the sheep conveyor and calf debudding services.

A full range of companion animal services are provided including vaccinations, x-ray diagnoses, orthopaedics, pregnancy scanning, dental work, flea and worm control, weight management programmes, pet export certification and much more. All routine surgery is performed as well as full surgical management for conditions such as twisted stomachs, bladder stones, fractures, ligament damage, lump removal and caesareans. With over 50 cages and a separate isolation ward the clinic has the capacity to cater for the fluctuations of companion animal veterinary demands.

Adjoined to the clinic is Pet Essentials, a standalone shop that stocks everything your pet could desire.

There is a wide range of cat and dog food, including the preservative free meat selection and locally made dog rolls, tropical and freshwater fish,

leads, beds, doggy coats, kennels, giftware and so much more.

The practice also operates Vetcare Grazing which has over 10,000 heifers under management. With over 25 years of experience, the Vetcare brand offers consistently top weight gain results, veterinary monitoring, regular reporting, animal health insurance, long-term clients and top graziers on very good land.

To add to the offering Wanganui Farm Supplies is also part of the business, fitting in alongside the veterinary practices to provide for the needs of either farmers, weekend farmers or townies who are looking for the ultimate stock and station retail experience. Boasting a wide range of products, the largest under cover drive through in town, equine products galore, apiarist supplies including bulk sugar syrup, and a friendly team of staff, Wanganui Farm Supplies is the place to go.

With a total staff of over 60, a commitment to Wanganui through numerous sponsorships and the different businesses it operates Wanganui Veterinary Services is truly a homegrown business dedicated to the Wanganui area and its local community.



## WANGANUI VETERINARY SERVICES

- Large and Small Animal Clinical Work
- Pet Grooming
- Pet Essentials
- Lifestyle Farmers Club
- Equine Care
- Farm Consultancy and Contracting
- Vetcare Bull Hire
- Vetcare Grazing



35 Somme Parade, Wanganui  
Mon-Fri 8.00am-6.00pm, Sat 9.00am-12pm

06 349 0155

24/7 0800PETVET / 0800 738 838 • www.wgvets.co.nz



*Caring for animals great and small*



Appointment only  
Monday-Friday 8am-6pm

60 Carlton Avenue, Wanganui  
www.vetsoncarlton.co.nz  
Phone: 06 345 5672

• Dr Peter Scott BVSc • Dr Erin Carver BVSc

**PET** essentials

*'It's Where Your Pets Would Shop'*

• GREAT PARKING • GREAT ADVICE - FROM YOUR LOCAL PET SUPPLIER

35 Somme Parade, Wanganui. Ph (06) 349 0488  
Hours: Monday - Friday 8am - 6pm, Saturday 9am - 4pm

**Wanganui's locally owned pet supply store**

...for pets & pet lovers

**VET NURSE IN STORE**



**WANGANUI FARM SUPPLIES**

**WE ARE YOUR ONE-STOP SHOP**

5-9 Church Place, Wanganui

Ph: 06 345 4663

Scott: 027 233 4875

www.wanganuifarmsupplies.co.nz





# ALTOGETHER

## YOUR PROPERTY MANAGEMENT EXPERTS

**For all things rentals, talk to our award winning property management team**

Whether you're looking to rent a property, wanting a rental appraisal or needing property management services for your investment property - reach out to Bayleys Whanganui. Our fully accredited and experienced team pride themselves on personalised service, excellent communication and looking after both our landlords and tenants.

**Call us today!**

158 Wicksteed Street, Whanganui  
06 348 0573 | [rentals@bayleyswg.co.nz](mailto:rentals@bayleyswg.co.nz) | [bayleys.co.nz/whanganui](http://bayleys.co.nz/whanganui)  
BARTLEY REAL ESTATE LTD, BAYLEYS, LICENSED UNDER THE REA ACT 2008



**ALTOGETHER BETTER**

Residential / Commercial / Rural / Property Services



**Need help with transforming conflict in  
your workplace?**

**Want to create a healthy, thriving  
community and workplace?**

A restorative approach is an evidence based, problem solving way to build and strengthen healthy relationships and also transform conflict.

This process empowers the people involved to address the conflict/bullying behaviour together, take accountability, repair the harm and create solutions for sustained behaviour change.

**Restorative City Whanganui  
provides:**

- Restoring team relationships
- Training • Partnering/mentoring
- Facilitation at reasonable rates
- Restorative Justice service



**Restorative City Whanganui**

Incorporating Restorative Practices  
Whanganui and Whanganui | Restorative Justice  
Phone 06 343 3645 | PO Box 4285, Whanganui 4541  
[www.restorativepracticeswhanganui.co.nz](http://www.restorativepracticeswhanganui.co.nz)  
[www.restorativejusticewhanganui.co.nz](http://www.restorativejusticewhanganui.co.nz)



**TOTAL MOBILITY VANS  
LUGGAGE TRAILERS • VANS  
SEDANS • CAR SEATS**

**EFTPOS  
AVAILABLE**



**PHONE: 0800 345 333**



**Full Breakfast  
& Lunch Menu**

**CABINET FOOD & FAIR TRADE KARAMU COFFEE**



**mischief  
CAFE**

**OPEN 7.30AM MONDAY - FRIDAY**

**96 Guyton Street | 06 347 1227**



**terry lobb**

**interior design**

**Are you looking to  
freshen up your home  
or needing a total revamp?  
Perhaps I can help**

- \* Interior and exterior colour schemes
- \* Complete interior design
- \* Supplier of wallpaper and fabrics
- \* Supplier of furniture
- \* Kitchen, bathroom and laundry design
- \* Renovations, new builds, light commercial
- \* Decluttering
- \* Sensory Spaces



**Contact: 027 602 3298**

**[terry@terrylobb.com](mailto:terry@terrylobb.com)**

**[www.terrylobb.com](http://www.terrylobb.com)**



# Rates

Rates are the main way the council funds activities and services for the community.

Each household is rated according to the value of their property. This means we all pitch in to pay for water services, road maintenance, animal management, swimming pools, libraries, parks, sportsgrounds and much more.

In Whanganui we also have a number of unique assets to maintain through rates including Rotokawau Virginia Lake, Bason Botanic Gardens, Cooks Gardens Stadium and Events Centre, Whanganui War Memorial Centre, the Durie Hill elevator, the Sarjeant Gallery Te Whare o Rehua, the Royal Whanganui Opera House, NZ Glassworks Te Whare Tūhua o Te Ao, the Whanganui Regional Museum and the Splash Centre.

The amount of rates the council collects each year is determined through the Long-Term Plan and the Annual Plan processes.

These plans establish the council's work programme, including the cost of maintaining council assets. The cost of delivering this work programme

will determine the amount of rates the council needs to collect.

The council engages with the community throughout this process.

Whanganui District Council rates are payable in four equal instalments for the financial year which runs from 1 July to 30 June each year.

We can set up direct debits on a weekly, fortnightly, monthly, quarterly or yearly basis. Please contact council customer services on 06 349 0001 for more information.

You can also find information about how rates are set and collected, and all payment options, at: [whanganui.govt.nz/rates](https://whanganui.govt.nz/rates)

## Horizons Regional Council rates

Horizons Regional Council rates are collected separately from Whanganui District Council.

For more information about Horizons' rates, call Horizons Regional Council on 0508 800 800 or visit: [horizons.govt.nz/property-rates](https://horizons.govt.nz/property-rates)

## Rates rebates and remission

The rates rebate scheme provides a subsidy for low-income home owners. If your household income is below \$30,100 then you may be eligible for a rates rebate of up to \$750.

For more information, visit: [whanganui.govt.nz/rates-rebate-scheme](https://whanganui.govt.nz/rates-rebate-scheme)

Ratepayers need to apply to Whanganui District Council for a rates rebate.

Those who are eligible will then either have their rates reduced by the amount of the rebate, or receive a refund if the rates have been paid in full for the year. Application forms are available from customer services at 101 Guyton Street or can be downloaded at: [ratesrebates.govt.nz](https://ratesrebates.govt.nz)

For the 2023/24 financial year (ending 30 June 2024) the council is making a one-off rates remission (reduction) of up to \$500 available for households facing a rates rise higher than \$700 – for more information, visit: [whanganui.govt.nz/rates-remission](https://whanganui.govt.nz/rates-remission)

**STONEWOOD**  
HOMES

YOUR LOCAL HOME BUILDER

*Whanganui*

Discover the possibilities.  
Invest in new!

☎ 027 466 5108 (Anthony)  
0800 86 00 00 (Office)

✉ [wanganui@stonewood.co.nz](mailto:wanganui@stonewood.co.nz)

🌐 [www.stonewood.co.nz](https://www.stonewood.co.nz)



STONEWOOD



# Housing for older people

**W**hanganui District Council provides quality, healthy home standards housing for people 65 years of age or older who have limited financial resources.

We own and rent to 275 pensioners in 16 separate complexes across Whanganui. There are 234 single units (including two for people with significant disabilities who use a wheelchair) and 41 suitable for couples. Each unit has an open-plan

living area with a separate bedroom and bathroom, and where the laundry area is combined in either the bathroom or kitchen.

Application forms are available from customer services at 101 Guyton Street or you can call us for more information on 06 349 0001.

For more detailed information and an application form, please visit: [whanganui.govt.nz/housing](http://whanganui.govt.nz/housing)



## Useful guidelines

If you are out and about enjoying our beautiful parks and reserves, or have recently moved to Whanganui, we have useful guidelines on our website to ensure you have a pleasant visit.

These guidelines/bylaws include, for example:

- Noise in our community – how to be a good neighbour or to let us know if noise is an issue in your neighbourhood
- Alcohol Control Bylaw – enhancing public safety and enjoyment of public places by minimising alcohol-related harm and offences in controlling the consumption and possession of alcohol in specified public places
- Smokefree and Vapefree Outdoor Areas Policy – promoting a healthy environment in our central city and parks by encouraging non-smoking and non-vaping in public areas and at events.

Visit: [whanganui.govt.nz](http://whanganui.govt.nz) for further council information and services. If you can't find what you are looking for, please call us on 06 349 0001.

## Plumber Dan

**Plumbing, Drainage,  
Gas & Heating**

- General Plumbing Maintenance
- Hot Water Systems
- Gas Installations & Maintenance
- Blocked Drains & CCTV
- Sewer & Stormwater Installations
- 3 x 1.5-5.5T Excavators available
- **Masport** HEATING Wood Fire Stockists
- Water Filtration Systems
- Bathroom Renovations

**Daniel Goldsworthy**

Registered Plumber & Drainlayer

[www.plumberdan.co.nz](http://www.plumberdan.co.nz)  
[office@plumberdan.co.nz](mailto:office@plumberdan.co.nz)



**Ph 021 635 517**



**Don't miss out  
on life because  
of poor hearing**



**We have great options to suit  
your lifestyle and budget.**

Simply Hearing is Whanganui's only independent and locally owned hearing clinic.

We provide a full range of hearing services, funding benefits and support:

- Comprehensive hearing tests
- Hearing aids
- Repairs and maintenance
- Batteries and accessories
- Hearing aid and recreation moulds
- School aged children assessments
- ACC assessments and claims
- War pension support
- WINZ funding applications
- Insurance claims
- Tinnitus management
- Specialist referrals

**Call or book your appointment online today**

phone: (06) 345 9799 • 35 Dublin Street, Whanganui 4500  
email: [info@simplyhearing.co.nz](mailto:info@simplyhearing.co.nz) • web: [simplyhearing.co.nz](http://simplyhearing.co.nz)





# Community

These details were provided to Community House by Whanganui community organisations and were correct at December 2023. Please be aware that contact details may change. If you would like your organisation included on the Community House database, or need to update your organisation's contact details, please call 06 347 1084 or visit: [communityhouse.org.nz](http://communityhouse.org.nz)

Community House is not responsible for incorrect or out-of-date information.

Air Training Corp.....027 313 0234  
.....9sqn@cadetforces.org.nz  
Amdram Musical Theatre.....027 584 2646  
.....president@amdramwhanganui.co.nz / graham@  
.....amdramwhanganui.co.nz  
AMDRAM Starlets.....022 156 8828  
.....melissa@amdramwhanganui.co.nz  
Amitabha Kadampa Buddhist Centre.....06 355 3524  
.....amitabha@xtra.co.nz  
Anglican Parish of Whanganui.....06 345 7723  
.....office@whanganuianglicans.org.nz  
Aramoho Toy Museum.....06 343 9148  
.....lyledanralph@gmail.com  
Artists Open Studios Whanganui.....06 348 0157  
.....aosw.trust@gmail.com  
Authentic Living whanganui.....027 403 2523  
.....authenticlivingwithlinda@gmail.com  
Bahai Faith.....022 057 1952 / 0800 224 247  
.....clgracef@hotmail.com  
Bason Botanic Gardens Trust.....  
.....info@basonbotanicgardens.org.nz /  
.....yourcouncil@whanganui.govt.nz  
Bird Rescue Whanganui / Manawatu.....027 453 5821  
.....birdrescuewhanganui@gmail.com  
Birds New Zealand and Birding Whanganui 021 072 1216  
.....Birds.Manawatu@birdsanz.org.nz  
Brass Whanganui Inc.....027 540 4159  
.....bruce.jellyman@gmail.com  
Brunswick Hall.....06 342 1854  
Bushy Park Homestead.....06 342 9879  
.....bushyparkbbwhanganui@gmail.com  
CAP Debt Centre.....0508 227 111  
.....newenquires@capnz.org  
Castlecliff Club Inc.....06 344 4449  
.....info@castlecliffclub.co.nz  
Castlecliff Coast Care.....06 344 1012  
.....pearsons@bythebeach.co.nz  
Castlecliff Residents Committee.....06 344 6264  
.....lynnedouglas1@xtra.co.nz  
Castlecliff Town Hall.....06 344 4874 / 021 057 1707  
Central Districts Spoon Club.....  
.....06 344 4764 / 022 415 8233  
.....gtcarterl6@gmail.com  
Chamber Music Whanganui.....027 329 7498  
.....ing.cull@gmail.com  
Christ Church Community Centre.....06 345 7723  
.....office@whanganuianglicans.org.nz  
Christadelphians.....06 345 5274  
Chrysanthemum Club.....06 345 0579 / 021 029 64894  
.....marggibbard@gmail.com  
Citizens Advice Bureau.....06 345 0844 / 0800 367 222  
.....whanganui@cab.org.nz  
Citroen Car Club Taranaki - Westcoast of New Zealand..  
.....06 751 3173  
.....julianfamily@xtra.co.nz  
City Mission Whanganui.....06 345 2139 ext 1  
.....admin@citymissionwhanganui.org.nz  
Club Metro.....06 349 0149  
Coastguard Central Region Inc.....0275 389 555  
.....lesley.slieker@nzcoastguard.org.nz  
Coastguard Whanganui.....06 344 4686 / 027 544 6687  
.....coastguard.whanganui@xtra.co.nz  
Community Drumming Whanganui.....021 135 9948  
.....communitydrummingwhanganui@gmail.com  
Community Education Whanganui.....06 345 4717  
.....manager@communityeducation.nz /  
.....admin@communityeducation.nz  
Community Fruit Harvesting Whanganui.....021 101 9007  
.....pickfruitwhanganui@gmail.com  
Community Fruit Harvesting Manawatu.....027 330 3312  
.....communityfruitmanawatu@gmail.com  
Community House Whanganui.....06 347 1084  
.....manager@communityhouse.org.nz  
Community Legal Advice Whanganui. (CLAW)  
.....06 348 8288  
.....claw@claw.co.nz

Congregational Christian Church in Samoa Whanganui.....  
.....06 344 4287  
Cooks Gardens Events Centre, Velodrome,  
War Memorial Hall and Opera House.....06 349 0513  
.....events@whanganui.govt.nz  
Cotton On Quilters.....06 348 4002 / 027 280 7882  
.....cottonquilters@gmail.com  
Craft Club St Peters.....06 345 7009  
Craft Group Christ Church Community Centre.....  
.....06 345 7723  
.....office@whanganuianglicans.org.nz  
Creators@Home.....0800 CREATORS (0800 2732 8677)  
.....info@creators.org.nz  
Department of Internal Affairs Community Operations..  
.....0800 824 824  
.....LowerNorth&Nelson@dia.govt.nz  
District Federation of Women's Institutes.....04 566 1584  
.....exec@wi.org.nz  
Duncan Pavillion.....0508 728 454  
Eastside Craft Group.....0220 965 673  
Eastside Card group.....06 927 6707 / 022 393 8791  
.....Facebook  
Eckankar.....06 344 7057  
.....graemecfoster@xtra.co.nz  
Elegant River Roses / Red Hat Society.....021 594 023  
.....gramma.barbara@gmail.com  
Elim Worship Centre.....06 348 8012 / 027 630 5636  
.....elimwhanganui@gmail.com  
Embroiderers' Guild.....  
.....whanganui.embroiderers@gmail.com  
English Language Partners Whanganui (also Interna-  
tional Women's Group).....027 257 7776  
.....whanganui@englishlanguage.org.nz  
Entomological Society of NZ (Wellington Branch).....  
.....021 538 124  
.....Julia.kasper@tepapa.govt.nz  
Equippers Whanganui Trust.....06 345 2051  
.....whanganui@equipperschurch.com  
Faith City Church.....06 345 0265  
.....office@fcc.net.nz  
Fine Arts Whanganui Gallery.....06 348 2080  
.....fineartswhanganui@gmail.com  
Fish and Game Council.....021 270 0239  
.....taranaki@fishandgame.org.nz  
Fordell Hall.....027 273 7338  
Forest and Bird Protection Society.....06 345 2651  
.....whanganui.branch@forestandbird.org.nz  
Founders Care Trust.....06 345 5663  
.....wendy.kopura@founderscare.org.nz  
Friends of the Hospital.....027 468 0581 / 06 342 3764  
.....lesleycollins@xtra.co.nz  
Friends of the Opera House.....06 344 8984 /  
.....027 450 9456  
.....bejae9@gmail.com  
Friends of the Whanganui River.....06 345 0895  
.....friendsofthewhanganuiriver@gmail.com  
Girl Guiding NZ.....06 345 4626 / 027 341 3984  
.....nic.kids@slingshot.co.nz  
Gladiolus Club.....06 347 2847  
.....w.hug@xtra.co.nz  
Glastonbury Dance Studio.....  
.....027 441 5880  
.....mark.glastonbury@hotmail.com  
Glendarroch Scottish Country Dance Club 027 284 1794  
.....glendarroch@dancescottish.org.nz  
Gonville Games Club.....06 344 5872  
.....gonville@whanganuilibrary.com  
Gonville Knitting Group.....06 344 5872  
.....gonville@whanganuilibrary.com  
Government Superannuitants Association of NZ  
Whanganui Branch.....0800 888 472  
.....whanganui@gsa.org.nz  
Green Bikes Whanganui.....06 345 6000  
.....sustainablewhanganui@gmail.com

Green Party Whanganui.....021 0620 491  
.....whanganui.convenor@greens.org.nz  
Green Pastures Camp.....06 342 9733 / 027 201 3193  
.....gpcwhanganui@gmail.com  
Grey Power Whanganui Inc.....  
.....info@greypowerwhanganui.co.nz  
Grumpy Old Men Enterprises (G.O.M.E) Trust.....  
.....06 34 445 66 / 021 709 508 / 027 444 7474  
Hakeke community Centre and library.....022 689 2459  
.....hakekestlibrary@gmail.com  
Halberg Foundation.....0800HALBERG  
.....office@halberg.co.nz  
Holy Family Church.....06 345 3872  
.....info@catholicparishwhanganui.org.nz  
Horizons Regional Council Road Safety.....  
.....0508 800 800 ext 5762  
.....val.overweel@horizons.govt.nz  
Horticultural Society.....06 347 2847  
.....w.hug@xtra.co.nz  
Housing New Zealand / Kainga Ora Homes and Com-  
munity.....0800 801 601  
.....enquiries@kaingaora.govt.nz  
Hula on the Awa.....027 463 1199  
Ingestre Street Bible Church.....06 3489917  
.....connect@isbc.org.nz  
Institute of Registered Music Teachers of New Zealand..  
.....027 329 7498  
.....ing.cull@gmail.com  
Josephite Retreat Centre.....06 345 5047 ext 3  
.....pam.hopper@sosj.org.au  
Justice of the Peace and Marriage Celebrant.....  
.....027 243 8447  
Justice of the Peace Association.....  
.....whanganui.jps@gmail.com  
Kai Hub.....022 515 9038  
.....kiaora@whanganuikaihup.org /  
.....whanganuikaihup@gmail.com  
Kai Iwi Hall.....06342 9827 / 027 667 4163  
Kai Iwi Marae.....06 346 5707  
.....kaiiwi.marae@gmail.com  
Kaiwhaiki Marae.....027 296 8741  
.....peter13@slingshot.co.nz  
Kaumatua Kaunihera o Whanganui ( Elders Council ).....  
.....021 144 3808  
.....pakaraka@live.com  
KittyCat Fixers.....021 059 5863  
.....info@kittycatfixers.org.nz  
Kiwi Conservation Club KCC.....  
.....kccinbox@forestandbird.org.nz /  
.....whanganui@kcc.org.nz  
Koha Knitters.....022 083 0901  
Labour Whanganui.....steph.lewiswhanganui@gmail.com  
La Fiesta.....06 345 6833  
.....womnet.whanganui@gmail.com  
Land Based Training Ltd.. 0508 872 466 / 06 349 0077  
.....info@landbasedtraining.co.nz  
Library - Alexander Heritage.....06 349 1000 ext 803  
.....heritage@whanganuilibrary.com  
Library - Gonville Cafe.....06 344 5872  
.....gonville@whanganuilibrary.com  
Library - Hakeke St.....06 927 6707 / 022 689 2459  
.....hakekestcommcentre@gmail.com  
Library - Suzanne Aubert @Jerusalem.....06 342 8190  
.....old.convent@compassion.org.nz  
Library - Whanganui District (Davis).....06 349 1000  
.....info@whanganuilibrary.com  
Life Education Trust.....021 554 031  
.....whanganui@lifed.org.nz  
Life to the Max Gonville Community Police Station.....  
.....06 344 8555  
.....office@lifetothemaxtrust.org.nz  
Linkpeople.....06 348 7016  
.....lynette.webb@linkpeople.co.nz /  
.....micheal.lamb@linkpeople.co.nz



Lions Club of Wanganui ..... 0800 546 672  
 ..... md202.secretary@lionsclubs.org.nz  
 Literacy Aotearoa Whanganui ..... 06 262 7024  
 ..... info.c5@literacy.org.nz  
 Louise Herdman Mosaics ..... 027 375 4715  
 ..... louiseherdmanmosaics@gmail.com  
 Lutheran Church ..... 06 327 8092  
 ..... mlparish@xtra.co.nz  
 Mainly Music - St James Presbyterian Church .....  
 ..... 06-343 9746  
 ..... office@stjameswhanganui.nz  
 Mainly Music - Trinity Methodist Church ..... 021 188 2518  
 Mainstreet Whanganui Inc. .... 06 348 0157  
 ..... info@mainstreetwhanganui.co.nz  
 Man Up ..... 0800 162 687 (0800 1MANUP)  
 ..... office@manup.org.nz  
 Manawatu Poultry and Pigeon Club ..... 06 357 1268  
 ..... lynnronpratt@outlook.com  
 Mangamahu Hall ..... 06 342 2860  
 ..... gsroberts@inspire.net.nz  
 Maori Postal Aotearoa ..... 06 343 7957  
 ..... info.maoripostal@gmail.com  
 Marae - Te Ao Hou (Upper Aramoho) .....  
 ..... 027 342 6892  
 ..... geoffrey.hipango@gmail.com  
 Margaret Watt Children's Trust ..... 06 345 4292  
 ..... max.barbara@inspire.net.nz  
 Masonic Hall Trust Board ..... 021 669 832  
 Masonic Lodge - The United Lodge of Wanganui  
 No 468 ..... 06 345 7139  
 ..... raglen411@gmail.com  
 Maungarongo Marae ..... 06 385 8192  
 Maxwell Hall ..... 027 442 6171  
 ..... whitemessages1@gmail.com  
 Meccano Club, Manawatu, Wanganui, Taranaki  
 ..... meccano@xtra.co.nz  
 Mediaworks Wanganui ..... 06 965 6300  
 ..... wanganui@morefm.co.nz  
 Men's Shed Wanganui ..... 027 229 0994  
 ..... rustick@inspire.net.nz  
 Mensa Wanganui .....  
 ..... enquiries@mensa.org.nz

Military Vehicle Collectors Club NZ - Wanganui .....  
 ..... 06 343 7266 / 021 648 398  
 ..... whanganui@nzmvc.org.nz  
 Miniature Club - Wanganui ..... 06 343 6843  
 ..... minibron@slingshot.co.nz  
 Ministry of Justice ..... 0800 650 654 / 06 349 0751  
 Mission without Borders (Knitting Arm) Operation .....  
 Cover Up ..... 06 345 2343  
 ..... whanganuicity.corps@salvationarmy.org.nz  
 Moawhango Marae ..... 06 388 1156  
 ..... tracey.hiroa@mokaipateaservices.org.nz  
 Motor Trade Association ..... 04 385 8859 / 0800 001 144  
 ..... mta@mta.org.nz  
 Multicultural Council Rangitikei/Wanganui Inc. ....  
 ..... 06 343 8128 / 021 213 3274  
 ..... info@wanganuimulticultural.co.nz  
 Musicians Club ..... 021 154 6159  
 ..... whanganuimusician@gmail.com  
 Music Society Wanganui ..... 06 342 1886  
 ..... soulsby@farmside.co.nz  
 National Council of Women .....  
 ..... jennysayward@gmail.com  
 New Zealand Defence Force .....  
 ..... 04 496 0999 / 0800 136 723  
 New Zealand Glassworks ..... 06 927 6803  
 ..... info@nzglassworks.com  
 New Zealand Law Society (Whanganui Branch) .....  
 ..... 06 349 2814 / 04 472 7837  
 ..... whanganui@lawsociety.org.nz  
 New Zealand Mounted Games Association .....  
 ..... nzmgamesecretary01@gmail.com  
 New Zealand Relay and New Zealand Video  
 Interpreting Service ..... 0800 4713 713  
 ..... helpdesk@nzrelay.co.nz  
 New Zealand Sign Language Teachers Association .....  
 ..... info@nzslta.org.nz  
 Nga Tangata Tiaki O Whanganui Trust ..... 0800 AWA  
 TUPUA (0800 292 8878) ..... office@ngatangatatiaki.co.nz  
 Numismatics Society - Coin, Banknote and Medal  
 Collectors ..... 06 345 6587  
 NZ American Association ..... 04 902 0265  
 ..... nzaa.info@gmail.com

NZ Camellia Society - Wanganui Branch ..... 06 327 6405  
 NZ Choral Federation - Manawatu/Wanganui Region .....  
 ..... 06 355 3908 / 027 315 7660  
 ..... roytankersley51@gmail.com  
 NZ Founders Society Wanganui Branch ..... 06 343 8232  
 ..... earthsheltered@hotmail.com  
 NZMCA - Mountains to the Sea ..... 09 298 5466  
 ..... membership@nzmc.org.nz  
 NZ Society of Genealogists - Whanganui Branch .....  
 ..... 021 919 626  
 ..... whanganui@genealogy.org.nz  
 NZME Radio ..... 06 349 0710  
 Okoia Hall ..... 06 342 4801 / 022 1532 734  
 Onechurch Wanganui ..... 06 345 3557  
 ..... nigel@centralbaptist.org.nz  
 Oranga Tamariki ..... 0508 326459  
 ..... contact@ot.govt.nz  
 Outward Bound ..... 0800 688 927  
 ..... info@outwardbound.co.nz  
 Paige's Book Gallery ..... 06 348 9095  
 ..... hello@paigesbooks.com  
 Pakaraka Marae - Maxwell ..... 021 746 821  
 ..... 46821bob@gmail.com  
 Paloma Gardens ..... 06 342 7857  
 ..... paloma@paloma.co.nz  
 Parikino Marae Reservation Trust ..... 06 342 5819  
 Pasifika Vision Forum Charitable Trust. Born and Raised  
 Pasifika Early Childhood Education ..... 06 343 5441  
 ..... bornandraisedpasifika@xtra.co.nz  
 Paws and Porcelain ..... 027 440 1420  
 ..... judithle Fleming@xtra.co.nz  
 Petre 60s Up Wanganui ..... 06 348 2409  
 Philatelic Society - Wanganui ..... 06 344 7453  
 ..... burlmore1234@gmail.com  
 Phoenix Incorporated Manawatu ..... 06 354 7520  
 ..... phoenix.inc@xtra.co.nz  
 Plastic Free Whanganui ..... 021 023 338 63 / 06 343 9240  
 ..... plasticfreewhanganui@gmail.com  
 Plunket Playgroups ..... 0800 692 445  
 ..... manwangadmin@plunket.org.nz  
 Porse Playgroups ..... 06 345 2600 / 0800 023 456  
 ..... wanganui@porse.co.nz

NEW TO  
WHANGANUI?  
we can help!



with settling in  
and connecting  
with local people,  
cultural events and  
activities

We seek to  
promote a friendly,  
inclusive, safe space  
for newcomers in our  
community



HELPING NEWCOMERS FEEL AT HOME



info@wanganuimulticultural.co.nz



whanganuimulticultural.co.nz



Precious Paws Paradise Wanganui ..... 0274 737 710  
 ..... marylou.nation@yahoo.co.nz  
 Pride Whanganui Trust ..... 021 084 04336  
 ..... info@pridewhanganui.co.nz  
 Prison Chaplain ..... 06 349 6800  
 Prisoners Aid & Rehabilitation Service Trust (PARS) .....  
 ..... 06 345 5969  
 ..... admin@prisonersaid.co.nz  
 Progress Castlecliff Inc ..... 021 123 1750  
 ..... duncanpavilion@gmail.com / admin@castlecliff.nz  
 Quaker Meeting House ..... 027 342 9656  
 ..... whanganui@quakers.org.nz / janlou@xtra.co.nz  
 Quaker Settlement ..... 06 347 7409  
 ..... settlement@quaker.org.nz  
 Radio Control Boat Club ..... 06 345 3877  
 Rail and Locomotive Society NZ ..... 06 357 5216  
 ..... sandbingram@yahoo.com  
 Rapanui/Mowhanau Community Centre ..... 06 342 9658  
 Ratana ICT Hub ..... 06 342 6995 / 027 231 9050  
 ..... Facebook  
 Re-dress, Anglican Social Services Wanganui .....  
 ..... 06 348 7939 / 06 345 3528  
 ..... redressonridgeway61@gmail.com  
 Rebus Club - Pukenamu ..... 021 717 196  
 ..... pukenamusecretary1@gmail.com  
 Rebus Club of Wanganui ..... 027 272 4477  
 Red Kiwi Orienteering ..... 06 35 56152  
 ..... red.kiwi.o@gmail.com  
 Reformed Church ..... 020 4184 3949  
 ..... nathanielrademaker@gmail.com  
 Repertory theatre ..... 021 146 7822  
 ..... whanganuiurep@gmail.com  
 Restorative City Whanganui Trust .....  
 ..... 06 343 3645 / 027 274 8388  
 ..... info@wrjt.co.nz  
 River City Artists ..... 06 343 6316 / 027 459 9448  
 ..... joeval@xtra.co.nz / rcawhanganui@gmail.com  
 River City Caravan Club ..... 06 346 5273 / 021 929 97073  
 ..... graemeandcheryl@inspire.net.nz  
 Rivercity Filipino Club ..... 021 115 2808  
 ..... rhonapedro@gmail.com  
 River City Press ..... 06 345 3666  
 ..... rivercitypress@xtra.co.nz

River Exchange & Barter System (REBS) .....  
 ..... 021 211 8169 / 06 344 5032  
 ..... phvariac3@gmail.com  
 Riverboat MV Wairua ..... 027 949 3630  
 ..... info@motorvesselwairua.co.nz  
 Rotary Club of Whanganui North ..... 027 276 1776  
 ..... secretaryrotarynorth@gmail.com  
 Rotary Club of Whanganui ..... 027 315 1032  
 ..... secretary@wanganuirotary.org.nz  
 Roundtable 42 Wanganui ..... 021 0255 6916 / 06 347 8472  
 ..... d764776@gmail.com  
 Royal Life Saving Society NZ - Wanganui Branch .....  
 ..... 06 343 2677  
 ..... kidswm@hotmail.co.nz  
 RTLB Cluster 25 ..... 06 349 0499  
 ..... tawheroschool@xtra.co.nz  
 Rural Women New Zealand .....  
 ..... 04 473 5524 / 0800 256 467  
 ..... enquiries@ruralwomennz.nz  
 Rural Women NZ - Fordell-Mangamahu Branch .....  
 ..... 027 283 1113  
 ..... vincentmeats@gmail.com  
 Safer Whanganui ..... 06 349 3104  
 ..... lauren.tamehana@whanganui.govt.nz  
 Salvation Army ..... 06 345 2343  
 ..... whanganuicity.corps@salvationarmy.org.nz  
 Sarjeant Gallery Te Whare o Rehua ..... 06 349 0506  
 ..... info@sarjent.org.nz / front.house@sarjent.org.nz  
 Save the Children NZ Wanganui Branch ..... 0800 167 168  
 ..... info@savethechildren.org.nz  
 Schola Sacra Choir ..... 06 344 7751  
 ..... pat.vic.reu@gmail.com  
 Scouts New Zealand Lower North Island Region .....  
 ..... 0800 726 887  
 ..... volunteersupport@scouts.nz  
 Scrabble Club ..... 027 428 5758  
 ..... scrabblynne@gmail.com  
 Seventh-day Adventist Church ..... 06-348 7211  
 ..... whanganuisdachurch@gmail.com  
 Singing for your Brain ..... 06 345 4701 / 027 470 1635  
 ..... mumsocks@xtra.co.nz  
 Sisters of Compassion Jerusalem ..... 06 342 8190  
 ..... old.convent@compassion.org.nz

Sixtys Up Movement ..... 06 343 6690 06 345 4701  
 ..... mumsocks@xtra.co.nz  
 Space Whanganui ..... 06 343 1829  
 ..... spacewhanganui@gmail.com  
 SPCA ..... 06 345 3369  
 ..... whanganui.info@spca.nz  
 Wanganui & District Gundog Society ..... 021 483 778  
 ..... keridale57@gmail.com  
 St Andrew's Hall ..... 06 344 2881 / 021 150 8342  
 ..... whanganuihighlandpipeband@gmail.com  
 St Andrew's Presbyterian Church .....  
 ..... 06 345 2816 / 027 318 7272 / 06 343 8046  
 ..... revswvanos@gmail.com  
 St Anne's Parish ..... 06 343 8389  
 ..... st.annes.wanganui@xtra.co.nz  
 St Chad's Church ..... 06 345 7723  
 ..... office@whanganuianglicans.org.nz  
 St James Presbyterian Church, Wanganui East .....  
 ..... 06 343 9746  
 ..... office@stjameswhanganui.nz  
 St John - Wanganui ..... 06 345 0878  
 ..... info@stjohn.org.nz  
 St Johns Club Inc ..... 06 348 0082  
 ..... manager@stjohnsclub.co.nz  
 St Mary's Parish ..... 06 3453872 / 027 385 9615  
 ..... info@catholicparishwhanganui.org.nz  
 St Paul's - St Marks Presbyterian Parish ..... 06 345 9318  
 ..... officestpaulschurch@inspire.net.nz  
 St Pauls Memorial Church Putiki ..... 06-349 0508  
 St Vincent de Paul Society ..... 06 345 0161  
 STARS Education Inc (formerly SPELD) ..... 021 0288 2368  
 ..... starseducationinc@gmail.com  
 Steamrail Wanganui Inc .....  
 ..... steamrailwanganuiinc@gmail.com  
 Stone Soup ..... 06 344 7860 / 027 426 6494  
 ..... whanganui@teorahou.org.nz  
 Surf Lifeguard Service ..... 06 345 6958  
 ..... info@wanganuils.org.nz  
 Taurahere Marae ..... 06 344 4874  
 ..... lisa@teheti.co.nz  
 Te Atawhai o te Ao ..... 06 345 2680  
 ..... info@teatawhai.maori.nz



WHANGANUI | osteopathy

Helping you to become a more functional you.

## WHAT CAN WE HELP WITH?

As a collective health hub, we offer skilled Osteopathy, Naturopathy, Herbalist and Craniosacral Therapy that can help with the following:

Chronic Pain • Paediatric Conditions • Sports Injuries • Rehabilitation  
 • TMJ Dysfunction • Headaches • Back Pain & More

**Jonathan Lloyd Paine, Daniel Heymann, Imogen Winter, Aidan Smith, Tess Charles**  
**Daniel Heymann** (Craniosacral Therapist), **Erin Evis** (Naturopath/Herbalist)

P: 06 345 2232 • F: 06 345 2232 • E: info@osteos.co.nz

A: 7 Rutland Street, Whanganui W1 • www.whanganuiosteopathy.co.nz





# FLEETING FANCY GALLERY & STUDIO

Melanie Fleet is a quirky and alternative award-winning artist based in Whanganui. Melanie jumped ship from the 9-5 work slog and became a full-time artist in May 2022.

Pop art, assemblage art and photography are Melanie's main areas of expertise. However, she will try her hand at anything that takes her fancy.

Visit Melanie at her central city studio - 62B Taupo Quay, by City Bridge.

Open Thurs, Fri & Sat | 10am - 2pm.



[facebook.com/fleetingfancy](https://facebook.com/fleetingfancy)



[instagram.com/fleeting.fancynz](https://instagram.com/fleeting.fancynz)



[fleetingfancy.co.nz](https://fleetingfancy.co.nz)



Te Awa Steiner Education Trust ..... 06 345 1086 / 021 185 3943  
 Te Kaahui o Rauru ..... 06 346 5707  
 admin@rauru.iwi.nz  
 Te Ora Hou Whanganui ..... 06 344 7860  
 whanganui@teorahou.org.nz  
 Te Puni Kokiri Whanganui ..... 06 348 1400 / 0800 875 884  
 tpk.tetaihauauru@tpk.govt.nz  
 The Eco School ..... 06 344 5013 / 022 190 7323  
 theecoschool@gmail.com  
 The Friendship Force ..... 021 320 903  
 manawatu-whanganui@friendshipforce.org.nz  
 The Guyton Group ..... 06 348 9095  
 lesley@steadanddaughters.com  
 The Koha Shed ..... 0274 040 240  
 thekohashedaotearoa@gmail.com  
 The Korean Society of Whanganui ..... 06 344 5334  
 pcnzkim@gmail.com  
 The Peace Through Unity Charitable Trust ..... 027 616 6260 / 022 400-5084  
 info@peacethroughunity.org.nz  
 The River Traders and Whanganui Farmers Markets Trust ..... 027 229 9616  
 info@whanganuivermarkets.nz  
 The Whanganui Organ and Keyboard Club ..... 06 347 2447  
 Theosophical Society ..... 021 212 3819 / 06 929 5924  
 theosophywhanganui@gmail.com  
 Trefoil Guild - Whanganui ..... 06 343 8232  
 watsonia@actrix.co.nz  
 Trinity Methodist Women's Fellowship Group ..... 06 344 2210  
 Triumph Owners Motorcycle Club Whanganui ..... 021 963 280  
 tomccwhanganui@gmail.com  
 Tupoho Investments Ltd ..... 06 348 0395  
 TPOT@tupoho.com  
 Tupoho Whanau Trust Rangahaua Marae ..... 06 348 0395  
 admin@tupoho.com  
 Twinkle Toes Music Group ..... 027 368 2306  
 U3A ..... 06 347 6817  
 hrhig@xtra.co.nz  
 Ukelele Orchestra ..... 027 540 4159  
 brucejellyman@gmail.com  
 United Nations Association - Whanganui Branch ..... 029 2422 440  
 wanganui@unan.org.nz  
 Vintage Car Club ..... 06 344 2221  
 wanganui@vcc.org.nz  
 Virginia Lake Trust ..... 06 345 2645 / 027 445 0460  
 terryjoancoxon@xtra.co.nz  
 Virtuoso Strings Charitable Trust ..... 021 026 17065  
 contact@virtuosostings.co.nz  
 Vitae ..... 0508 664 981 / 04 472 2331  
 theteam@vitae.co.nz  
 Voice for Life ..... admin@voiceforlife.org.nz /  
 whanganui@voiceforlife.org.nz

Volkswagen VW Owners Club ..... 06 348 5545  
 marksarahclaughton@xtra.co.nz  
 Volunteer Whanganui ..... 06 347 9430  
 whanganuivolunteercentre@xtra.co.nz  
 Waimarie Centre ..... 06 347 1863 / 0800 783 2637  
 info@waimarie.co.nz / manager@waimarie.co.nz  
 Wai Ora Christian Community Trust ..... 027 337 5927  
 admin@waiora.org.nz  
 Wairere Rebus Club ..... 027 337 5927  
 wairererebus@gmail.com  
 Wanderers Social Touring Club ..... 06 343 1670 / 027 442 6042  
 Wanganui A&P Association ..... 021 752 477  
 foghorn\_3@hotmail.com  
 Wanganui Aeromodellers Club ..... 06 343 7708  
 steveandlindaenglefield@xtra.co.nz  
 Wanganui Airport Control Tower Restoration Group ..... 06 347 1749 / 027 315 1032  
 wjohn.henderson@xtra.co.nz  
 Wanganui and Rangitikei Victim Support Group ..... 0800 842 846  
 Wanganui Area Neighbourhood Support Group Inc ..... 06 344 6746  
 nsg.wang@xtra.co.nz  
 Wanganui Arts Society ..... 06 347 2649  
 rei@imagesigns.co.nz  
 Wanganui Astronomical Society ..... 027 777 2107  
 astromark@xtra.co.nz  
 Wanganui Beekeepers Club ..... 06 343 6248  
 nfarrer@xtra.co.nz  
 Wanganui Bird Club ..... 06 347 1896 / 021 039 8096  
 Wanganui Budget Advisory Service ..... 0800 183 183 / 027 243 3362  
 wbas@wbas.org.nz  
 Whanganui Cadet Unit ..... 027 222 9178  
 wancu@cadetforces.org.nz  
 Wanganui Car Club ..... 027 313 0234  
 wanganuicarclub@outlook.com  
 Wanganui Caravan Club ..... 021 299 6139  
 gayemaddox@outlook.co.nz  
 Wanganui Chess Club ..... 06 344 3298 / 022 344 3298  
 wmadden@xtra.co.nz  
 Wanganui Chinese Association ..... 021 065 6025  
 leo\_magnus@yahoo.com.sg  
 Wanganui Classic Motorcycle Club ..... 021 035 6757  
 wanganuiclassic@gmail.com  
 Wanganui Coastguard Radio ..... 06 345 7969 /  
 027 545 7969  
 seagers.nz@gmail.com  
 Wanganui Community Choir ..... 027 360 1335  
 edmac@xtra.co.nz  
 Wanganui Community Patrol ..... 021 0883 8356  
 wanganuicommunitypatrol@gmail.com  
 Wanganui Competitions Society Inc ..... 027 859 4495  
 wanganuicompitions@outlook.co.nz

Wanganui Contract Bridge Club ..... 06 345 6203  
 bridgewanganui@xtra.co.nz /  
 contactus@bridgewanganui.com  
 Wanganui Country Music Club ..... 021 420 069  
 Wanganui Dog Training Club ..... 027 273 6726  
 wanganuidogobedienceclub@gmail.com  
 Wanganui East Baptist Church ..... 06 343 8999  
 webc@webc.org.nz  
 Wanganui East Club Inc ..... 06 343 7023  
 info@wanganuieastclub.co.nz  
 Wanganui Enterprises ..... 06 343 7053  
 mail@fivestar.org.nz  
 Wanganui Floral Art Group ..... 027 6713 / 027 236 8046  
 paul@dmlconstruction.co.nz  
 Wanganui Garden Club ..... 027 944 2166  
 yvonnembradbury@gmail.com  
 Wanganui Heritage Event Trust ..... 06 345 0845  
 peter@robinsonassociates.nz  
 Wanganui Jazz Club ..... 06 927 5325 / 022 431 5434  
 kenchernoff76@gmail.com  
 Wanganui Kennel Society ..... 027 810 4057  
 ericajellyman@hotmail.com  
 Wanganui Lyric Singers ..... 021 0229 4425  
 Wanganui Male Choir (Inc) ..... 027 240 4598  
 Wanganui Methodist Parish ..... 06 345 7394  
 wg.meth-parish@xtra.co.nz  
 Wanganui Model Railway & Engineering Society ..... 027 628 5826  
 wmrands@gmail.com  
 Wanganui Navy Cadets ..... 027 213 5421  
 sharon.tutaki@cadetforces.org.nz  
 Wanganui Orchid Society ..... 021 259 3937  
 Wanganui Repertory Theatre Inc ..... 021 146 7822  
 whanganuirep@gmail.com  
 Wanganui Returned Services Association RSA C/o Club  
 Metro ..... 021 115 8905  
 Admin@wanganuirsa.co.nz  
 Wanganui Road Rodders Inc ..... 06 345 4402 /  
 027 444 1744  
 grant@riversspeed.co.nz  
 Wanganui Rock and Mineral Club Inc .....  
 wanganuirockclub@gmail.com  
 Wanganui Spinners & Weavers Guild Inc .....  
 creativefibrewanganui@hotmail.com  
 Wanganui Spiritual and Awareness Centre .....  
 027 697 6308  
 carolwatt77@gmail.com  
 Wanganui Technical Boys & City College Past Students  
 Association ..... 027 506 3341  
 damian.peeti@gmail.com  
 Wanganui Toastmasters 2417 .....  
 021 744 106 / 027 247 0147 / 0210 271 4131  
 whanganuitoastmasters@gmail.com  
 Wanganui Toy Library Inc ..... 027 746 6153  
 wanganuitoylibrary@gmail.com



**FAITHCITY CHURCH**

**BUILDING ON CHRIST**

**BONDING IN HIS LOVE**

**BLESSING THE FUTURE GENERATIONS**

**SUNDAY SERVICE DETAILS**

**127 SPRINGVALE ROAD | 8.30AM • 10.30AM**

@FAITHCITYNZ FCC.NET.NZ 06 345 0265 OFFICE@FCC.NET.NZ



**FOR GOOD HEALTH**

**Thai Traditional Massage \$70/hour**

**Foot Massage \$70/hour**

**Oil Massage \$80/hour**

**Neck and Shoulder Stress Relief \$20/15mins**

**Vouchers Available Great Gift Idea**

Great for Circulation | 64 Guyton Street, Wanganui  
 Ph: 348 8466 | Mon-Fri: 10.30am-6.30pm; Sat: 10.30am-2pm



Wanganui Triumph Riders Club .....  
 .....wanganui@triumphriders.co.nz  
 Wanganui Turners & Woodcraft Group .....  
 .....wanganuiwoodcraft@gmail.com  
 Wanganui Women's Club.....06 345 7897  
 Wanganui Young Farmers .....  
 .....wanganui@youngfarmers.co.nz  
 Ward Observatory .....027 245 8066 / 06 345 6954  
 .....astromarksonline@gmail.com  
 Whakaaroanui Ki te Ora, Maori Women's Welfare League.....  
 .....021 144 3818  
 .....pakaraka@live.com  
 Wanganui Arts at the Centre.....022 151 2058  
 .....wanganuiarts@gmail.com  
 Wanganui Attendance Services .....06 349 0183/  
 .....021 0248 2072  
 .....was@wcc.school.nz  
 Wanganui Bicycle Users Group (WBUG) .....345 6000  
 (messages only).....wbug@can.org.nz  
 Wanganui Camera Club.....027 212 6790 021 815 426  
 .....secretary@whanganuicameraclub.org.nz  
 Wanganui Central Baptist Church.....06 3477740  
 .....office@centralbaptist.org.nz  
 Wanganui Chamber of Commerce and Industry .....  
 .....06 345 0080  
 .....admin@whanganuichamber.net.nz  
 Wanganui Community Foundation.....022 595 8700  
 (messages only).....wbug@can.org.nz  
 Wanganui Community Living Trust.....06 3480089  
 .....tie@wclt.co.nz  
 Wanganui Creative Space.....021 230 4095  
 .....wanganuics@gmail.com  
 Wanganui District Council.....06 349 0001  
 .....yourcouncil@whanganui.govt.nz  
 Wanganui District Licensing Committee...06 349 0001  
 .....DLCAministration@whanganui.govt.nz  
 Wanganui Environmental Base (WhEB) Sustainable  
 Wanganui.....06 345 6000  
 .....sustainablewhanganui@gmail.com  
 Wanganui Festival of Cultures.....06 348 0157  
 .....geoff@mainstreetwanganui.co.nz  
 Wanganui Film Society .....  
 .....whanganuifilmsociety@gmail.com

Wanganui Highland Pipe Band .....  
 .....06 347 7309 / 027 264 7459  
 .....graemefos@icloud.com /  
 .....whanganuihighlandpipeband@gmail.com  
 Wanganui i-SITE Visitor Centre.....0800 926 426  
 .....info@whanganui-isite.nz  
 Wanganui Karaoke Club .....021 028 61658  
 .....glitteringdiamondirene@hotmail.com  
 Wanganui Learning Centre Trust .....06 348 4950  
 .....wlearningc@gmail.com  
 Wanganui Literary Festival Trust .....  
 .....whanganuiliteraryfestival@gmail.com  
 Wanganui Mahjong Club..06 343 2306 / 021 069 6132  
 Wanganui Maori Wardens Assn - Wanganui .....  
 .....0274 159 651  
 .....seelw@tpk.govt.nz  
 Wanganui Museum Botanical Group .....06 344 1250  
 .....wbotgp@gmail.com  
 Wanganui Musicians Club.....021 256 7647  
 .....whanganuimusicians@gmail.com  
 Wanganui Newcomers Network.....021 135 9948  
 .....whanganui@newcomers.co.nz  
 Wanganui Opera Week .....  
 .....nzoperaschool@outlook.com  
 Wanganui Potters Studio.....  
 .....whanganuiotters@gmail.com  
 Wanganui Regional Heritage Trust.....06 327-7280  
 .....whanganui.heritagetrust@gmail.com  
 Wanganui Regional Museum .....06 349 1110  
 .....info@wrm.org.nz  
 Wanganui Resource Recovery Centre.....06 348 7950  
 .....accounts@wrrc.co.nz  
 Wanganui Scout Group.....027 326 7851  
 .....whanganui@group.scouts.nz  
 Wanganui RSA.....06 349 0149 / 027 344 5750  
 .....Admin@wanganuirsa.co.nz  
 Wanganui Sister Cities - WDC.....06 349 3103  
 .....marianne.cavanagh@whanganui.govt.nz  
 Wanganui Tramways .....06 344 5495 / 022 123 4535  
 .....whanganuitram12@gmail.com  
 Wanganui Summer Programme Trust .....021 438 440  
 .....whanganuisummerprog@gmail.com

Wanganui UCOL .....0800 GO UCOL (0800 468 265)  
 .....enquiry@ucol.ac.nz  
 Wanganui UCOL - Maori and Pacifica Student Support  
 .....06 965 3801 extn 60831  
 .....m.robbs@ucol.ac.nz  
 Wanganui Vintage Weekend .....  
 .....info@whanganuivintageweekend.nz  
 Widows Christian Fellowship .....021 115 2243  
 .....jill.clarke1@xtra.co.nz  
 Women's Institute - Kaitoke.....06 344 6041  
 .....anncharlie@xtra.co.nz  
 Women's Network (Wanganui) Inc .....06 345 6833  
 .....womnet.wanganui@gmail.com  
 Work and Income.....0800 559 009  
 Workbridge.....0508-858-858  
 .....whanganui@workbridge.co.nz  
 Woven Whanau.....021 031 8571  
 .....lynette@wovenwhanau.org.nz  
 YMCA Camp Raukawa.....06 349 0197 / 0800 962 248  
 .....contact@central.nz  
 YMCA Central.....0800 962 248  
 .....contact@ycentral.nz  
 Youth Hostel Association & Backpackers.....06 348 2301  
 .....Whanganui@yha.co.nz  
 Youth Service, MSD .....0800 559 009  
 .....Youth\_Service\_Wanganui@msd.govt.nz  
 Youth Services Trust Wanganui YST .....06 348 9935  
 .....admin@yst.org.nz  
 Youth Wanganui Catholics .....021 256 0608  
 .....info@catholicparishwhanganui.org.nz  
 Zonta Club of Wanganui Inc.....  
 .....wanganui@zonta.org.nz  
 Ministry of Education Learning support.....06 349 6300  
 .....Enquiries.Wanganui@education.govt.nz



**Immigration &  
Tax Consultant Ltd**  
136-7 Anzac Pde, Whanganui

### For all your Immigration needs:

Skilled Migrants, Student Visa, Work  
Visas, Visitor Visas, Investors, Long Term  
Business Visas, Entrepreneur, Family  
Categories, Guardian Visas, Section 61,  
IPT Appeals.

### FOR FREE APPRAISAL:

Please ring to make an appointment

**Tax: Small Business GST  
& Tax Returns**

**Phone: 06 3438128 / 06 3431031  
/ 021 2133274**

**admin@rivercityimmigration.co.nz**

**www.rivercityimmigration.co.nz**



**Mr V. Prasad**  
**EXPERIENCED,  
QUALIFIED & LICENCED  
IMMIGRATION ADVISER**



Become an **AVIATOR** ...  
join the Club



Modern Flight Training tailored to YOU!

contact us **06 345 0914**

info@wanganuiaeroclub.co.nz www.wanganuiaeroclub.co.nz







Come see our latest  
subdivision in off the end  
of Surrey and Chester Rd,  
sections for sale now!



**Visit our show home.**

**36 Tirimoana Place Otamatea,  
Whanganui**

**[keryn@bosshomes.co.nz](mailto:keryn@bosshomes.co.nz)**

**[Bosshomes.co.nz](http://Bosshomes.co.nz)**



# 2024 Enrolments Open

- Carpentry L3
- Agricultural L3
- Animal Care L3
- Rural Animal Technology L5

ENROL  
NOW!!



**TRAINING**  
FOR INDUSTRY  
CHALLENGE YOUR FUTURE | WHAKAAEHIA TO WERO

[www.agctraining.co.nz](http://www.agctraining.co.nz) 0800 348 8215

# WHANGANUI PRIDE WEEK 2024

**FEB 24 - MAR 2**

[pridewhanganui.co.nz/prideweek](http://pridewhanganui.co.nz/prideweek)



# Health and wellbeing

*These details were provided to Community House by Whanganui community organisations and were correct at December 2023. Please be aware that contact details may change. If you would like your organisation included on the Community House database, or need to update your organisation's contact details, please call 06 347 1084 or visit: [communityhouse.org.nz](http://communityhouse.org.nz)*

*Community House is not responsible for incorrect or out-of-date information.*

Age Concern Whanganui Inc..... 06 345 1799  
..... [info@acwhanganui.org.nz](mailto:info@acwhanganui.org.nz)  
Al-Anon Family Support Group..... 0508 425 266  
Alcoholics Anonymous..... 0800 229 6757 / 021 525 279  
..... [aawanganui@gmail.com](mailto:aawanganui@gmail.com)  
Allergy ADHD Whanganui..... 06 345 8393  
..... [allergyadhd@gmail.com](mailto:allergyadhd@gmail.com)  
Alopecia Manawatu & Whanganui..... 06 344 7427  
..... [manawatu.whanganui.alopecia@hotmail.com](mailto:manawatu.whanganui.alopecia@hotmail.com)  
Alzheimers Whanganui Inc 06 345 8833 / 027 266 3757  
..... [admin@alzheimerswhanganui.org.nz](mailto:admin@alzheimerswhanganui.org.nz)  
Arthritis New Zealand..... 0800 663 463  
..... [info@arthritis.org.nz](mailto:info@arthritis.org.nz)  
Aspire to Retire..... 027 249 8783  
..... [jaclynaston@gmail.com](mailto:jaclynaston@gmail.com)  
Association of Blind Citizens ABC..... 06-343 3117  
Autism New Zealand Inc Whanganui Branch..... 0800  
AUTISM (0800 288 476)..... [info@autismnz.org.nz](mailto:info@autismnz.org.nz)  
Balance Aotearoa..... 06 345 4488 / 021 262 8370  
..... [info@balancewhanganui.org.nz](mailto:info@balancewhanganui.org.nz)  
Birthright Whanganui Inc.....  
..... 022 037 5081 / 06 347 1770 / 021 0844 4027  
..... [admin@birthrightwg.co.nz](mailto:admin@birthrightwg.co.nz)  
Blind Low Vision NZ (Royal NZ Foundation of the Blind)  
..... 0800 24 33 33  
..... [info@blindlowvision.org.nz](mailto:info@blindlowvision.org.nz)  
Brain Injury Whanganui..... 06 347 9721  
..... [laison.whanganui@brain-injury.org.nz](mailto:laison.whanganui@brain-injury.org.nz)  
Breast Cancer Foundation.....  
..... 09 304 0766 / 0800 902 732  
..... [info@bcf.org.nz](mailto:info@bcf.org.nz)  
Cancer Society..... 06 348 7402  
..... [enquiries.wgi@cancercd.org.nz](mailto:enquiries.wgi@cancercd.org.nz)  
Car Seat Technician..... 027 239 5608  
..... [little.buds@xtra.co.nz](mailto:little.buds@xtra.co.nz)  
CCS Disability Action Whanganui.....  
..... 06 347 1176 / 0800 227 2255  
..... [whanganui@ccsdisabilityaction.org.nz](mailto:whanganui@ccsdisabilityaction.org.nz)  
Cerebral Palsy Society of New Zealand.....  
..... 0800 503 603 extn 1  
..... [cpsociety@cpsociety.org.nz](mailto:cpsociety@cpsociety.org.nz)  
Child Cancer Foundation... 09 366 1270 / 0800 424 453  
..... [info@childcancer.org.nz](mailto:info@childcancer.org.nz)  
Choices NZ..... 0800 723 154  
..... [kate.brookshire@choicesnz.org.nz](mailto:kate.brookshire@choicesnz.org.nz)  
Coeliac New Zealand..... 09 414 7467  
..... [admin@coeliac.org.nz](mailto:admin@coeliac.org.nz)  
Community Mental Health and Addiction Services.....  
..... 06 348 1234 / 06 348 1207  
Compassionate Friends Bereaved Parents Support Group.....  
..... 06 344 3345  
..... [marshkandb@gmail.com](mailto:marshkandb@gmail.com)  
Continence NZ..... 0800 650 659  
..... [info@continence.org.nz](mailto:info@continence.org.nz)  
Counselling Caboodle..... 021 026 894 86  
..... [info@counsellingcaboodle.co.nz](mailto:info@counsellingcaboodle.co.nz)  
Crohn's and Colitis New Zealand..... 0800 275 423  
..... [info@crohnsandcolitis.org.nz](mailto:info@crohnsandcolitis.org.nz)  
Cystic Fibrosis Central Districts..... 021 1968 050  
..... [bev@cfnz.org.nz](mailto:bev@cfnz.org.nz)  
Diabetes New Zealand Whanganui Branch. 0800 342 238  
..... email through the website  
Dyslexia Foundation of New Zealand.....  
..... 03 349 6161 / 0275 449 496  
..... [info@dfnz.org.nz](mailto:info@dfnz.org.nz) / [guy@dfnz.org.nz](mailto:guy@dfnz.org.nz)  
ECS Connections Ltd..... 06 759 4999 / 027 660 7770  
..... [grant.langley@ecsnet.co.nz](mailto:grant.langley@ecsnet.co.nz)  
Epilepsy New Zealand Association.....  
..... 06 757 5644 / 027 221 3657 / 0800EPILEPSY  
..... [taranaki@epilepsy.org.nz](mailto:taranaki@epilepsy.org.nz)

Family Planning Clinic..... 06 347 9415 / 0800 372 546  
..... [healthpromotionwhanganui@familyplanning.org.nz](mailto:healthpromotionwhanganui@familyplanning.org.nz)  
Family Works Whanganui..... 06 345 6681  
..... [familyworks-whanganui@psc.org.nz](mailto:familyworks-whanganui@psc.org.nz)  
Fetal Alcohol Spectrum Disorder (FASD) Support Group...  
..... 021 0224 3078  
..... [nagzalot@gmail.com](mailto:nagzalot@gmail.com)  
Grandparents Raising Grandchildren Support Group Whanganui...  
..... 0800 472 637  
..... [whanganui@grg.org.nz](mailto:whanganui@grg.org.nz)  
Hearing Services Whanganui. 06 347 9743 / 021 263 1832  
..... [support@whanganuihearing.co.nz](mailto:support@whanganuihearing.co.nz)  
Home and Community Health Association... 04 472 3196  
..... [info@hcha.org.nz](mailto:info@hcha.org.nz)  
Hospice Whanganui..... 06 349 0080  
..... [admin@hospicewhanganui.org.nz](mailto:admin@hospicewhanganui.org.nz)  
Huntington's Disease Association..... 021 344 445  
..... [sjgilmour.wellingtonhda@gmail.com](mailto:sjgilmour.wellingtonhda@gmail.com)  
IDEA Services..... 06 349 2650  
..... [whanganui.administration@idea.org.nz](mailto:whanganui.administration@idea.org.nz)  
IHC Association Committee Whanganui.....  
..... [manager.whanganui@brain-injury.org.nz](mailto:manager.whanganui@brain-injury.org.nz)  
Jigsaw Whanganui..... 06 345 1636  
..... [admin@jigsawwhanganui.org.nz](mailto:admin@jigsawwhanganui.org.nz)  
Kidney Support Group Whanganui..... 06 345 3373  
..... [gbullock@xtra.co.nz](mailto:gbullock@xtra.co.nz)  
Kotuku Foundation Assistance Animals Aotearoa.....  
..... 021 298 4741... [kotuku.foundation.aaa@outlook.co.nz](mailto:kotuku.foundation.aaa@outlook.co.nz)  
Leukaemia and Blood Cancer New Zealand.....  
..... 0800 15 10 15  
..... [info@leukaemia.org.nz](mailto:info@leukaemia.org.nz)  
Living Well with Diabetes - Rapu te Oranga.....  
..... 029 222 5388  
..... [mhirini@wrhn.org.nz](mailto:mhirini@wrhn.org.nz)  
Macular Degeneration NZ..... 0800 622 852  
..... [info@mdnz.org.nz](mailto:info@mdnz.org.nz)  
Meals on Wheels - Whanganui..... 06 348 3106  
Men's Grief Support Group..... 06 344 3345  
..... [marshkandb@gmail.com](mailto:marshkandb@gmail.com)  
Mental Health and Wellbeing Support.....  
..... 06 345 3301 / 027 318 9571  
..... [office@mhws.co.nz](mailto:office@mhws.co.nz)  
Mental Health Assessment and Home Treatment Team MHAHT.....  
..... 0800 653 358  
Mindfulness..... 021 062 2120  
MIST Centre..... 022 679 5406  
..... [mist@xtra.co.nz](mailto:mist@xtra.co.nz)  
Mother Lead Breastfeeding Support..... 021 135 9948  
Muscular Dystrophy Association..... 0800 800 337  
..... [info@mda.org.nz](mailto:info@mda.org.nz)  
Narcotics Anonymous..... 0800 628 632  
..... [cascc@nzna.org](mailto:cascc@nzna.org)  
National Heart Foundation Mid Central..... 06 358 7745  
..... [sallyd@heartfoundation.org.nz](mailto:sallyd@heartfoundation.org.nz)  
National Travel Assistance Scheme.....  
..... 0800 855 066 option 2  
..... [travel@moh.govt.nz](mailto:travel@moh.govt.nz) /  
..... [claimsmanagement@health.govt.nz](mailto:claimsmanagement@health.govt.nz)  
Nationwide Health & Disability Advocacy Service.....  
..... 0800 555 050  
..... [advocacy@advocacy.org.nz](mailto:advocacy@advocacy.org.nz)  
Neil Pedley and Associates Counsellor.....  
..... 06 348 2201 / 022 010 2858  
..... [neilpedley@xtra.co.nz](mailto:neilpedley@xtra.co.nz)  
Neurological Foundation of NZ Inc. 09 309 7749 / 0508  
BRAINS (272 467)..... [info@neurological.org.nz](mailto:info@neurological.org.nz)  
New Zealand Down Syndrome Association.....  
..... 0800 693 724  
..... [neo@nzdsa.org.nz](mailto:neo@nzdsa.org.nz)

New Zealand Williams Syndrome Association.....  
..... [kiaora@williams-syndrome.org.nz](mailto:kiaora@williams-syndrome.org.nz)  
NZ Red Cross Society..... 06 345 3761 / 027 249 2881  
..... [wanganui.branch@redcross.org.nz](mailto:wanganui.branch@redcross.org.nz) /  
..... [firstaid@redcross.org.nz](mailto:firstaid@redcross.org.nz)  
Omahanui Whanganui Special Care Unit ... 06 345 3500  
..... [oscu.wanganui@omahanui.co.nz](mailto:oscu.wanganui@omahanui.co.nz)  
Open Home Foundation..... 06 345 7043  
..... [whanganui@ohf.org.nz](mailto:whanganui@ohf.org.nz)  
Parent to Parent - Manawatu..... 022 421 6362  
..... [janinem@parent2parent.org.nz](mailto:janinem@parent2parent.org.nz)  
Parkinsons NZ..... 0800 473 4636  
..... [educator.manawatu@parkinsons.org.nz](mailto:educator.manawatu@parkinsons.org.nz)  
Pathways Whanganui..... 06 348 8198  
..... [whanganui@pathways.co.nz](mailto:whanganui@pathways.co.nz)  
Pregnancy Counselling Services..... 0800 773 762 /  
0800PREGNANT..... [help@pregnancycounselling.org.nz](mailto:help@pregnancycounselling.org.nz)  
Problem Gambling Foundation of New Zealand.....  
..... 0800 664 262 / Text 5819  
..... [help@pgf.nz](mailto:help@pgf.nz)  
Prostate Cancer Support Group.....  
..... 027 555 0338 / 06 348 7115  
..... [wanganui@prostate.org.nz](mailto:wanganui@prostate.org.nz)  
Public Health Centre, C/-WDHB..... 06 348 1234  
..... [PHC.Admin@wdhb.org.nz](mailto:PHC.Admin@wdhb.org.nz)  
Relapse Prevention group..... 06 345 4488  
Royal New Zealand Plunket Trust - Whanganui.....  
..... 0800 184 803  
..... [manwangadmin@plunket.org.nz](mailto:manwangadmin@plunket.org.nz)  
SANDS..... 021 038 4596  
..... [info@sands.org.nz](mailto:info@sands.org.nz)  
Shaw House Seniors..... 0274 854 286  
..... [colourdesigngroup@gmail.com](mailto:colourdesigngroup@gmail.com)  
Shine Domestic Abuse Helpline.....  
..... 0508 744 633 / 09 815 4601  
..... [enquiries@2shine.org.nz](mailto:enquiries@2shine.org.nz)  
Sommerville Disability Support Services..... 06 345 0566  
..... [info@sommerville.org.nz](mailto:info@sommerville.org.nz)  
SPELD NZ - Central Region.....  
..... 0800 773 536 Ext 1, then Ext 2  
..... [Central@speld.org.nz](mailto:Central@speld.org.nz)  
Stroke Central Region..... 06 345 1370 / 028 8500 0470  
..... [whanganui@stroke.org.nz](mailto:whanganui@stroke.org.nz)  
Supergrans Mentoring.....  
..... 06 354 3804 / 022 583 2994  
..... [admin@sgmanawatu.org.nz](mailto:admin@sgmanawatu.org.nz)  
Support Group for Those Bereaved by Suicide.....  
..... 06 349 0202  
..... [admin@dempseyforrest.co.nz](mailto:admin@dempseyforrest.co.nz)  
Tai Chi for Health..... 022 658 6311  
..... [kevin.miriamaf@gmail.com](mailto:kevin.miriamaf@gmail.com)  
Tautoko Services..... 021 705 452  
..... [info@tautoko.org.nz](mailto:info@tautoko.org.nz) carol@options.org.nz  
Te Oranganui Iwi Health Authority..... 06 349 0007  
..... [support@teoranganui.co.nz](mailto:support@teoranganui.co.nz)  
Te Oranganui Medical Centre..... 06 349 0037  
..... [support@teoranganui.co.nz](mailto:support@teoranganui.co.nz)  
Te Oranganui Trust Maori Mental Health and Addictions Service  
06 3490007..... [support@teoranganui.co.nz](mailto:support@teoranganui.co.nz)  
Te Puna Wai Ora Charitable Trust..... 022 127 1189  
..... [ekatene7@gmail.com](mailto:ekatene7@gmail.com)  
Te Whariki Manaki o Tatou Trust..... 020 400 30246  
The Osteoporosis New Zealand Trust..... 04 499 4862  
..... [info@osteoporosis.org.nz](mailto:info@osteoporosis.org.nz)  
Tupoho Social Services Trust..... 06 345 2042  
..... [tina@tupoho.co.nz](mailto:tina@tupoho.co.nz)  
Wanganui Blind & Partially Blind Craft Group Inc.....  
..... 06 348 4407  
Wanganui Foster Care Association..... 027 459 4349  
..... [wanganuifostercareassoc.inc@gmail.com](mailto:wanganuifostercareassoc.inc@gmail.com)



Wanganui Hospital Chaplaincy .....027 233 4557  
 Wanganui Multiple Sclerosis Society..... 06 345 2336 / 027 381 2555  
 .....mswanganui@xtra.co.nz  
 Wanganui Osteoporosis Support Group .....06 345 6643  
 Wanganui Ostomy Society Inc.....021 041 8602  
 .....Franwylie49@xtra.co.nz  
 Wanganui People First.....mail@peoplefirst.org.nz  
 Wanganui Unique Childrens Support Group.....022 494 8274 / 027 348 0106  
 .....petergs@infogen.net.nz / suekenny18@gmail.com  
 Wellstop: Whanganui/South Rangitikei Region.....04 566 4745  
 Whanganui Epilepsy Support Group.....0800 37 45 37 / 027 221 3657  
 .....taranaki@epilepsy.org.nz

Whanganui Equine Therapeutic Centre.....027 342 9826  
 .....wanganui@rda.org.nz  
 Whanganui Family Violence Intervention Network.....06 347 7992  
 .....admin@jigsawwhanganui.org.nz  
 Whanganui Hospital Equipment Department.....06 348 1246  
 .....loan.equipment@wdhb.org.nz  
 Whanganui People's Centre.....06 345 8656  
 .....wpcentre1@gmail.com  
 Whanganui Regional Health Network.....06 348 0109  
 .....info@wrhn.org.nz  
 Whanganui Safe & Free.....06 343 3416 / 027 345 0559  
 .....administration@whanganuisafe.org.nz  
 Whanganui Stop Smoking Service.....0800 200 249 06 349 2360  
 .....sss@wrhn.org.nz

Women's Refuge Whanganui Crisis.....06 344 2204 / 0800 REFUGE (0800 733 843)  
 .....admin@refugewhanganui.org.nz  
 Your Way - Kia Roha.....0800 758 700  
 .....whanganui@yourwaykiaroha.nz  
 Prostate Cancer Foundation.....0800 477 678  
 .....infoservice@prostate.org.nz  
 Parent to Parent - NZ.....0508 236 236  
 .....national@parent2parent.org.nz  
 Kidney Health New Zealand.....0800 543 639  
 .....info@kidney.health.nz  
 Cystic Fibrosis New Zealand.....0800 651 122  
 .....info@cfnz.org.nz  
 Accident Compensation Corporation ACC 0800 101 996  
 .....providerhelp@acc.co.nz



A view of South Beach with the Whanganui River on the right

## Rivercity

ULTRASOUND



**OUR ULTRASOUND SERVICES INCLUDE:**

- Pregnancy
- Upper Abdominal
- Renal
- Pelvic
- Musculoskeletal
- Vascular
- Small Parts

**NO ACC & PREGNANCY SURCHARGE**

**Contact Us**  
 We are conveniently located at: 26 Bell Street, Whanganui  
 Phone: 06 281 3182 • [www.rivercityultrasound.co.nz](http://www.rivercityultrasound.co.nz)



Geoff's



MODEL SHOP

Ph: (06) 343 1520

Open Wed - Fri 10am - 4pm,  
Sat 10am - 2pm

10 Kitchener Street, Whanganui East



# Sports and recreation

These details were provided to Sport Whanganui and Community House by sporting groups and were correct at December 2023. Please be aware that contact details may change. If you would like your organisation included on Sport Whanganui and/or Community House databases, or need to update your organisation's contact details, please call Sport Whanganui on 06 349 2300 / Community House on 06 347 1084.

Sport Whanganui and Community House are not responsible for incorrect or out-of-date information on these pages.

**Air Sports** Sport Aircraft Association...06 344 6059  
.....pgfairclough@xtra.co.nz  
Wanganui Aero Club Inc.....06 345 0914  
.....info@wanganuiaeroclub.co.nz

**Aquarobics** Aquarobics.....06 349 0113  
.....splashcentre@splashcentre.co.nz

**Archery** Marangai Archery Club .....027 216 3741  
.....secretary@marangaiarcheryclub.co.nz  
Wanganui Archery Club.....027 956 4422  
.....archerywanganui@gmail.com

**Athletics** Athletics Wanganui .....021 421 145  
.....alec.mcnab@collegiate.school.nz  
.....Wanganui Athletic Football Club  
.....027 738 6948  
.....whanganuiathleticfc@gmail.com

**Badminton** Badminton Whanganui Incorporated.....  
022 308 7612b.wanganui@outlook.co.nz

**Basketball** Basketball Whanganui.....027 937 3007  
.....whanganuibasketballassociation@gmail.com

**Bowls** Bowls Wanganui Inc.....  
.....06 345 3696 / 027 280 7227  
.....bowlswang@gmail.com  
Bowls Wanganui Umpires Association.....  
.....06 262 8146  
Durie Hill Bowling Club .....021 269 4178  
.....duriehillbowlingclub@gmail.com  
Gonville - Castlecliff Bowling Club.....  
.....06 345 7407  
.....goncliffbc@gmail.com  
Laird Park Bowling Club.....06 347 8808  
.....airdparkbc@gmail.com  
Rapanui Bowling Club.....027 223 6808  
.....jennyandkings@xtra.co.nz  
St John's Indoor Bowling Club.....  
06 348 0082 .....maccala@xtra.co.nz  
Vision Impaired Indoor Bowling Club.....  
.....027 502 2247/021 122 2551  
Wanganui Bowling Club Inc.....  
.....06 345 7086 021 050 6186  
.....wanganuibowling@xtra.co.nz  
Wanganui East Bowling Club.....  
.....343 8223/027 304 9571  
.....wangeastbowls@gmail.com  
Wanganui Indoor Bowlers Association.....  
.....06 344 2894 / 027 419 3251  
.....shackett@xtra.co.nz

**Cricket** Cricket Whanganui Inc.....027 247 0545  
.....pete@cricketwanganui.co.nz  
United Cricket Club.....  
.....027 858 1992  
Wanganui Marist Cricket Club.....  
.....wanganuimaristcricket@gmail.com  
Wanganui Croquet Club Inc.06 344 7353  
.....rowdyandmarg@xtra.co.nz

**Cycling** Wanganui Cycling Club.....021 396 540  
.....cyclingwhanganui@gmail.com

**Cyclocross** Awa Cross.....  
.....cath@cyclesport.co.nz

**Dance** Ceroc Dance Wanganui.....  
.....06 345 7401 / 021 0205 4038  
.....lizfrith01@gmail.com  
River City Dance & Leisure Incorporated.  
.....021 02 054038 / 06 345 7401  
.....lizfrith01@gmail.com  
River Rockers Whanganui.....  
.....06 343 9554 / 021 060 9974  
.....riverrockerswhanganui@gmail.com

Sharyn Underwood School of Dance and  
Ready Set Dance .....  
.....06 345 3211 / 021 063 9612  
.....jazzworld@xtra.co.nz  
Shirley McDouall School of Dance.....  
.....021 149 3849  
.....mktate@gmail.com  
Wanganui Amateur Dancesport Club .....  
.....06 347 2415  
.....prueandgraeme@xtra.co.nz  
Whanganui Ballet and Dance Academy...  
.....027 237 9176  
anna@whanganuiballet.co.nz

**Darts** Wanganui Darts League Incl .....  
.....06 3444 840  
.....landbhyde@xtra.co.nz

**Disc Golf** Disc Golf .....027 952 5374  
.....darren3107@gmail.com

**Dog Trials** Mangamahu Dog Trial Club.....  
.....06 342 2871  
.....mangamahudogtrialclub@outlook.com  
Paparangi Sheep Dog Trial Club.....  
.....06 342 1842  
Parapara-Makirikiri Sheep Dog Trial Club  
06 342 7508..brenda.dog@inspire.net.nz  
Wanganui Dog Trial Centre. 06 385 4243  
.....tanupara@inspire.net.nz

**Equestrian** Castlecliff Family Riding Club .....  
.....0274 505 741  
Central District Carriage Driving Association...  
.....06 323 9534  
.....pandicochranch@farmside.co.nz  
Dressage Central Districts .....  
.....dressagecentraldistricts@gmail.com  
Rodeo Assn of New Zealand - Waimarino  
027 240 1090...c\_d\_maclea@xtra.co.nz  
Trotting Club - Wanganui.....  
06 342 7771 .....wanganuitc@xtra.co.nz /  
wanganuitrottingclub@gmail.com  
Nitro Equine .....021 930 950  
.....info@nitroequine.co.nz  
Wanganui Jockey Club Inc .....  
.....06 345 3968 / 027 423 6735  
.....info@wjcc.co.nz  
Wanganui Race Horse Owners Ass (Inc).  
06 345 3968 027 236 735info@wjcc.co.nz  
Surfcasting and Angling Club Wanganui.  
.....06 344 5745  
Wanganui Manawatu Sea Fishing Club  
Incorporated.....  
.....027 504 0030 / 06 344 4686  
.....dhealey9999@gmail.com

**Fitness** Her Fitness Ltd.....06 348 9121  
.....results@herfitness.co.nz

**Football** Central Football .....021 1083 961  
.....danah@centralfootball.co.nz  
Marist Football Club .....027 939 3774  
.....maristfc@outlook.co.nz /  
.....maristjuniors@outlook.com  
Wanganui City Football Club.....  
.....027 846 1412  
.....blairdavidson72@gmail.com  
Wanganui Football Referees .....  
.....027 222 6024  
.....tyrone\_kemp@wanganuirugby.co.nz

**Gliding** Gliding Manawatu.....  
.....027 223 3243 / 027 939 3920  
(Weekends) contactus.wmgc@gmail.com

Hang Gliding and Paragliding Club.....  
.....0274 474 117  
.....rwinduss@yahoo.com

**Golf** Castlecliff Golf Club.....06 344 4554  
.....castlecliffgolfmarketing@gmail.com  
Castlecliff Ladies Golf Club.06 344 4554  
.....admin@castlecliffgolf.co.nz  
Manawatu/Wanganui Golf Inc.....  
.....0274 500 334  
.....mwgao@sportmanawatu.org.nz  
Rangatira Golf Club .....  
.....06 322 9859 / 027 322 9850  
.....marykenn@hotmail.co.nz  
Tawhero Golf Club.....06 344 5808  
.....tawherogolfclub@gmail.com  
Wanganui Golf Club .....06 349 0559  
.....manager@wanganuigolfclub.co.nz  
Whanganui Golf Croquet Club.....  
.....06 345 2885

**Greyhound Racing** Wanganui Greyhound Club Inc.....  
06 345 6794. hattrick.raceway@xtra.co.nz

**Gymnastics** Wanganui Boys & Girls Gym Club.....  
.....06 345 8670  
.....admin@wanganuigymclub.co.nz

**Hockey** Castlecliff Women's Hockey .....  
06 342 9788..keithannestone@xtra.co.nz  
Collegians Hockey Club .....06 3477553 /  
0276196322.....sharynpearce@gmail.com  
Hockey Wanganui Inc .....  
.....hockeywhanganui2022@gmail.com  
TCOB Hockey Club .....  
.....06 345 9194 / 021 104 4824  
.....wayne.steele@vtnz.co.nz  
Wanganui Lightning United Inline Hockey  
Club Inc .....022 361 4739 / 06 344 3356  
.....wanganuilightningihc@gmail.com

**Hunting / Shooting sports** .....Hunting and Outdoors Club Wanganui  
.....021 204 1480  
RSA Target Shooting Wanganui.....  
.....06 344 4924  
.....gordonandela@xtra.co.nz  
Smallbore Outdoor Rifle Club - Wanganui.  
.....06 344 4924  
.....gordonandela@xtra.co.nz  
Smallbore Rifle Club - Westmere.....  
.....06 347 7099  
.....sid.jude@xtra.co.nz  
Target Shooting - Wanganui.....  
027 292 8787 .....paul.turner@tsv.net.nz  
Wanganui Pistol Club Inc .....  
.....027 511 0795 / 021 035 6600  
.....wanganuipistolclub@hotmail.com  
Wanganui Rangitikei Clay Target Club  
.....021 024 5591  
.....wanganuirc@xtra.co.nz

**Jetsprints** Shelterview Jetsprint Park.....  
.....0274 415 608 / 06 342 5502  
.....richju@inspire.net.nz

**Martial Arts** Martial Arts - Wanganui Kyokushin Karate Club  
.....021 345 718  
.....peter@ethan.co.nz  
Martial Arts - Zen Do Kai.....  
.....06 345 5402 / 021 035 1361  
.....jcleatham@gmail.com  
New Zealand Jiu Jitsu Academy .....  
.....0210 274 6291  
.....shanoncasson@nzjjacademy.com



|  |  |
|--|--|
| NZ Eagle Spirit Jujitsu Club .....                           | 021 0278 4777 / 06 347 7854              |
| .....nzsci@hotmail.com.nz                                    |  |
| Red Boat Kung Fu.....  | 022 510 8215                             |
| .....RBKF.wanganui@gmail.com                                 |  |
| Rivercity Boxing Club .....                                  | 027 368 2306                             |
| .....tofa-ten@xtra.co.nz                                     |  |
| Wanganui Judo Club/Martial Arts Centre .....                 | 0274 457 882                             |
| .....watson_security@xtra.co.nz                              |  |
| Wanganui Martial Arts Centre .....                           | 027 445 7882 / 06 347 7920               |
| .....big.judo@hotmail.com                                    |  |
| <b>Masters Games</b> .....NZ Masters Games - Whanganui       |  |
| .....heather@sportwhanganui.co.nz                            |  |
| <b>Motor Sport</b> Cemetery Circuit Wanganui                 |  |
| (Boxing Day Motorcycle Races) .....                          | 021 212 6873                             |
| .....admin@cemeterycircuit.co.nz                             |  |
| Wanganui Motor Cycle Club .....                              | 021 130 9443                             |
| .....wmccmx@gmail.com  |  |
| Wanganui Stockcar and Speedway Club Inc .....                | secretary@oceanviewspeedway.co.nz        |
| <b>Mountain biking</b> .....Whanganui Mountain Biking Club   |  |
| .....06 345 5500   |  |
| .....wanganuimtbcb@gmail.com                                 |  |
| <b>Multisport / Triathlon</b> .....Whanganui Multisport Club |  |
| .....022 478 1208  |  |
| .....whanganuimultisport@gmail.com                           |  |
| <b>Netball</b> Kaierau Netball .....                         | 06 344 6843                              |
| .....kaieraunetball@hotmail.com                              |  |
| Netball Club - Marist .....                                  | 022 620 1272                             |
| .....jessiemadams1979@hotmail.com                            |  |
| Netball Club - Tech .....                                    | 027 568 5687                             |
| .....technetballwhanganui@gmail.com                          |  |
| Netball Club - Ratana.....                                   | 027 568 5687                             |
| Netball Wanganui Incorporated .....                          | 06 281 3625                              |
| .....netball@netballwhanganui.co.nz                          |  |
| <b>Petanque</b> Petanque Adjunct Wanganui East Club ...      | 06 342 7542 / 06 561 4452 / 027 386 6895 |
| .....wanganui-eastclub@gmail.com                             |  |
| <b>Pickleball</b> Pickleball.....                            | 022 083 5889                             |
| .....rivercity.pickleball@gmail.com                          |  |
| <b>Ratana Sports Club</b> .....Ratana Sports Club            |  |
| .....027 568 5687  |  |
| <b>Regional Sports Trust</b> .....Sport Whanganui            |  |
| .....06 349 2300   |  |
| .....info@sportwhanganui.co.nz                               |  |
| <b>Rowing</b> Billy Webb Challenge.....                      | 027 272 7953                             |
| .....billywebbchallenge@gmail.com                            |  |
| Aramoho Wanganui Rowing Club .....                           | 0274 892 498 / 06 213 5718               |
| .....awrowing@gmail.com                                      |  |
| Union Boat Club.....   | 028 428 5664                             |
| .....general@unionboatclub.co.nz                             |  |

|  |                                      |
|--|--------------------------------------|
| Whanganui Rowing Assn ....                               | 027 272 7953                         |
| .....whanganuirowing@gmail.com                           |                                      |
| <b>Rugby</b> Rugby Club - Counties .....                 | 06 342 5512 / 027 660 6887           |
| .....parakino@farmside.co.nz                             |                                      |
| Rugby Club - Hunterville .....                           | 021 272 2626                         |
| .....huntervillerugby@yahoo.co.nz /                      | sccttparkes@gmail.com                |
| Rugby Club - Kaierau.....                                | 06 344 6843                          |
| .....info@kaierau.co.nz                                  |                                      |
| Rugby Club - Marton.....                                 | 027 738 3457                         |
| .....m.jones_construction@outlook.com                    |                                      |
| Rugby Club - Pirates.....                                | 06 3455994                           |
| .....wanganuipiratesrugby@outlook.com                    |                                      |
| Rugby Club - Utiku Old Boys.....                         | 027 390 6178                         |
| .....karlferal91@gmail.com                               |                                      |
| Rugby Club - Wanganui and Old Boys ....                  | 06 342 5852 / 06 347 9133            |
| .....thetwocrowes@gmail.com                              |                                      |
| Rugby Club - Wanganui Marist .....                       | 027 448 1035 / 06 3450 240           |
| .....wanganuimarist@xtra.co.nz /                         | wendy.home@xtra.co.nz                |
| Wanganui Rugby Referee Association ....                  | info@whanganuirugby.co.nz            |
| Whanganui Rugby Football Union .....                     | 06 349 2313 / 027 285 9010           |
| .....info@wanganuirugby.co.nz /                          | bridget.belsham@whanganuirugby.co.nz |
| <b>Rugby League</b> .....Boxon Sports Academy            |                                      |
| 06 344 4874 / 027 257 1707                               |                                      |
| .....lisa@nzrl.co.nz                                     |                                      |
| <b>Rugby Union</b> Wanganui Tech Sports Club Inc.....    | 06 343 8383 / 021 058 2593           |
| .....ranieropm@gmail.com                                 |                                      |
| <b>Running/Walking</b> .....                             |                                      |
| Walking Group - Club Gold Whanganui...                   | 06 349 2325                          |
| .....deb@sportwhanganui.co.nz                            |                                      |
| Wanganui Harrier Club .....                              | 06 343 1269                          |
| .....wanganuiharrierclub@gmail.com                       |                                      |
| Whanganui Riverbank parkrun .....                        | whanganuiriiverbank@parkrun.com      |
| Club Gold.....   | 06 349 2325                          |
| Sailing Wanganui.....                                    | secretary@sailingwanganui.co.nz      |
| <b>Skating</b> Wanganui Inline Speed Skating Club .....  | 06 348 8366 / 027 446 2231           |
| .....garyz@xtra.co.nz                                    |                                      |
| Wanganui Roller Skating Club.....                        | 021 023 94665 / 06 345 3381          |
| .....warscrink@gmail.com                                 |                                      |
| <b>Snow Sports</b> Wanganui Ski and Snowboard Club ..... | 07 892 3870                          |
| .....info@wssc.co.nz                                     |                                      |
| <b>Softball</b> Braves Softball.....                     | braveswhanganui@gmail.com            |

|  |                              |
|--|------------------------------|
| Aces Softball .....  | 027 297 8346                 |
| .....whanganuiaces@gmail.com                                 |                              |
| Whanganui Softball Association Incorporated .....            | 027 426 5492 021 674 624     |
| .....whanganuisoftball@gmail.com                             |                              |
| <b>Special Olympics</b> .....Wanganui Special Olympics       |                              |
| .....022 018 7535  |                              |
| .....wanganui@specialolympics.org.nz                         |                              |
| <b>Squash</b> Rivercity Squash Club.....                     | 021 413 315                  |
| .....rivercitysquash@yahoo.co.nz                             |                              |
| Whanganui Squash Club.....                                   | 06 345 3680                  |
| .....wanganuisquash@inspire.net.nz                           |                              |
| <b>Stadium Trust</b> .....Wanganui Community Sports Centre   |                              |
| Inc. ....  | 06 345 2102 / 027 201 2651   |
| .....comsports@xtra.co.nz                                    |                              |
| <b>Surf Lifesaving</b> .....Surf Lifesaving NZ               |                              |
| .....04 560 0383   |                              |
| .....communications@surflifesaving.org.nz                    |                              |
| <b>Swimming</b> Splash Centre - Aquajet Swim School .....    | 06 349 2505                  |
| .....aquajet@splashcentre.co.nz                              |                              |
| Splash Centre - Indoor Pool.....                             | 06 349 0113                  |
| .....splashcentre@splashcentre.co.nz                         |                              |
| Whanganui Swim Club.....                                     | whanganuiswimclub@gmail.com  |
| <b>Table Tennis</b> Table Tennis Association - Wanganui..... | 027 447 4312                 |
| .....purvisjan@hotmail.com                                   |                              |
| <b>Tennis</b> Tennis Whanganui.....                          | 027 447 7720                 |
| .....tenniswanganui@gmail.com                                |                              |
| <b>Touch</b> Awa Touch.....                                  | 022 364 7852                 |
| .....awatouch@gmail.com                                      |                              |
| Touch Wanganui.....  | 021 233 0462                 |
| .....touchwanganui@gmail.com                                 |                              |
| Touch Rugby Club - Kaierau .....                             | 06 344 6843                  |
| Fullsend.....  | 027 608 1232                 |
| .....fullsendwhanganui@gmail.com                             |                              |
| <b>Tramping</b> Wanganui Tramping Club.....                  | 06 347 9177 / 021 262 7066   |
| membership@whanganuitramping.org.nz                          |                              |
| <b>Volleyball</b> Rivercity Volleyball .....                 | 021 744 565                  |
| .....mkj@xtra.co.nz  |                              |
| <b>Waka Ama</b> Te Ringa Miti Tai Heke.....                  | trmthwakaama@gmail.com       |
| Whanganui River and Outrigger                                |                              |
| Canoe Club/ Waka Ama .....                                   | Via Facebook page            |
| <b>Water Skiing</b> Wanganui Water Ski Club ..               | 021 294 4283                 |
| .....kentandmelh@gmail.com                                   |                              |
| <b>Water Sports</b> Wanganui Motor Boat Club.....            | 027 316 3775                 |
| .....ward.furn@xtra.co.nz                                    |                              |
| <b>Wood chopping</b> Axemen's Club.....                      | 07 895 6094                  |
| .....centralaxemensassoc@gmail.com /                         | sharonstove.lereve@gmail.com |
| <b>Yoga</b> Yoga - Yoga Spirit .....                         | 021 135 3973                 |
| .....helloyogaspirit@gmail.com                               |                              |



Cooks Gardens



Looking to  
**buy or sell?**  
The answer is  
black and white.

**simsandco.nz**  
06 927 5142  
hello@simsandco.nz  
178 Victoria Ave, Whanganui 4500

**Sims & Co**  

---

ANDCO REALTY 16 LTD LICENSED REAA 2008 **REALTY**





New Zealand  
Glassworks

Te Whare Tūhura o Te Ao

[www.nzglassworks.com](http://www.nzglassworks.com)

### LEARN

Glass workshops from  
experts for beginners

### SHOP

Leading New Zealand  
Art Glass

### VIEW

Professional glass  
artists in the studio

NZG Gallery. Photo: Steve Caudwell

Open 7 Days  
10am - 4.30 pm

2 Rutland Street  
Whanganui, NZ

Tel. +64 6 9276803 | [info@nzglassworks.com](mailto:info@nzglassworks.com)



# Connecting you to friends and whanau, with daily flights to Auckland!

Flying Whanganui to Auckland daily.



Book your flights at  
[airchathams.co.nz](http://airchathams.co.nz)



**Your family  
in the sky**  
*to whanau i te rangi*