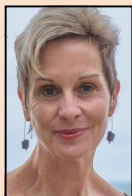


# Whanganui District Health Board

## Electing 7 Board Members

---

---



### **Lynne VINSEN**

#### **A Fresh Approach**

My principal place of residence is in the Whanganui District Health Board area.

I will provide a fresh governance approach. I do not have a medical background or experience in local government. I am a people focused person from a business background owning retail stores, with my husband Rob, throughout the Lower North Island. I am a Board member of Women's Network and Kid's Kitchen, a charity teaching healthy cooking options at Rutherford Intermediate. I have a sound understanding of the objectives and role of the board, a key responsibility is to monitor the performance of the organisation. We all know that the health dollar is stretched, but I won't support cuts to frontline community or hospital services. I will represent patients and patients' families, and ensure that their voice is heard at the highest levels. I will support initiatives that encourage people to take more responsibility for their own health, and support the families of people with high health or disability needs.

#### *Conflict of Interest Statement*

To the best of my knowledge and belief, I have no conflicts of interest with the Whanganui District Health Board at the date of my notice of consent to being nominated as a candidate for membership , and I do not believe that any such conflicts of interest are likely to arise in future.