



Shaping Wanganui
Have your say, korero mai...

Protected Trees



**Wanganui District Council
District Plan Review**

**Proposed Plan Change 31
Protected Trees**

Section 32 Report –

(September 2013)

District Plan

25.1 ISSUES

25.1.1 Protection of significant Trees

Trees that make up a part of Wanganui's history, culture, amenity or contain unique ecological value need to be identified and protected from development. Their removal or modification may result in a reduction in amenity and quality of Wanganui's environment.

25.2 OBJECTIVES

25.2.1 Tree protection

Recognition and protection of trees with significant historical, cultural, amenity or ecological value to the community.

25.3 POLICIES

25.3.2 Retention of Trees

To recognise and protect significant trees (or groups of trees) that contribute to the history, ecology, character or amenity for the Wanganui community as identified in Appendix B.

25.3.2 Protection of Trees

To manage land use and development to avoid, remedy or mitigate any adverse effect on protected trees.

25.3.3 Protected Tree Promotion

To promote the history, location and special features of significant trees to the public.

25.3.4 Length of Tree Protection

Protected Trees shall be retained for their natural life unless this would create an immediate risk to life or property.

25.3.5 Propagation of Trees

To recognise that trees have a finite lifespan and to require the re-planting of progeny in the same or related location, when a protected tree has reached the end of its life.

25.3.6 The removal of Protected Trees

Any application to modify or remove a Protected Tree shall be assessed against the following:

- a. Whether the tree is near the end of its natural lifespan or if the work will extend the life of the tree
- b. The ability to replant with off-spring from the tree with a root ball of no less than PB40 (note that some species have a higher requirement)
- c. How the location is to be cleared and restored after removal of the tree
- d. The historical, cultural, amenity or ecological value of the tree
- e. An independent Arborist* assessment on the condition of the tree and any works to be completed

- f. The mulching and definition of the extent of the root/drip line to prevent future damage to the tree or its replacement

25.5 METHODS

25.5.1 Protected Tree Database

Maintain a comprehensive database of protected trees using STEM, derived primarily from the 1988 Historic, Notable and Aesthetic Trees, 1993 Protected Tree Inventory, the 2013 updating of the Inventory and on-going research and requests from the public. The database will be reviewed bi-annually by a suitably qualified person.

25.5.2 Protected Tree owners advice

Establish a system of consultation and advice to owners of protected trees regarding maintenance, root protection and progenation.

25.5.3 Tree Maintenance Programme assistance

Provide free assistance to owners of protected tree inventory items in the preparation of maintenance or conservation plans when required.

25.5.4 Resource Consent fees

Waive resource consent fees for Protected Trees where the work will enhance the value and life expectancy of the tree.

25.5.5 Determination of value

The method that will be used to determine whether the tree should be listed in Appendix B shall be:

- a minimum score of 150 under STEM (Standard Tree Evaluation Method); or
- an explanation on why a particular tree has significant value to the community beyond what is recognised in STEM.

25.5.6 Protection of Trees

The principal method is to regulate land use and development that may effect trees identified as Protected Trees in Appendix B.

25.4 Rules

~~R18 General Rule – Protected Trees~~

Rules Number: R18

The following rules apply to any tree shown as a protected tree in Appendix A2 B- Protected Trees.

1. Permitted activities

The following are permitted activities throughout the District:

a. Minor maintenance to any protected tree. This is limited to:

- i. clearance of foliage or branches no greater than 100mm in diameter from existing utility networks, street lights or land boundary encroachments that does not alter the shape or health of the tree;
- ii. clearance of foliage or branches no greater than 100mm in diameter from roads,

footpaths and driveways that does not alter the shape or health of the tree;

iii. removal of deadwood from trees;

iv. the removal of dead or diseased vegetation;

v. clearance and clean-up after storm damage including broken branches.

b. Destruction or removal of any protected tree with an Arborist* assessment submitted to Council stating the work is:

i. An emergency work to maintain or restore existing power or telecommunication links, or

ii. To safeguard life or property.

2. Controlled activities

The following are controlled activities throughout the District:

a. Alteration of the shape or health of a protected tree as part of a Tree Maintenance Program*.

b. Removal of a protected tree that will be replaced with the progeny of the same tree.

23. Discretionary activities

The following are discretionary activities throughout the District:

a. The modification, destruction or removal of any protected tree except as provided for above.

b. Any activity including Excavation, construction or reconstruction work within the drip line* of a protected tree.

Link to more [Protected Trees](#) information.

Definitions

Arborist

means a person who, through experience and qualification, is considered by Council to hold specialist knowledge and expertise in the maintenance of trees generally or the maintenance of protected trees.

Drip line

means the ground surrounding a protected tree that is covered by the canopy plus a 0.5 metre buffer zone. Columnar Trees' drip line shall be a third of the height of the tree either side of the centre of the tree.

Protected Tree

means any tree listed in Appendix A2 B of the Plan.

Tree Maintenance Programme

means a programme of works specified for up to five years that has been developed with the assistance of an approved Council Arborist or tree surgeon.

Appendix BA2

Protected Trees

Site No	Planning Map	Type of Tree	Location	RNZIH Tree Evaluation								Evaluation Total
				Size	Position	Other Trees	Occurance	Setting	Life Exp	Form	Special	
1	U15	Pohutukawa	67 Liverpool Street – Regional Polytechnic	3	4	3	1	3	3	4	3	3888
2	U22	Moreton Bay Fig	Moutoa Gardens	3	3	2	3	3	2	3	3	2916
3	U15	Northern Rata	36 Parson Street	3	2	3	3	3	2	3	3	2916
4	U15	Pohutukawa	Corner of Liverpool and Halswell Streets	2	3	3	1	3	4	3	3	1944
5	U15	Northern Rata	22 Somme Parade	2	3	3	3	2	2	3	3	1944
6	U22	Pohutukawa	Moutoa Gardens	3	3	2	1	3	2	3	3	972
7	U15	Pohutukawa	40 Parson Street	3	2	3	1	3	3	3	3	1458
8	U26	Pohutukawa	136 Heads Road	3	3	3	1	2	3	3	2	972
9	U21	Pohutukawa	101-119 Liverpool Street	2	2	3	1	3	4	3	2	864
10	U16	Camphor Tree	67 Ikitara Road	3	1	3	3	2	2	3	2	648

Site No	Planning Map	Type of Tree	Location	RNZIH Tree Evaluation								Evaluation Total
				Size	Position	Other Trees	Occurrence	Setting	Life Exp	Form	Special	
11	U21	Washingtonia Palm	St Georges Gate	2	2	2	2	4	2	3	2	768
12	U16	Sweet or Spanish Chestnut	Sedbrook Street	2	2	2	2	3	2	3	2	576
13	U22	Mockernut Hickory	Kowhai Park	3	2	1	4	2	2	3	2	576
14	U22	Eucalyptus	Moutoa Gardens	3	2	2	1	3	2	3	2	432
15	U22	Pohutukawa	Moutoa Gardens	3	2	2	1	2	2	3	3	432
16	U2	Rimu	355 Somme Parade	2	2	2	3	1	3	2	1	144
17	U24	Pohutukawa	21 Tongariro Street	2	1	4	1	3	3	3	2	432
18	U21	Canary Island Palm	St Georges Gate	2	2	2	1	4	2	3	2	384
19	U22	Kauri	Moutoa Gardens	2	3	2	2	2	4	2	1	384
20	U22	Washingtonia Palm	Hipango Tee	2	4	2	2	2	2	3	1	384
21	U14	Totara	Rawhiti Place (End of Road)	2	2	3	2	2	2	3	1	288
22	U16	Totara	25 Nile Street	2	2	3	2	2	3	2	1	288
23	U15	Magnolia	39 Glasgow Street	2	2	3	2	3	2	2	1	288
24	U15	Brazilian Coral Tree	67 Liverpool Street – Regional Polytechnic	2	2	3	3	2	2	2	1	288
25	U16	Redwood	Kowhai Park	3	2	1	2	2	2	3	2	288
26	U22	Common English Oak	Moutoa Gardens	2	2	2	1	2	3	3	2	288

Site No	Planning Map	Type of Tree	Location	RNZIH Tree Evaluation								Evaluation Total
				Size	Position	Other Trees	Occurrence	Setting	Life Exp	Form	Special	
27	U22	Common English Oak	Moutoa Gardens	2	3	2	1	2	2	3	2	288
28	U26	Norfolk Island Hibiscus	45 Bedford Avenue	3	2	2	2	2	2	3	1	288
29	U15	Copper Beech	16 St Leonard Street	3	1	2	2	3	2	3	1	216
30	U16	Rimu	25 Nile Street	2	2	3	3	1	3	2	1	216
32	U21	Spanish or Algerian Oak	Wanganui Intermediate School	2	3	2	3	1	2	3	1	216
33	U15	Puriri	14 Urquhart Street	2	1	3	2	2	3	3	1	216
34	U22	Common English Oaks (2)	5 Purua Street	3	1	2	1	2	3	3	2	216
35	U21	Common English Oak	Campbell Street Palm Lounge	3	1	2	1	2	2	3	3	216
36	U2	English Elm	Aramoho Camp Ground	4	3	2	2	3	1	2	3	864
37	U22	Red Ash	Kowhai Park	2	2	1	3	2	2	2	4	384
38	U2	Ash	Aramoho Camp Ground	3	3	1	3	3	2	2	2	648
39	U22	Pohutukawa	Bell Street Police Station	3	3	3	1	3	2	2	2	648
41	U5	Chile Pine or Monkey Tree	237 Somme Parade	2	3	3	2	1	2	2	2	288

Site No	Planning Map	Type of Tree	Location	RNZIH Tree Evaluation								Evaluation Total
				Size	Position	Other Trees	Occurrence	Setting	Life Exp	Form	Special	
42	U22	Spanish or Algerian Oak	Kowhai Park	3	1	1	3	2	2	2	3	216
43	U15	Common English Oak	Keith Street School	2	2	2	1	3	2	3	1	144
44	U22	Japanese Umbrella Pine	Kowhai Park	2	1	1	3	2	3	2	3	216
45	U22	Swamp or Bald Cypress	Kowhai Park	2	1	1	3	2	3	2	4	288
46	U15	Pohutukawa	18 Urquhart Street	3	1	3	1	2	2	2	2	144
47	U22	Mayten	Kowhai Park	3	1	1	3	2	2	2	3	216
48	U22	Weeping Lilly Pilly Tree	Kowhai Park	3	2	1	3	1	2	2	3	216
49	U5	Copper Beech	274 Somme Parade	2	2	4	2	1	2	1	3	192
50	U16	Kauri	25 Nile Street	2	2	3	3	1	3	1	1	108
51	U2	Common Lime	Aramoho Camp Ground	3	1	1	3	1	2	3	4	216
52	U21	Pohutukawa	179 Ingestre Street	2	2	3	1	3	3	1	3	324
53	U2	Blue Atlas Cedar	357 Somme Parade (Reserve)	2	2	2	2	1	2	3	4	384
54	U16	Himalayan Spruce	Kowhai Park	2	1	2	3	3	2	2	2	288
55	U16	Scrub Bottle Tree	71a Ikitara Road	2	1	2	3	2	2	1	2	96
56	U16	Blue Atlas Cedar	Kowhai Park	3	1	1	2	3	2	2	4	288
57	U16	Honey Locust	Kowhai Park	3	1	1	2	3	2	2	4	288

Site No	Planning Map	Type of Tree	Location	RNZIH Tree Evaluation								Evaluation Total
				Size	Position	Other Trees	Occurrence	Setting	Life Exp	Form	Special	
58	U2	Red Gum	3 Willow Place	2	1	3	1	2	2	3	1	72
59	U21	Red Gum	179 Ingestre Street	2	2	3	1	3	2	2	3	432
60	U5	Common English Oak	258 Somme Parade	3	2	2	1	3	2	1	1	72
61	U10	Magnolia	140 Anzac Parade	3	1	2	2	3	1	1	2	72
62	U15	Silky Oak	Somme Parade(Opp Gloucester Street)	3	2	1	3	1	2	1	2	72
63	U15	Kurrajong	57 Somme Parade	2	3	2	3	1	2	1	1	72
64	U16	Chinese Poplar	Kowhai Park	3	3	1	1	3	2	2	2	216
65	U15	Cabbage Tree	98 Liverpool Street	2	2	3	1	2	1	1	3	72
66	U5	Japanese Maple	259 Somme Parade	2	2	2	2	2	1	2	1	64
67	U15	Titoki	18 Urquhart Street	2	1	3	2	2	3	1	1	72
68	U16	Lancewood/Horoeka	3-5 Willis Street	1	2	2	2	2	2	2	1	64
69	U22	Bunya Pine	Kowhai Park	3	3	1	3	3	1	2	4	648
70	U21	Abies/Picea	Queens Park	2	1	2	2	4	2	2	4	512
71	U21	Quercus—Group of 5	Queens Park	2	1	2	1	2	2	3	3	144
72	U21	Phoenix—Canariensis— Avenue of 5	Queens Park	2	1	2	1	2	3	3	3	216

Site No	Planning Map	Type of Tree	Location	RNZIH Tree Evaluation								Evaluation Total
				Size	Position	Other Trees	Occurrence	Setting	Life Exp	Form	Special	
73	U22	Washingtonia Palm	Moutoa Gardens	4	3	2	1	3	1	1	4	288
74	U22	Phoenix Palm	Kowhai Park	2	3	1	1	3	2	2	4	288
75	U21	Quercus Avenue of 5	Queens Park	2	1	2	1	2	2	2	3	96
76	U21	Cupressus Macrocarpa	Queens Park	2	1	2	1	4	2	2	4	256
77	U22	Metrosideros excelsa — 7 Trees	Queens Park	1	1	2	1	3	3	3	3	162
78	U21	Cupressus sempervirens	Queens Park	2	1	2	1	4	2	3	4	384
79	U21	Phoenix canariensis	Queens Park	2	1	2	1	2	3	3	3	216
80	U21	Phoenix canariensis	Queens Park	2	1	2	1	3	3	3	3	324
81	U21	Phoenix canariensis — Avenue of 18	Queens Park	2	1	2	1	4	3	4	4	768
83	U22	Puriri	Moutoa Gardens	2	1	2	2	2	2	3	3	288
84	U21	Pinus radiata	Queens Park	3	1	2	1	4	1	1	4	96
85	U21	Abies/Picea West	Queens Park	2	1	2	2	4	1	1	4	128
86	U9	Common English Oak (A)	12 Tulloch Street	4	1	2	1	3	4	3	1	288

Site No	Planning Map	Type of Tree	Location	RNZIH Tree Evaluation								Evaluation Total
				Size	Position	Other Trees	Occurrence	Setting	Life Exp	Form	Special	
87	U9	Common English Oak (B)	12 Tulloch Street	4	1	2	1	3	4	3	1	288
88	U16	Copper Beech	11 Nile Street	3	1	2	2	2	3	2	1	144
89	U9	Walnut	40A Brassey Street	2	1	4	1	1	4	2	3	192
90	U8	Common English Oak	Gt North Road/ Virginia Road Cnr	2	3	3	1	3	3	3	1	486
91	U8	Common English Oaks (Group of 8)	163A Great North Road	2	3	2	1	2	2	1	2	96
92	U3	Pohutukawa	193 Great North Road	2	3	2	1	3	4	3	1	432
93	U9	Pohutukawa	25 Oakland Avenue	3	1	2	1	3	3	3	3	486
94	U9	Common English Oak	7A Brassey Road	3	1	2	1	2	3	3	2	216
95 & 95a	U26	Common English Oaks (Avenue)	Heads Road - Carlton to Guyton	2	3	2	1	3	2	2	4	576
96	R19	Bunya Pine	No. 3 Line - Beside Gordons Bush	3	1	2	3	1	3	2	1	108
97	R19	Kauri	Papaiti Road	2	1	4	3	2	4	3	1	576
98	R19	Eucalyptus	Papaiti Road	4	1	4	1	4	3	4	2	1536
99	R14	Hoop Pine	Papaiti Road	3	1	2	3	1	3	3	2	324

Site No	Planning Map	Type of Tree	Location	RNZIH Tree Evaluation								Evaluation Total
				Size	Position	Other Trees	Occurrence	Setting	Life Exp	Form	Special	
100	R14	Tulip Tree	Papaiti Road	3	1	2	2	3	3	3	1	324
101	R14	Balsam Tree	Bushy Park	3	1	1	3	2	3	3	3	486
102	R14	Tawa	Bushy Park	3	1	1	3	2	3	3	3	486
103	R14	Rimu	Bushy Park	4	1	1	3	3	4	2	4	1152
104	R14	Copper Beech	Bushy Park	2	1	1	2	2	3	4	3	288
105	R14	Northern Rata	Bushy Park	4	1	1	3	3	3	3	4	1296
106	U5	Common English Oak	15a Cumbrae Place	2	1	3	2	2	3	3	2	432
107	U5	Common English Oak	15a Cumbrae Place	2	1	3	2	2	3	3	2	432
108	U5	Walnut	15 Cumbrae Place	2	1	3	3	2	2	2	2	288
109	R19	Pin Oak	Kaukatea Valley Road Lornerty	3	1	1	2	2	4	3	1	144
110	R19	Common English Oak	Kaukatea Valley Road Lornerty	2	1	3	1	3	3	3	2	324
111	R19	Bunya Pine	Kaukatea Valley Road Opposite Lornerty	3	1	3	3	2	2	2	1	216
120	U9	Copper Beech	59 Great North Road	3	3	3	2	1	3	3	1	486
121	U24	Pohutukawa	Corner of Mosston Road and Puriri Street	1	2	3	1	2	4	3	1	144
122	U2	Copper Beech	357 Somme Parade	2	2	2	2	1	4	3	0	192

District Plan reference		Type of Tree		Location		Assessment		
Site No.	Map reference	Common Name	Scientific Name	Address	Legal Description	No. of Trees	Link to evaluation	STEM Total
4 T45	U15	Pohutukawa	<u>Metrosideros excelsa</u>	67 Liverpool Street	PT SEC 27 Wanganui SBRN	1	www.protectedtrees/T45.pdf	<u>192</u>
2 T7	U22	Morten Bay Fig	<u>Ficus macrophylla</u>	Pakaitore, 2 Market Place	PT RS I TN OF Wanganui	1	www.protectedtrees/T7.pdf	<u>207</u>
3 T47	U15	Northern Rata	<u>Metrosideros robusta</u>	36 Parsons Street	Lot 4 DP 2361	1	www.protectedtrees/T47.pdf	<u>201</u>
4	U15	Pohutukawa	<u>Metrosideros excelsa</u>	Corner Liverpool and Halswell Streets	Road Reserve	1	www.protectedtrees/removed.pdf	<u>114</u>
5 T44	U15	Northern Rata	<u>Metrosideros robusta</u>	22 Somme Parade	Lot 1 DP 60310	1	www.protectedtrees/T44.pdf	<u>174</u>
6 T01	U22	Pohutukawa	<u>Metrosideros excelsa</u>	Pakaitore, 2 Market Place	PT RS I TN OF Wanganui	1	www.protectedtrees/T1.pdf	<u>162</u>
7 T48	U15	Pohutukawa	<u>Metrosideros excelsa</u>	40 Parsons Street	Lot 1 DP 2361	1	www.protectedtrees/T48.pdf	<u>180</u>
8	U26	Pohutukawa		136 Heads Road	Removed as a result of Storm Damage 2004			
9	U21	Pohutukawa	<u>Metrosideros excelsa</u>	Near 101-119 Liverpool Street	Road Reserve	15	www.protectedtrees/removed.pdf	<u>108</u> <u>120</u> <u>114</u> <u>114</u> <u>102</u> <u>132</u> <u>120</u> <u>126</u> <u>114</u> <u>126</u> <u>120</u> <u>120</u>

								<u>120</u>
								<u>120</u>
								<u>126</u>
40 <u>T30</u>	U16	Camphor Tree, Camphor Laurel	<u>Cinnamomum camphora</u>	67 Ikitara Road	<u>Lot 2 DP 42487</u>	<u>1</u>	www.protectedtrees/T30.pdf	<u>219</u>
44 <u>T43</u>	U21	Mexican Fan Palm, Skyduster Palm	<u>Washingtonia robusta</u>	St Georges Gate	<u>Road Reserve</u>	<u>5</u>	www.protectedtrees/T43.pdf	<u>189</u> <u>171</u> <u>177</u> <u>165</u> <u>171</u>
42 <u>T24</u>	U16	Spanish Chestnut, Sweet Chestnut	<u>Castanea sativa</u>	Sedgebrook Street	<u>Road Reserve</u>	<u>1</u>	www.protectedtrees/T24.pdf	<u>264</u>
43	U22	Mockernut Hickory		Kowhai Park	<u>Removed during storm event</u>			
44	U22	Eucalyptus		Pakaitore, 2 Market Place	<u>Removed during storm event</u>			
45 <u>T02</u>	U22	Pohutukawa	<u>Metrosideros excelsa</u>	Pakaitore, 2 Market Place	<u>PT RS I TN OF Wanganui</u>	<u>1</u>	www.protectedtrees/T02.pdf	<u>183</u>
46 <u>T55</u>	U2	Rimu	<u>Dacrydium cupressinum</u>	355 Somme Parade	<u>Lot 8 DP 43235</u>	<u>1</u>	www.protectedtrees/T55.pdf	<u>168</u>
47 <u>T54</u>	U24	Pohutukawa	<u>Metrosideros excelsa</u>	Near 21 Tongariro Street	<u>Road Reserve</u>	<u>1</u>	www.protectedtrees/T54.pdf	<u>171</u>
48 <u>T42</u>	U21	Canary Island Date Palm	<u>Phoenix canariensis</u>	St Georges Gate	<u>Road Reserve</u>	<u>6</u>	www.protectedtrees/T42.pdf	<u>135</u> <u>129</u> <u>123</u> <u>135</u> <u>135</u> <u>105</u>
49	U22	Kauri	<u>Agathis australis</u>	Pakaitore,	<u>PT RS I TN OF</u>	<u>1</u>	www.protectedtrees/T03.pdf	<u>186</u>

T03				2 Market Place	Wanganui			
20	U22	Mexican Fan Palm, Skyduster Palm	<u>Washingtonia robusta</u>	Hipango Terrace	Road Reserve	6 5	www.protectedtrees/T32.pdf	<u>153</u>
T32								<u>180</u>
								<u>174</u>
								<u>180</u>
								<u>158</u>
21	U14	Totara	<u>Podocarpus totara</u>	Rawhiti Place	Road Reserve	1	www.protectedtrees/T49.pdf	<u>174</u>
T49								
22	U16	Totara		25 Nile Street	Removed for structure & line safety 2012			
23	U15	Great Laurel Magnolia, Southern Magnolia, Bull Bay	<u>Magnolia grandiflora</u>	139 Glasgow Street	Pt Lot 1460 Deeds 267	1	www.protectedtrees/T41.pdf	<u>192</u>
T41								
24	U15	Cockspur Coral Tree, Coral Tree	<u>Erythrina cristagalli</u>	67 Liverpool Street	PT SECT 27	1	www.protectedtrees/T40.pdf	<u>177</u>
T40					Wanganui SBRN			
25	U22	Californian Redwood, Coast Redwood	<u>Sequoia sempervirens</u>	James McGregor Memorial Park	Lot 5 DP 12357	3	www.protectedtrees/T14.pdf	<u>198</u>
T14								
26	U22	English Oak	<u>Quercus robur</u>	Pakaitore, 2 Market Place	PT RS I TN OF	1	www.protectedtrees/T04.pdf	<u>150</u>
T04					Wanganui			
27	U22	English Oak	<u>Quercus robur</u>	Pakaitore, 2 Market Place	PT RS I TN OF	1	www.protectedtrees/T05.pdf	<u>147</u>
T05					Wanganui			
28	U26	Norfolk Island Hibiscus		Near 45 Bedford Avenue	Removed due to disease 2012			
29	U15	Copper Beech	<u>Fagus sylvatica</u> 'Purpurea'	6 St Leonard Street	Lot 12 DP 2255	1	www.protectedtrees/T50.pdf	<u>165</u>
T50								
30	U16	Rimu	<u>Dacrydium cupressinum</u>	25 Nile Street	Lot 2 DP 50649	1	www.protectedtrees/T25.pdf	<u>156</u>
T25								

32 T39	U15	Algerian Oak, Canary Oak, Mirbeck's Oak	<u>Quercus canariensis</u> X (hybrid)	Near 90 Dublin Street, opposite Victoria Avenue	Road Reserve	2	www.protectedtrees/T39.pdf	<u>198</u> <u>174</u>
33 T38	U15	Puriri	<u>Vitex lucens</u>	14 Urquhart Street	<u>Lot 3 DP 60310</u>	1	www.protectedtrees/T38.pdf	<u>198</u>
34 T31	U22	English Oak	<u>Quercus robur</u>	5 Purua Street	<u>Lot 2 DP 310806</u>	2	www.protectedtrees/T31.pdf	<u>171</u> <u>135</u>
35 T37	U21	English Oak	<u>Quercus robur</u>	2 Campbell Street	<u>SECT 137 TN OF Wanganui</u>	1	www.protectedtrees/T37.pdf	<u>120</u>
36	U2	English Elm		460 Somme Parade	Removed due to condition 2006			
37 T15	U22	Narrow-leaf Ash	<u>Fraxinus angustifolia</u>	James McGregor Memorial Park	<u>Lot 5 DP 12357</u>	1	www.protectedtrees/T15.pdf	<u>159</u>
38 T56	U2	Claret Ash	<u>Fraxinus angustifolia</u> subsp. <u>oxcarpa</u>	460 Somme Parade	<u>Lot 1 DP 1811</u>	1	www.protectedtrees/T56.pdf	<u>195</u>
39 T36	U22	Pohutukawa	<u>Metrosideros excelsa</u>	Police Station 1D Bell Street	<u>SECT 541 TN OF Wanganui</u>	1	www.protectedtrees/T36.pdf	<u>153</u>
41 T57	U5	Monkey Puzzle	<u>Araucaria araucana</u>	237 Somme Parade	<u>Lot 1 DP 46035</u>	1	www.protectedtrees/T57.pdf	<u>186</u>
42 T16	U22	Algerian Oak, Canary Oak	<u>Quercus canariensis</u>	James McGregor Memorial Park	<u>Lot 5 DP 12357</u>	1	www.protectedtrees/T16.pdf	<u>159</u>
43	U15	English Oak	<u>Quercus robur</u>	Keith Street School	<u>PT Lot 191 DP 928</u>	1	www.protectedtrees/removed.pdf	<u>120</u>
44 T17	U22	Japanese Umbrella Pine	<u>Sciadopitys verticillata</u>	James McGregor Memorial Park	<u>Lot 5 DP 12357</u>	1	www.protectedtrees/T17.pdf	<u>213</u>
45 T18	U22	Bald Cypress, Swamp	<u>Taxodium distichum</u>	James McGregor Memorial Park	<u>Lot 5 DP 12357</u>	1	www.protectedtrees/T18.pdf	<u>177</u>

Cypress								
46 T35	U15	Pohutukawa	<u>Metrosideros excelsa</u>	22 Somme Parade	<u>Lot 1 DP 60310</u>	<u>1</u>	www.protectedtrees/T35.pdf	<u>189</u>
47 T19	U22	Mayten	<u>Maytenus boaria</u>	James McGregor Memorial Park	<u>Lot 5 DP 12357</u>	<u>2</u>	www.protectedtrees/T19.pdf	<u>222</u> <u>162</u>
48 T20	U22	Weeping Lilly Pilly	<u>Syzygium ventenatii</u>	James McGregor Memorial Park	<u>Lot 5 DP 12357</u>	<u>1</u>	www.protectedtrees/T20.pdf	<u>183</u>
49 T58	U5	Copper Beech	<u>Fagus sylvatica</u> 'Purpurea'	274 Somme Parade	<u>Lot 12 A 1904</u>	<u>1</u>	www.protectedtrees/T58.pdf	<u>144</u>
50	U16	Kauri	<u>Agathis australis</u>	25 Nile Street	<u>Lot 2 DP 50649</u>	<u>1</u>	www.protectedtrees/removed.pdf	<u>114</u>
51 T59	U2	Common Lime, European Basswood	<u>Tillia X europaea</u>	460 Somme Parade	<u>Lot 2 DP 3855</u>	<u>1</u>	www.protectedtrees/T59.pdf	<u>219</u>
52	U21	Pohutukawa	<u>Metrosideros excelsa</u>	179 Ingestre Street	<u>PT Lot 1 DP 34545</u>	<u>1</u>	www.protectedtrees/removed.pdf	<u>126</u>
53 T60	U2	Atlantic Cedar, Atlas Cedar	<u>Cedrus atlantica</u>	357 Somme Parade	<u>Lot 17 DP 43235</u>	<u>1</u>	www.protectedtrees/removed.pdf	<u>135</u>
54 T21	U16	West Himalayan Spruce	<u>Picea smithiana</u>	Kowhai Park near model railway	<u>Lot 5 DP 12357</u>	<u>8</u> <u>5</u>	www.protectedtrees/T21.pdf	<u>123</u> <u>159</u> <u>117</u> <u>111</u> <u>96</u>
55 T26	U16	Scrub Bottle Tree, White Kurrajong, Lacebark Kurrajong	<u>Brachychiton discolor</u>	71a Ikitara Road	<u>PT Lot 2 DP 16273</u>	<u>1</u>	www.protectedtrees/T26.pdf	<u>216</u>
56	U22	Atlantic Cedar, Atlas Cedar	<u>Cedrus atlantica</u>	James McGregor Memorial Park	<u>Lot 5 DP 12357</u>	<u>1</u>	www.protectedtrees/removed.pdf	<u>141</u>

57 T22	U16	Honey Locust	<u>Gleditsia triacanthos</u>	Kowhai Park	<u>Lot 5 DP 12357</u>	<u>1</u>	www.protectedtrees/T22.pdf	<u>153</u>
58 T61	U2	Red-Flowering Gym	<u>Corymbia ficifolia</u>	3 Willow Place	<u>Lot 75 DP 45461</u>	<u>1</u>	www.protectedtrees/T61.pdf	<u>213</u>
59 T34	U21	Red-Flowering Gym	<u>Corymbia ficifolia</u>	179 Ingestre Street	<u>PT Lot 1 DP 34545</u>	<u>1</u>	www.protectedtrees/T34.pdf	<u>132</u>
60 T62	U5	English Oak	<u>Quercus robur</u>	258 Somme Parade	<u>Lot 2 DP 48551</u>	<u>1</u>	www.protectedtrees/T62.pdf	<u>171</u>
64 T27	U10	Great Laurel Magnolia, Southern Magnolia, Bull Bay	<u>Magnolia grandiflora</u>	140 Anzac Parade	<u>Lot 8 DP 15070</u>	<u>1</u>	www.protectedtrees/T27.pdf	<u>168</u>
62	U15	Silky Oak	<u>Grevillea robusta</u>	Somme Parade opposite Gloucester Street	<u>Road Reserve</u>	<u>1</u>	www.protectedtrees/removed.pdf	<u>114</u>
63	U15	Kurrajong		57 Somme Parade	<u>Removed during storm event 2004</u>			
64	U22	Chinese Poplar		Kowhai Park	<u>Removed during storm event 2004</u>			
65 T33	U15	Ti-kouka, Cabbage Tree	<u>Cordyline australis</u>	98 Liverpool Street	<u>PT SECT 16 Wanganui SBRN</u>	<u>1</u>	www.protectedtrees/T33.pdf	<u>153</u>
66 T63	U5	Japanese Maple	<u>Acer palmatum</u>	259 Somme Parade	<u>Lot 1 DP 60598</u>	<u>1</u>	www.protectedtrees/T63.pdf	<u>153</u>
67	U15	Titoki	<u>Alectryon excelsus</u>	22 Somme Parade	<u>Lot 1 DP 60310</u>	<u>1</u>	www.protectedtrees/removed.pdf	<u>114</u>
68 T28	U16	Lancewood Horoeke	<u>Pseudopanax crassifolius</u>	Near 5 Willis Street	<u>Road Reserve</u>	<u>1</u>	www.protectedtrees/T28.pdf	<u>99</u>
69 T23	U22	Bunya, Bunya	<u>Araucaria bidwillii</u>	James McGregor Memorial Park	<u>Lot 5 DP 12357</u>	<u>1</u>	www.protectedtrees/T23.pdf	<u>147</u>

		Bunya						
<u>T08</u>	U21	Spanish Fir	<u>Abies pinsapo</u>	Queens Park	<u>SECT 1 SO 431652</u>	<u>1</u>	www.protectedtrees/T08.pdf	<u>168</u>
<u>T09</u>	U21	English Oak, Turkey Oak	<u>Quercus robur</u> and <u>Quercus cerris X</u>	Queens Park	<u>SECT 1 & 2 SO 431652 and Queens Park Road Reserve</u>	<u>5</u>	www.protectedtrees/removed.pdf	<u>132</u> <u>138</u> <u>123</u> <u>129</u> <u>123</u>
<u>T09</u>	U21	Canary Island Date Palm	<u>Phoenix canariensis</u>	Queens Park	<u>SECT 1 SO 431652</u>	<u>5</u>	www.protectedtrees/T09.pdf	<u>144</u> <u>141</u> <u>147</u> <u>156</u> <u>144</u>
<u>T06</u>	U22	Mexican Fan Palm, Skyduster Palm	<u>Washingtonia robusta</u>	Pakaitore, 2 Market Place	<u>PT RS I TN OF Wanganui</u>	<u>1</u>	www.protectedtrees/T06.pdf	<u>159</u>
<u>T10</u>	U22	Canary Island Date Palm	<u>Phoenix canariensis</u>	James McGregor Memorial Park	<u>Lot 5 DP 12357</u>	<u>1</u>	www.protectedtrees/removed.pdf	<u>117</u>
<u>T11</u>	U21	English Oak	<u>Quercus robur</u>	Queens Park	<u>SECT 1 SO 431652</u>	<u>5</u>	www.protectedtrees/removed.pdf	<u>117</u> <u>108</u> <u>90</u> <u>90</u> <u>111</u>
<u>T10</u>	U21	Monterey Cypress, Macrocarpa	<u>Cupressus macrocarpa</u>	Queens Park	<u>SECT 1 SO 431652</u>	<u>1</u>	www.protectedtrees/T10.pdf	<u>129</u>
<u>T11</u>	U21	Pohutukawa	<u>Metrosideros excelsa</u>	Queens Park	<u>SECT 1 SO 431652</u>	<u>7</u>	www.protectedtrees/T11.pdf	<u>123</u> <u>135</u> <u>120</u> <u>126</u> <u>120</u>

									114 141
78 T12	U21	Mediterranean Cypress, Pencil Pine	<u>Cupressus sempervirens</u>	Queens Park	<u>SECT 1 SO 431652</u>	1	www.protectedtrees/T12.pdf		174
79	U21	Canary Island Date Palm	<u>Phoenix canariensis</u>	Queens Park	<u>SECT 1 SO 431652</u>	1	www.protectedtrees/removed.pdf		138
80	U21	Canary Island Date Palm	<u>Phoenix canariensis</u>	Queens Park	<u>SECT 1 & 2 SO 431652</u>	5	www.protectedtrees/removed.pdf		114 114 120 138 120
81 T13	U21	Canary Island Date Palm	<u>Phoenix canariensis</u>	Queens Park	<u>SECT 1 SO 431652</u>	17	www.protectedtrees/T13.pdf		138
83	U22	Puriri	<u>Vitex lucens</u>	Pakaitore, 2 Market Place	<u>PT RS 1 TN OF Wanganui</u>	1	www.protectedtrees/removed.pdf		132
84	U21	Radiata Pine		Queens Park	<u>Removed for safety in 2009</u>				
85	U21	Spanish Fir	<u>Abies pinsapo</u>	Queens Park	<u>SECT 1 SO 431652</u>	1	www.protectedtrees/removed.pdf		141
86	U9	English Oak	<u>Quercus robur</u>	12 Tulloch Street	<u>Lot 3 DP 20174</u>	1	www.protectedtrees/removed.pdf		135
87	U9	English Oak	<u>Quercus robur</u>	12 Tulloch Street	<u>Lot 3 DP 20174</u>	1	www.protectedtrees/removed.pdf		147
88 T29	U16	Copper Beech	<u>Fagus sylvatica</u> 'Purpurea'	11 Nile Street	<u>Lot 1 DP 79827</u>	1	www.protectedtrees/T29.pdf		153
89	U9	Walnut, English Walnut	<u>Juglans regia</u>	40a Brassey Road	<u>Lot 2 DP 34637</u>	1	www.protectedtrees/removed.pdf		135
90 T51	U8	English Oak	<u>Quercus robur</u>	Corner of Great North and Virginia	<u>Road Reserve</u>	1	www.protectedtrees/T51.pdf		171

				Roads				
91	U8	English Oak	<u>Quercus robur</u>	165a Great North Road	<u>Lot 1 DP 68908</u>	<u>8</u>	www.protectedtrees/removed.pdf	<u>120</u> <u>126</u> <u>84</u> <u>102</u> <u>126</u> <u>102</u> <u>147</u> <u>120</u>
92 T52	U3	Pohutukawa	<u>Metrosideros excelsa</u>	193 Great North Road	<u>Lot 1 DP 55118</u>	<u>1</u>	www.protectedtrees/T52.pdf	<u>177</u>
93	U9	Pohutukawa		25 Oakland Avenue	Removed as it was a risk 2013			
94	U9	English Oak		7a Brassey Road	Removed for structure safety 2013			
95 & 95A T46	U26	English Oak	<u>Quercus robur</u>	Heads Road between Guyton Street and Carlton Avenue	<u>Road Reserve</u>	<u>78</u> assess ed in 2 groups	www.protectedtrees/T46.pdf	<u>189</u> <u>189</u>
96 T69	U11	Bunya, Bunya Bunya	<u>Araucaria bidwillii</u>	No.3 Line, near Gordons Bush	<u>PT Lot 11 DP 8170</u>	<u>1</u>	www.protectedtrees/T69.pdf	<u>171</u>
97 T70	R19	Kauri	<u>Agathis australis</u>	333 Papaiti Road	<u>Lot 1 DP 45184</u>	<u>1</u>	www.protectedtrees/T70.pdf	<u>150</u>
98 T71	R18	Tasmanian Blue Gum	<u>Eucalyptus globulus</u>	Near 736 Papaiti Road	<u>Queens Chain near Lot 3 DP 76859</u>	<u>1</u>	www.protectedtrees/T71.pdf	<u>147</u>
99 T72	R18	Hoop Pine	<u>Araucaria cunninghamii</u>	778 Papaiti Road	<u>Lot 1 DP 76859</u>	<u>1</u>	www.protectedtrees/T72.pdf	<u>207</u>
400 T73	R18	Tulip Tree	<u>Liriodendron tulipifera</u>	701 Papaiti Road	<u>Lot 1 DP 78939</u>	<u>1</u>	www.protectedtrees/T73.pdf	<u>159</u>
401 T65	R14	Douglas Fir	<u>Pseudotsuga menziesii</u>	Bushy Park, 791 Rangitatau East Road	<u>Lot 2 DP 12732</u>	<u>4</u>	www.protectedtrees/T65.pdf	<u>171</u> <u>171</u> <u>171</u> <u>138</u>

402	R14	Tawa		Bushy Park, 791 Rangitatau East Road	Removed during storm event 2004			
403 T66	R14	Rimu	<u>Dacrydium cupressinum</u>	Bushy Park, 791 Rangitatau East Road	Lot 2 DP 12732	1	www.protectedtrees/T66.pdf	<u>267</u>
404 T67	R14	Copper Beech	<u>Fagus sylvatica</u> 'Purpurea'	Bushy Park, 791 Rangitatau East Road	Lot 2 DP 12732	1	www.protectedtrees/T67.pdf	<u>159</u>
405 T68	R14	Northern Rata	<u>Metrosideros robusta</u>	Bushy Park, 791 Rangitatau East Road	Lot 2 DP 12732	1	www.protectedtrees/T68.pdf	<u>309</u>
406	U5	English Oak	<u>Quercus robur</u>	45a Cumbrae Place	PT Lot 100 DP 2079	1	www.protectedtrees/removed.pdf	<u>141</u>
407 T64	U5	English Oak	<u>Quercus robur</u>	15a Cumbrae Place	PT Lot 100 DP 2079	1	www.protectedtrees/T64.pdf	<u>153</u>
408	U5	Walnut, English Walnut	<u>Juglans regia</u>	45 Cumbrae Place	Lot 101 DP 2079	1	www.protectedtrees/removed.pdf	<u>126</u>
409 T74	R19	Pin Oak, Swamp Oak	<u>Quercus palustris</u>	305 Kaukatea Valley Road	PT SECT 206 LBWR	1	www.protectedtrees/T74.pdf	<u>213</u>
410	R19	English Oak		305 Kaukatea Valley Road	Removed during storm event			
411 T75	R19	Bunya, Bunya Bunya	<u>Araucaria bidwillii</u>	305 Kaukatea Valley Road	PT SECT 206 LBWR	1	www.protectedtrees/T75.pdf	<u>222</u>
420 T53	U15	Copper Beech	<u>Fagus sylvatica</u> 'Purpurea'	59 Great North Road	Lot 2 DP 17440	1	www.protectedtrees/T53.pdf	<u>159</u>
421	U24	Pohutukawa	<u>Metrosideros excelsa</u>	30 Mosston Road	Lot 113 DP 1863	1	www.protectedtrees/removed.pdf	<u>108</u>

Part II – Plan Change Report

1. Introduction

Proposed Plan Change 31 proposes amendments to the provisions in rule 25 relating to the Protected Trees and updating the Protected Trees register in Appendix B of the Wanganui District Plan.

This report evaluates the proposed Plan Change in terms of the Resource Management Act 1991 (the Act), with specific consideration given to the requirements outlined in Section 32 and whether or not the proposed Plan Change achieves the purposes of the Act.

This report considers:

- The existing relevant District Plan provisions;
- Background to proposed Plan Change 31;
- An evaluation of each of the proposed amendments to the Protected Trees rules and definitions; and
- The costs and benefits associated with each of the proposed methods.

2. The existing relevant District Plan provisions & proposed provisions

The Protected Trees rules sit within the General Rules in the District Plan. These rules apply throughout the Wanganui District irrespective of zones. Rule 25 specifically responds to the statutory obligation of Council under the Act in relation to outstanding natural features (Section 6(b)), historic heritage (Section 6(f)) and amenity values (Section 7c)).

Currently there are no Issues, Objectives, Policies and Methods that guide the management of Protected Trees.

The proposed changes to the Issues Objectives, Policies, Methods and Rules include (changes underlined):

25.1.1 Protection of significant Trees

Trees that make up a part of Wanganui's history, culture, amenity or contain unique ecological value need to be identified and protected from development. Their removal or modification may result in a reduction in amenity and quality of Wanganui's environment.

25.2.1 Tree protection

Recognition and protection of trees with significant historical, cultural, amenity or ecological value to the community.

25.3.1 Retention of Trees

To recognise and protect significant trees (or groups of trees) that contribute to the history, ecology, character or amenity for the Wanganui community as identified in Appendix B.

25.3.2 Protection of Trees

To manage land use and development to avoid, remedy or mitigate any adverse effect on protected trees.

25.3.3 Protected Tree Promotion

To promote the history, location and special features of significant trees to the public.

25.3.4 Length of Tree Protection

Protected Trees shall be retained for their natural life unless this would create an immediate risk to life or property.

25.3.5 Propagation of Trees

To recognise that trees have a finite lifespan and to require the re-planting of prodigy in the same or related location, when a protected tree has reached the end of its life.

25.3.6 The removal of Protected Trees

Any application to modify or remove a Protected Tree shall be assessed against the following:

- a. Whether the tree is near the end of its natural lifespan or if the work will extend the life of the tree
- b. The ability to replant with off-spring from the tree with a root ball of no less than PB40 (note that some species have a higher requirement)
- c. How the location is to be cleared and restored after removal of the tree
- d. The historical, cultural, amenity or ecological value of the tree
- e. An independent Arborist* assessment on the condition of the tree and any works to be completed
- f. The mulching and definition of the extent of the root/drip line to prevent future damage to the tree or its replacement

25.5.1 Protected Tree Database

Maintain a comprehensive database of protected trees using STEM, derived primarily from the 1988 Historic, Notable and Aesthetic Trees, 1993 Protected Tree Inventory, the 2013 updating of the Inventory and on-going research and requests from the public. The database will be reviewed bi-annually by a suitably qualified person.

25.5.2 Protected Tree owners advice

Establish a system of consultation and advice to owners of protected trees regarding maintenance, root protection and progenation.

25.5.3 Tree Maintenance Programme assistance

Provide free assistance to owners of protected tree inventory items in the preparation of maintenance or conservation plans when required.

25.5.4 Resource Consent fees

Waive resource consent fees for Protected Trees where the work will enhance the value and life expectancy of the tree.

25.5.5 Determination of value

The method that will be used to determine whether the tree should be listed in Appendix B shall be:

- a minimum score of 150 under STEM (Standard Tree Evaluation Method); or
- an explanation on why a particular tree has significant value to the community beyond what is recognised in STEM.

25.5.6 Protection of Trees

The principal method is to regulate land use and development that may effect trees identified as Protected Trees in Appendix B.

25.4 Rules Number: 25 R18 General Rule - Protected Trees

The following rules apply to any tree shown as a protected tree in Appendix A2 B- Protected Trees.

1. Permitted activities

The following are permitted activities throughout the District:

a. Minor maintenance to any protected tree. This is limited to:

- i.** clearance of foliage or branches no greater than 100mm in diameter from existing utility networks, street lights or land boundary encroachments that does not alter the shape or health of the tree;
- ii.** clearance of foliage or branches no greater than 100mm in diameter from roads, footpaths and driveways that does not alter the shape or health of the tree;
- iii.** removal of deadwood from trees;
- iv.** the removal of dead or diseased vegetation;
- v.** clearance and clean-up after storm damage including broken branches.

b. Destruction or removal of any protected tree with an Arborist* assessment submitted to Council stating the work is:

- i.** An emergency work to maintain or restore existing power or telecommunication links, or
- ii.** To safeguard life or property.

2. Controlled activities

The following are controlled activities throughout the District:

- a.** Alteration of the shape or health of a protected tree as part of a Tree Maintenance Program*.
- b.** Removal of a protected tree that will be replaced with the progeny of the same tree.

23. Discretionary activities

The following are discretionary activities throughout the District:

- a.** The modification, destruction or removal of any protected tree except as provided for above.
- b.** Any activity including ~~E~~excavation, construction or reconstruction work within the drip line* of a protected tree.

Link to more [Protected Trees](#) information.

3. Background to proposed Plan Change 31

There are currently 110 protected tree listings (of which 13 listings are no longer there) within the Wanganui District that are protected through rules in the current Wanganui District Plan. These rules require resource consent is obtained prior to:

- More than minor maintenance;
- The destruction or removal of any protected tree except as an emergency work; or
- Any activity including Excavation, construction or reconstruction work within the drip line of a protected tree.

The rules became operative in 2004 and therefore under Section 79(1) of the Act, Council is required to review the Protected Trees provisions of the Wanganui District Plan.

In 2012 the Wanganui District Council began consultation with the members of the public to discuss potential issues with the current provisions and listings for Protected Trees.

Consultation was held at:

Date	Location	Comments
15/09/2012	River Traders Market	Introduced Protected Trees at a stall as part of the District Plan review and created a mailing list of interested parties.
18/09/2012	Kai Iwi Hall	Introduced Protected Trees at a meeting as part of the District Plan review and created a mailing list of interested parties.
20/09/2012	Mangamahu Memorial Hall	Introduced Protected Trees at a meeting as part of the District Plan review and created a mailing list of interested parties.
26/09/2012	Kakatahi School	Introduced Protected Trees at a meeting as part of the District Plan review and created a mailing list of interested parties.
27/09/2012	Brunswick Hall	Introduced Protected Trees at a meeting as part of the District Plan review and created a mailing list of interested parties.
2/10/2012	Fordell Community Hall	Introduced Protected Trees at a meeting as part of the District Plan review and created a mailing list of interested parties.
4/10/2012	Horrocks Park Hall	Introduced Protected Trees at a meeting as part of the District Plan review and created a mailing list of interested parties.
22/04/2013	Wanganui District Council	Introduced Protected Trees at a meeting to the Rural Community Board and what the potential issues are.

A consultation newsletter sent in September and November 2012 referred to the Protected Trees and was sent to all listed interested parties as well as being available at Council's main building at 101 Guyton Street, Wanganui.

Letters were sent to the owners and interested parties in regards to protected trees on:

Date	In regards to:
September 2012	Stating that a review of the Protected Trees would be undertaken.
January 2013	The Arborist assessing each currently listed Protected Tree.
May 2013	The Issues, Objectives and Policy document available for comment on the website.
June 2013	A copy of the STEM assessment for current trees and a proposal to restrict tree listings in the District Plan to minimum level.

After the STEM tree results were in, it was concluded that 75 trees from the existing list of 110 are worth protecting in the proposed District Plan. As part of the submission process for this plan change, the public will be able to submit recommendations for additional trees or groups of trees to be assessed and potentially added to the Protected Tree Inventory.

A review of best practice and the results of the consultation in regards to Protected Trees determined that the following improvements could be made:

1. Revise the Objectives, policies, methods and rules to specifically include the protection of trees and what is sought by the protection. Make the links between the objectives, policies, rules and methods easy to understand.
2. Consider if there are non-regulatory methods that could be used to help achieve compliance.
3. Provide clear information to tree owners on the outcomes sought by the District Plan, particularly in relation to pruning, trimming and maintenance.
4. State why a tree is protected.
5. Clear up what 'minor' permitted activities are, by setting maximum cutting diameters for branches.
6. Remove trees from the list that have gone and assess new trees for inclusion based on what the community suggests and societies/groups that take a strong interest in trees.
7. Provide assessment criteria for determining consent applications.

Thus, this Plan Change is a result of Council's statutory obligation to review the District Plan, and concerns raised by the community in terms of how the current Protected Tree list is updated and used.

4. Resource Management Act (1991) Section 32 Evaluation requirements

Section 32 of the Resource Management Act 1991 (the Act) establishes a process for local authorities to test the appropriateness of any proposed provisions, in preparing new plans, plan changes and reviews. This report has been prepared to fulfil the requirements of Section 32(2) of the Act, which requires local authorities to undertake a further evaluation before making a decision under the First Schedule.

Section 32 requires:

32 Consideration of alternatives, benefits, and costs

- (1) *In achieving the purpose of this Act, before a proposed plan, ... change, or variation is publicly notified, ... an evaluation must be carried out by—*
- ...
- (c) *the local authority, for a policy statement or a plan (except for plan changes that have been requested and the request accepted under clause 25(2)(b) of Schedule 1); or*

- (2) *A further evaluation must also be made by—*
- (a) *a local authority before making a decision under clause 10 or clause 29(4) of Schedule 1; and*
- ...
- (3) *An evaluation must examine—*
- (a) *the extent to which each objective is the most appropriate way to achieve the purpose of this Act; and*
 - (b) *whether, having regard to their efficiency and effectiveness, the policies, rules, or other methods are the most appropriate for achieving the objectives*
- ...
- (4) *For the purposes of the examinations referred to in subsections (3) and (3A), an evaluation must take into account—*
- (a) *the benefits and costs of policies, rules, or other methods; and*
 - (b) *the risk of acting or not acting if there is uncertain or insufficient information about the subject matter of the policies, rules, or other methods.*
- (5) *The person required to carry out an evaluation under subsection (1) must prepare a report summarising the evaluation and giving reasons for that evaluation.*

Under Section 32 of the RMA, it is Council’s duty before adopting any objective, policy or rule to consider alternatives to the change, and to assess any benefits and costs. The Council must, amongst other things, have regard to the extent to which the particular objectives, policies and rules or other methods are necessary in achieving the purposes of the Act.

The purpose of the RMA is to promote the sustainable management of natural and physical resources. In achieving the purpose of the Act, section 6 lists the protection of historic heritage (which may include protected trees) as a matter of national importance. Trees have long been intertwined with heritage, being commemorative of special events, places or people, sites of historic importance and attached to matters of cultural importance, etc.

Section 7 also requires particular regard to be given to the maintenance and enhancement of amenity values, the intrinsic values of ecosystems and the maintenance and enhancement of the quality of the environment.

The current objective and policy does address sections 5, 6 and 7 of the Act; however it is only in a board term, with little relevance to Protected Trees. In order for the objectives and policies behind the rules to carry more weight, it is intended to create an additional objective and several policies that outline what is sought by the community by listing particular trees and how the Council seeks to achieve this.

5. Consideration of Methods

While the use of non-regulatory methods such as Council’s Tree Policy, education and information provisions have been taken into account, as a primary option these were not considered to be an appropriate standalone option for achieving the objectives of the Plan. It is therefore deemed most appropriate to maintain non-regulatory methods as supplementary to regulatory approaches. In investigating the best regulatory method of achieving the objectives of the Proposed Plan Change, three options were identified and considered.

The options considered are as follows:

	Options	Explanation
Option 1	Maintain the Status Quo – Do nothing	Leave Plan as it is – no additional trees added or updated. Just remove the trees from the list that are no longer there.
Option 2	Update the Tree Inventory list-only	Update the Tree Inventory using STEM (national standard).
Option 3	List additional Trees and develop specific rules and policies	Update the Tree Inventory in conjunction with amendments to the objectives, policies and rules which are relevant to these updates.

Each of these identified options is discussed in detail below.

6. Evaluation

The objective and policies of this plan change have been developed from the consultation with the public and owners of Protected Trees and changes to the RMA in 2009.

The Proposed Objective of this Plan Change is as follows:

- Tree protection

One of the aims of Section 32 analysis is to identify a preferred approach as being more efficient and effective approach than other options in achieving the key objectives listed above which reflect the objectives of the Wanganui District Plan and the RMA. The Benefits and costs of each option are illustrated below.

	Benefits	Costs
Option 1 – Status Quo- Do Nothing	Least financial cost in the short term as no requirement for Plan Change or additional assessments. Retain familiarity with the existing objectives, policies and rules.	Increased costs on developers/property owners with the requirement to prove location and value of tree due to lack of Council information. Increased risk of losing trees as reason for protection is not clear on the assessment or the Objectives and Policies. Council not fulfilling obligations under the Act.
Option 2 – Update the Tree Inventory only	No changes to the rules. Correct locations and names of tree protected meaning more certainty to the public.	Cost of Plan Change Process. Council's obligations to ensure effectiveness and efficiency of provisions not achieved as reasons for tree protection not clear. Shortcomings in current rules and policies not addressed.
Option 3 - List additional Trees and develop specific rules and policies	Statutory obligations of Council fulfilled. District Plan corrected and updated. Council would be able to refuse approval or apply conditions to	Cost of the Plan Change Process. Loss of private land use rights for landowners of new trees listed. Potential to impose on private property rights by increasing regulatory protection.

consents for activities that mitigate adverse effects on specific trees.

More certainty for developers and owners on the type of work permitted and how applications will be assessed.

Provides for future management of Protected Trees and not just the one activity.

Cost efficient in terms of updating the list and addressing provisions at the same time.

Plan effectiveness and efficiency addressed.

6.1 Maintain the Status Quo (Do nothing)

Maintaining the status quo is an option that needs to be considered. This would simply involve the retention of the existing District Plan provisions and list (less the trees removed over the past 10 years). This option ignores the currently unlisted trees that may be worthy of District Plan protection, thus not giving effect to Part 2 of the RMA.

Maintaining the status quo would also result in a situation where trees worthy of protection throughout the District continue to be lost as a result of urban development or unfortunate pruning and/or maintenance.

As a result of these findings and taking into account the risk of acting or not acting it is considered that maintaining the status quo would not provide sufficient protection for the District's valued trees, nor would it fulfil Council's statutory obligations under the RMA. Therefore, it is not considered to be the best method available.

6.2 Listing of additional Trees only

Five of the current protected trees have been removed in the past two years, with thirteen trees lost since the last plan review. This is partly due to the age of the tree stock, but has also been due to damage to the trees, of which they have not recovered. It has been identified that the current provisions of the District Plan are not clear in terms of what is considered healthy work able to be carried out on the trees, and what the protection of the trees seek to achieve in the objections.

If Council was to proceed with the option of updating the tree inventory list (which would address the identifying and location shortcomings) without updating the objectives, policies and rules, then the protection of the trees would be ineffectual. The objectives, policies and rules are vague and are not specific enough to trees in order to protect them.

This option is not therefore considered to be an efficient and effective approach for addressing current inaccuracies and meeting the statutory obligations of the Act.

6.3 Listing of additional Trees and development of specific objectives, policies and rules

This method would build on option 2 by addressing the shortcomings of the objectives, policies and rules in relation to the protection of trees.

As stated in section 2.1 of this report, the proposed objectives, policies and rules seek to provide clarification to Council staff and owners as to what is permitted and safe work on

trees and what Council will consider during a consent for removal. The proposed rules clarify that trees cannot be protected forever as they all will eventually die of disease or old age.

This method also clarifies when a tree is of sufficient value to the community to be protected. In order to determine which trees have value, Appendix 1 of this report outlines a flowchart that is used to determine if a tree should be listed. A STEM score of over 150¹ indicates that the tree is of a significant form and value that its loss would impact the amenity of the area. The flowchart also identifies that some trees can have significant value to the community for reasons other than identified fully in STEM, but should still be protected, in accordance with what the District Plan seeks to achieve.

A list of the trees that are currently listed but would be removed as a result of this assessment criteria is attached in Appendix 2 and a list of trees that have low STEM scores, but value to the community is listed in Appendix 3.

7. Analysis of Options

Of the three options, Option 1; Maintain the Status Quo (Do nothing) is not believed to be an appropriate means to achieve the objectives as stated in section 6. It does not encourage the protection of new trees which contribute to the community's sense of place or history. Maintaining the status quo would result in an environmental cost of lost trees and a social/cultural cost in people's experience if the trees were lost or detrimentally altered.

Option 2 while addressing the lack of recognition of potential new trees and dated nature of the inventory in the District Plan, is not considered adequate enough to fulfil the purpose of the RMA. This is primary because the values of the trees would not be reflected in the rules, policies, objectives or issues of the plan and would become even more inconsistent with the objectives and purposes of the act by failing to provide for the regulatory protection of Protected Trees.

Therefore, option 3; Listing additional trees and amendments and development to the objectives, policies and rules, is recommended because it is considered to be the most efficient and effective way to protect the trees identified, with the best outcomes in terms of the environmental, social/cultural and economic costs and benefits.

Various council staff have been involved in undertaking a significant amount of work and consultation to ensure that Council has sufficient information to prepare a Plan Change. The Council has not relied on any uncertain or insufficient information, but has undertaken research and technical assessments such as STEM to ensure the subject is adequately understood and recommendations are wisely founded.

8. Appropriateness of the Plan Change

Whether or not the plan change is necessary or appropriate is directly linked to Sections 5, 6 and 7 of the Resource Management Act 1991. This plan change is considered necessary to achieve the purpose and principals of the Act because:

¹ A STEM score of 150 is based on a recommendation from the Arborist who carried out the assessments, along with research into what other Council's use and the previous Notable Trees New Zealand Tree Registration Manual.

It promotes the sustainable management of the Wanganui District's environment whilst avoiding, remedying or mitigating any adverse effects that removal or alteration to the trees may have.

The addition of trees through the submission process in combination with the proposed controls will assist in ensuring that the adverse effects on the Wanganui community will be avoided, remedied or mitigated.

9. Conclusion & Recommended Option

It is considered that the inclusion of additional trees in combination with the proposed amended objectives, policies, rules and methods is the most efficient and effect means available to Council to preserve and enhance the key trees of the Wanganui District.

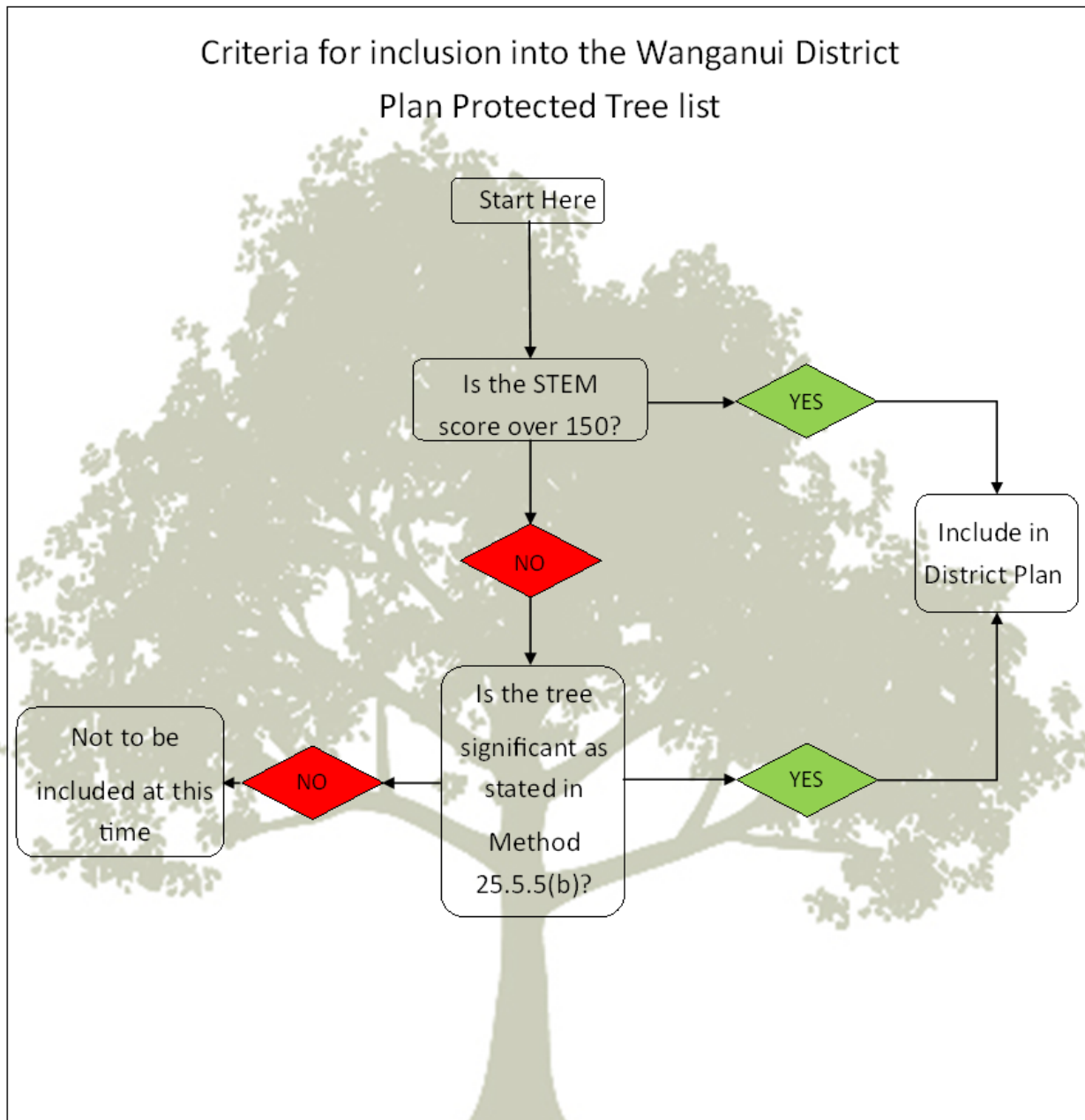
Appendices

Appendix One: Criteria diagram for consideration of Protected Trees

Appendix Two: Protected Trees to be removed from the District Plan

Appendix Three: Protected Trees to be retained with a STEM score of less than 150

Appendix 1 – Criteria diagram for consideration of Protected Trees



Appendix 2: Protected Trees to be removed from the District Plan

District Plan ref	2013 STEM ASSESSMENTS		
	Type of Tree	Location	Score
4	Pohutukawa	Road Reserve Cr Liverpool & Halswell Street	114
8	Pohutukawa	136 Heads Road	removed
9	Pohutukawa (Group of 15)	Road Reserve 101-119 Liverpool Street	108, 120, 114, 114, 102, 132, 120, 126, 114, 126, 120, 120, 120, 120, 126
13	Mockernut Hickory	Kowhai Park	removed
14	Eucalyptus	Moutoa Gardens	removed
22	Totara	25 Nile Street	removed
28	Norfolk Island Hibiscus	45 Bedford Avenue	removed
36	English Elm	460 Somme Parade	removed
43	Common English Oak ²	Keith Street School	120
50	Kauri	25 Nile Street	114
52	Pohutukawa	179 Ingestre Street	126
56	Atlantic Cedar, Atlas Cedar	MacGregor Park	141
62	Silky Oak	Road Reserve Somme Parade opposite Gloucester Street	114
63	Kurrajon	57 Somme Parade	removed
64	Chinese Poplar	Kowhai Park	removed
67	Titoki	18 Urquhart Street (15 Somme Parade)	114
71	English Oak and Turkey Oak (Group of 5)	Queens Park	132, 138, 123, 129, 123
74	Canary Island Date Palm	James McGregor Memorial Park	117
75	English Oak (Group of 5)	Queens Park	117, 108, 90, 90, 111
79	Canary Island Date Palm	Queens Park	138

² Note that this tree has high historical value; however it is at the end of its life.

80	Canary Island Date Palm (Group of 5)	Queens Park	114, 114, 120, 138, 120
83	Puriri	Pakaitore	132
84	Radiata Pine	Queens Park	removed
85	Spanish Fir	Queens Park	141
86	English Oak	12 Tulloch Street	135
87	English Oak	12 Tulloch Street	147
89	English Walnut	40A Brassey Road	135
91	Common English Oaks (Group of 8)	165A Great North Road	120, 126, 84, 102, 126, 102, 147, 120
93	Pohutukawa	25 Oakland Avenue	removed
94	English Oak	7a Brassey Road	removed
102	Tawa	Bushy Park	removed
106	Common English Oak	15a Cumbrae Place	141
108	English Walnut	15 Cumbrae Place	126
110	English Oak	305 Kaukatea Valley	removed
121	Pohutukawa	30 Mosston Road	108

Appendix 3: Trees with value outside of the STEM assessment

District Plan ref	2013 STEM ASSESSMENTS			
Type of Tree	Location	Score	Value to the Community	
18	Canary Island Date Palm (Group of 6)	Road Reserve St Georges Gate	135, 129, 123, 135, 135, 105	Heritage & Landscape – this was a traditional type of planting for the early settlers and this group provides an excellent mature group example.
27	English Oak	Pakaitore	147	Heritage – this tree was planted in 1902 to commemorate the coronation of King Edward VII.
35	Common English Oak	2 Campbell Street	120	Heritage – the home of Rev. Richard Taylor who is believed to have planted this tree.
49	Copper Beech	274 Somme Parade	144	Heritage – Planted in 1895.
53	Atlantic Cedar, Atlas Cedar	357 Somme Parade	135	Landscape/Amenity – this tree is planted on an aerial road and provides amenity to the public due to its size and location.
54	West Himalayan Spruce (Group of 5)	Kowhai Park	123 159 117 111 96	Ecological & Landscape – these trees are rare in New Zealand and its size and location means it has high landscape value to the community.
59	Red-Flowering Gum	179 Ingestre Street	132	Landscape/Amenity & Heritage – the size and location of this tree provides landscape and amenity value to the community. Pontenually planted by ponminant settler.
68	Lancewood/Horoeka	5 Willis Street	99	Heritage – potentially planted by Mrs Elaenor Burgess.
69	Bunya, Bunya Bunya	Kowhai Park	147	Ecological – mature specimens of this tree are rare are New Zealand.
72	Canary Island Date Palm (Group of 5)	Queens Park	144, 141, 147, 156, 144	Landscape/Amenity – these trees are mature and in a public and prominent position overlooking the city.
76	Monterey Cypress, Macrocarpa	Queens Park	129	Heritage – the location of this tree means that it was planted deliberately, maybe by the Town Brough?
77	Pohutukawa (Group of 7)	Queens Park	123, 135, 120, 126, 120, 114, 141	Landscape/Amenity –these trees are mature and in a public and prominent position overlooking the city.
81	Canary Island Date Palm (Group of 17)	Queens Park	138	Landscape/Amenity & Heritage – these trees are mature and in a public and prominent position overlooking the city. They are also an excellent example of the types of vegetation planted by early settlers.
98	Tasmanian Blue Gum	736 Papaiti Road	147	Heritage – this tree is locally known as ‘the hanging tree’ due to an event in the past.