

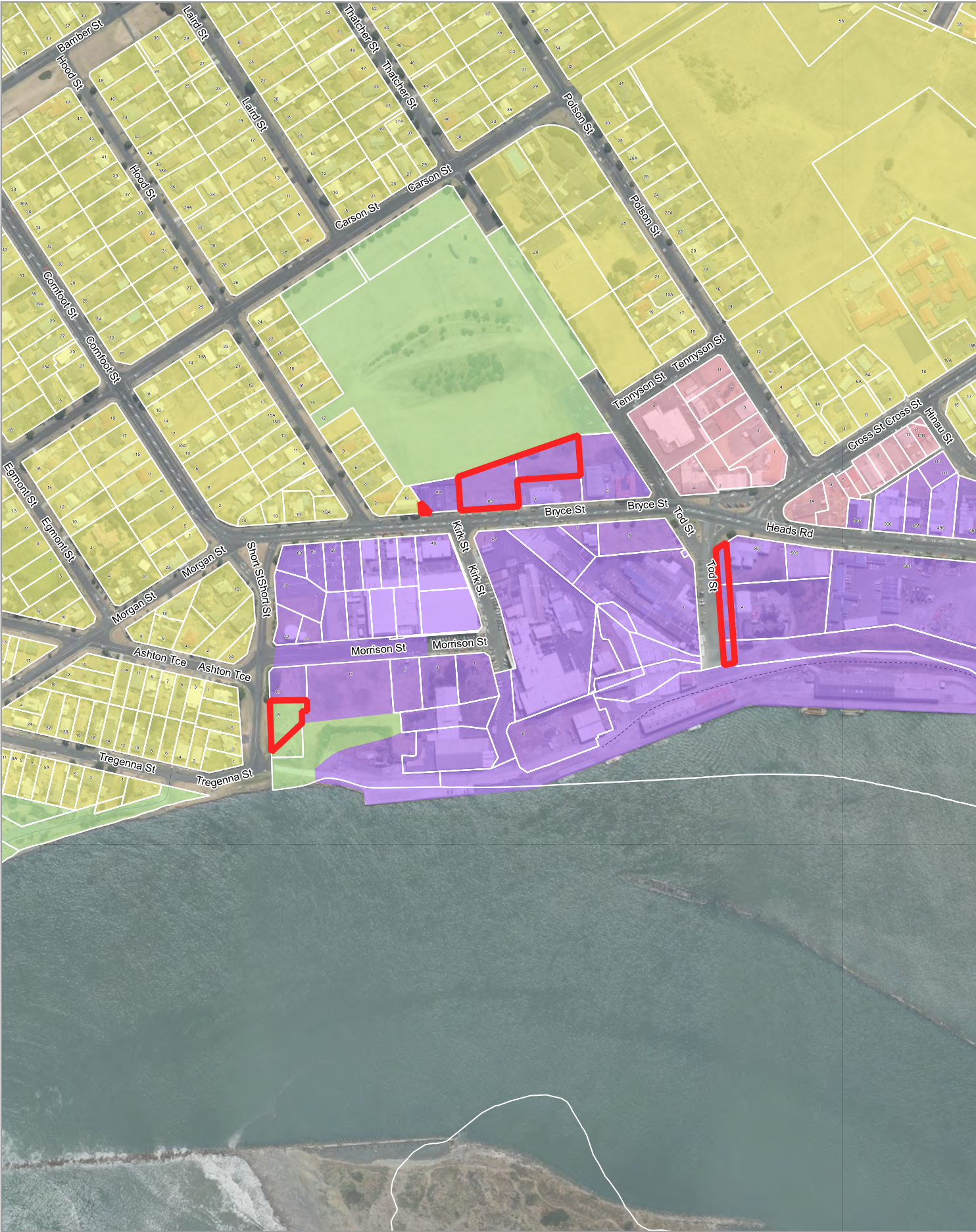


Existing Zones



Date Printed: 2021-02-26

- GRZ - General Residential Zone
- GIZ - General Industrial Zone
- OSZ - Open Space Zone
- COMZ - Neighbourhood Commercial Zone
- GRUZ - General Rural Zone

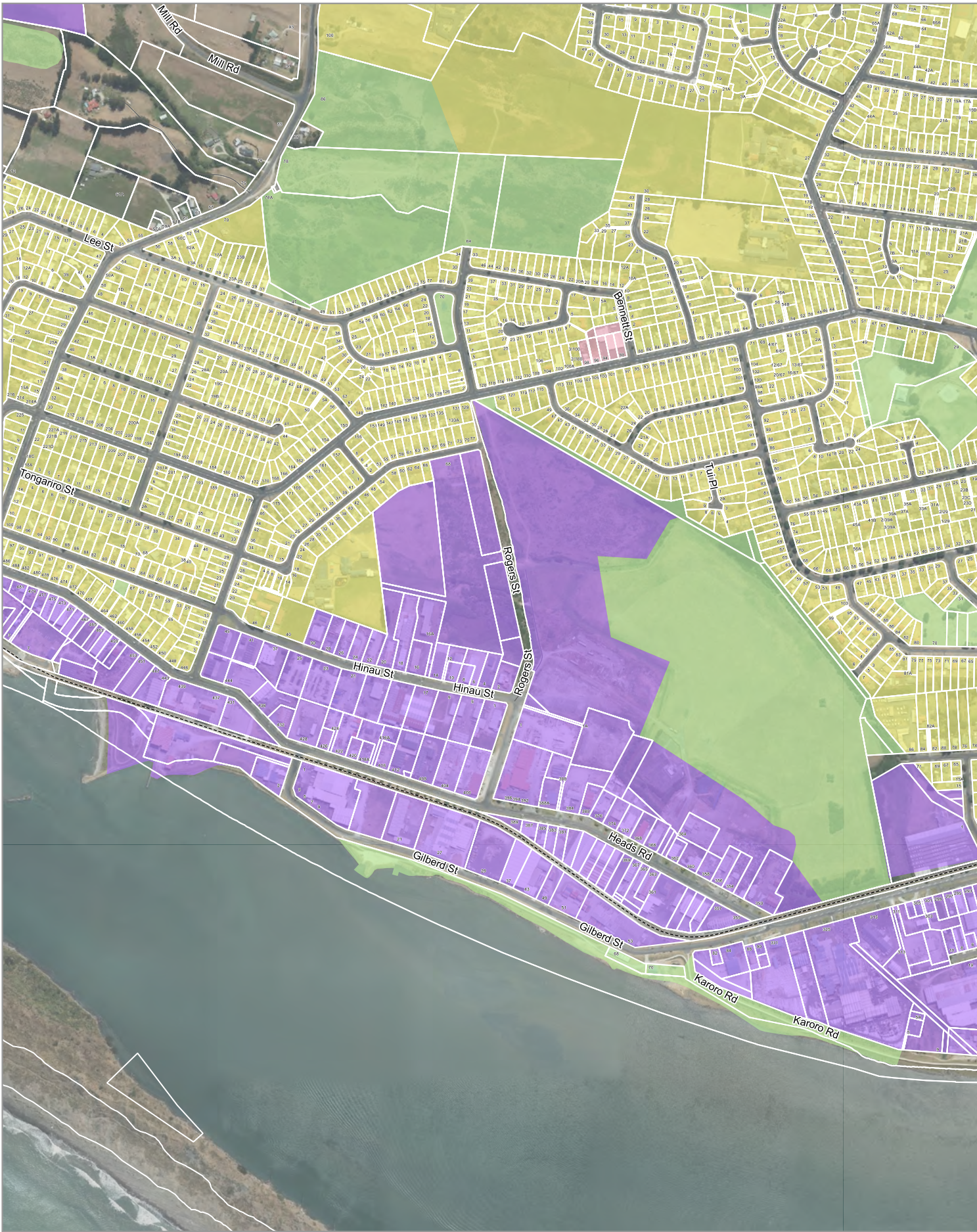


Proposed Zones



8 Short Stret & 11 Morrison Street &
8A & 8B Bryce Street & Tod Street

- GRZ - General Residential Zone
- GIZ - General Industrial Zone
- OSZ - Open Space Zone
- COMZ - Neighbourhood Commercial Zone
- GRUZ - General Rural Zone

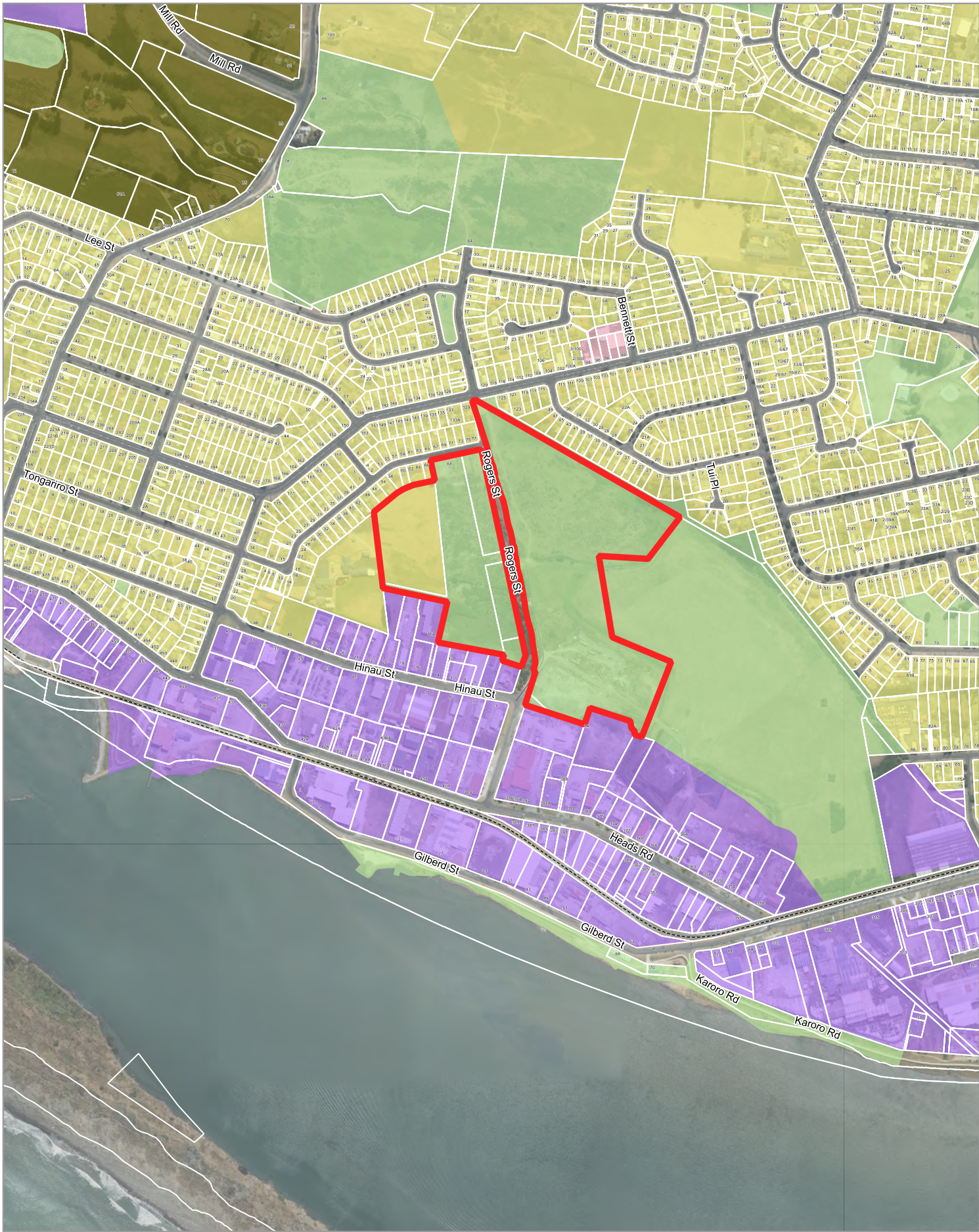


Existing Zones



Date Printed: 2021-02-26

- GRZ - General Residential Zone
- GIZ - General Industrial Zone
- OSZ - Open Space Zone
- COMZ - Neighbourhood Commercial Zone
- GRUZ - General Rural Zone



Proposed Zones



**16 - 36 Matipo Street Castlecliff
(Te Kura O Kokohuia School)
& 66 Matipo (part Kokohuia Reserve)**

- GRZ - General Residential Zone
- GIZ - General Industrial Zone
- OSZ - Open Space Zone
- COMZ - Neighbourhood Commercial Zone
- GRUZ - General Rural Zone



Existing Zones



Date Printed: 2021-02-26

- GRZ - General Residential Zone
- GIZ - General Industrial Zone
- OSZ - Open Space Zone
- COMZ - Neighbourhood Commercial Zone
- GRUZ - General Rural Zone

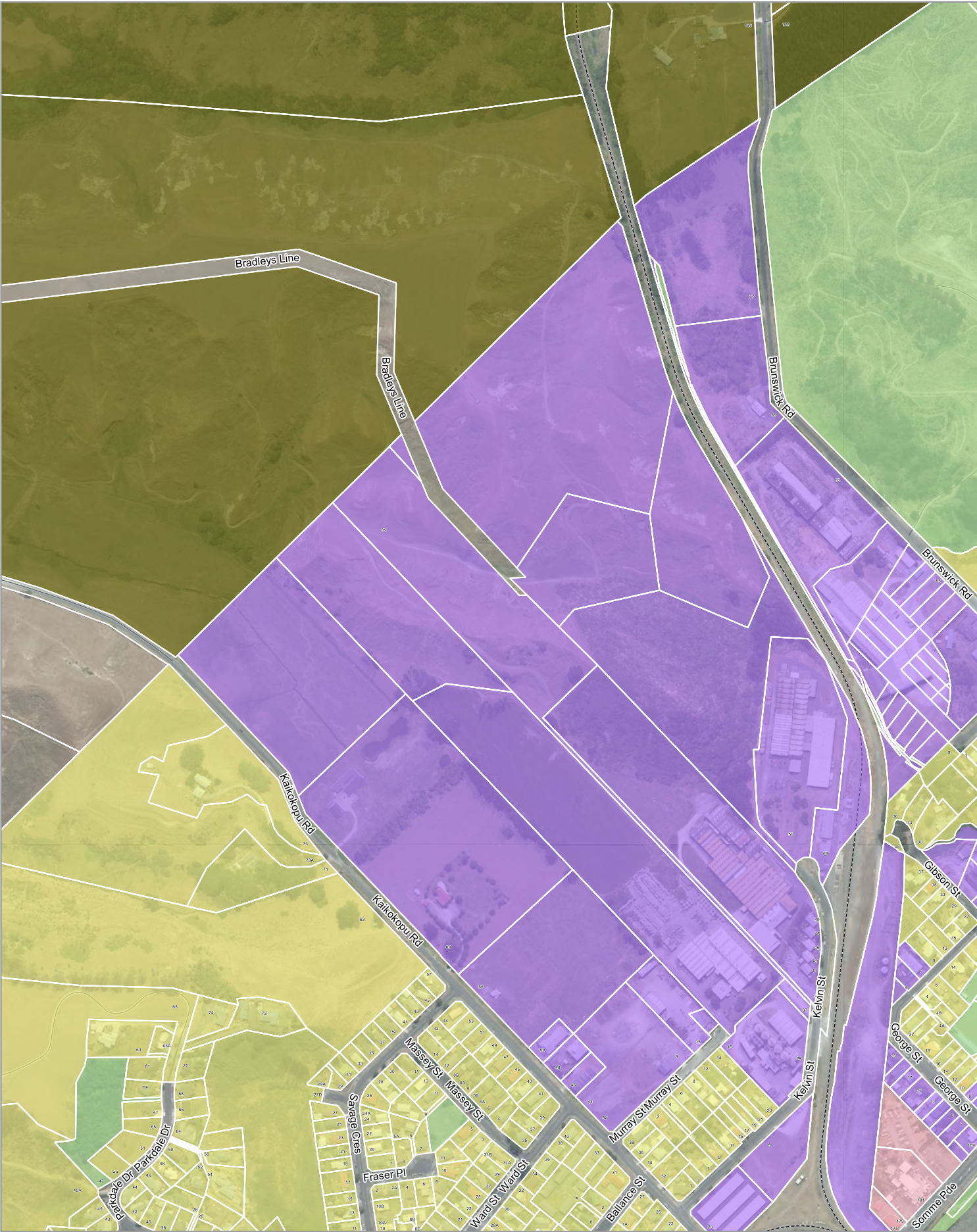


Proposed Zones



34 - 37 Bedford Avenue Rezoning (Gonville)

- GRZ - General Residential Zone
- GIZ - General Industrial Zone
- OSZ - Open Space Zone
- COMZ - Neighbourhood Commercial Zone
- GRUZ - General Rural Zone

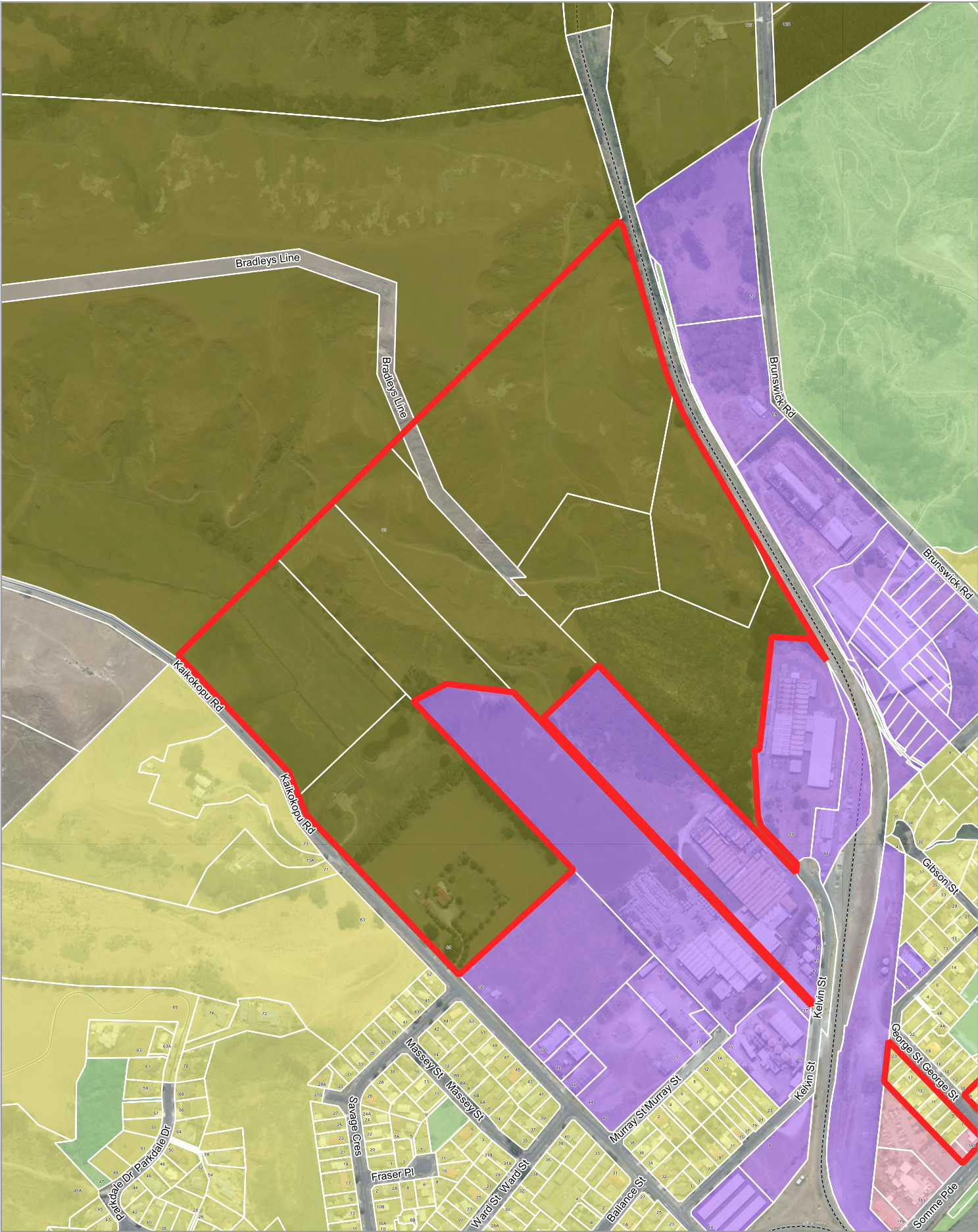


Existing Zones



Date Printed: 2021-02-26

- GRZ - General Residential Zone
- GIZ - General Industrial Zone
- OSZ - Open Space Zone
- COMZ - Neighbourhood Commercial Zone
- GRUZ - General Rural Zone



Proposed Zones



384 Kaikokopu Road

- GRZ - General Residential Zone
- GIZ - General Industrial Zone
- OSZ - Open Space Zone
- COMZ - Neighbourhood Commercial Zone
- GRUZ - General Rural Zone



Existing Zones



Date Printed: 2021-02-26

- GRZ - General Residential Zone
- GIZ - General Industrial Zone
- OSZ - Open Space Zone
- COMZ - Neighbourhood Commercial Zone
- GRUZ - General Rural Zone

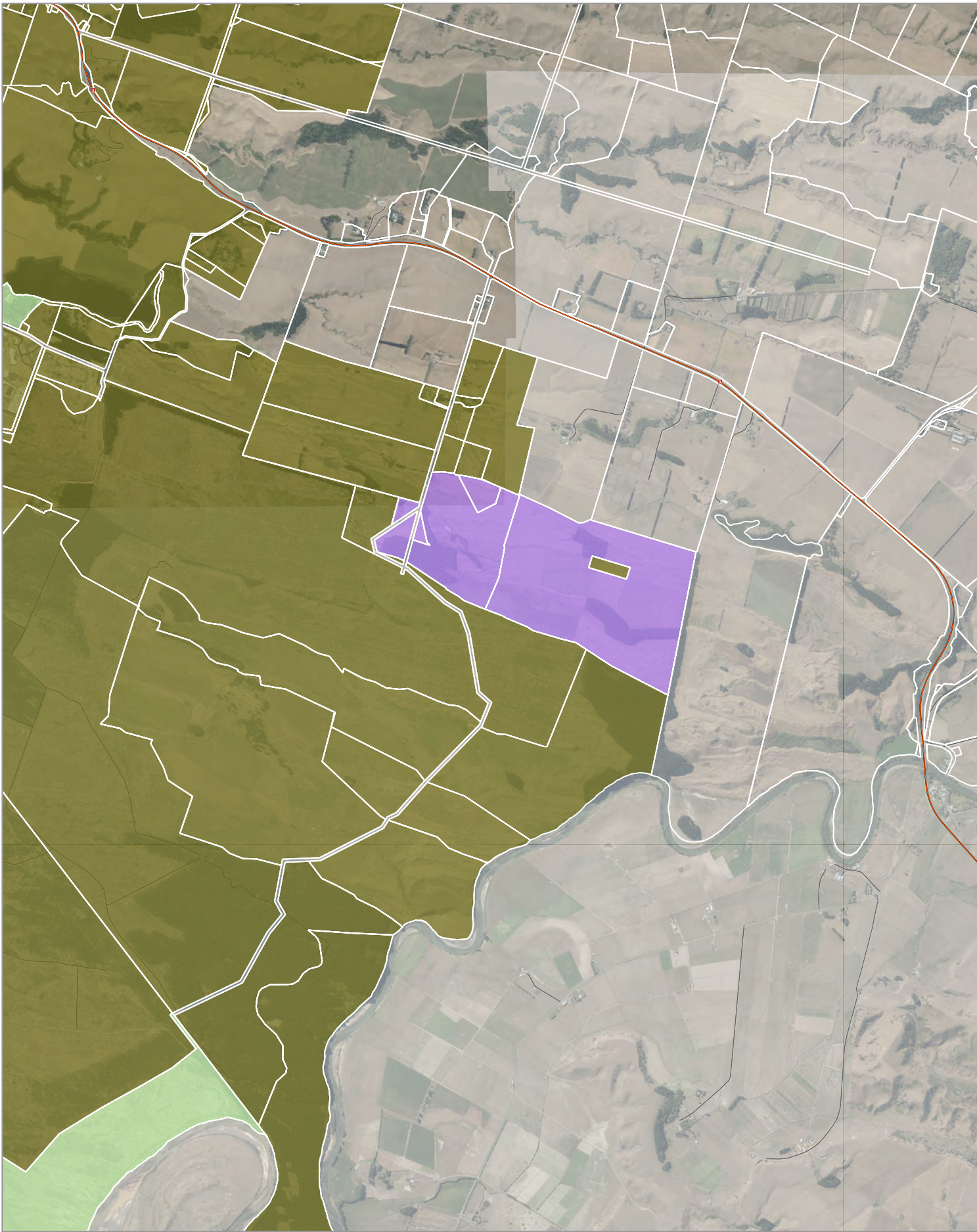


Proposed Zones



George & Gibson Street

- GRZ - General Residential Zone
- GIZ - General Industrial Zone
- OSZ - Open Space Zone
- COMZ - Neighbourhood Commercial Zone
- GRUZ - General Rural Zone

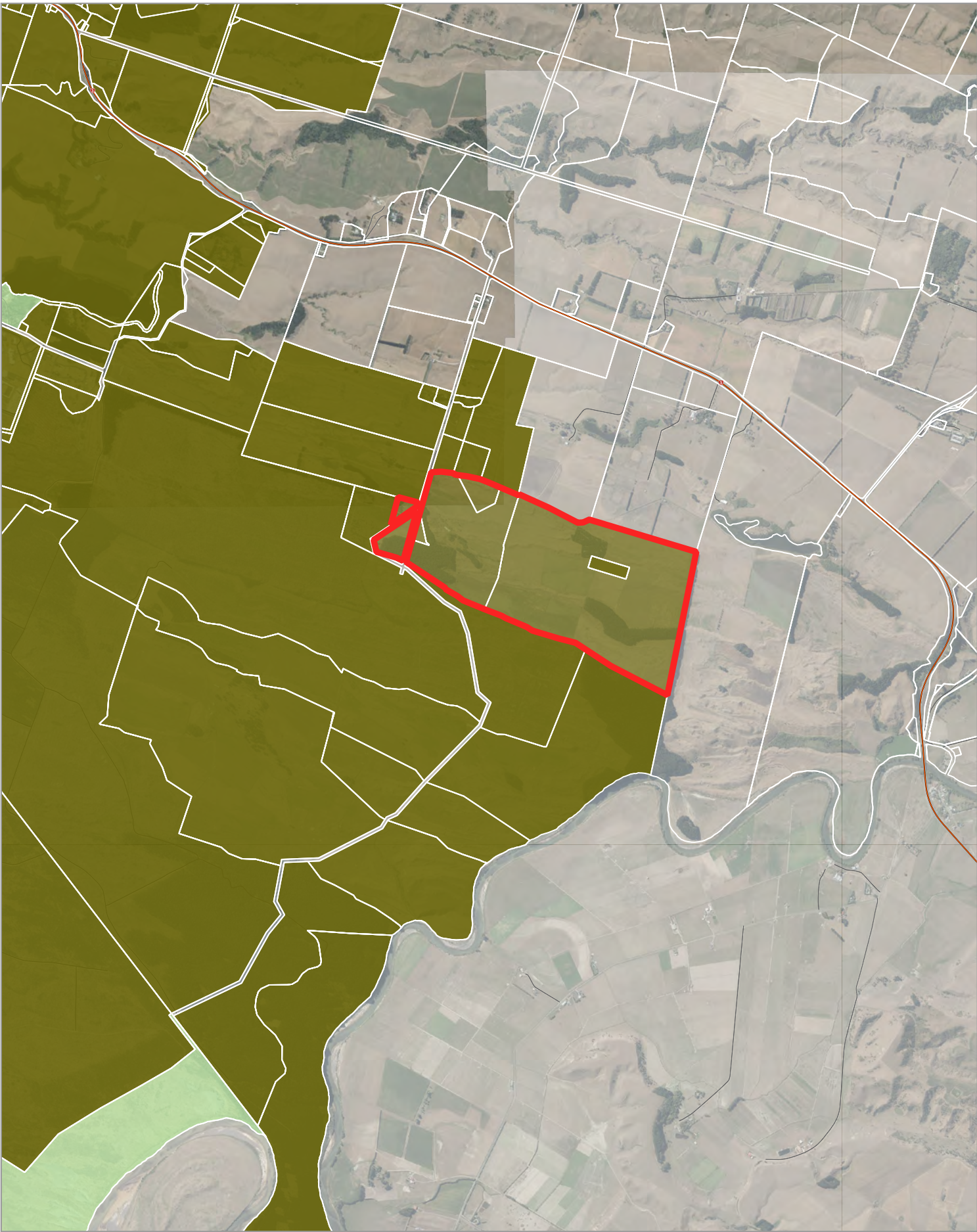


Existing Zones



Date Printed: 2021-02-26

- GRZ - General Residential Zone
- GIZ - General Industrial Zone
- OSZ - Open Space Zone
- COMZ - Neighbourhood Commercial Zone
- GRUZ - General Rural Zone



Proposed Zones



Marangai Road

- GRZ - General Residential Zone
- GIZ - General Industrial Zone
- OSZ - Open Space Zone
- COMZ - Neighbourhood Commercial Zone
- GRUZ - General Rural Zone



Existing Zones



Date Printed: 2021-02-26

- GRZ - General Residential Zone
- GIZ - General Industrial Zone
- OSZ - Open Space Zone
- COMZ - Neighbourhood Commercial Zone
- GRUZ - General Rural Zone



Proposed Zones



31 - 34 London Street (St Mary's School)

- GRZ - General Residential Zone
- GIZ - General Industrial Zone
- OSZ - Open Space Zone
- COMZ - Neighbourhood Commercial Zone
- GRUZ - General Rural Zone