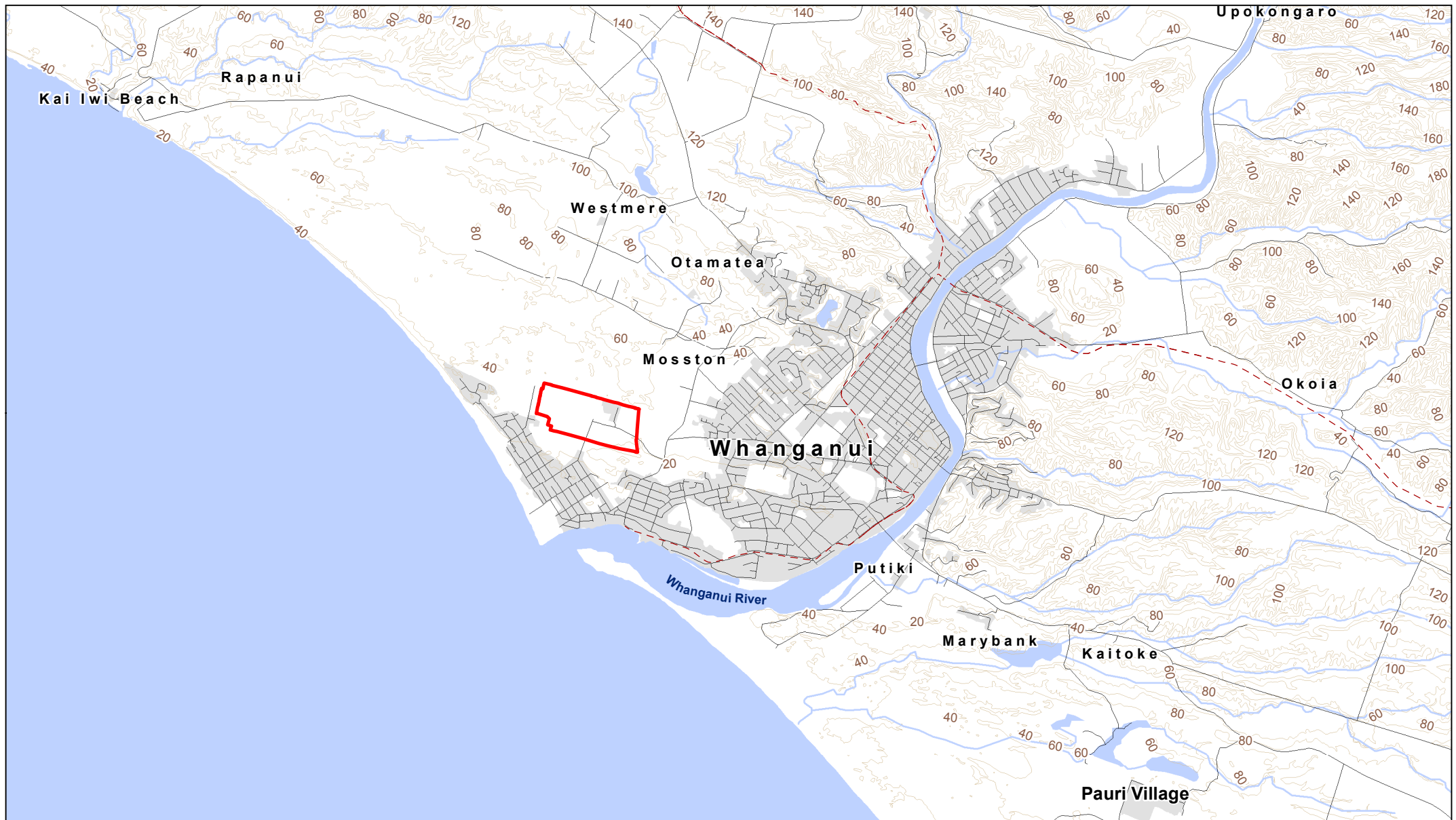
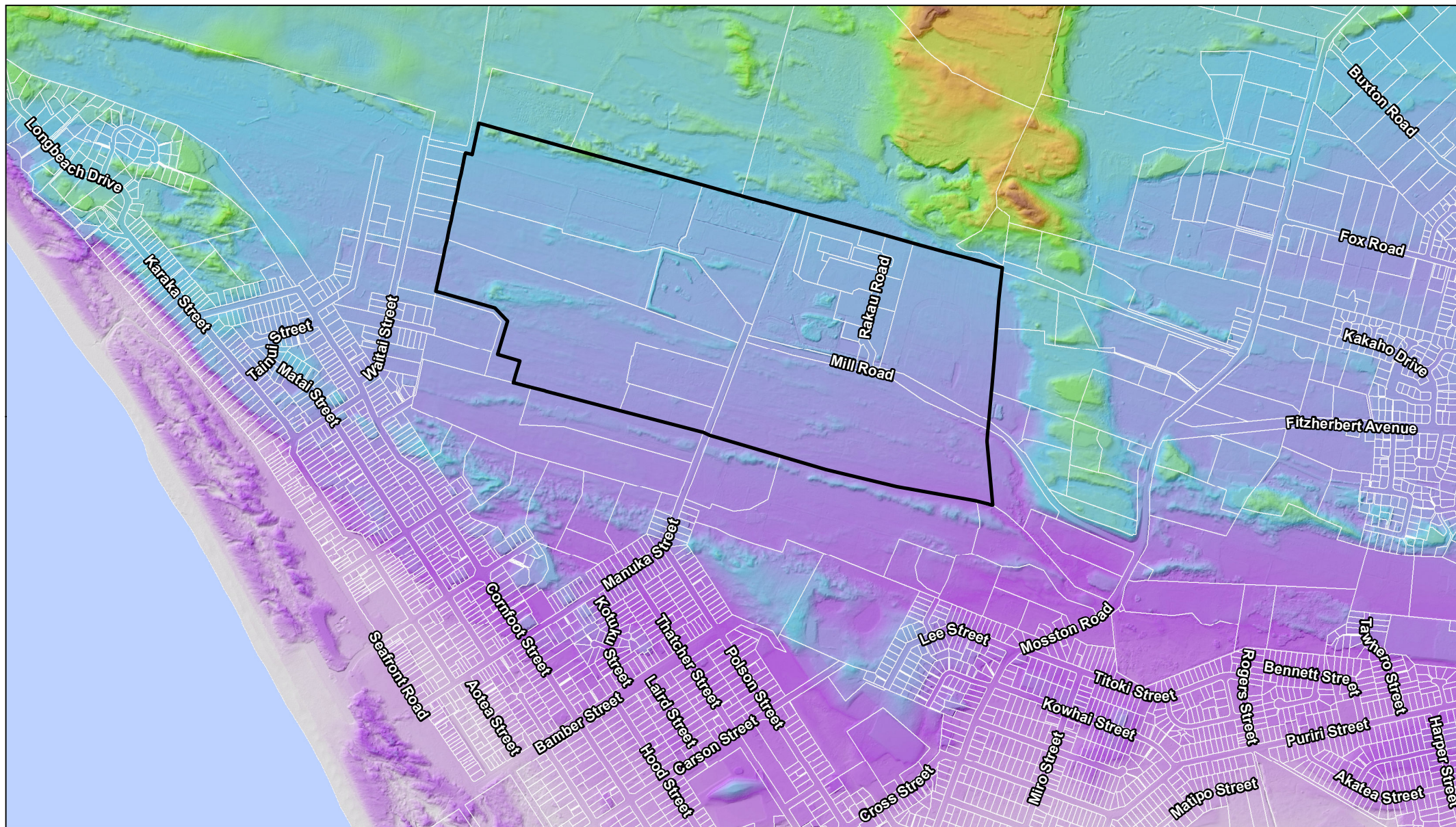
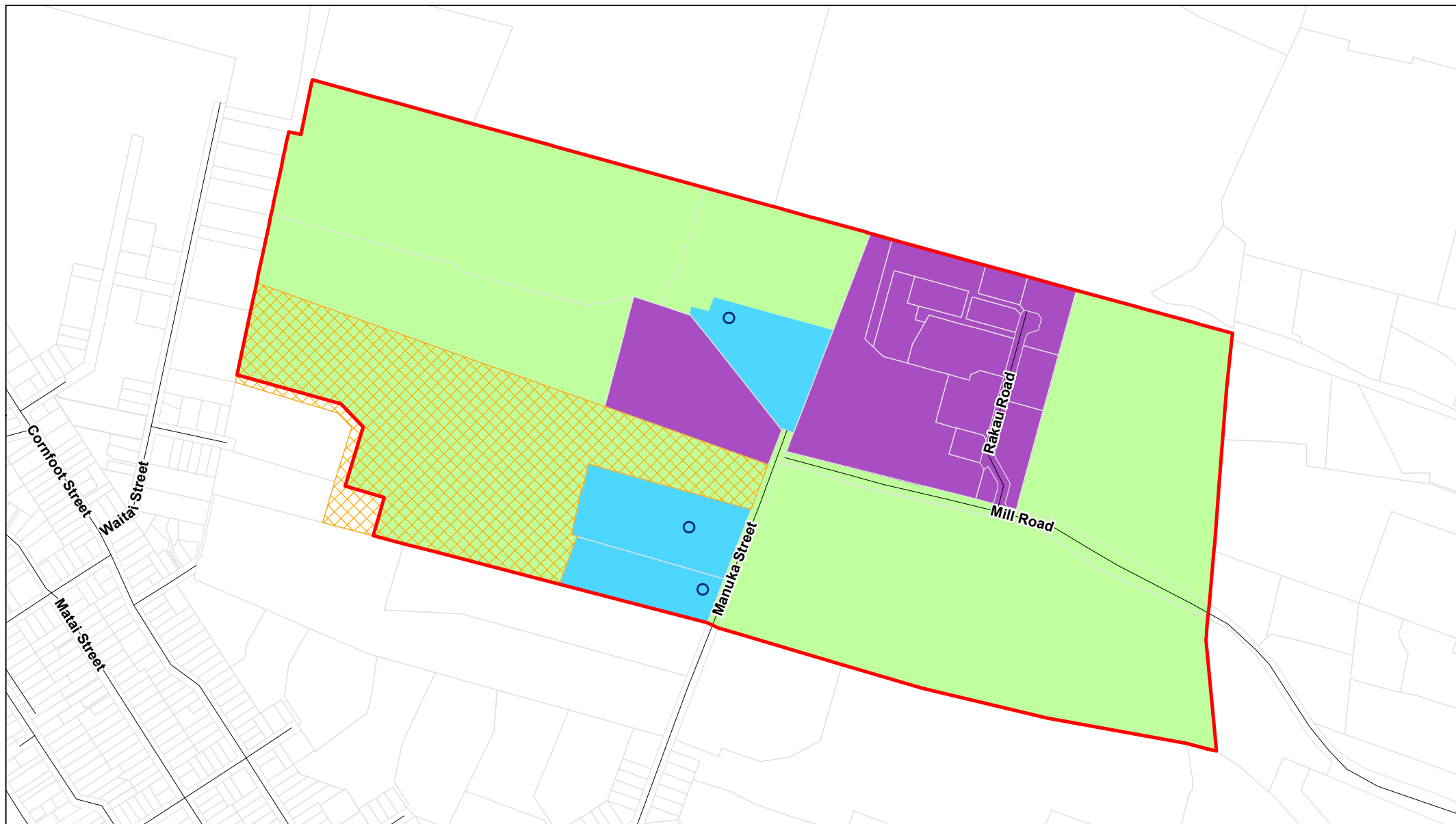


Appendix A – Figures

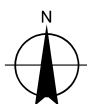






Paper Size A4
0 50 100 200
Metres

Map Projection: Transverse Mercator
Horizontal Datum: NZGD 2000
Grid: NZGD 2000 New Zealand Transverse Mercator



LEGEND

- Structure plan area
- Council owned land
- Property boundary

- Roads
- Approximate dwelling location

On-site land uses

- Agricultural / pastoral
- Current or serviced industrial lots
- Rural residential lots



Whanganui District Council
Mill Road Structure Plan

Job Number | 51-37446
Revision | A
Date | 31 Aug 2018

On-site Land Use

Figure 8

N:\NZ\Wellington\Projects\51\37446\GIS\Maps\Deliverables\StructurePlan\Appendices\51_37446_2006_APPENDIX_OnSiteLandUse.mxd

Level 1, Grant Thornton House, 215 Lambton Quay, Wellington 6140 New Zealand T +64 4 472 0799 F +64 4 472 0833 W www.ghd.com

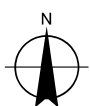
© 2018. Whilst every care has been taken to prepare this map, GHD (and LINZ, Land Care Research, WDC, ESRI) make no representations or warranties about its accuracy, reliability, completeness or suitability for any particular purpose and cannot accept liability and responsibility of any kind (whether in contract, tort or otherwise) for any expenses, losses, damages and/or costs (including indirect or consequential damage) which are or may be incurred by any party as a result of the map being inaccurate, incomplete or unsuitable in any way and for any reason.

Data source: General topo - LINZ 2017 & Land Care Research; SW and other utility data - WDC; Aerial imagery - LINZ, WDC, ESRI 2018. Created by:jprice



Paper Size A4
0 50 100 200
Metres

Map Projection: Transverse Mercator
Horizontal Datum: NZGD 2000
Grid: NZGD 2000 New Zealand Transverse Mercator



LEGEND

- Structure plan area
- Property boundary
- Dwellings



Whanganui District Council
Mill Road Structure Plan

Job Number 51-37446
Revision A
Date 31 Aug 2018

Site surrounds

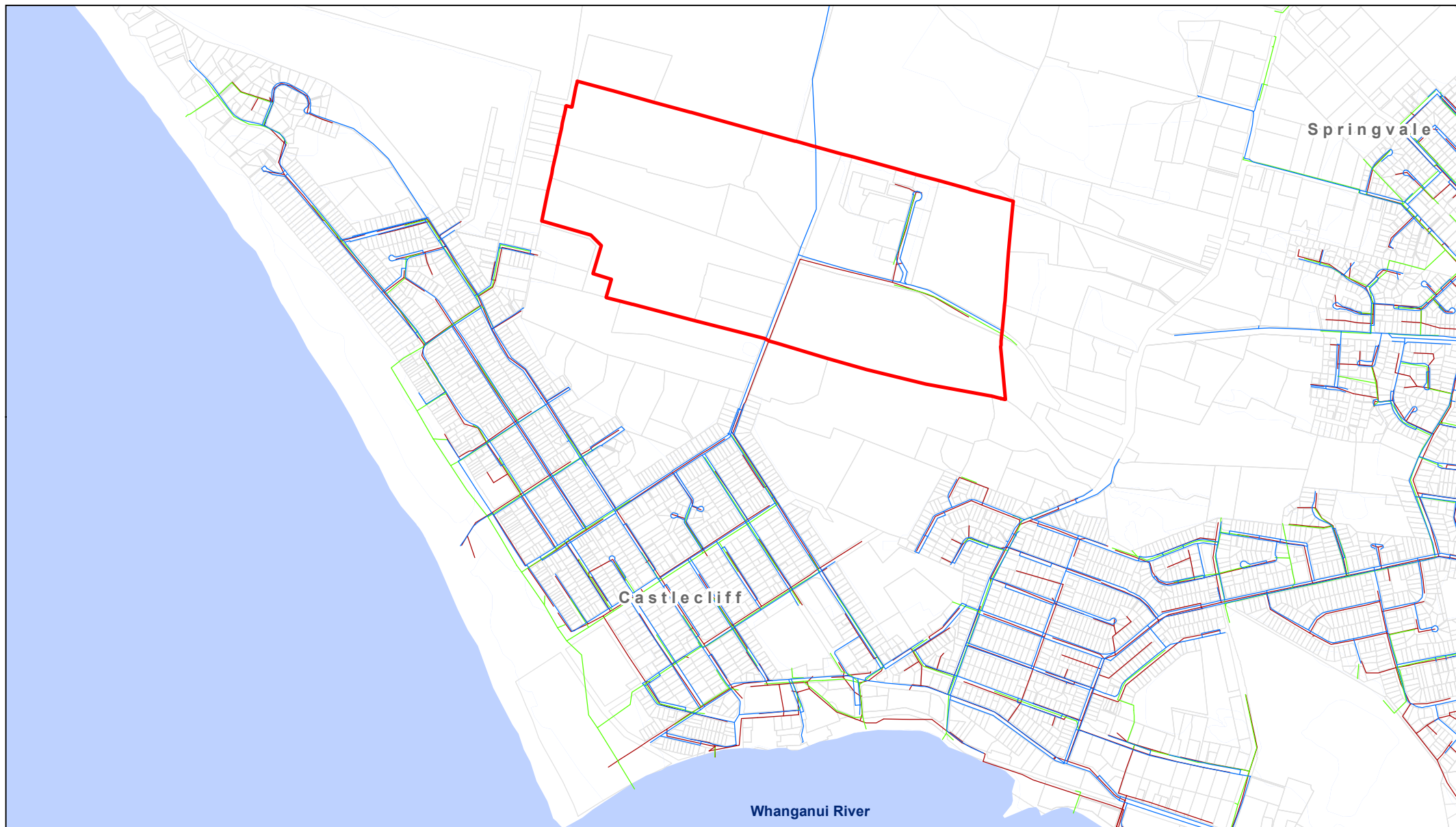
Figure 9

N:\NZ\Wellington\Projects\51\37446\GIS\Maps\Deliverables\StructurePlan\Appendices\51_37446_2007_APPENDIX_NeighbouringDwellings.mxd

Level 1, Grant Thornton House, 215 Lambton Quay, Wellington 6140 New Zealand T +64 4 472 0799 F +64 4 472 0833 W www.ghd.com

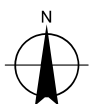
© 2018. Whilst every care has been taken to prepare this map, GHD (and LINZ, Land Care Research, WDC, ESRI) make no representations or warranties about its accuracy, reliability, completeness or suitability for any particular purpose and cannot accept liability and responsibility of any kind (whether in contract, tort or otherwise) for any expenses, losses, damages and/or costs (including indirect or consequential damage) which are or may be incurred by any party as a result of the map being inaccurate, incomplete or unsuitable in any way and for any reason.

Data source: General topo - LINZ 2017 & Land Care Research; SW and other utility data - WDC; Aerial imagery - LINZ, WDC, ESRI 2018. Created by:jprice



Paper Size A4
0 100 200 400
Metres

Map Projection: Transverse Mercator
Horizontal Datum: NZGD 2000
Grid: NZGD 2000 New Zealand Transverse Mercator



LEGEND

- Structure plan area
- Property boundary
- Water pipes
- Stormwater pipes
- Wastewater pipes



Whanganui District Council
Mill Road Structure Plan

Job Number 51-37446
Revision A
Date 31 Aug 2018

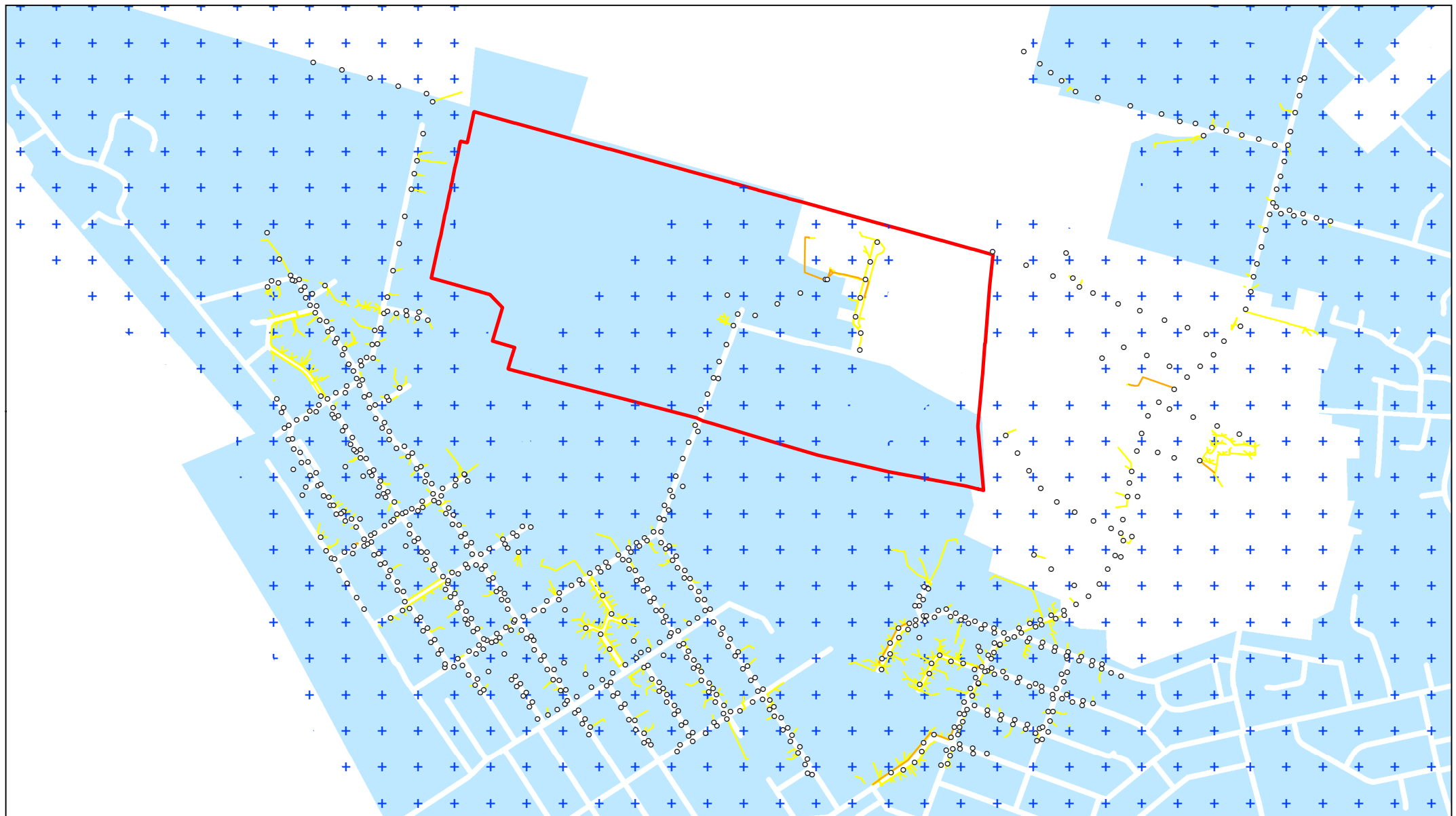
Existing three waters infrastructure **Figure 11**

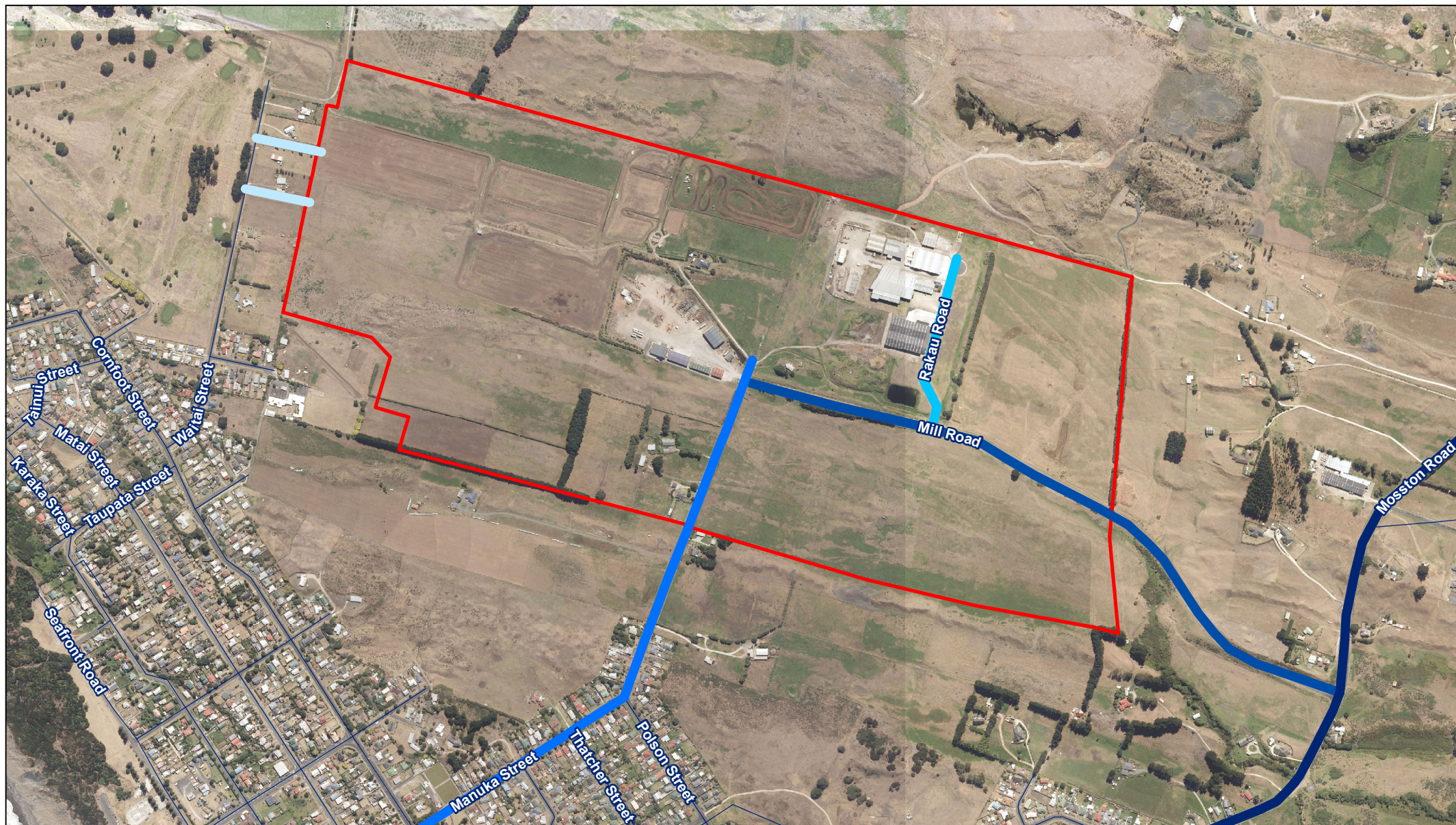
N:\NZ\Wellington\Projects\51\37446\GIS\Maps\Deliverables\StructurePlan\Appendices\51_37446_2005_APPENDIX_3waters.mxd

Level 1, Grant Thornton House, 215 Lambton Quay, Wellington 6140 New Zealand T +64 4 472 0799 F +64 4 472 0833 W www.ghd.com

© 2018. Whilst every care has been taken to prepare this map, GHD (and LINZ, Land Care Research, WDC, ESRI) make no representations or warranties about its accuracy, reliability, completeness or suitability for any particular purpose and cannot accept liability and responsibility of any kind (whether in contract, tort or otherwise) for any expenses, losses, damages and/or costs (including indirect or consequential damage) which are or may be incurred by any party as a result of the map being inaccurate, incomplete or unsuitable in any way and for any reason.

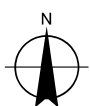
Data source: General topo - LINZ 2017 & Land Care Research; SW and other utility data - WDC; Aerial imagery - LINZ, WDC, ESRI 2018. Created by:jprice





Paper Size A4
0 50 100 200
Metres

Map Projection: Transverse Mercator
Horizontal Datum: NZGD 2000
Grid: NZGD 2000 New Zealand Transverse Mercator



LEGEND

Structure plan area
 Roads

Access

Arterial road
 Collector road

Connector road

Local road

Waitai Road lot access



Whanganui District Council
Mill Road Structure Plan

Job Number 51-37446
Revision A
Date 31 Aug 2018

Transport connections
to and within the zone

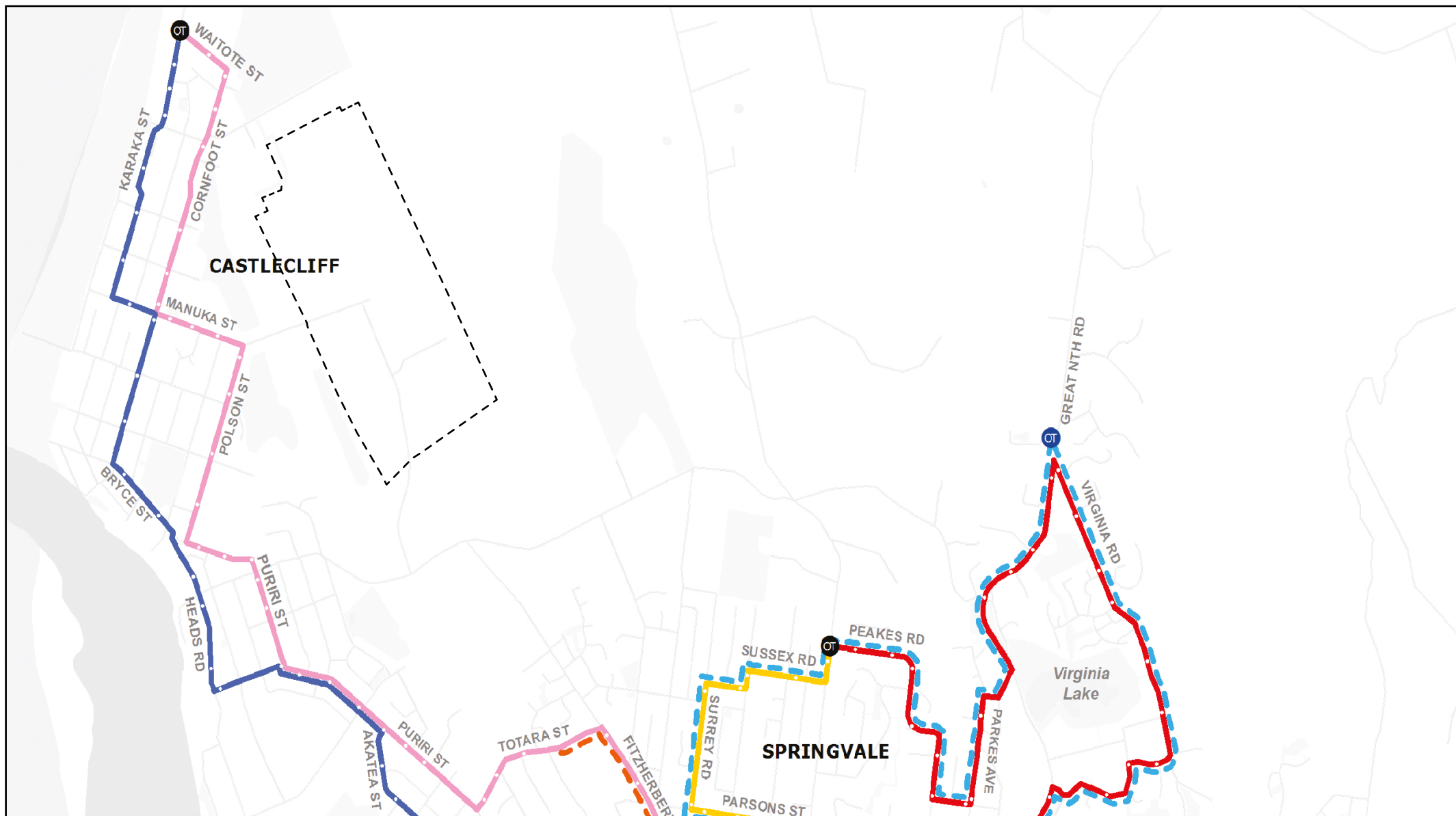
Figure 15

N:\NZ\Wellington\Projects\51\37446\GIS\Maps\Deliverables\StructurePlan\Appendices\51_37446_2009_APPENDIX_Access.mxd

Level 1, Grant Thornton House, 215 Lambton Quay, Wellington 6140 New Zealand T +64 4 472 0799 F +64 4 472 0833 W www.ghd.com

© 2018. Whilst every care has been taken to prepare this map, GHD (and LINZ, Land Care Research, WDC, ESRI) make no representations or warranties about its accuracy, reliability, completeness or suitability for any particular purpose and cannot accept liability and responsibility of any kind (whether in contract, tort or otherwise) for any expenses, losses, damages and/or costs (including indirect or consequential damage) which are or may be incurred by any party as a result of the map being inaccurate, incomplete or unsuitable in any way and for any reason.

Data source: General topo - LINZ 2017 & Land Care Research; SW and other utility data - WDC; Aerial imagery - LINZ, WDC, ESRI 2018. Created by:jprice



LEGEND



Structure plan area



Bus stop



Outer terminal



Outer terminal (Combined Saturday)

1 Castlecliff

2 Castlecliff

3 Springvale / St Johns Hill

4 Springvale / St Johns Hill

8 Aramoho 7:30 (Mon-Fri school terms only)

Combined Saturday

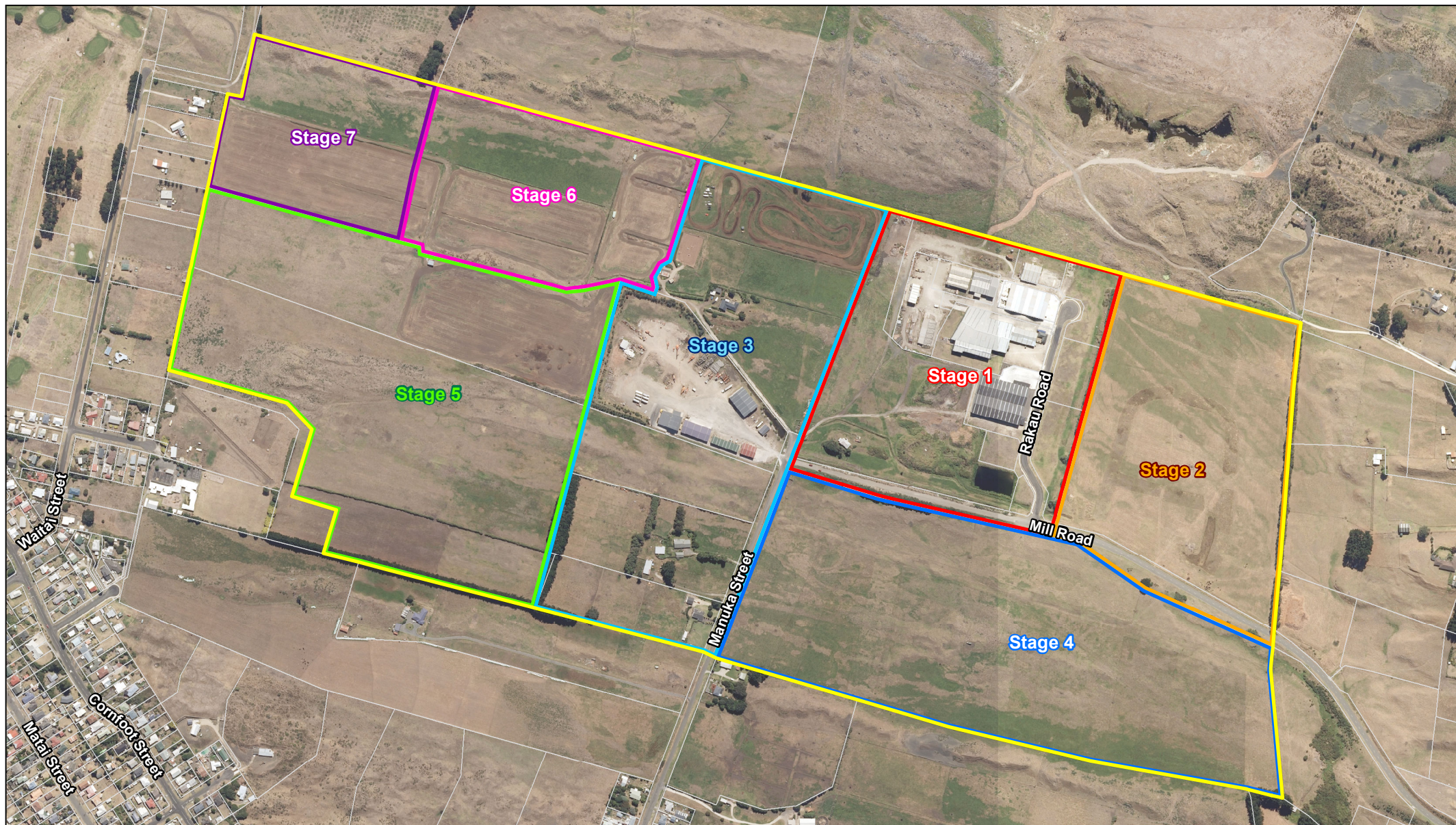


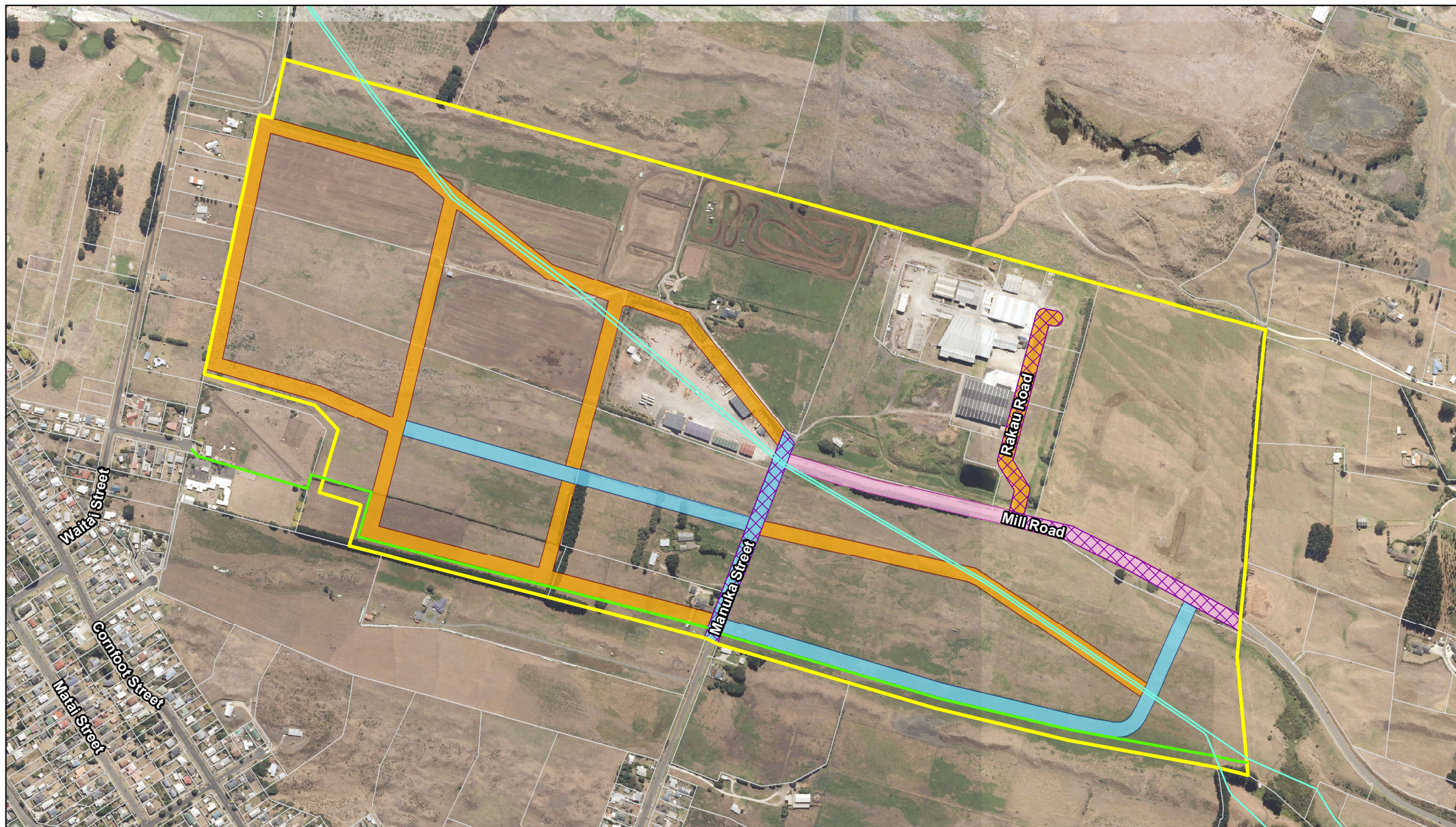
Whanganui District Council
Mill Road Structure Plan

Job Number 51-37446
Revision A
Date 28 Aug 2018

Nearby bus services

Figure 17

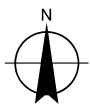






Paper Size A4
0 50 100 200
Metres

Map Projection: Transverse Mercator
Horizontal Datum: NZGD 2000
Grid: NZGD 2000 New Zealand Transverse Mercator



LEGEND

- Structure plan area
- Proposed shared path
- Property boundary



Whanganui District Council
Mill Road Structure Plan

Job Number | 51-37446
Revision | A
Date | 31 Aug 2018

Proposed shared path location

Figure 22

N:\NZ\Wellington\Projects\51\37446\GIS\Maps\Deliverables\StructurePlan\Appendices\51_37446_2022_APPENDIX_SharedPathSchoolConnection.mxd

Level 1, Grant Thornton House, 215 Lambton Quay, Wellington 6140 New Zealand T +64 4 472 0799 F +64 4 472 0833 W www.ghd.com

© 2018. Whilst every care has been taken to prepare this map, GHD (and LINZ, Land Care Research, WDC, ESRI) make no representations or warranties about its accuracy, reliability, completeness or suitability for any particular purpose and cannot accept liability and responsibility of any kind (whether in contract, tort or otherwise) for any expenses, losses, damages and/or costs (including indirect or consequential damage) which are or may be incurred by any party as a result of the map being inaccurate, incomplete or unsuitable in any way and for any reason.

Data source: General topo - LINZ 2017 & Land Care Research; SW and other utility data - WDC; Aerial imagery - LINZ, WDC, ESRI 2018. Created by:jprice