



MINISTRY OF EDUCATION

Te Tūhuru o te Mātauranga

National Office

Schools Infrastructure Group
45-47 Pipitea Street
Thorndon
PO Box 1666
Wellington
New Zealand

Phone: 0-4-463 8000
Direct: 04 4637073
www.minedu.govt.nz

Rachael Pull
Wanganui District Council
101 Guyton street
PO Box 637
WANGANUI 4540

Wanganui District Plan Review- Rollover of Designations

I am writing to confirm that I wish to rollover all the existing Education Designations contained in the Wanganui District Plan without modifications.

Please note the only exception to this request is Designation Numbers D11 and D12, from the current Schedule of Designations, which relates to UCOL. These sites are not managed by the Minister of Education and therefore we request that this designation be uplifted.

Please note that there have been some minor amendments to the legal descriptions of some of the sites. The full details of each site can be found in the attached table and maps.

It is requested that 'Minister of Education' be recorded as the requiring authority in the Schedule of Designations as that is the appropriate authority pursuant to section 166 of the Resource Management Act 1991 (as a Minister of the Crown).

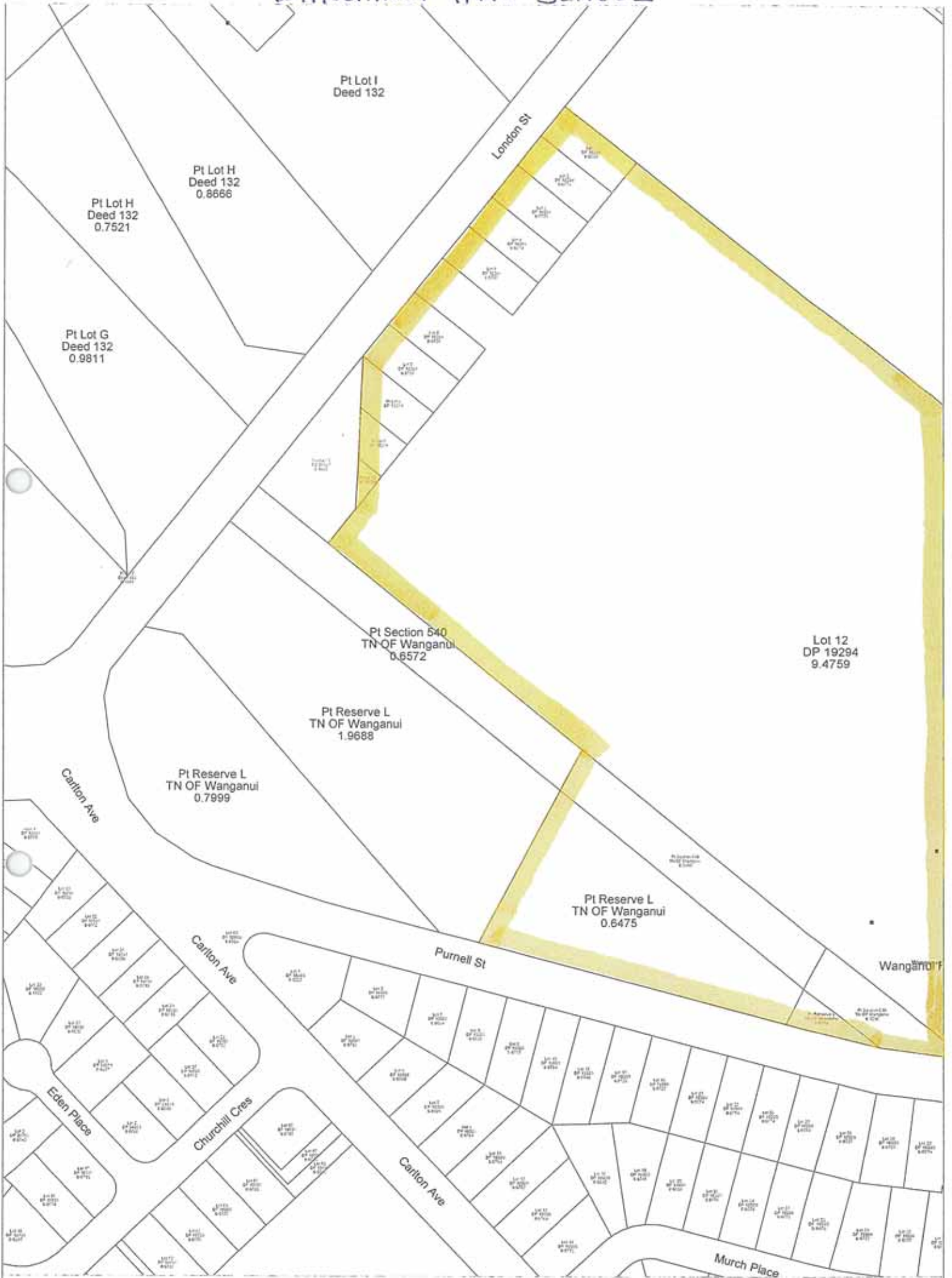
It is requested that the 'designating purpose' of all the sites should read as 'Educational Purposes' to ensure consistency within the Schedule. This will also reflect my desire to gain national consistency and greater clarity in terminology across the country for all sites in all territorial authorities.

If you have any further questions, please contact the Minister of Education's agent, Susan Jones of Opus Consultants in Wanganui on 06 349 6600.

Yours sincerely

Kim Shannon
General Manager
Schools Infrastructure Group
Ministry of Education

WANGANUI HIGH SCHOOL



WANGANUI CITY COLLEGE - Amended Jan 2013



Wanganui East

Duncan St

Milward St

15' sewer

Richmond St

15' sewer

Anzac Pde

Pt Lot 3
Application Plan 675
The Board of Governors more...

Pt Lot 1
DP 837
The Board of Governors more...

Pt Lot 2
DP 837
The Board of Governors more...

Pt Lot 3
DP 837
The Board of Governors more...

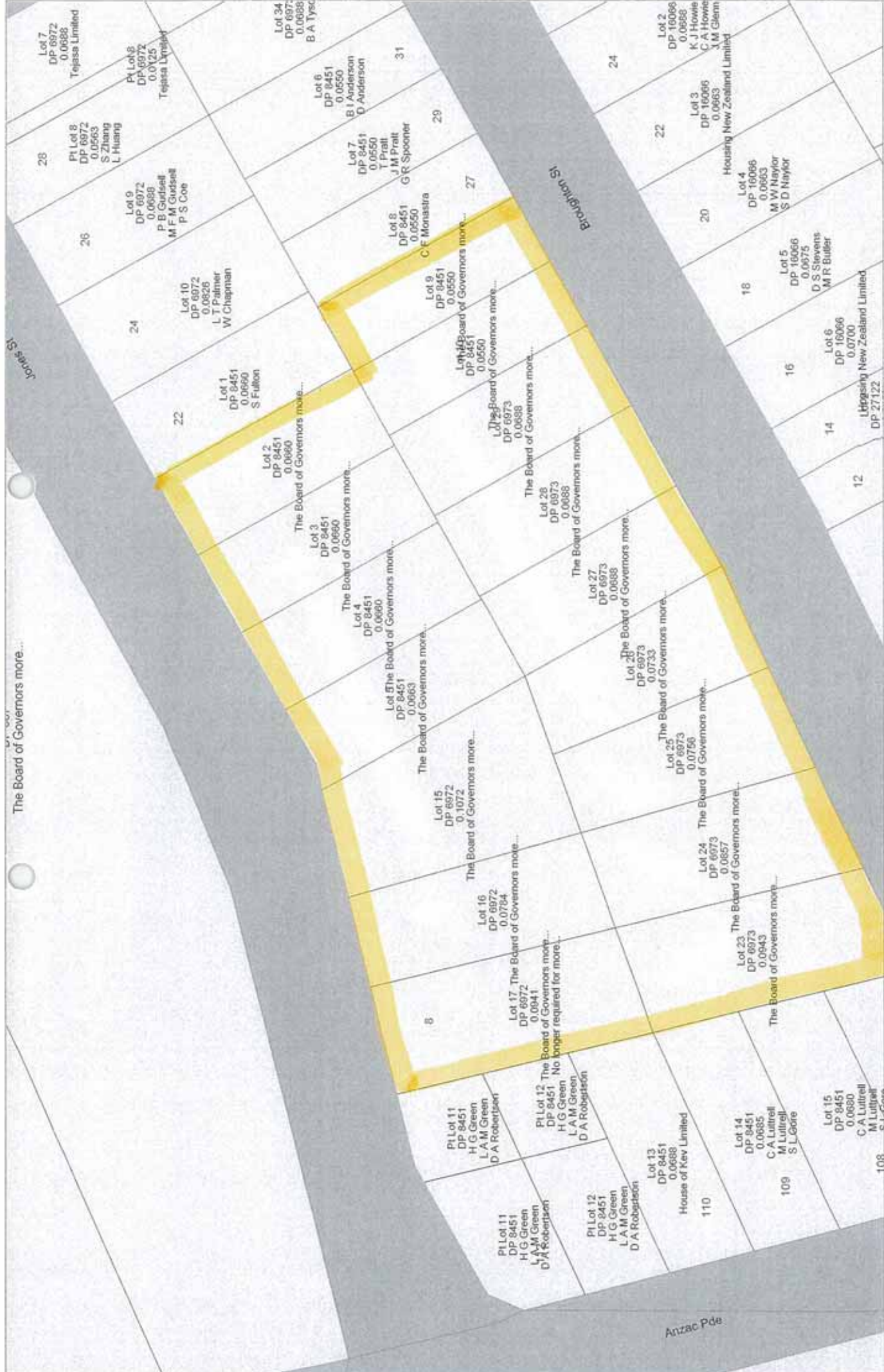
Lot 2
DP 12357
0.3275

The Wanganui City Council
The Wanganui Harbour Board

Girls College (p1)



Any person wishing to rely on the information shown on this map must independently verify the information
Scale 1:1628 Topographical and Cadastral map derived from LINZ data. Printed: 8/01/2013 16:45.



Girls College (192)



Any person wishing to rely on the information shown on this map must independently verify the information
 Scale 1:887 Topographical and Cadastral map derived from LINZ data. Printed: 8/01/2013 16:36.

ABERFELDY PRIMARY

Section 3
Blk V Mangawhero SD
1.8301

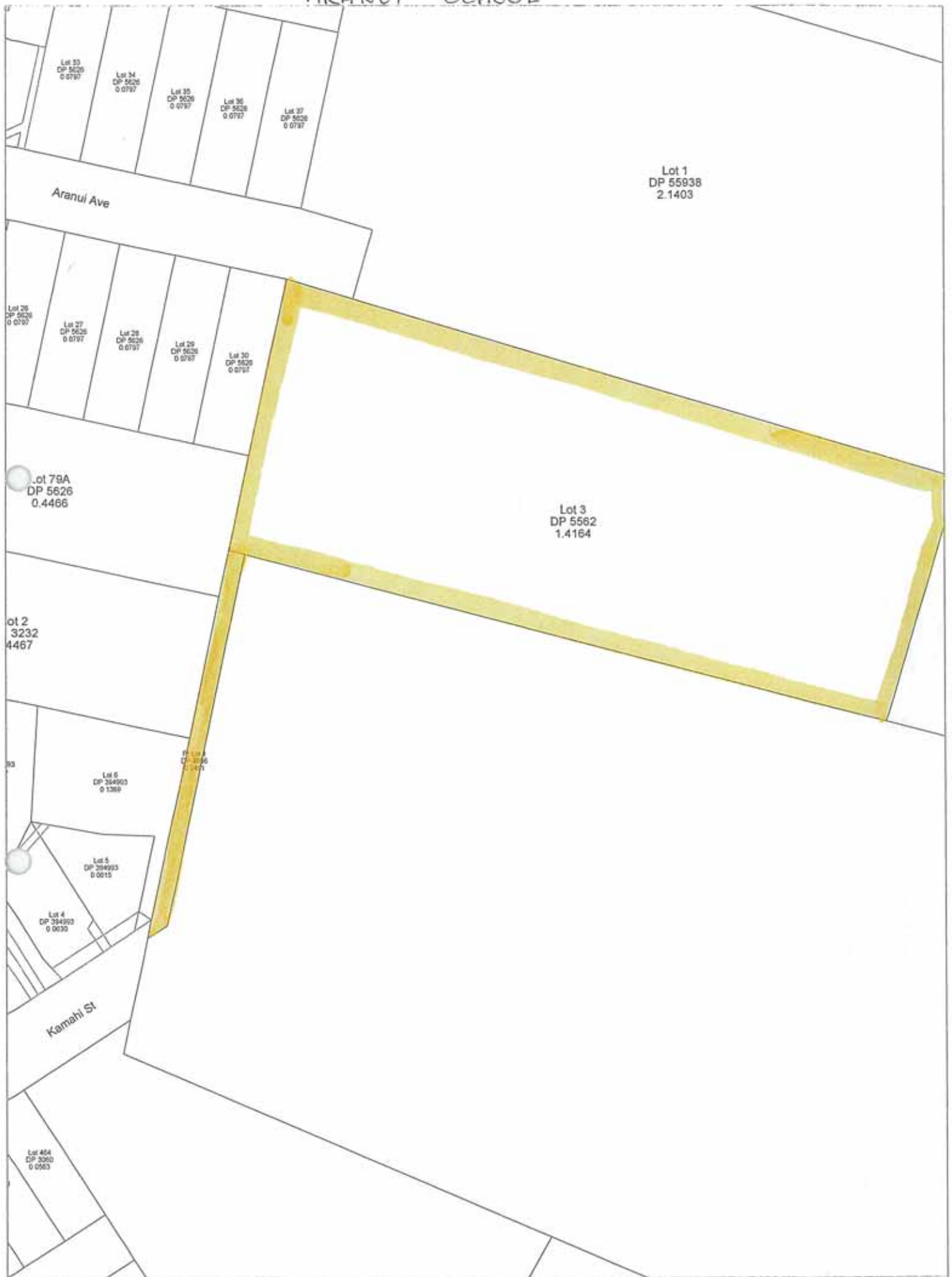
Pt Pukohu
1.1905

Pt Pukohu
0.2777

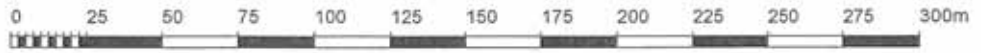
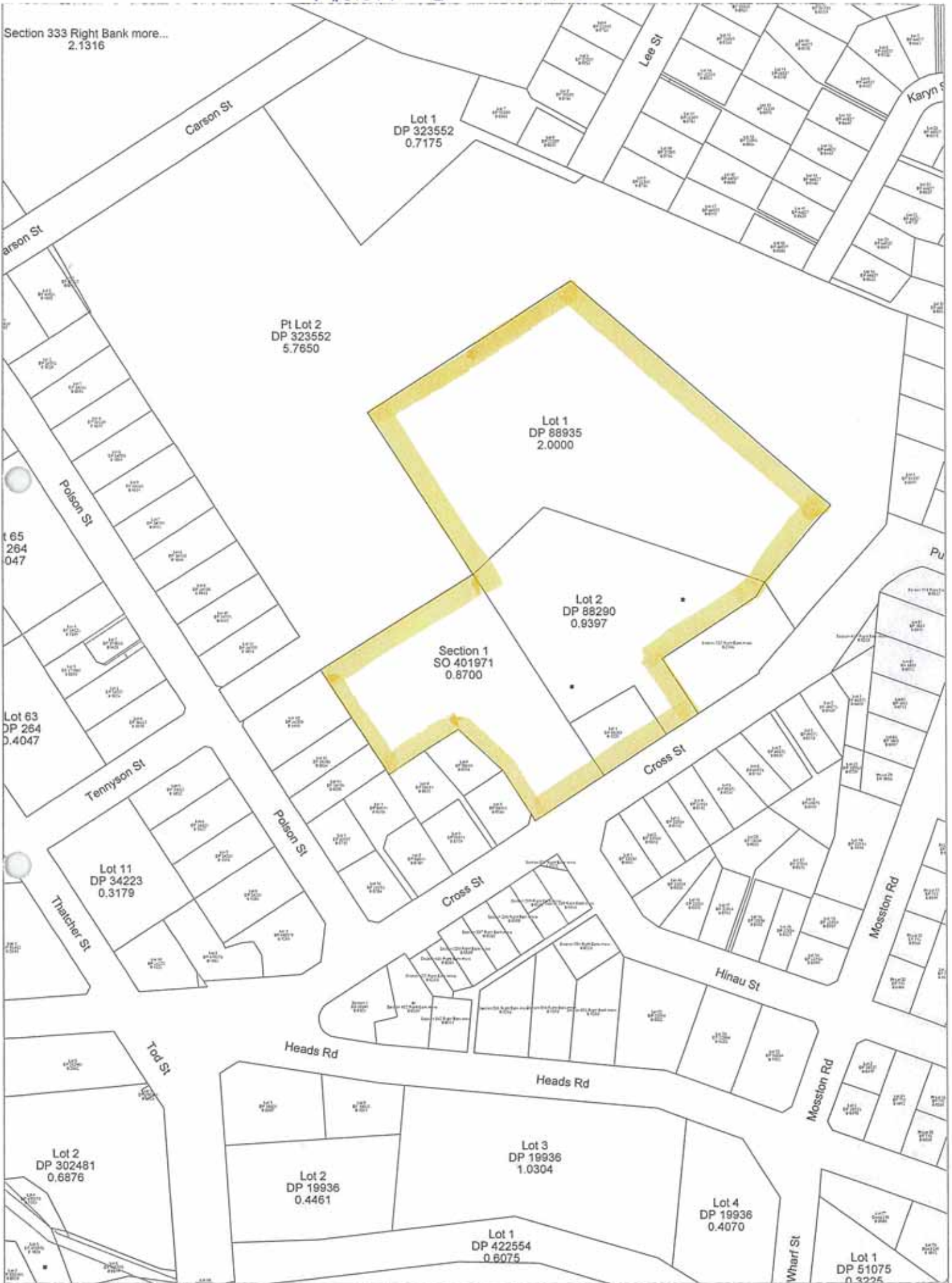
Sh 4



ARANUI SCHOOL



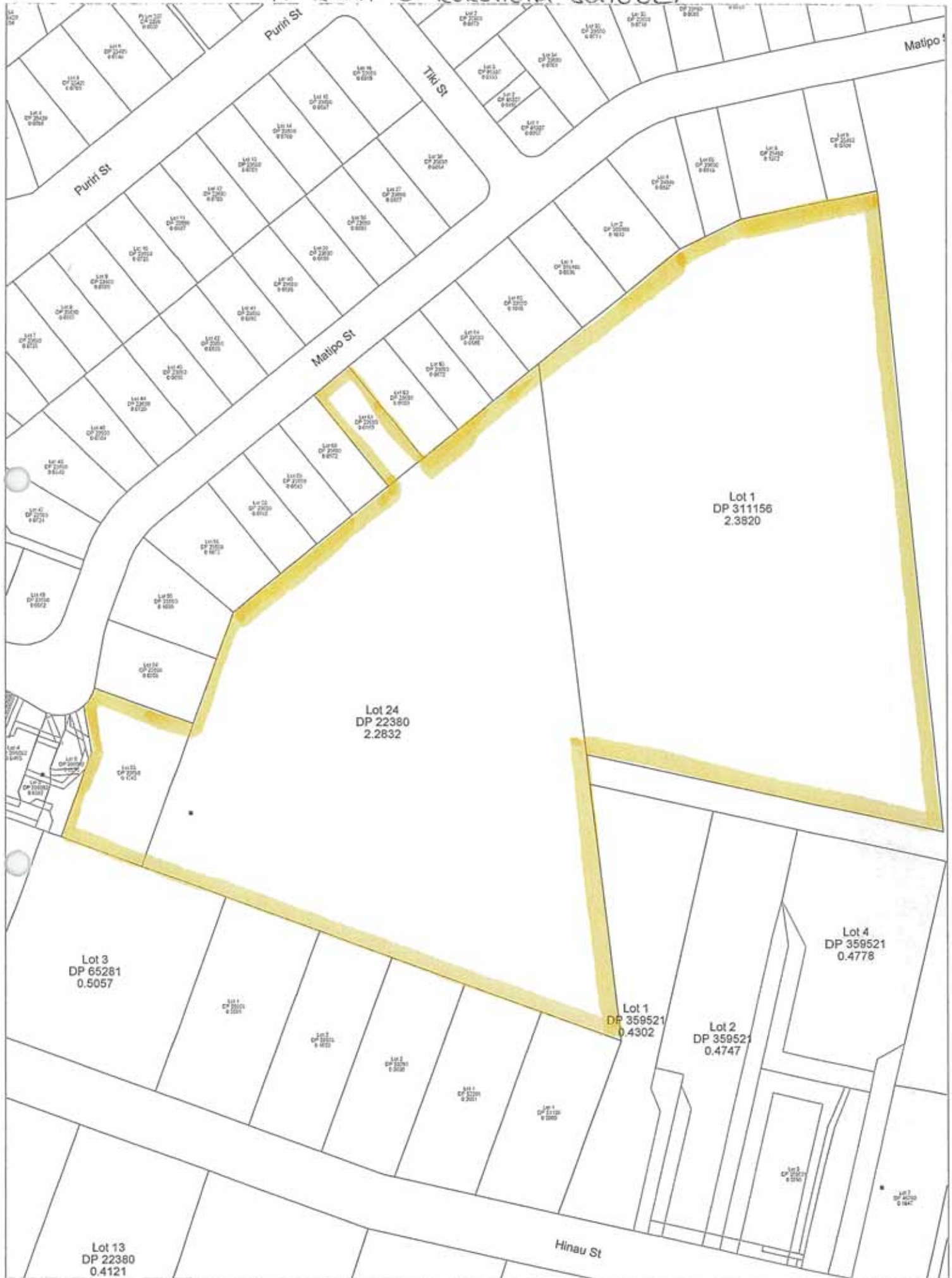
Section 333 Right Bank more...
2.1316



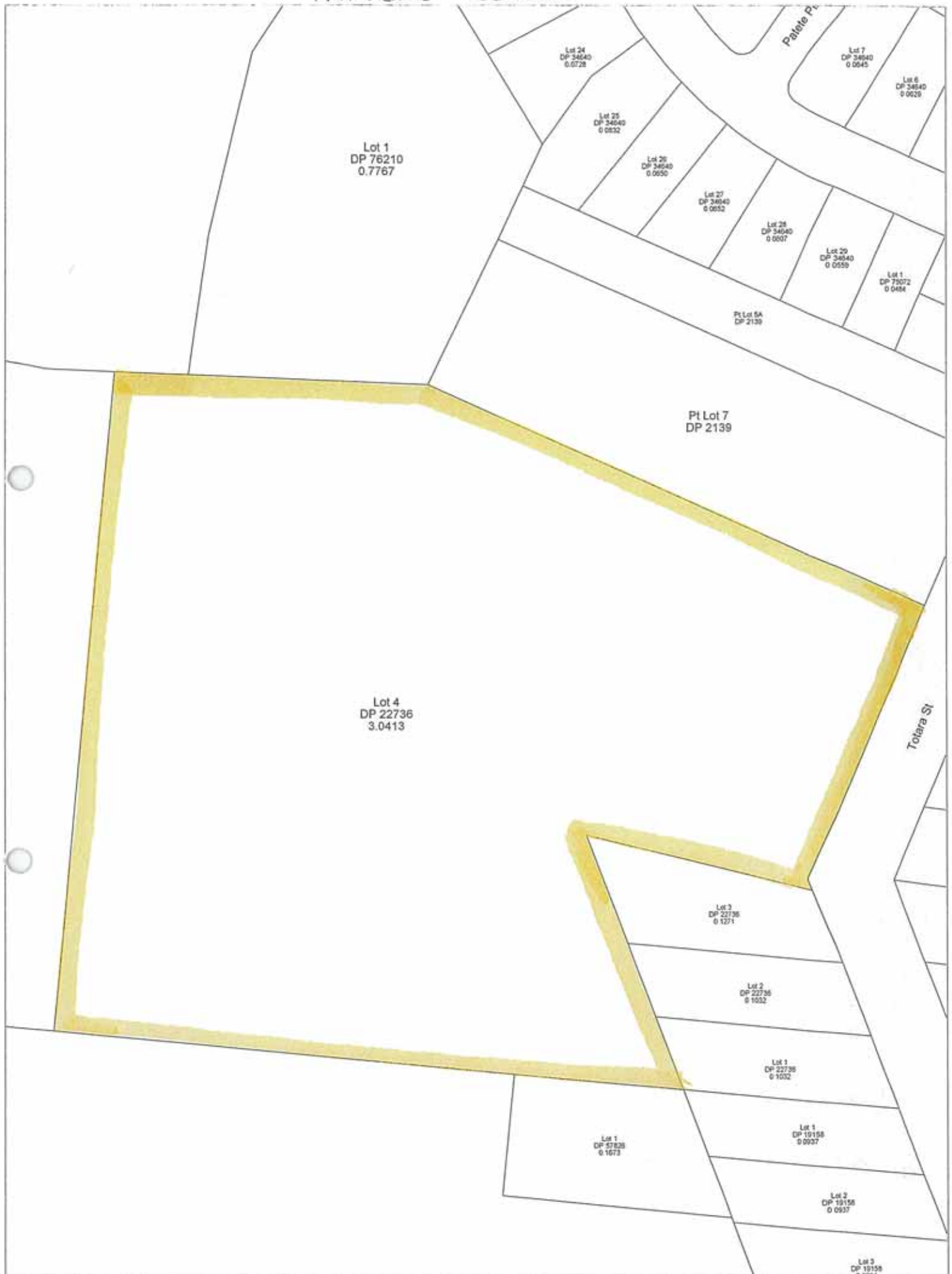
CASTLECLIFF SCHOOL



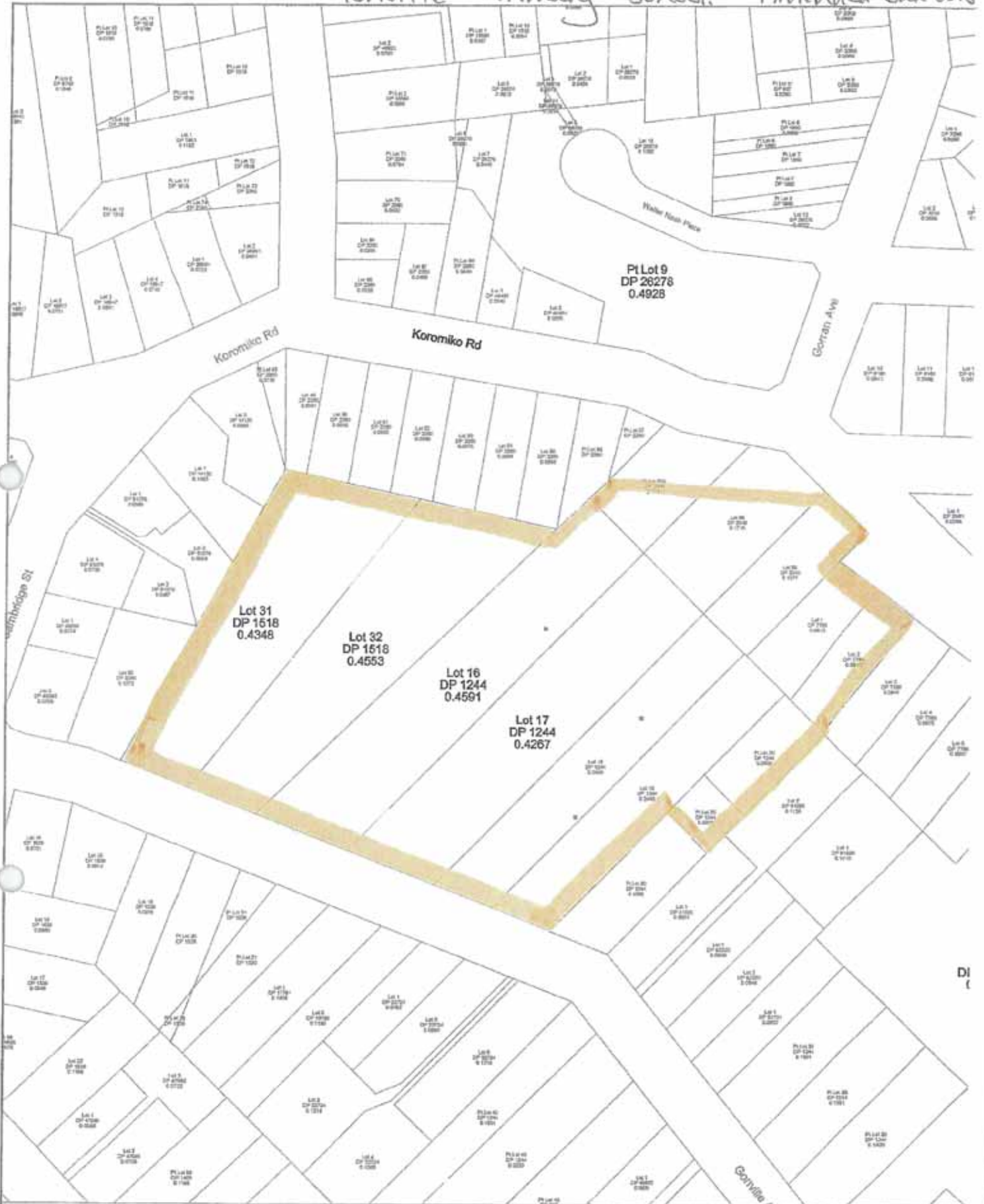
TE KURA O KOKOHUUA SCHOOL



TAWHERO SCHOOL



Gionville Primary School. - Amended Jan 2013

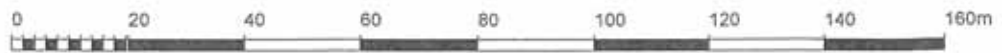
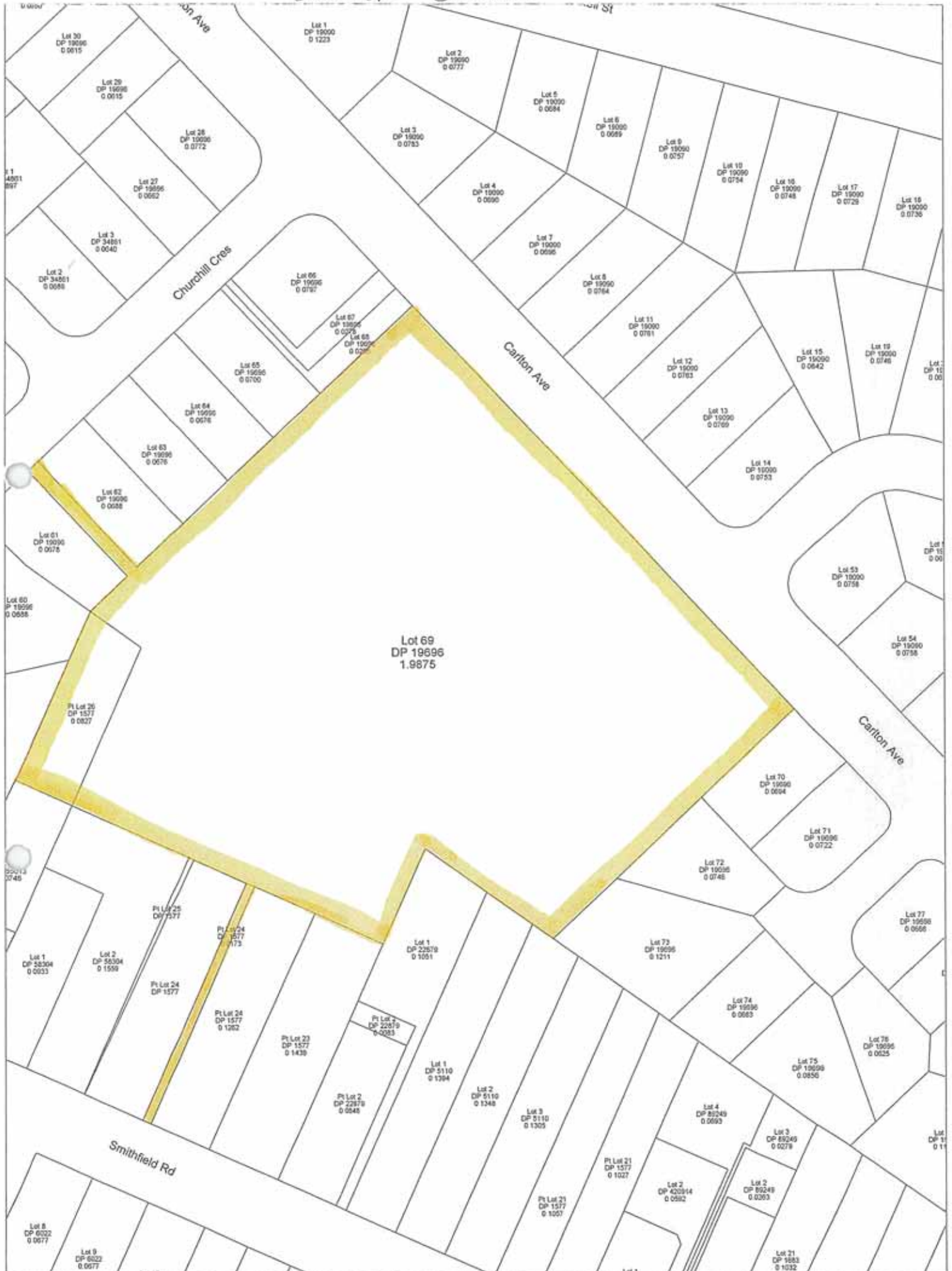


QuickMap
Custom Software Ltd



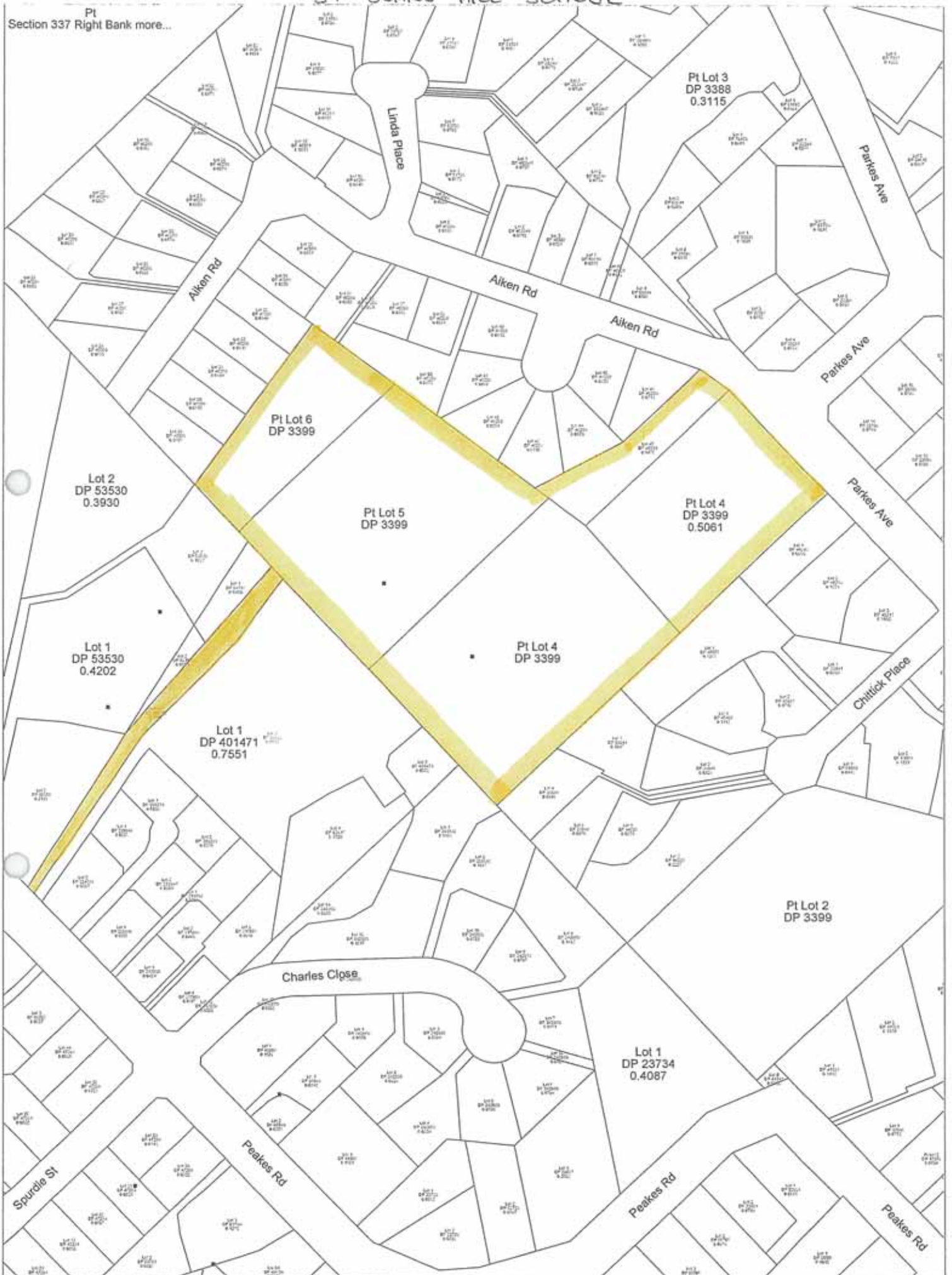
Any person wishing to rely on the information shown on this map must independently verify the information
Scale 1:1700 Topographical and Cadastral map derived from LINZ data. Printed: 18/01/2013 14:24.

CARLTON SCHOOL.



ST JOHNS HILL SCHOOL

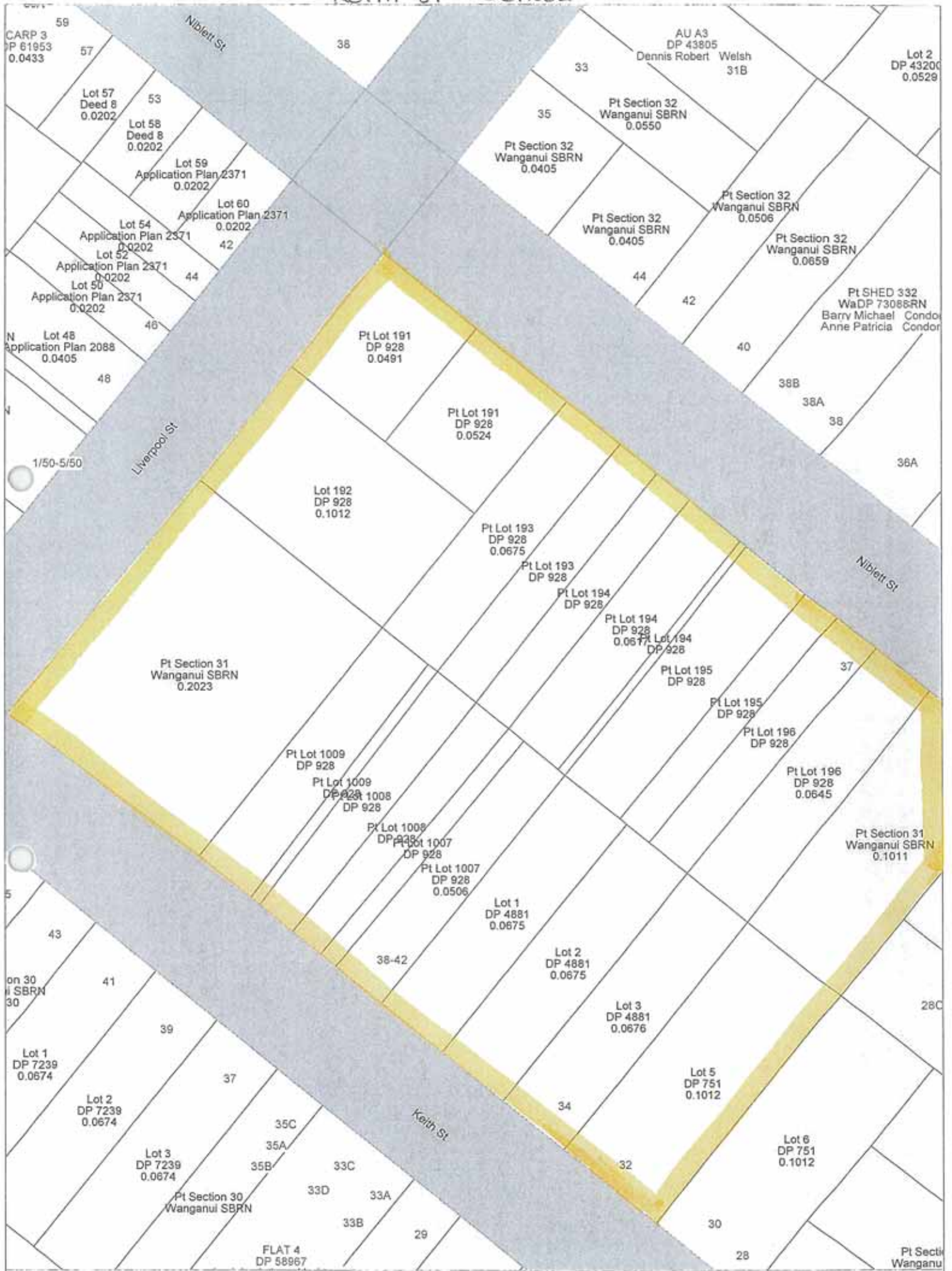
Pt Section 337 Right Bank more...



QuickMap Custom Software Ltd

Any person wishing to rely on the information shown on this map must independently verify the information
Scale 1:2034 Topographical and Cadastral map derived from LINZ data. Printed: 2/08/2012 11:47.

KEITH ST SCHOOL



DURIE HILL SCHOOL



WANGANUI EAST SCHOOL

