

A night sky filled with stars, with silhouettes of trees and plants in the foreground. The sky transitions from a deep blue at the top to a lighter, hazy glow near the horizon. The plants in the foreground are dark against the bright sky.

Working together post-
settlement



- 2018 Resolutions

Council's Resolution

Proposed by Mayor McDouall, seconded by Cr Duncan:

6.1 THAT Council notes that the Whanganui Land Settlement Negotiation Trust is in the process of negotiating its land claim with the Crown.

CARRIED

6.2 THAT Council enters into a Relationship Agreement with a post-settlement governance entity which will be informed by Te Tomokanga ki te Matapihi (Whanganui Land Settlement Values).

CARRIED

6.3 THAT Council considers the transfer of 128 hectares of grazing land on Airport Road and South Spit to Whanganui Land Settlement Negotiation Trust. The land forms part of, and is included in, Identifier 357927, Wellington Registry.

CARRIED

Cr Anderson voted against.

6.4 THAT Council considers the advice of the Office of Treaty Settlements that Whanganui Land Settlement Negotiation Trust request a First Right of Refusal for the purchase of any Harbour or City Endowment land.

CARRIED

Crs Anderson and Bennett voted against.

6.5 THAT Council understands the intention of there being continued unfettered public access and supports the vesting of Pākaitore to a post-settlement governance entity.

CARRIED

6.6 THAT Council understands the intention of there being continued unfettered public access to and supports the progression of vesting of some or all Crown owned reserve land at Kai Iwi Beach.

CARRIED

Cr Anderson voted against.

6.7 THAT Council considers opportunities for joint management relationships with Whanganui Land Settlement Negotiation Trust's post settlement governance entity for particular reserves that may be identified as significant to the beneficiaries of the Trust.

CARRIED

6.8 THAT Council considers setting up co-governance arrangements for identified lakes and reserves with Whanganui Land Settlement Negotiation Trust's post settlement governance entity.

CARRIED

6.9 THAT Council supports the exploration of a tripartite cross sectoral governance model for a social provider entity that includes the Whanganui Land Settlement Negotiation Trust's post-settlement governance entity with Central Government agencies.

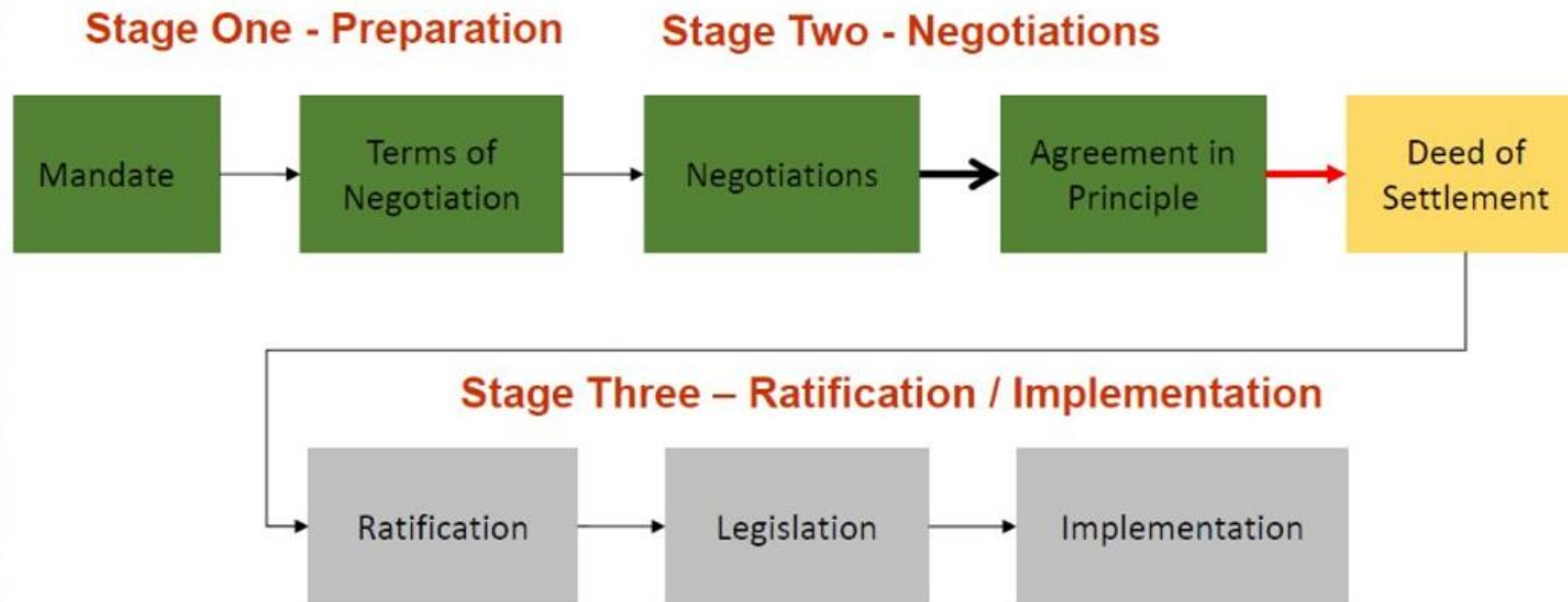
CARRIED

Crs Bennett and Vinsen voted against.

Key elements of a Treaty settlement

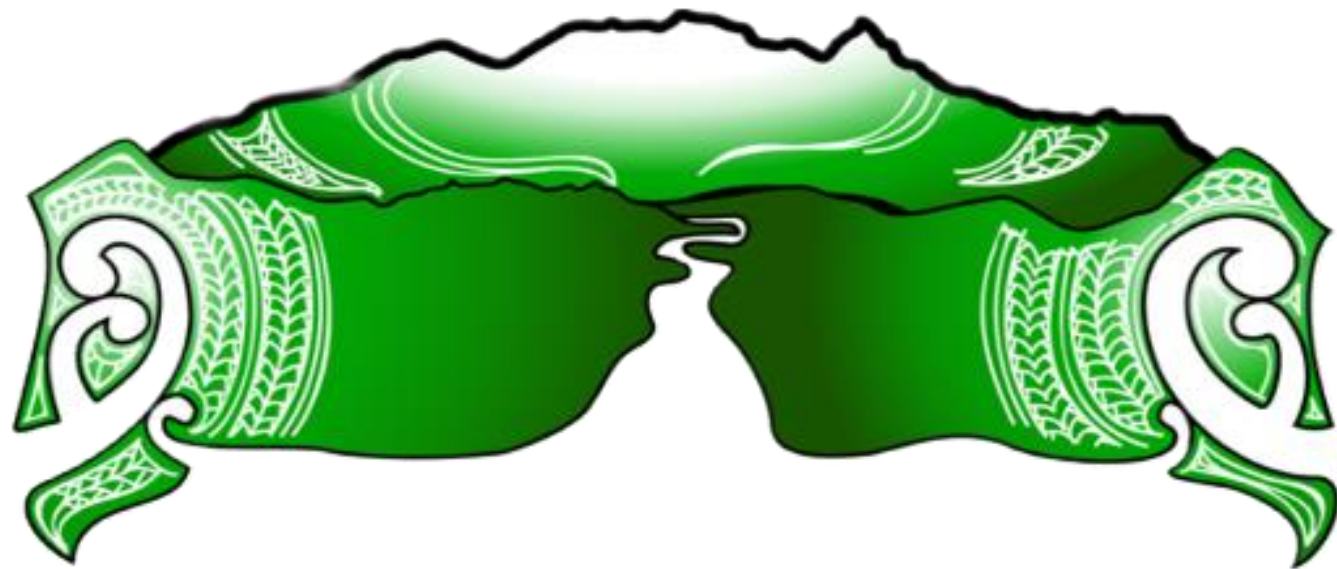
HISTORICAL	CULTURAL	FINANCIAL and COMMERCIAL
<ul style="list-style-type: none">• Crown acknowledgements and apology• Agreed historical account	<p>Includes:</p> <ul style="list-style-type: none">• relationship redress• transfer of Crown sites• statutory recognition• Protocols• place names• deeds of recognition and more	<p>Includes:</p> <ul style="list-style-type: none">▪ money▪ Crown properties▪ future purchase rights.

The Negotiations Process





Te Tomokanga ki Te Matapihi
Relationship Agreement



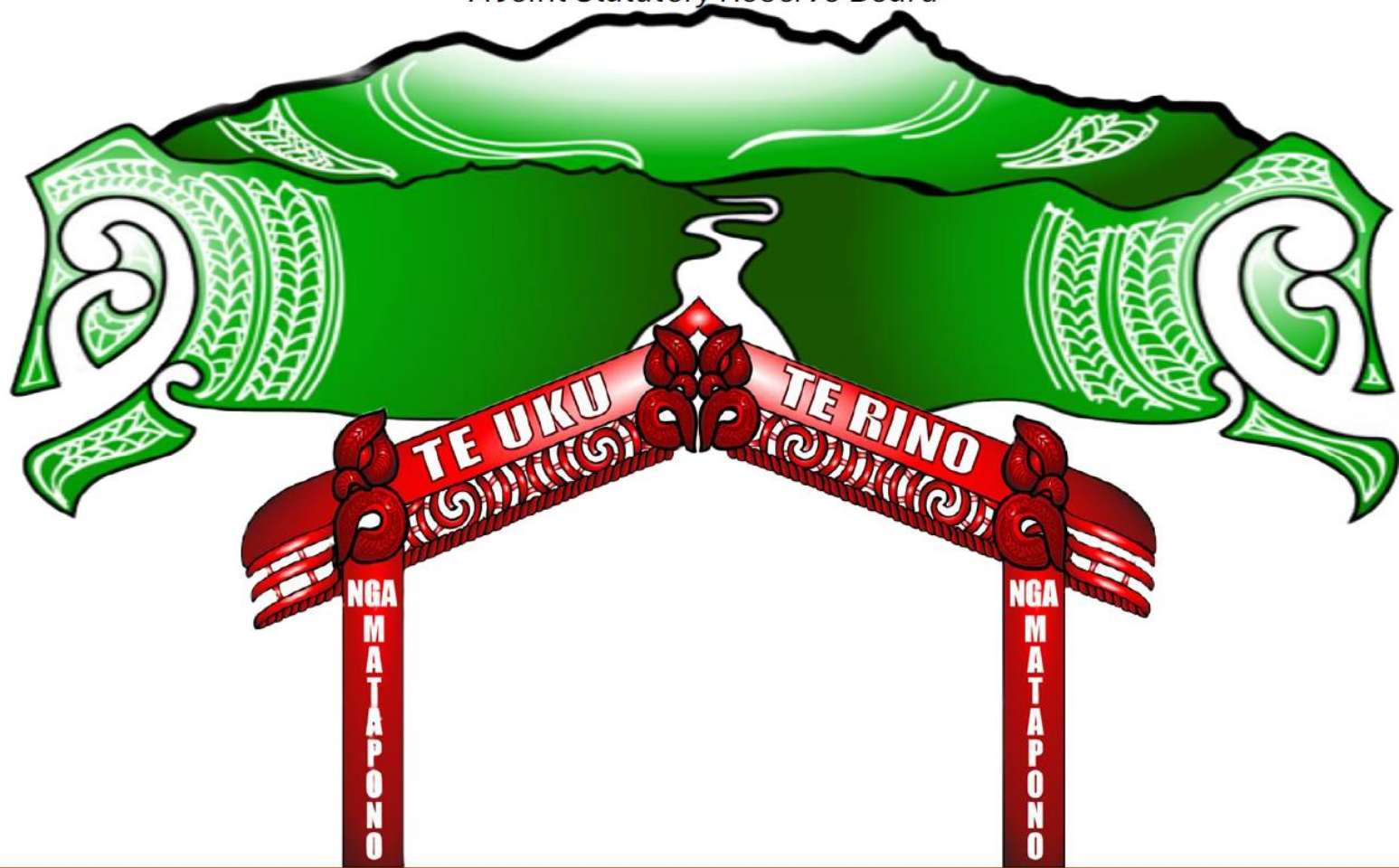
Toitū Te Kupu

Toitū Te Mana

Toitū Te Whenua

NGĀ TŪTEI A MARU

A Joint Statutory Reserve Board



Toitū Te Kupu

-

Toitū Te Mana

-

Toitū Te Whenua



NGĀ TŪTEI A MARU

The Guardians of Maru's domain

Subject to finalisation of
the settlement.

The health and well-being of the land and lakes is paramount for Whanganui Iwi and Hapū, and the communities of the Whanganui District.

The Ngā Tūtei a Maru Board reflects a new era and relationship between Whanganui Iwi and Whanganui District Council, which sees Te Tomokanga ki Te Matapihi as the basis of the relationship.

PURPOSE: To uphold and promote the health and well-being of the land and lakes by administering the Whanganui Reserves in accordance with the clarification and purpose of each of the reserves.

FUNCTIONS: Give life to Te Tomokanga ki Te Matapihi in all of its decision-making;
Be the administering body of each Reserve:

- for the purpose of each reserve classification
- for the purpose of protecting and enhancing its cultural, spiritual and ecological values

Toitū Te Kupu

-

Toitū Te Mana

-

Toitū Te Whenua

Subject to finalisation of
the settlement.

NGĀ TŪTEI A MARU

*The Guardians of
Maru's domain*

Establishment Fund: Iwi contribution of \$0.5M

Makeup: 6 members, serving a 4-year term

- x3 IWI MEMBERS:
 - WLS PSGE Chair
 - 2 Iwi/Hapū appointed members
- x3 COUNCIL MEMBERS:
 - Whanganui Mayor
 - 2 Council-appointed members



Toitū Te Kupu

-

Toitū Te Mana

-

Toitū Te Whenua



NGĀ TŪTEI A MARU

*The Guardians of
Maru's domain*

Subject to finalisation of
the settlement.

**There will be no change to public access to
these reserves under the management of
Ngā Tūtei a Maru.**

- Pukenamu (Queens Park)
- Part Tāwhero/Gonville Domain
- Kai Iwi Beach/Mōwhānau Reserve (Nukumaru Domain)
- Pākaitore (Moutoa Gardens)

Toitū Te Kupu

-

Toitū Te Mana

-

Toitū Te Whenua

Pukenamu Queen's Park



Tāwhero Gonville Domain



■

Nukumaru Domain (Mōwhānau)



Pākaitore Moutoa Historic Reserve



TE TOMOKANGA TOITŪ TE WHĀNAU

A Bold Vision for Whanganui's Future



Toitū Te Kupu

-

Toitū Te Mana

-

Toitū Te Whenua

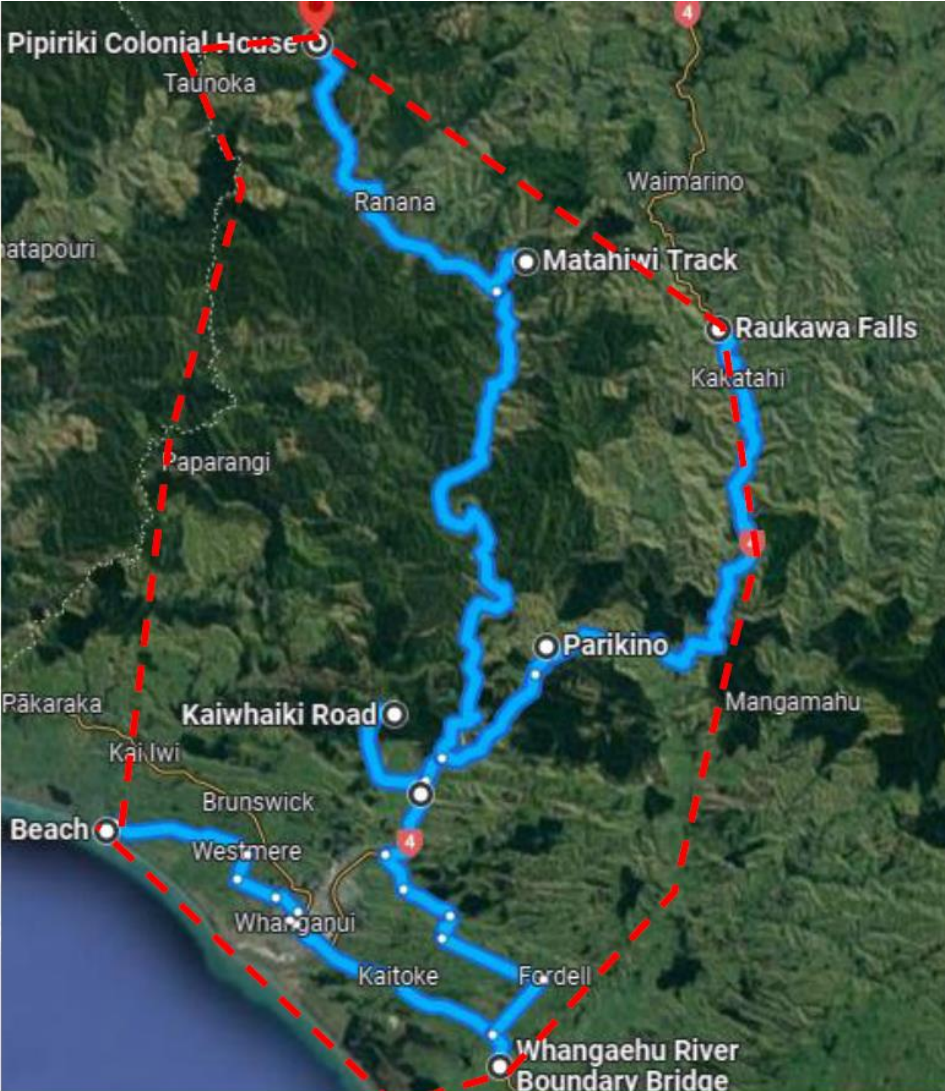


TOITŪ TE WHĀNAU

Proposed Rohe

This map depicts the **proposed** area where the Toitū te Whānau framework applies.

The area identified on this map does not represent an exclusive claim area or area of exclusive interest and includes areas in which other iwi/hapū have interests.



Toitū Te Kupu - Toitū Te Mana - Toitū Te Whenua

TOITŪ TE WHĀNAU

He ao āpōpō, he ao tea

Our legacy, our aspiration, our future



VISION

We will strengthen all whānau by placing them at the heart of our well-being decision-making to meet our genuine local needs.

MISSION

Uniting to improve the well-being of our whānau and community.

PURPOSE

To reposition and redesign our well-being landscape by providing a platform for strategic governance to **mahi ngātahi** to provide the best possible position to improve the well-being of our Whānau, Hapū, Iwi and Hāpori within our Te Whare Kāho o Whanganui.

KEY STRATEGY

To use a values-based approach to establish meaningful relationships.

Toitū te Whānau reflects true partnership where our worldviews and practices are combined to guide strategic direction in a way that is responsive to the needs of whānau.

Toitū Te Kupu

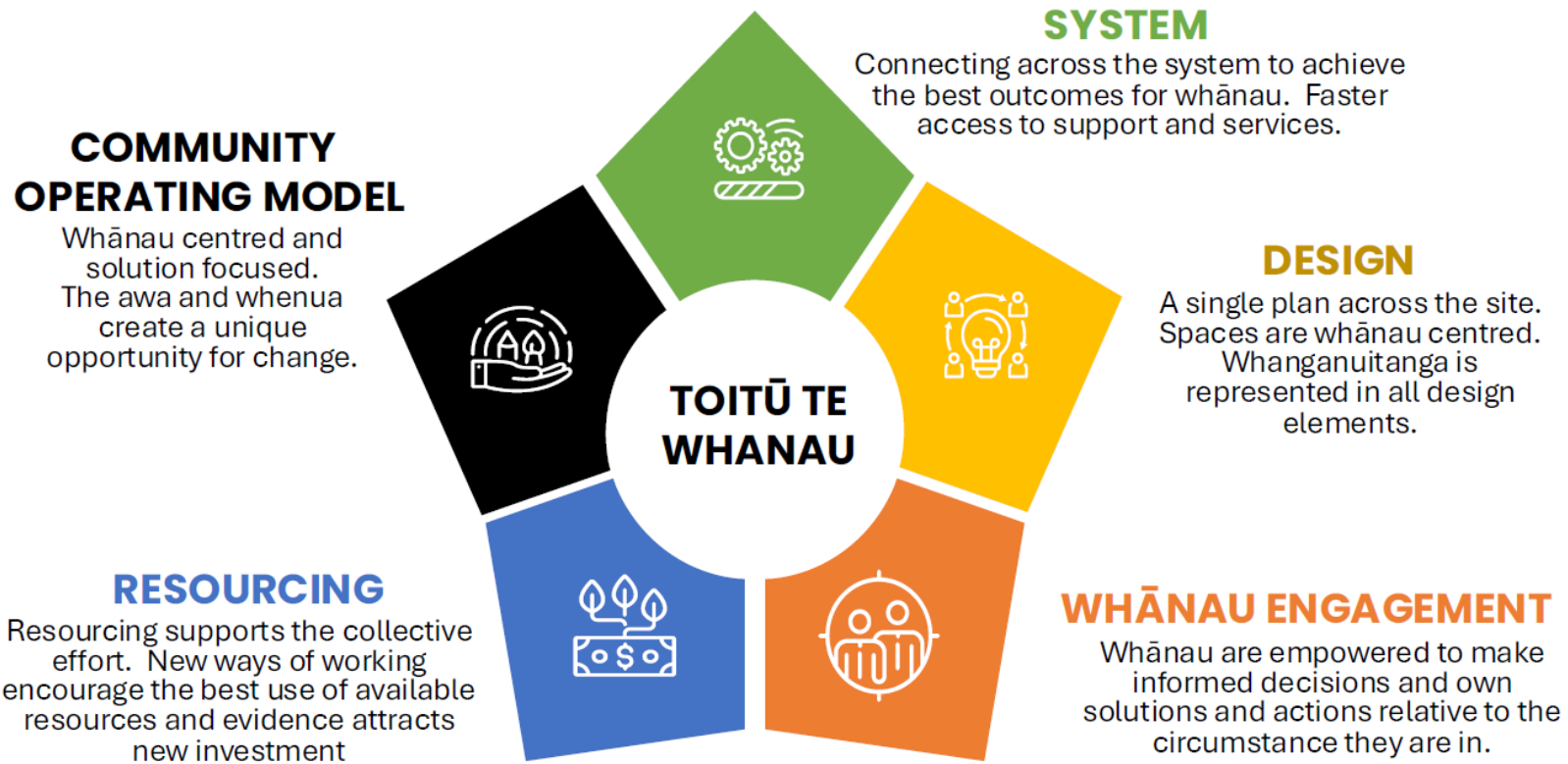
-

Toitū Te Mana

-

Toitū Te Whenua

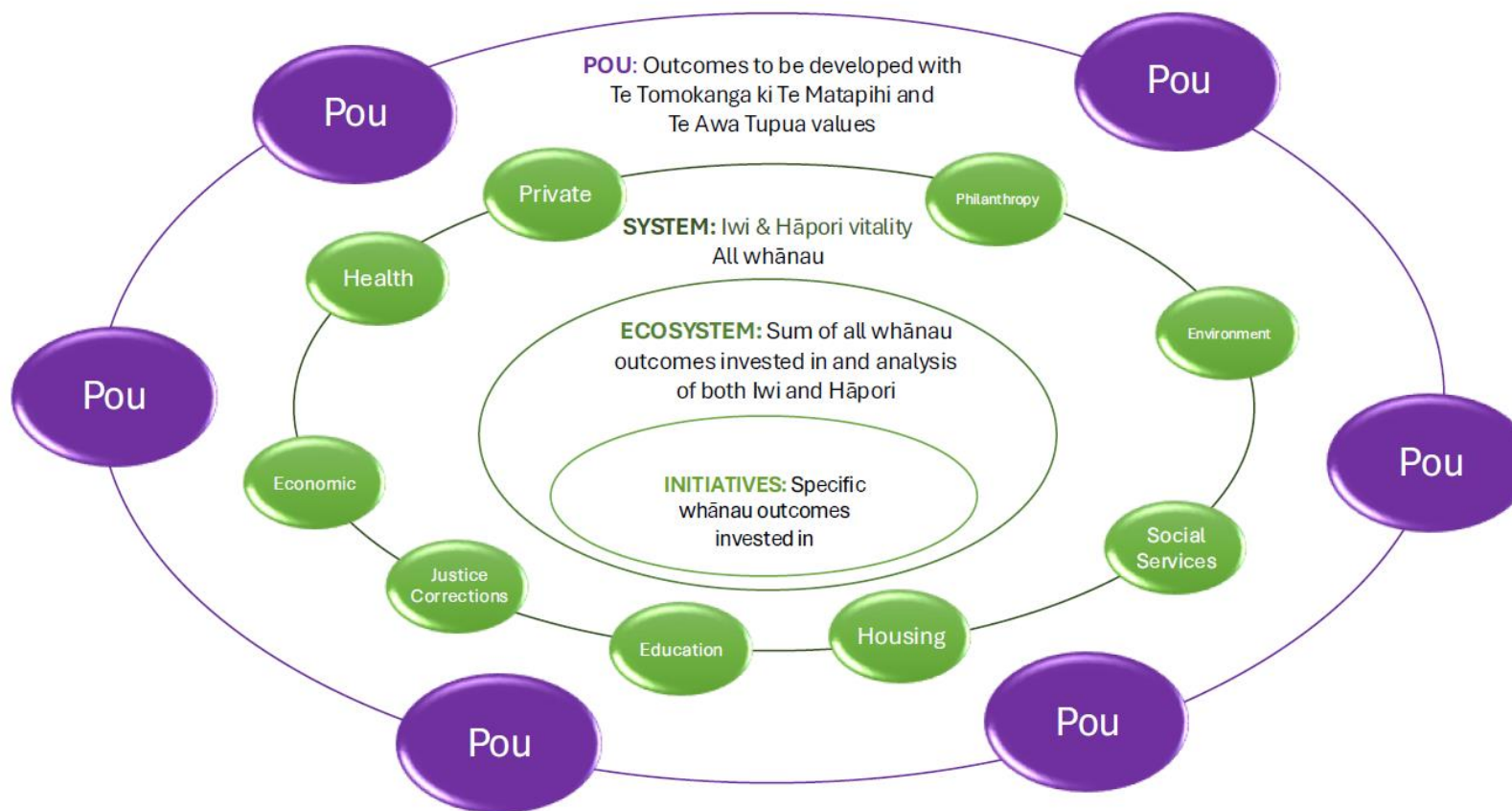
THE APPROACH has five elements: System, Design, Whānau Engagement, Resourcing, and a Community Operating Model. Collectively, these elements aim to create change and improve outcomes for whānau. Each element requiring something new and different from the status quo.



Toitū Te Kupu - Toitū Te Mana - Toitū Te Whenua

TOITŪ TE WHĀNAU

Future interwoven work of Toitū te Whānau with government and other agencies connection



Toitū Te Kupu

-

Toitū Te Mana

-

Toitū Te Whenua

Toitū te Whānau Outcomes



Toitū Te Kupu

-

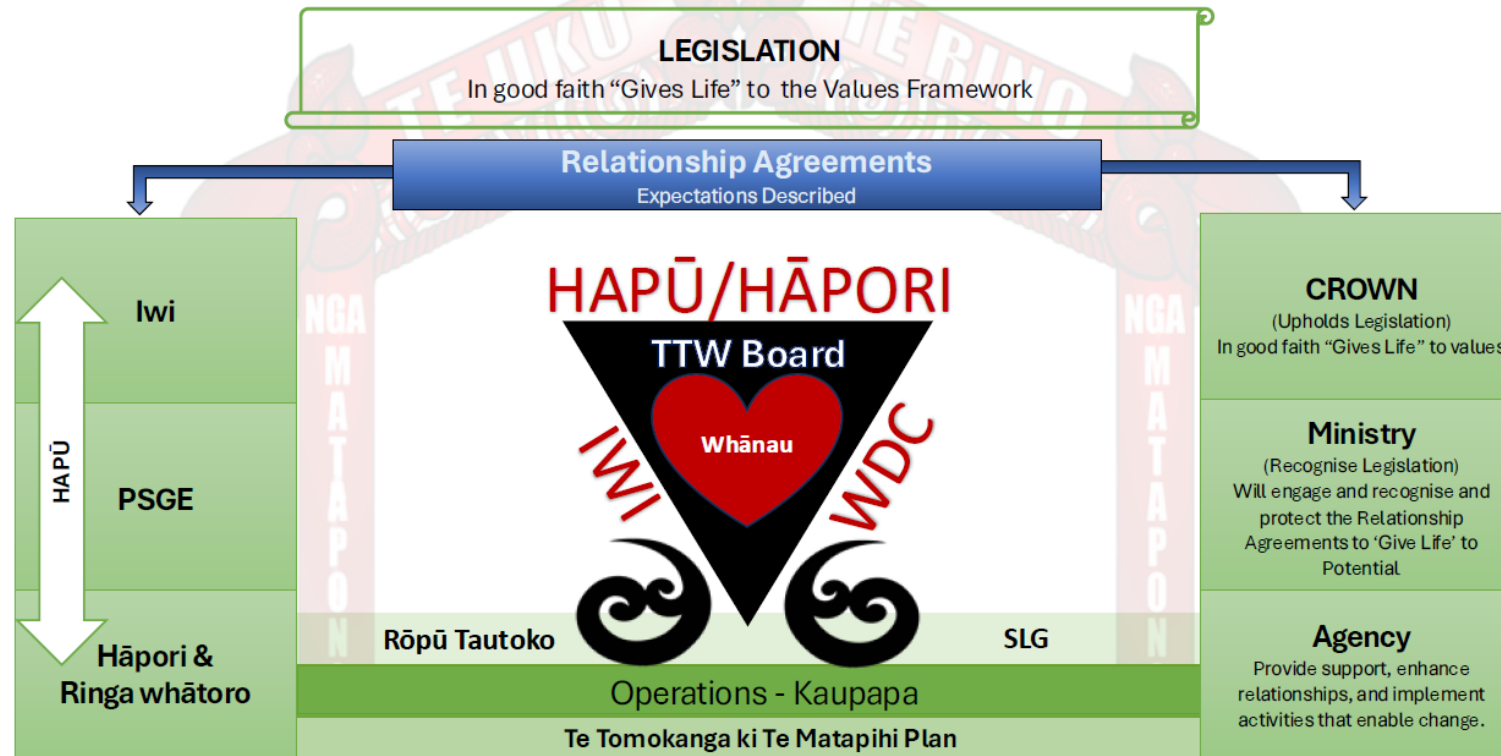
Toitū Te Mana

-

Toitū Te Whenua

TOITŪ TE WHĀNAU FRAMEWORK

Toitū te Kupu, Toitū te Mana, Toitū te Whenua



Toitū Te Kupu

-

Toitū Te Mana

-

Toitū Te Whenua