

Community Link

Whanganui District Council
101 Guyton Street
PO Box 637, Whanganui 4500
06 349 0001
yourcouncil@whanganui.govt.nz
www.whanganui.govt.nz
@whanganuidistrictcouncil
@whanganuidc
@WhanganuiDC

Roadway platform will raise safety

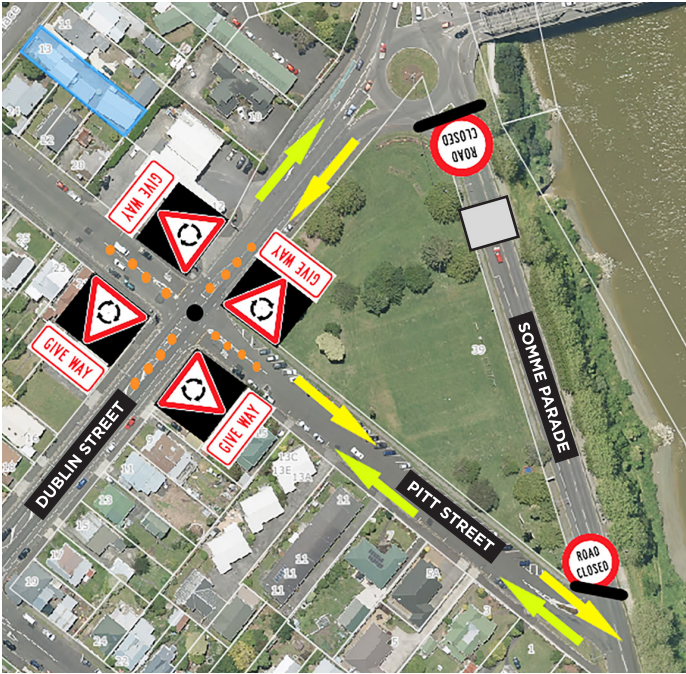
Crossing Somme Parade at Cornmarket Reserve is set to become safer for pedestrians and shared pathway users with the addition of a raised platform.

The section of Somme Parade between Pitt Street and Dublin Street is scheduled to be closed from **Monday, 18 November until Friday, 6 December 2019** while the raised platform is built.

Whanganui District Council's Senior Road Engineering, Brent Holmes, says the raised platform, which is part of the Whanganui Urban Transportation Strategy, will provide a safer and more visible crossing point for those using the shared pathway along the riverfront.

While the raised platform is being installed vehicles will be unable to enter or exit the closed part of Somme Parade. Instead, they will be detoured into either Pitt Street or Dublin Street, depending on their direction of travel.

Contractors will use stop-go signs to direct traffic during peak hours (Monday to Friday, between 3.00pm to 6.00pm) for the duration of the work.



New bus card to Bee used

A regional integrated ticketing system is being rolled out in the Horizons region with Whanganui buses the first to get the new tag-on, tag-off system. The new Bee Card will replace Horizons' existing GoCard and the switch will take place on **Monday, 9 December 2019**.

Horizons Regional Council Transport Manager, Phil Hindrup, says, "Bee Cards will be free for a limited time with a minimum \$5 top-up. We're encouraging passengers to get their new Bee Card in time for the switch either on board the bus, at Whanganui i-SITE, 31 Taupō Quay, or Horizons' Whanganui office at 181 Guyton Street."

Bee Cards can also be ordered from: www.beecard.co.nz

Call for Red Cross helpers

Red Cross is calling for "actors" to be part of a training exercise at Kai Iwi Beach on **Saturday, 30 November 2019**.

About 80 Red Cross volunteers from the North Island will be involved in Exercise Mowhanau from Friday, 29 November until Sunday, 1 December 2019 throughout Kai Iwi, Maxwell, Waitotara and Whanganui. Activities will include setting up a Civil Defence welfare centre and ground-based rescue.

The volunteer "actors" are needed from about 7.45am until 12 noon on Saturday, 30 November. If you'd like to be involved, contact Red Cross Whanganui Disaster Welfare and Support Team leader, Tori Bisset, on 027 514 2385.

All welcome at Whanganui & Partners public forum

Whanganui District Council's economic development agency, Whanganui & Partners, is holding its final public forum for the year at the Whanganui War Memorial Centre's Concert Chamber on **Tuesday, 3 December 2019 from 5.15pm to 7.00pm**.

The forum is an opportunity to hear about the agency's recent activities and achievements from new Whanganui & Partners Board Chair, Pahia Turia, Chief Executive, Mark Ward, and staff. Refreshments will be provided.

To attend, please RSVP by Monday, 2 December to: info@whanganuiandpartners.nz or call (06) 349 3119.



White Ribbon street march

White Ribbon Whanganui is holding its annual White Ribbon street march to end violence against women this **Friday, 22 November 2019**.

The event will start at 12 noon – all participants are asked to assemble before the march at the corner of St Hill Street and Taupō Quay. For more information, please visit: www.facebook.com/WhiteRibbonWhanganui/



Rates reminder

Instalment 2 due date 27 November

A reminder to all ratepayers that the due date for payment of Instalment 2 rates for 2019-20 is **Wednesday, 27 November 2019**.

For people who pay by instalment, Whanganui District Council offers direct debit as a payment method. Frequency of payments can be weekly, fortnightly, monthly, quarterly or yearly.

Please contact the Council's rates department on (06) 349 0001 for further information. To make an online credit card payment go to: www.whanganui.govt.nz

Speed skating event

Kowhai Park ring road closure

The ring road behind the playground at Kowhai Park will be closed for a speed skating event this **Saturday, 23 November 2019 from 7.00am to 3.00pm**. The playground will remain open during this event.

Emergency alert ready?

Emergency Mobile Alert system test

Testing of the Emergency Mobile Alert system is being held this **Sunday, 24 November 2019**. Emergency Mobile Alerts are text messages about emergencies sent by authorised emergency agencies to compatible mobile phones.

In the event of an emergency the alerts target areas affected by significant hazards, and will only be sent when there is a serious threat to life, health or property.

To check if your phone is compatible and to find out which agencies can send Emergency Mobile Alerts, please visit: www.getready.govt.nz

Walkway rat baiting

Christie's Hill operation completed

Whanganui District Council advises that the rat baiting operation on Christie's Hill walkway (Hillside Terrace) carried out over the past few weeks has now ended.

Council meetings

You are welcome at our meetings

Meeting next week		
Youth Committee	4.00pm Monday 25 November	Council Chamber, 101 Guyton Street
Meetings for December 2019		
Whanganui Rural Community Board	3.30pm Wednesday 4 December	Nagaizumi-cho Room, 101 Guyton Street
Council Meeting	1.00pm Tuesday 10 December	Council Chamber, 101 Guyton Street

Agendas are available at: www.whanganui.govt.nz/agendas or view hard copies at 101 Guyton Street or the Davis Library.

Is your phone emergency alert ready?

EMERGENCY MOBILE ALERT NATIONWIDE TEST

Emergency Mobile Alert is designed to keep people safe by sending emergency messages to all capable phones from targeted cell towers. No need to sign up or download an app. The EMA test is on **Sunday, 24 November**. Check if your phone is compatible at: getready.govt.nz