



**WHANGANUI
DISTRICT COUNCIL**
Te Kaunihera a Rohe o Whanganui

REFERENCES MINUTES

**Property and Community Services
Committee Meeting**

3 November 2020

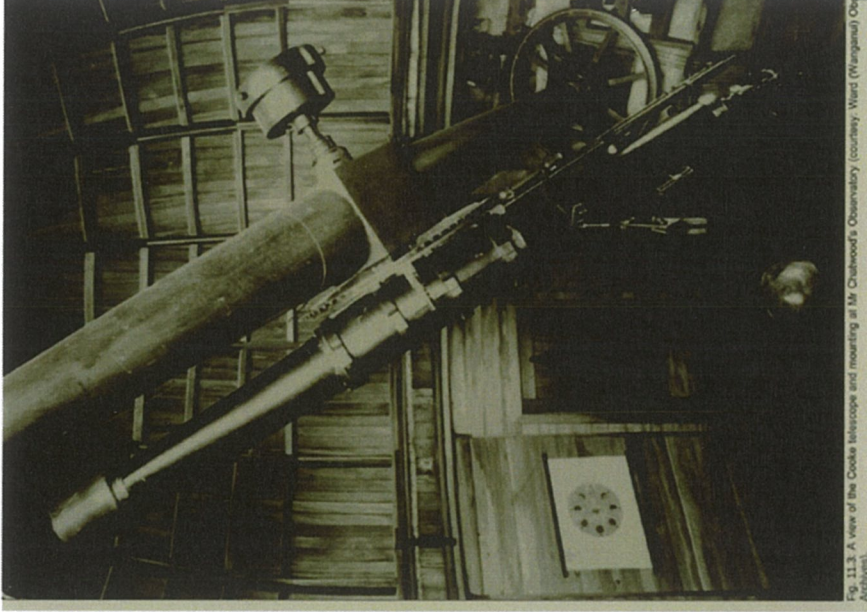
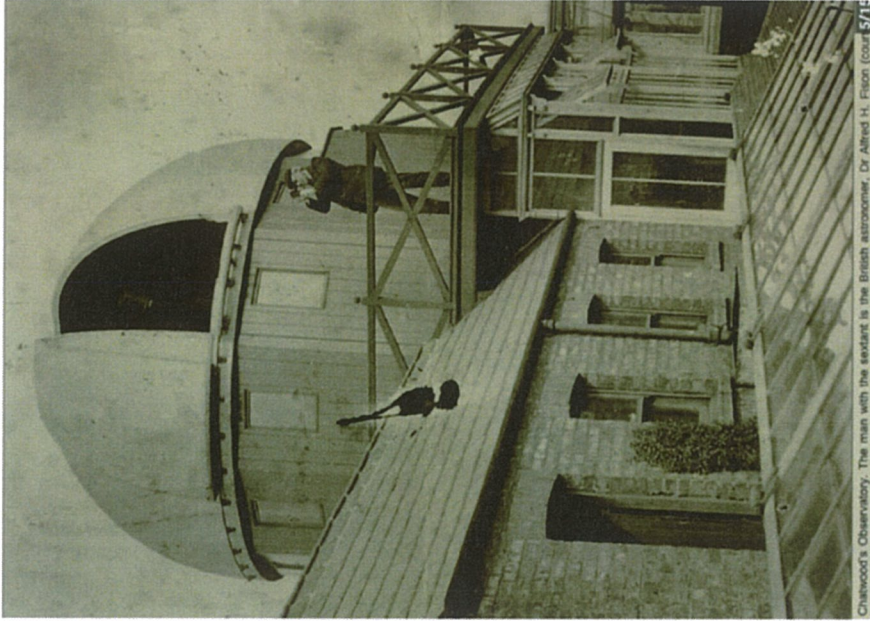
Ward Observatory Cooks Gardens



Heritage and Science Education

Ross Skilton

Wanganui Astronomical Society President



Fletchers Demise:
he is elected to
Parliament in
London, but
commits suicide a
few years later.
Chatwood buys
Cooke, moves it to
Manchester, but a
wooden building is
unsuited to
mounting a
telescope.

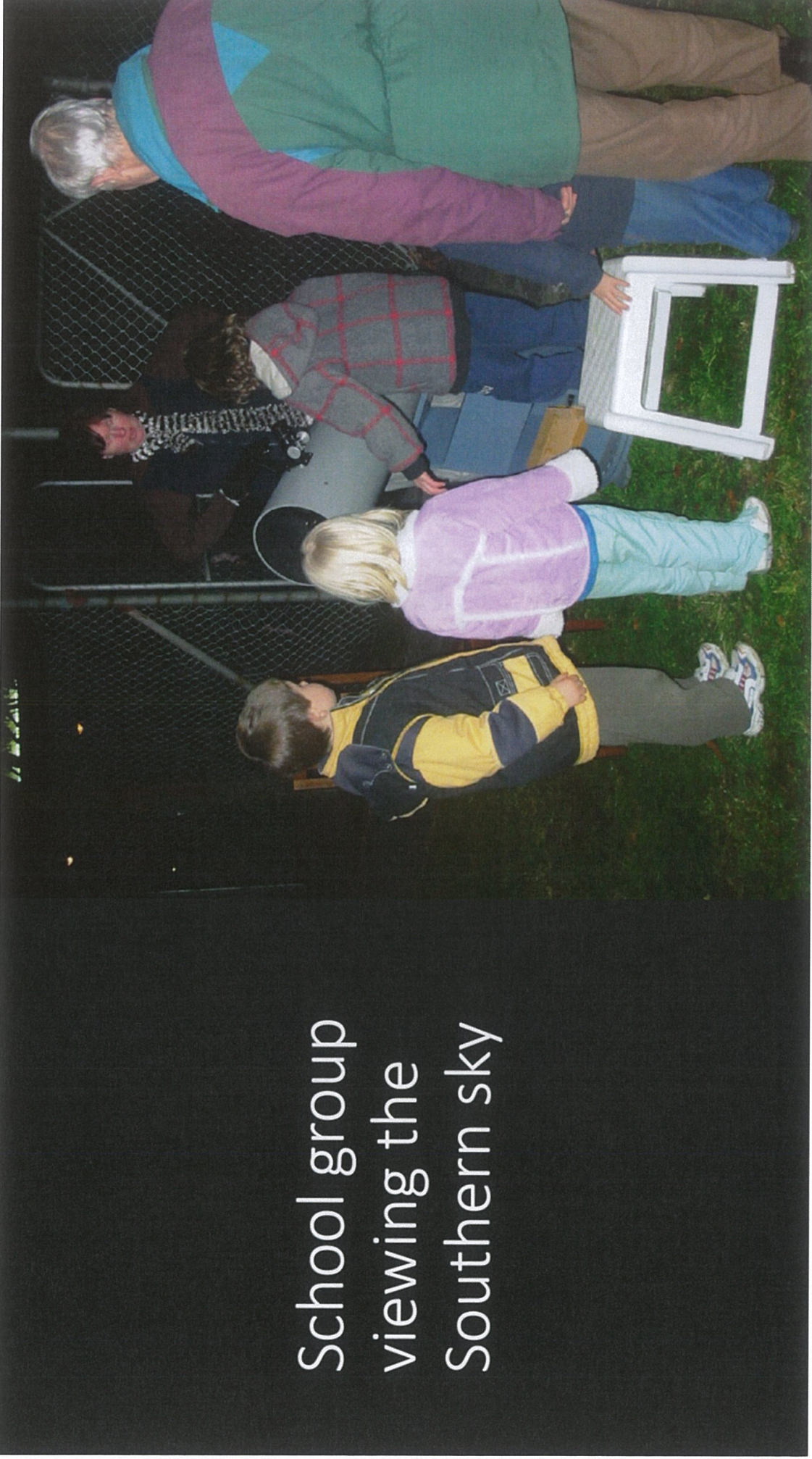


Post-war extensions. Via WRM, ref. 1800.1185

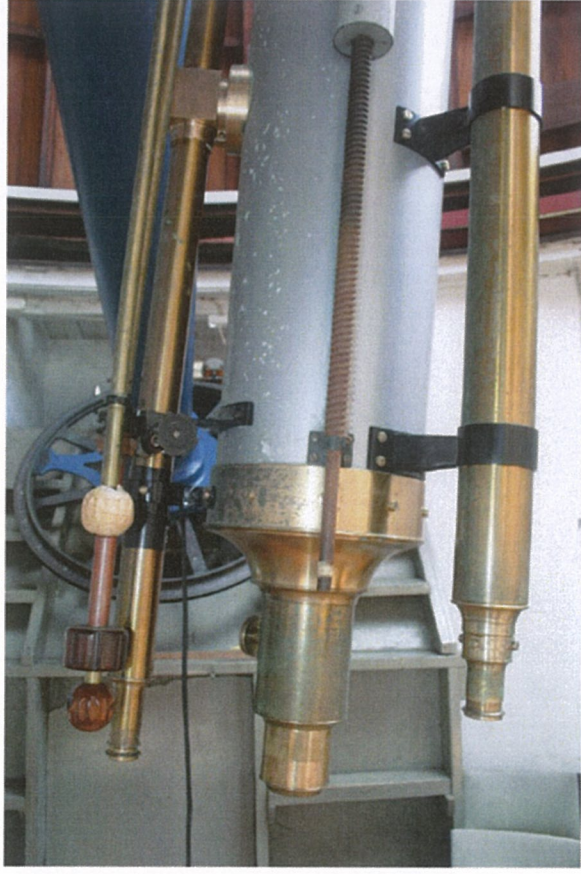
Ward Observatory Dome 2008



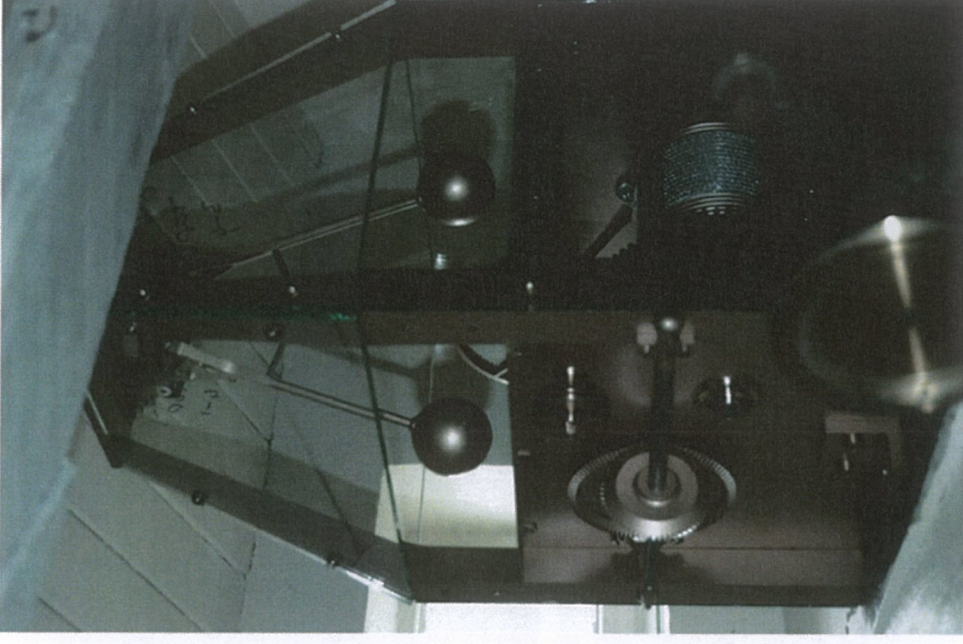
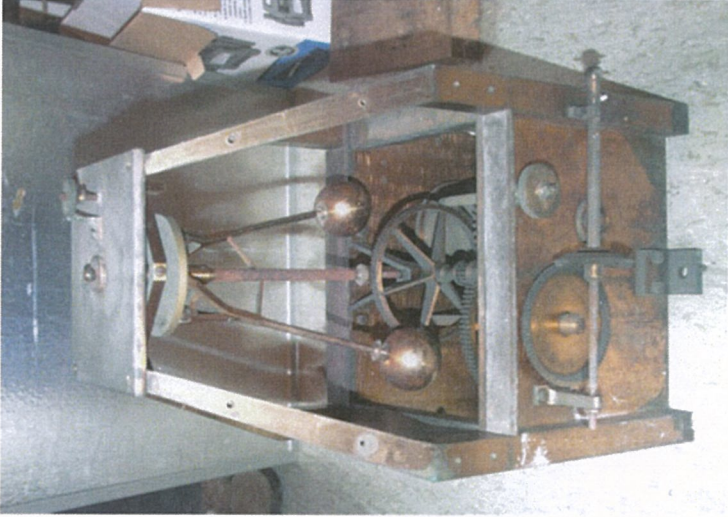
School group viewing the Southern sky



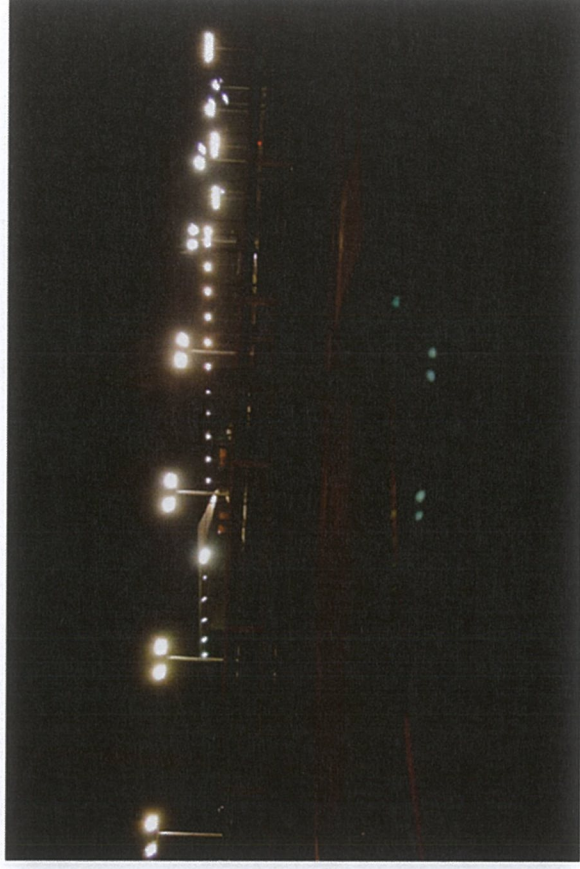
Cooke Refractor 2019 and 2020



Gravity Drive clock refurbished



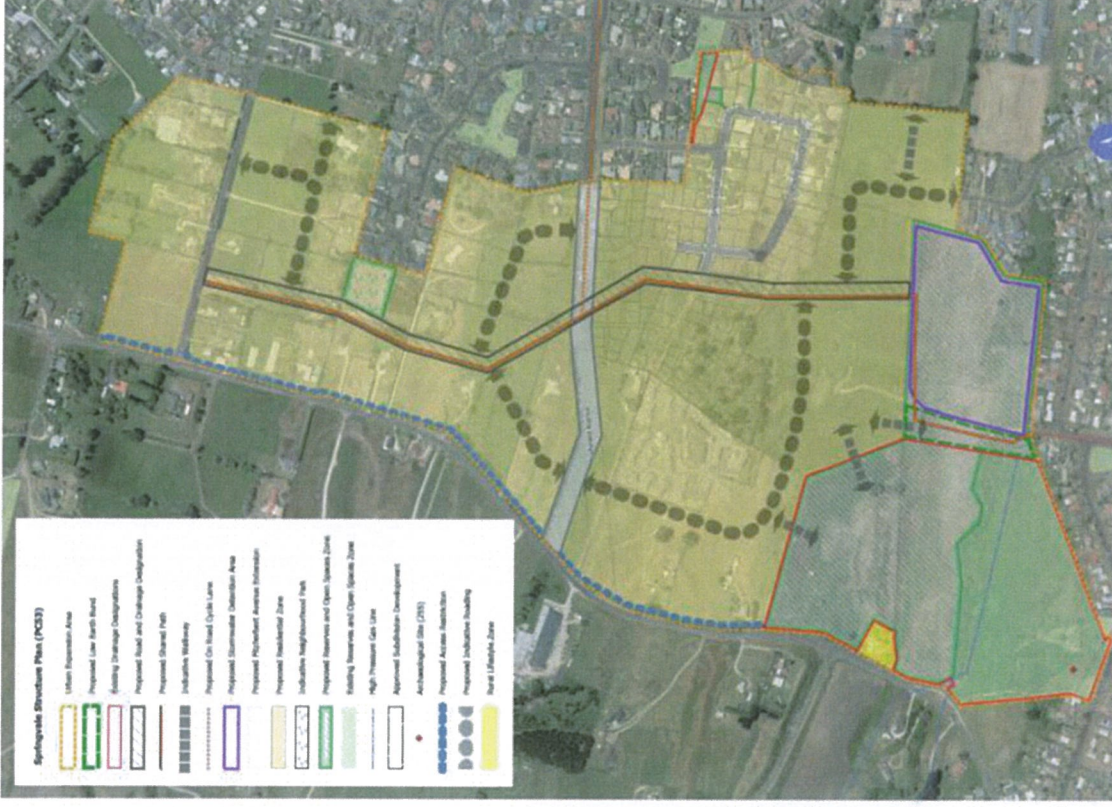
More Glare

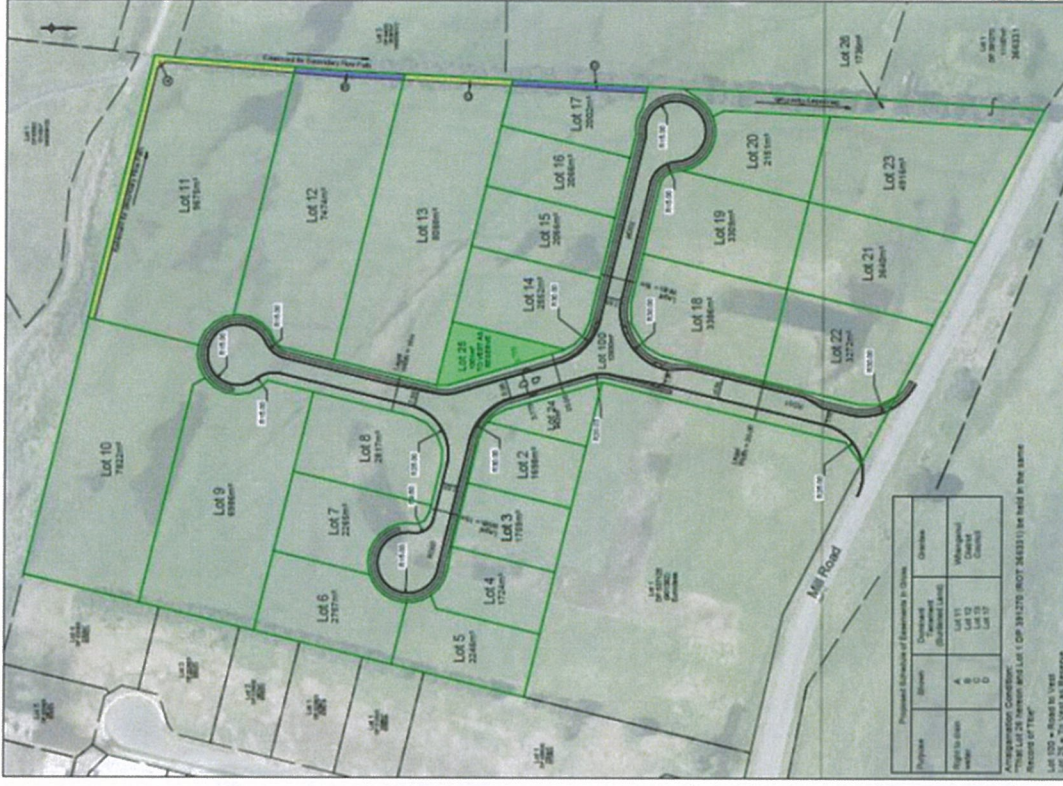
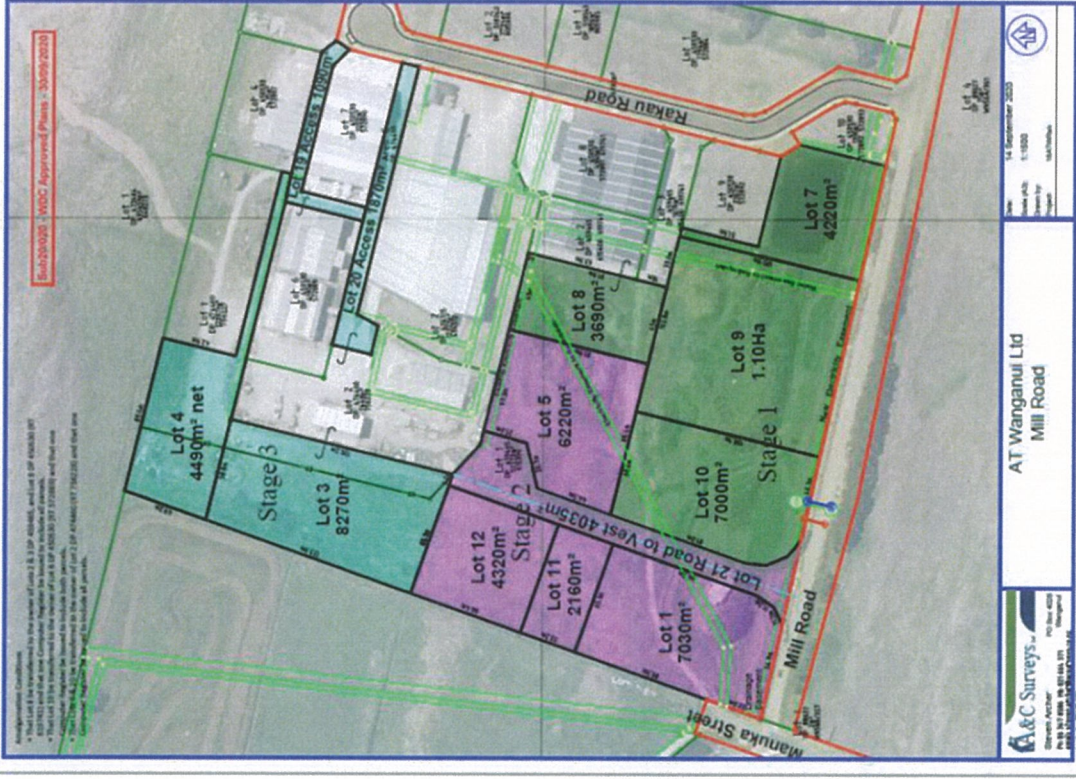


South end Victoria Park



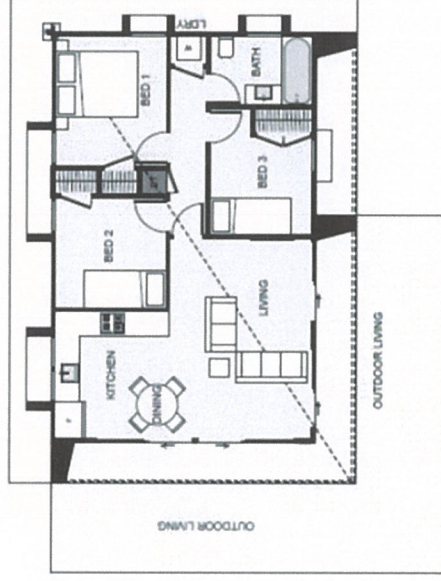








Full height glazing allows the living space in this home to feel bigger than expected. Exterior wing walls allow for privacy and provide great support points for a larger roof overhang while maintaining a contemporary style. Featuring three bedrooms, this minor dwelling offers that little bit extra from a small footprint.



Floor Area: 65m²
0 1 3 1 1 1 1.5m 8.1m

