



## Kia ora koutou

### **Enclosed is your rates assessment for the 2021/22 year.**

On the reverse of this page we have provided a diagram showing how and where the average ratepayer's dollar makes a difference to our district and the services and amenities we share.

More information on the uniform annual general charge and the general rate and the services these cover is available on our website [www.whanganui.govt.nz](http://www.whanganui.govt.nz)

Your rates for the coming year have been set in line with our Long-Term Plan 2021-2031, the ten-year vision we recently confirmed for the Whanganui district.

We received a record 608 community submissions to this plan, after a significant programme of public engagement. I enjoyed meeting many of our residents in person at a series of events held throughout the city and district and appreciated the effort many took with their submissions.

In the end, after careful consideration, we have agreed to a relatively conservative plan, prioritising the wellbeing of our community and environment. Whanganui has done well over the last year, our vibrancy and economic growth has not diminished in spite of the challenges of 2020. However, given the global situation with COVID-19 is far from resolved, we have taken a prudent approach in our decision-making.

Some of the long-term plan activity scheduled to begin during the coming year (2021-22) includes initiating a coastal plan for our district, consulting on spaces and places for young people – and making a start on a three-year implementation of

our housing strategy. In year two we will invest further in these projects and begin work on an extension to the Davis Library.

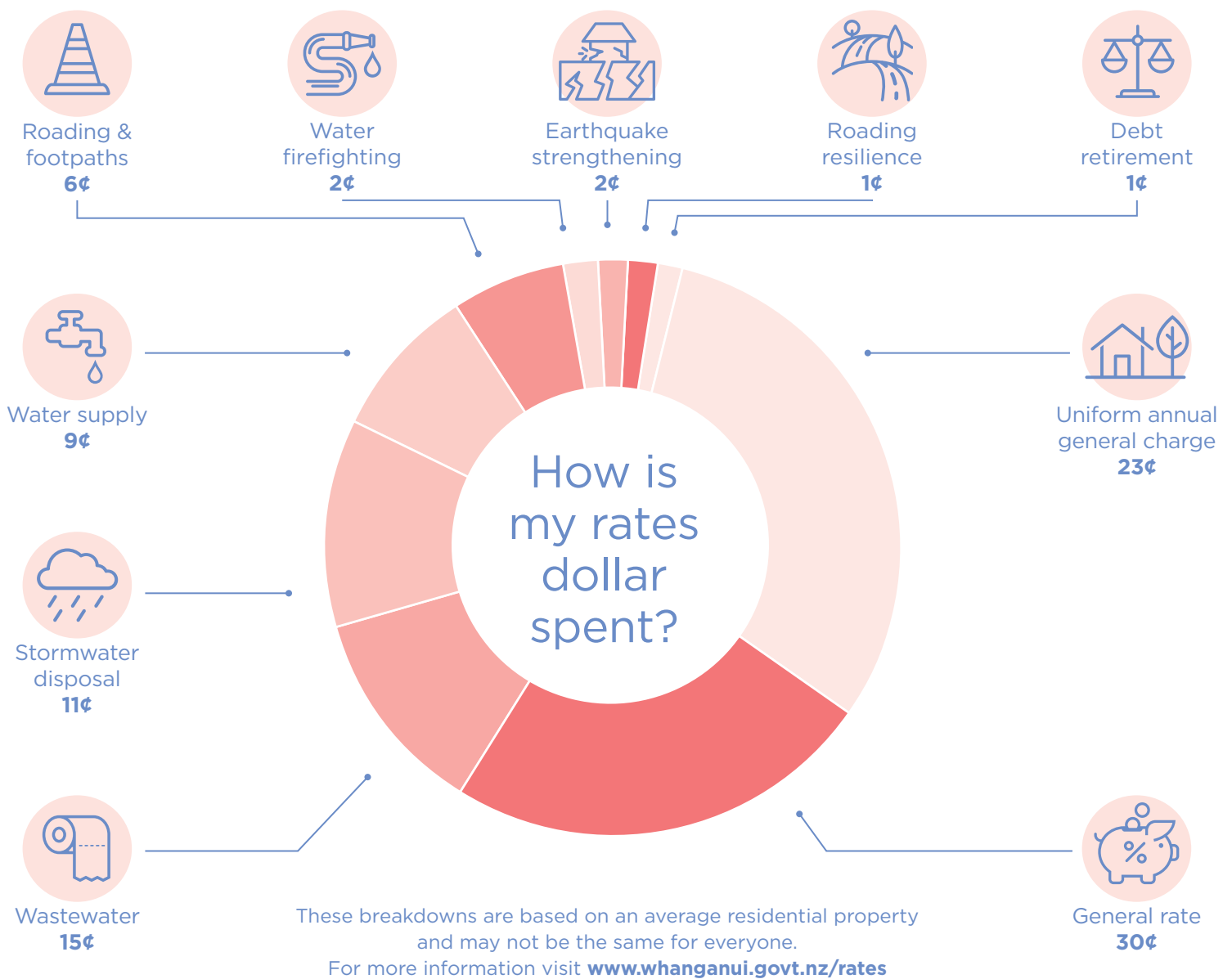
Ongoing work includes the Sarjeant Gallery redevelopment, which is well underway and participation in Te Pūwaha, Whanganui's port redevelopment. Both projects have attracted significant government investment. As well as ensuring the viability and protection of these unique amenities they are intended to stimulate our economy, with the port redevelopment expected to create significant employment in Whanganui.

At our July meeting, where we adopted our new rates for the 2021/22 year, it was confirmed that significant building activity in Whanganui over the past year has added an additional \$90 million to the district valuation - mainly achieved through property subdivisions and new house builds. This energy in the building sector is a telling measure of growth. It also bodes well for existing ratepayers: the average rates increase of 5.7%, outlined in the long-term plan, has been reduced to an average increase of 5.3%.

This is one of the lowest rates rises in the country at this time. Many councils are looking at double-figure rises this year because they have outstanding infrastructure costs, but Whanganui is more fortunate than most.

Ngā mihi nui

Mayor Hamish McDouall



## Rates Rebate Scheme 2021/22

The Rates Rebate Scheme provides a rebate of up to \$665 for ratepayers\* on a low-income who were paying rates for the home in which they were living on 1 July 2021.

### How is my rebate worked out?

Your rebate will be calculated based on your income, rates and the number of dependants living with you.

The income eligibility for a rebate is \$26,510. However, if your income exceeds this amount you could still be entitled to a rebate depending on the total costs of your rates and the number of dependants.

### How do I apply?

Application forms are available from the Council or can be downloaded from [www.govt.nz/rates-rebate-scheme](http://www.govt.nz/rates-rebate-scheme)

You can apply in person to Whanganui District Council, 101 Guyton Street during normal office hours (8.30am to 5.00pm, Monday to Friday).

### Check your eligibility



Visit [www.whanganui.govt.nz/rates-rebate-scheme](http://www.whanganui.govt.nz/rates-rebate-scheme) for a handy calculator to see if you are eligible.

### What information do I need to provide?

1. Accurate information about your income (and that of any spouse/partner and/or joint home owner who lives with you) for the tax year ended 31 March 2021.
2. Your Horizons Regional Council rates bill.

**Applications close on  
Wednesday, 30 June 2022.**

\*ratepayer means any person whose name is recorded in Whanganui District Council's rating information database (RID).